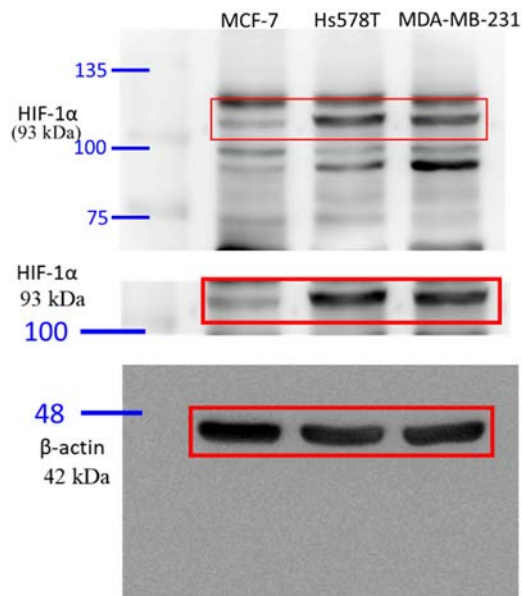
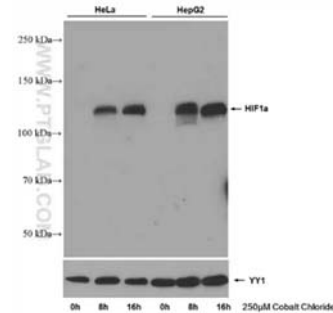


Western blots of Figure 1B

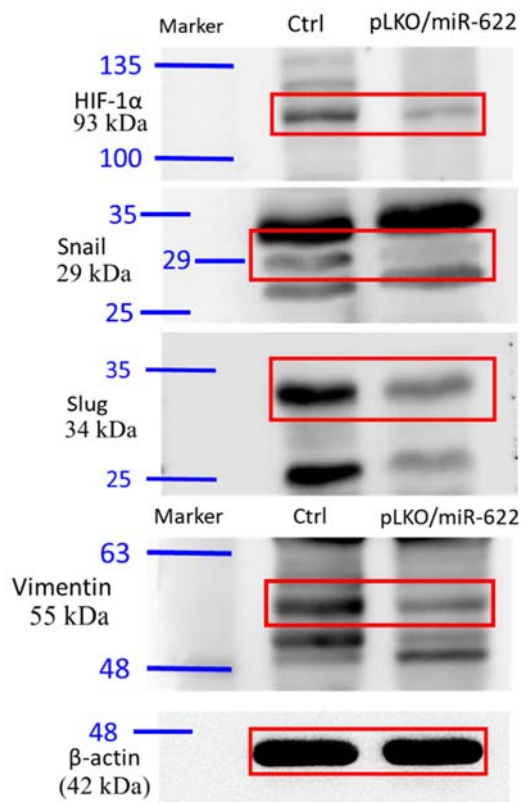


Blots probed with anti-HIF-1α
(Proteintech, no. 66730-1-Ig; 93 kDa)



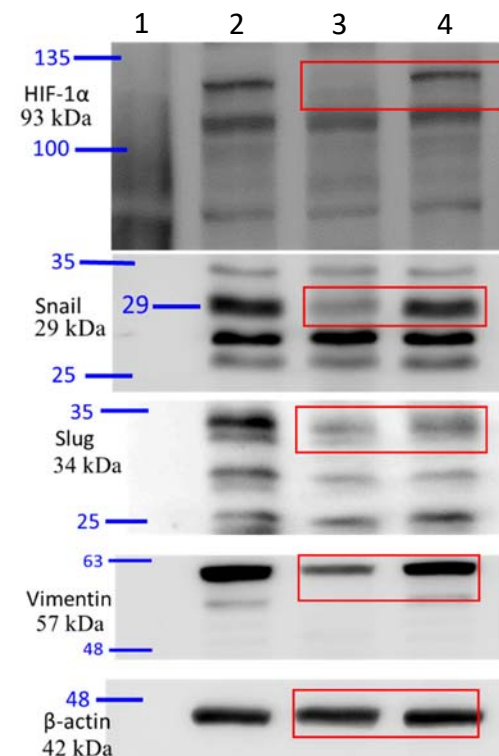
Anti-β-actin (Novus, AC-15; 42 kDa)

Western blots of Figure 2D



Anti-HIF-1α (Proteintech, no. 66730-1-Ig; 93 kDa),
Anti-Snail (Santa Cruz, no.10432; 29 kDa),
Anti-Slug (Cell Signaling, no. 9585; 34 kDa),
Anti-Vimentin (Cell Signaling, no. 5741; 55 kDa),
Anti-β-actin (Novus, AC-15; 42 kDa).

Western blots of Figure 3D



Lane 1. marker

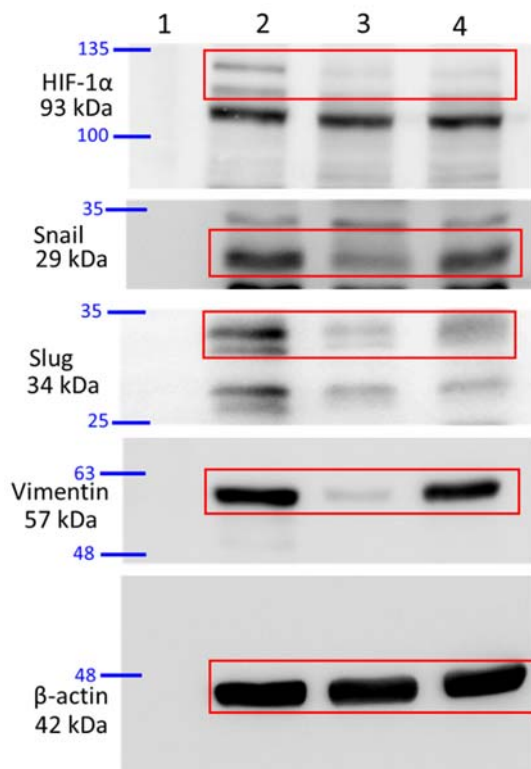
Lane 2. pLKO (ctrl)

Lane 3. pLKO/miR-622

Lane 4. pLKO/miR-622 and miR-622 inhibitor

Anti-HIF-1α (Proteintech, no. 66730-1-Ig; 93 kDa),
Anti-Snail (GeneTex, no. 100754; 41 kDa),
Anti-Slug (Cell Signaling, no. 9585; 34 kDa),
Anti-Vimentin (Cell Signaling, no. 5741; 55 kDa),
Anti-β-actin (Novus, AC-15; 42 kDa).

Western blots of Figure 4D



pLKO/miR-622 and miR-622 inhibitor

Lane 1. marker

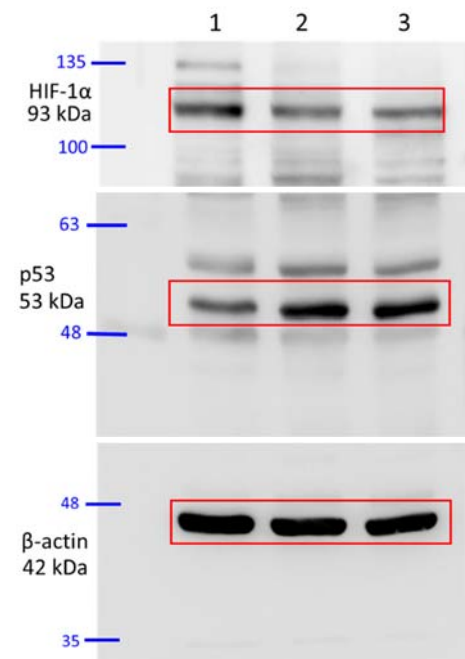
Lane 2. shRNA (ctrl)

Lane 3. shHIF-1α

Lane 4. shHIF-1α and anti-miR-30a

Anti-HIF-1α (Proteintech, no. 66730-1-Ig; 93 kDa),
Anti-Snail (GeneTex, no. 100754; 41 kDa),
Anti-Slug (Cell Signaling, no. 9585; 34 kDa),
Anti-Vimentin (Cell Signaling, no. 5741; 55 kDa),
Anti-β-actin (Novus, AC-15; 42 kDa).

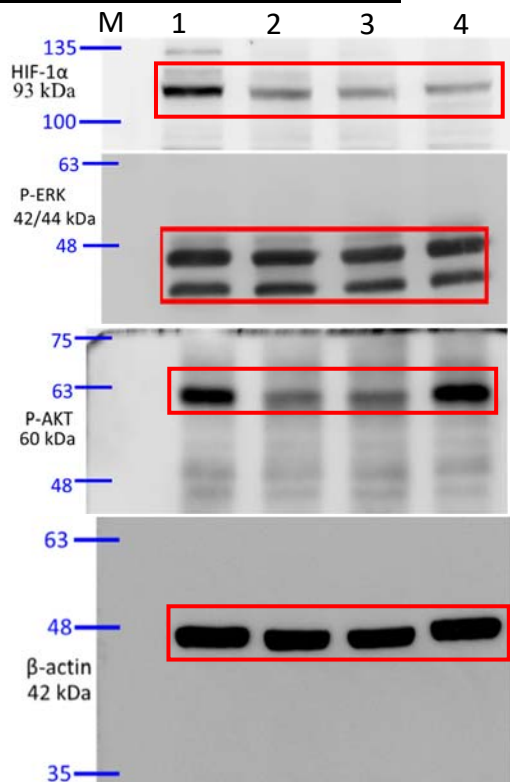
Western blots of Figure 5G



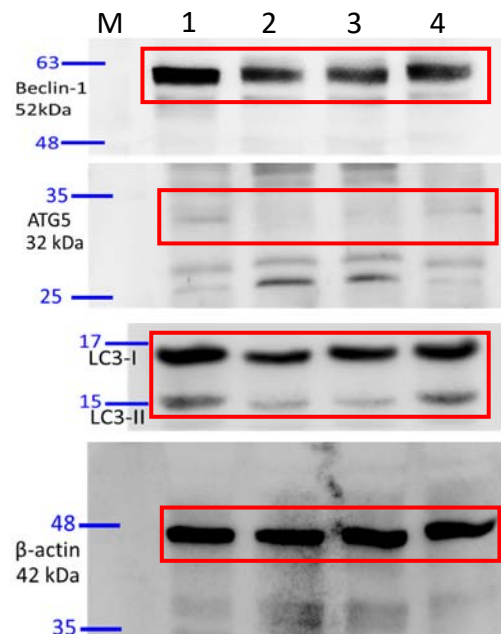
Lane 1. pLKO (ctrl)
Lane 2. pLKO/miR-622
Lane 3. shHIF-1α

Anti-HIF-1α (Proteintech, no. 66730-1-Ig; 93 kDa),
Anti-p53 (GeneTex, no. 128135; 53 kDa),
Anti-β-actin (Novus, AC-15; 42 kDa).

Western blots of Figure 6D

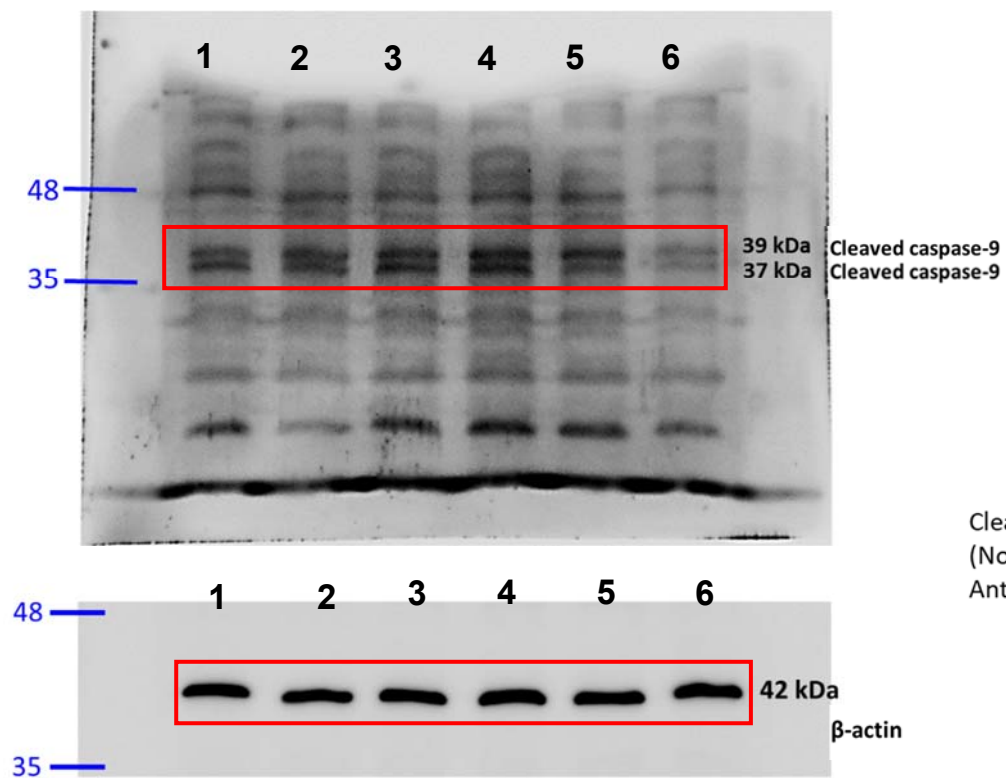


M: Marker
Lane 1: pLKO (ctrl)
Lane 2: pLKO/miR-622
Lane 3: pLKO/miR-622
Lane 4: pLKO/miR-622/miR-30a inhibitor



Anti-HIF-1α (Proteintech, no. 66730-1-Ig; 93 kDa),
Anti-p-ERK (Santa cruz, no. 7383; 41 kDa),
Anti-p-AKT (Santa cruz, no. 16646-R; 34 kDa),
Anti-Beclin-1 (Proteintech, no. 11306-1-AP; 52 kDa),
Anti-ATG5 (GeneTex, no. 31372; 32 kDa),
Anti-LC3B (GeneTex, no. 127375; 15 kDa),
Anti-β-actin (Novus, AC-15; 42 kDa).

Western blots of Figure 6E



Cleaved caspase-9
(Novus, no. NB100-56118; 37 KDa),
Anti-β-actin (Novus, AC-15; 42 KDa).

- Lane 1: pLKO (ctrl)
- Lane 2: pLKO (ctrl)/docetaxel
- Lane 3: pLKO/miR-622
- Lane 4: pLKO/miR-622/docetaxel
- Lane 5: pLKO/miR-622/anti-miR-30a
- Lane 6: pLKO/miR-622/anti-miR-30a/docetaxel