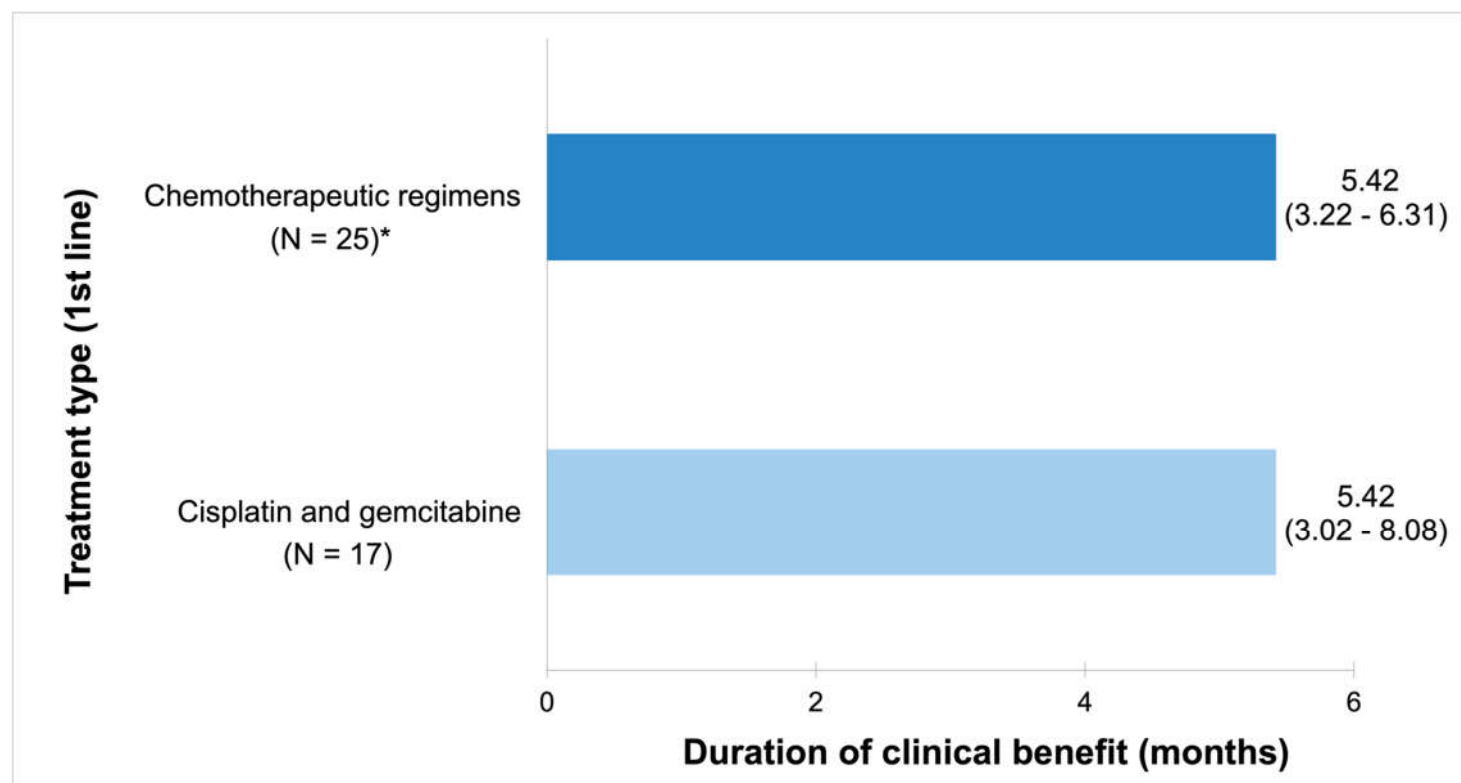
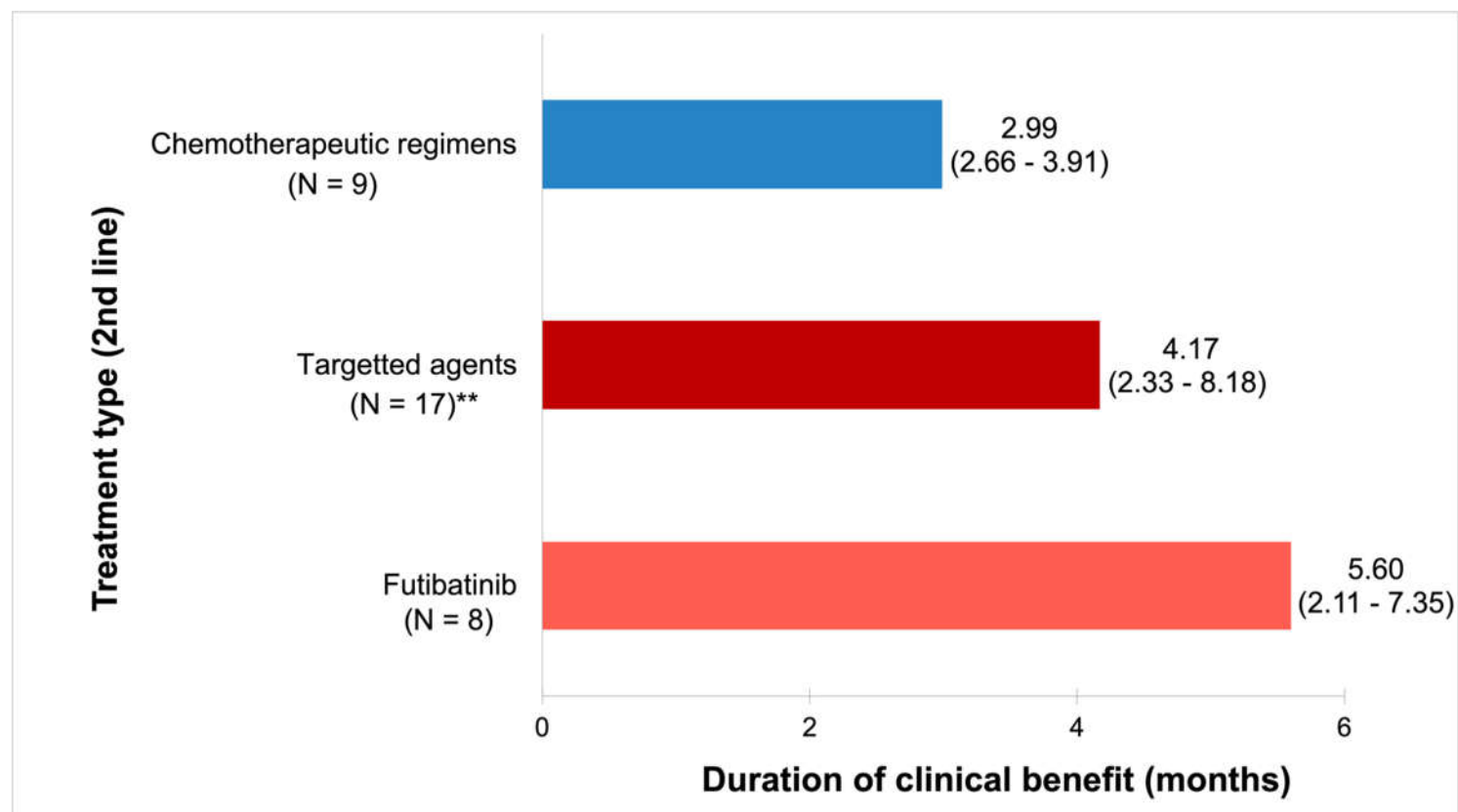


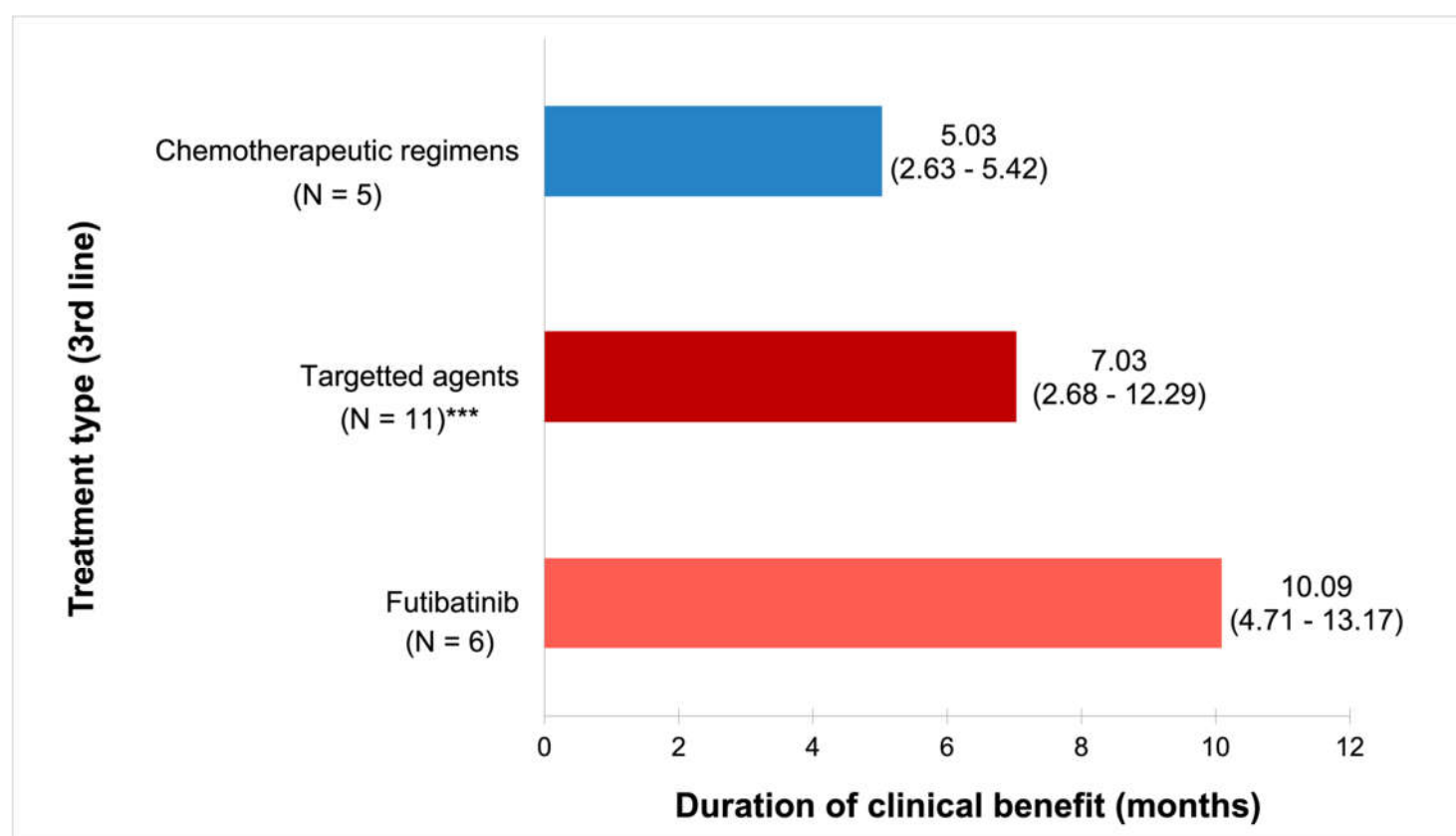
A



B



C



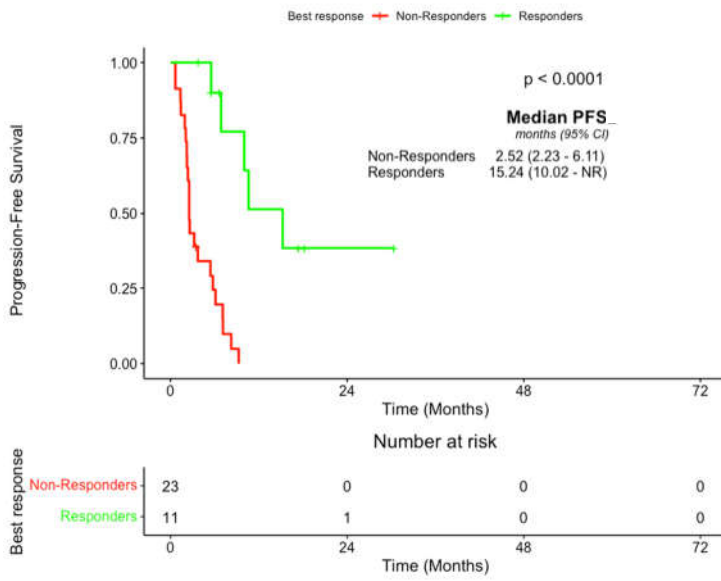
**Supplementary Figure S1: Median duration of clinical benefit following systemic therapy in a 1<sup>st</sup> line (AB), 2<sup>nd</sup> line (B) and 3<sup>rd</sup> line setting (C). Clinical benefit refers to patients achieving complete response, partial response or stable disease as their best overall treatment response.**

**\* Includes 2 patients receiving immunotherapy and chemotherapy.**

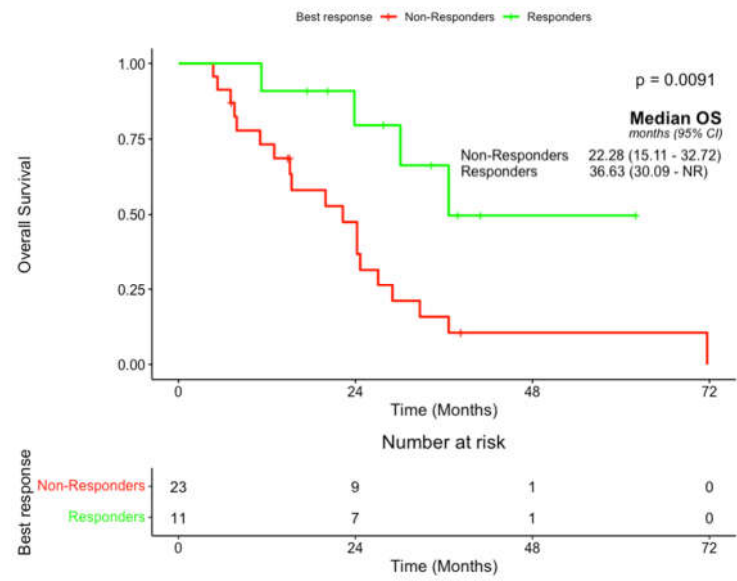
**\*\* Includes 1 patient receiving targeted agent and chemotherapy.**

**\*\*\* Includes 1 patient receiving targeted agent and immune checkpoint inhibitor and 1 patient receiving targeted agent and chemotherapy.**

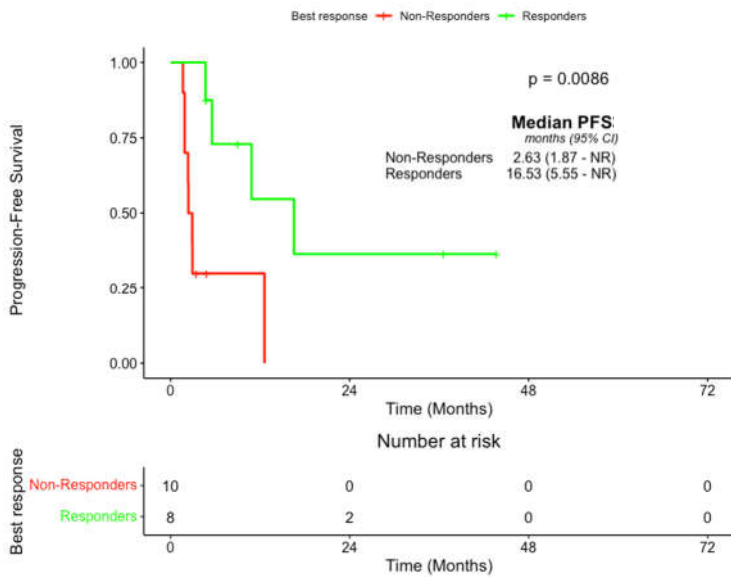
A



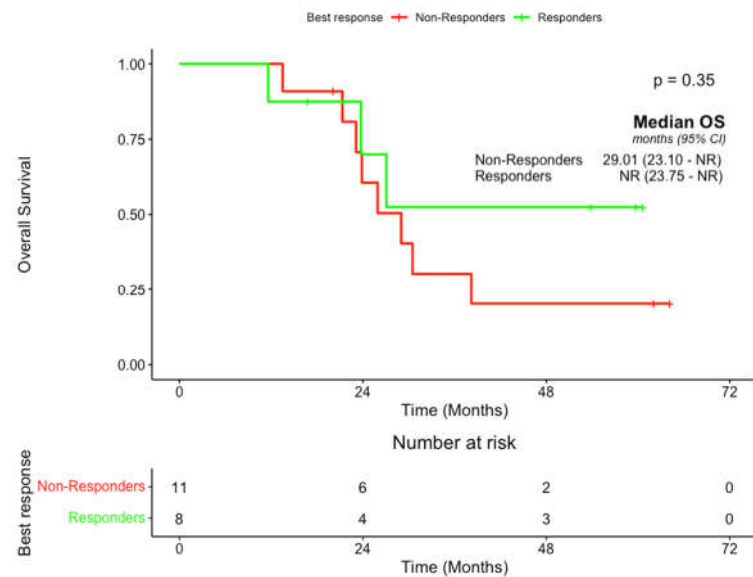
B



C

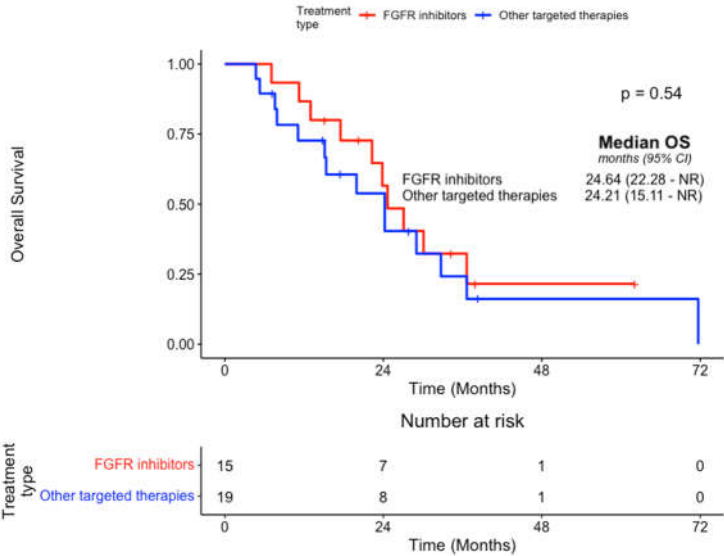
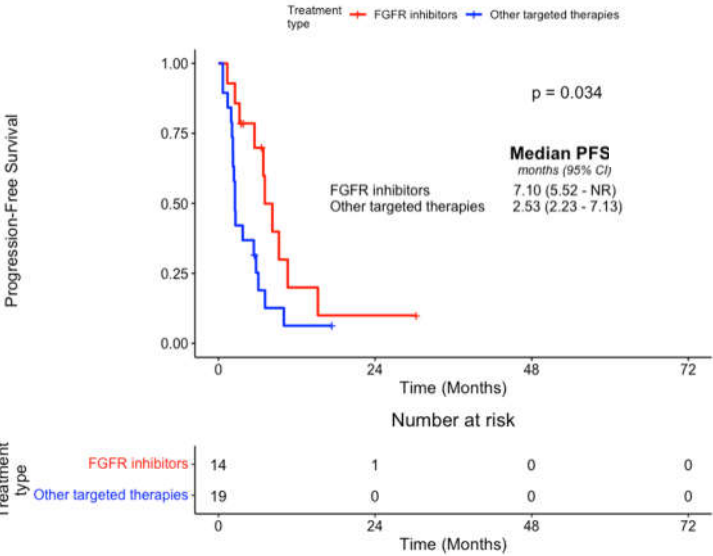


D

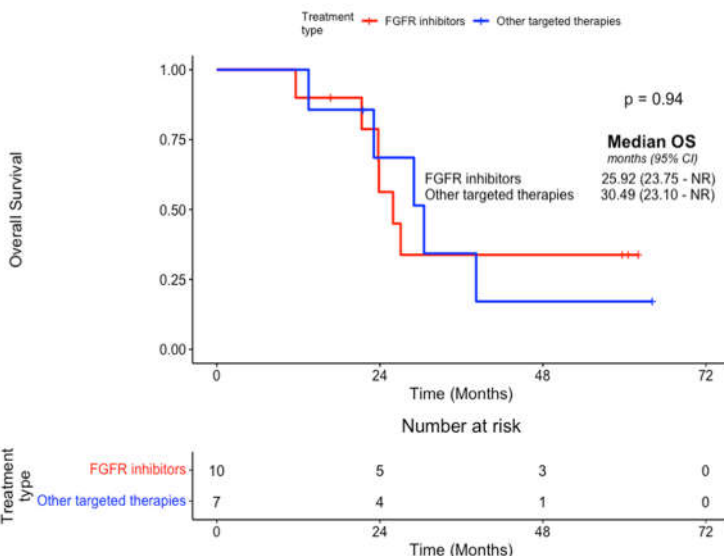
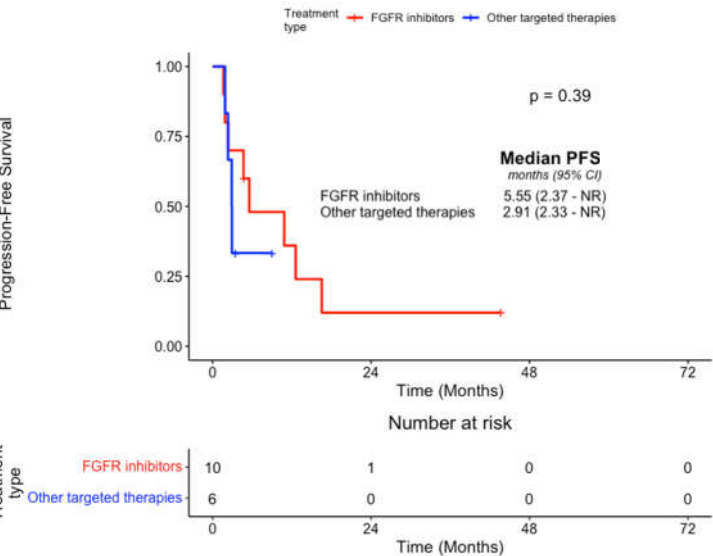


**Supplementary Figure S2: Associations between best overall response on 2<sup>nd</sup> line targeted agents and PFS (A) and OS (B), respectively. Associations were also evaluated between targeted treatment type in a 3<sup>rd</sup> line treatment setting and PFS (C) and OS (D), respectively. Patients achieving partial response were classified as responders whereas subjects attaining stable disease or progressive disease as their best overall response were categorized as non-responders.**

**A** **B**



**C** **D**



**Supplementary Figure S3: Associations between targeted treatment type in a 2<sup>nd</sup> line setting and PFS (A) and OS (B), respectively. Associations were also evaluated between targeted treatment type in a 3<sup>rd</sup> line setting and PFS (C) and OS (D), respectively. Other targeted therapies did not include other systemic agent combinations such as chemotherapy and immunotherapeutic agents.**

A

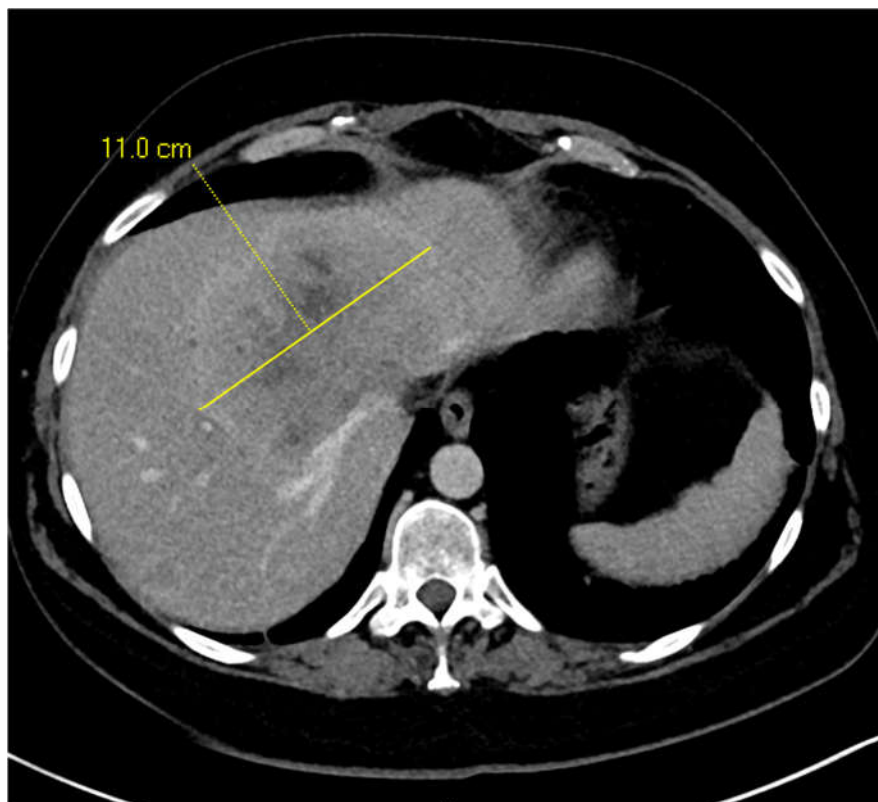


B

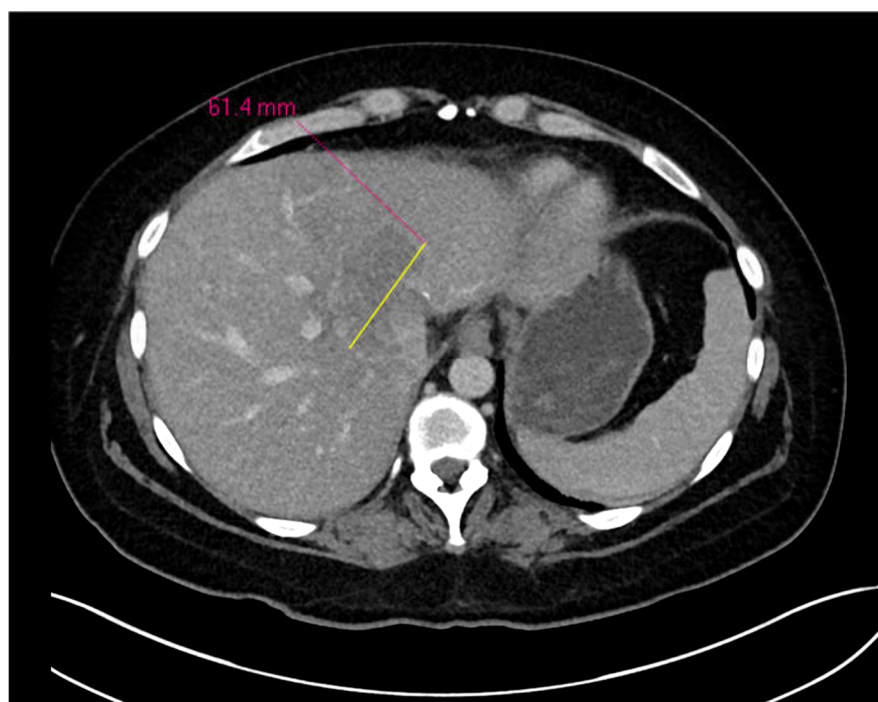


**Supplementary Figure S4:** Pre-treatment baseline scan of Subject # 6 from May 2020 demonstrates 1 liver metastases with largest axial measurement of 11.3 cm (A). Patient achieved partial response in August 2020 while on 2<sup>nd</sup> line futibatinib which demonstrated the greatest regression in liver tumour volume in May 2021 limited to 62.0 mm (B).

**A**



**B**



**Supplementary Figure S5: Pre-treatment** baseline scan of Subject # 46 from May 2020 demonstrates 1 liver metastases with largest axial measurement of 11.0 cm (A). Patient achieved partial response in October 2020 while on 4<sup>th</sup> line futibatinib which demonstrated the greatest regression in liver tumour volume at this timepoint which was limited to 61.4 mm (B).