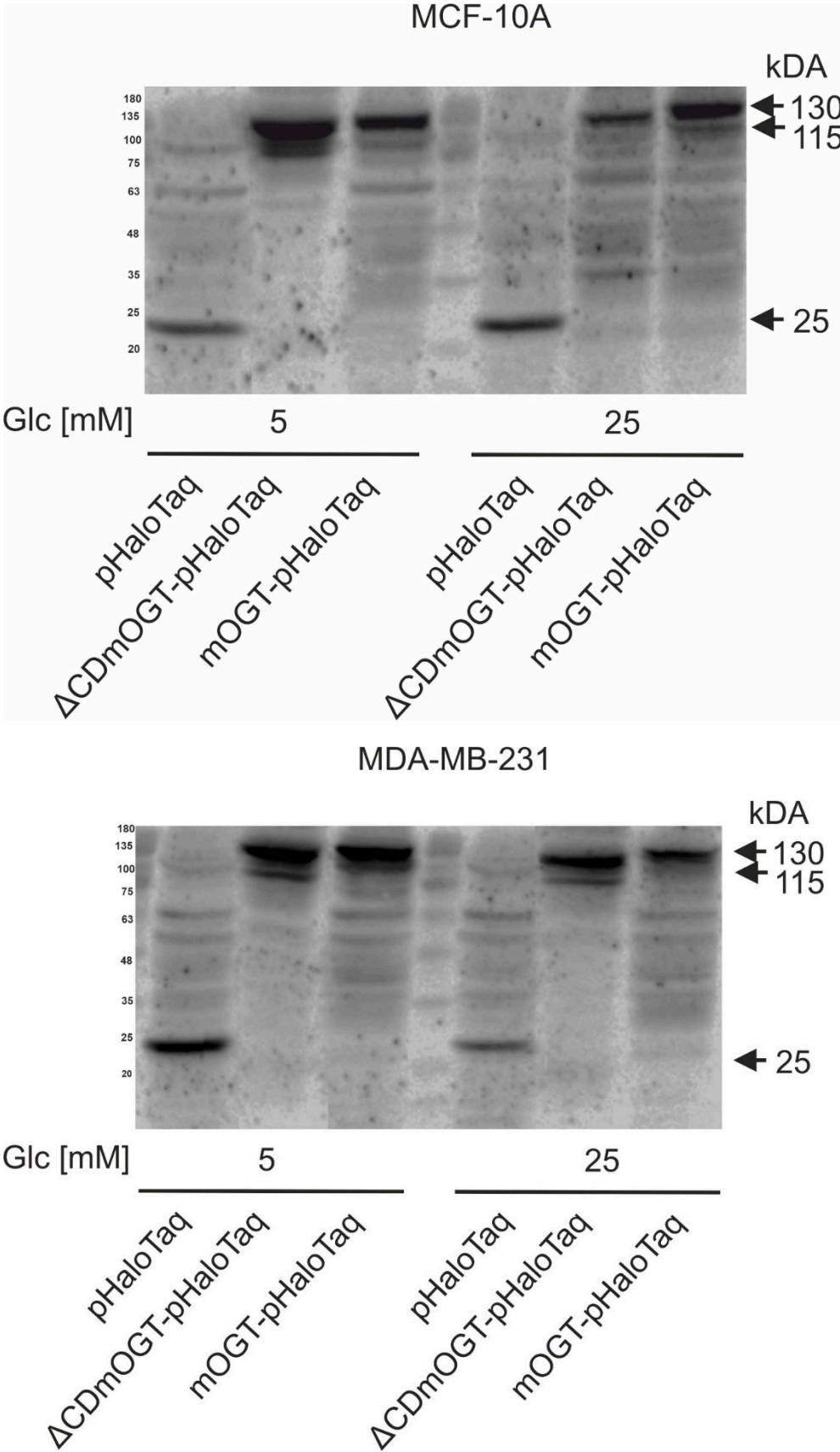


Figure S1. mOGT targets mitochondria in breast cancer MDA-MB-231 and Hs578t cell lines.

Figure 1B.



Hs 578t

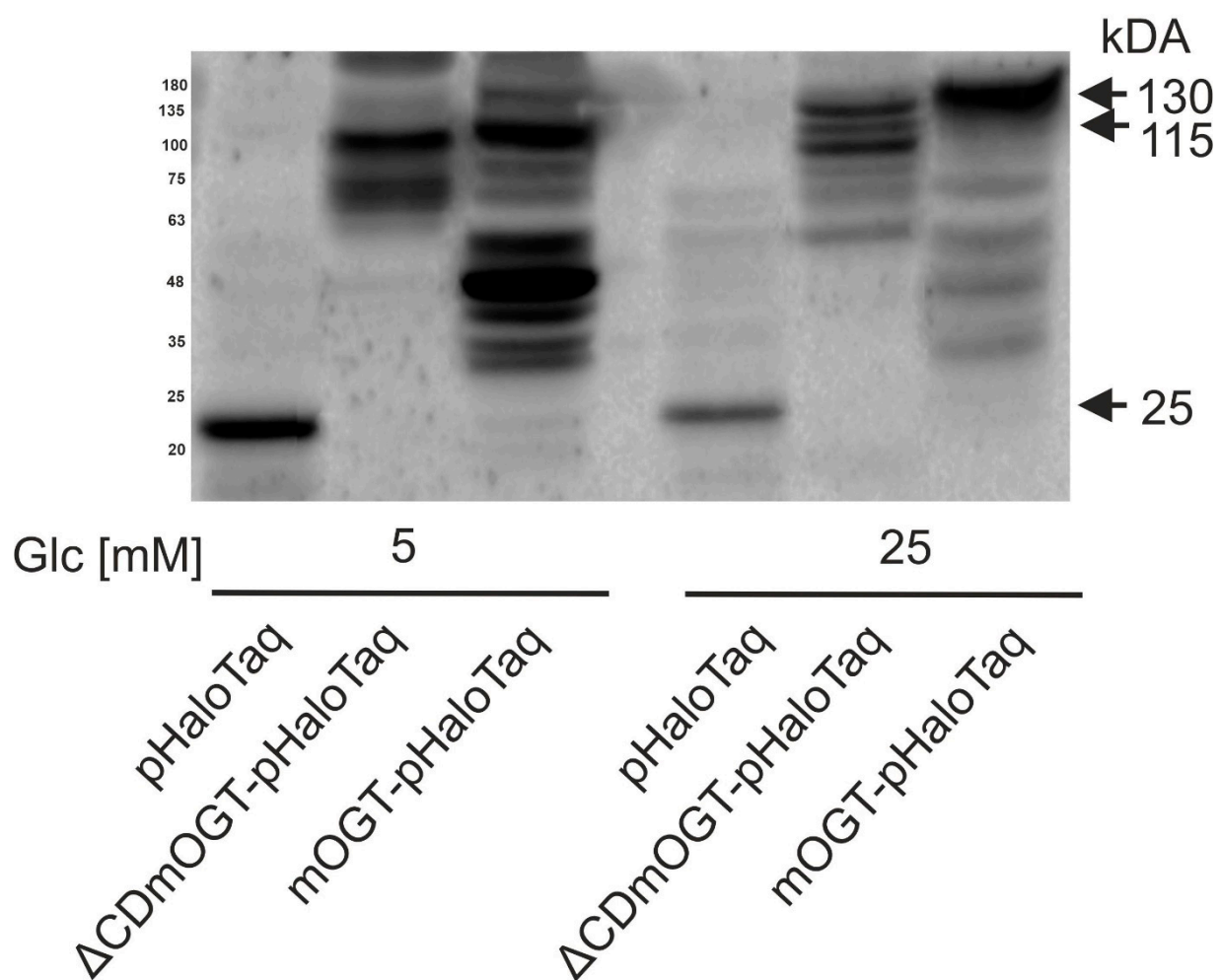
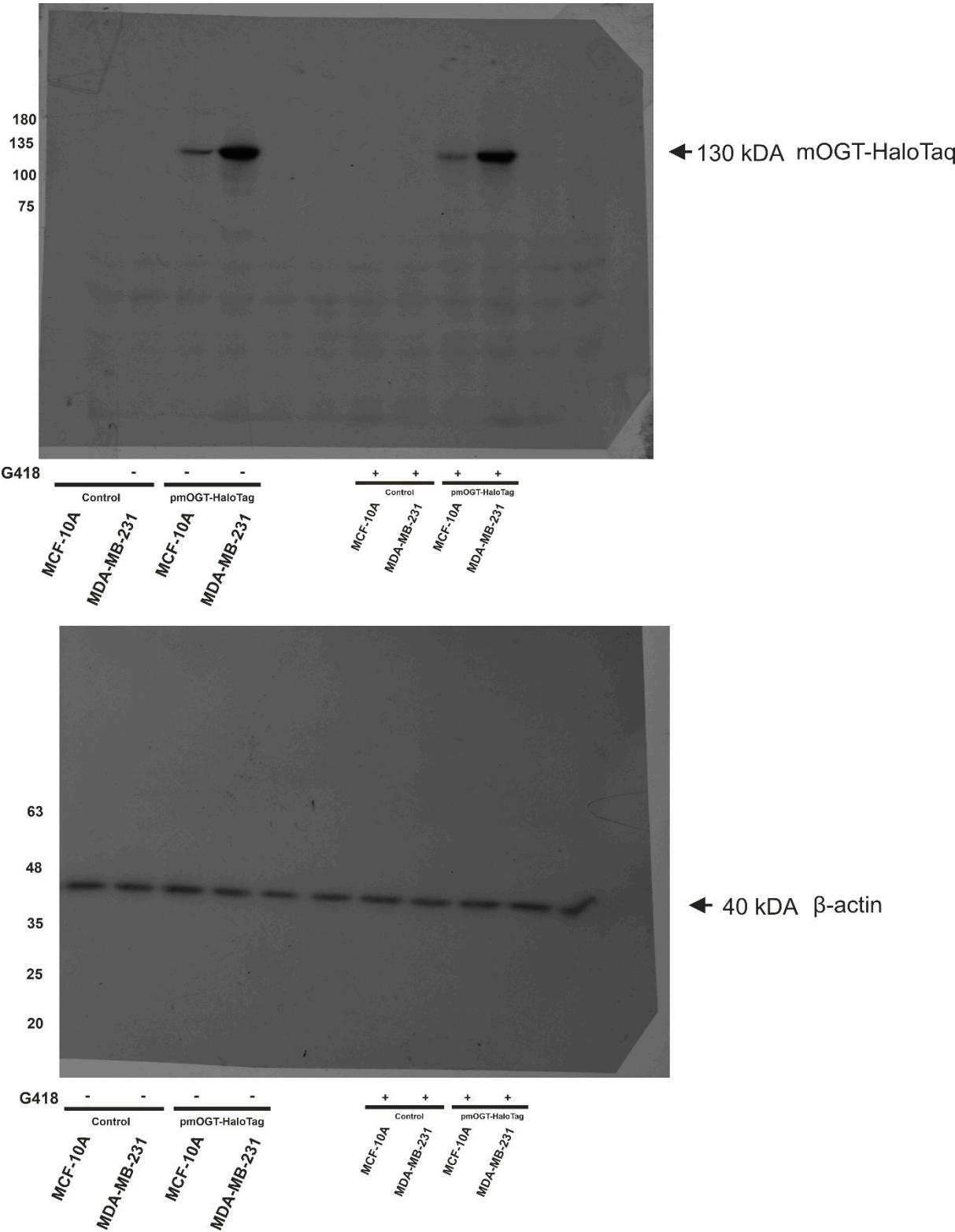


Figure 1D



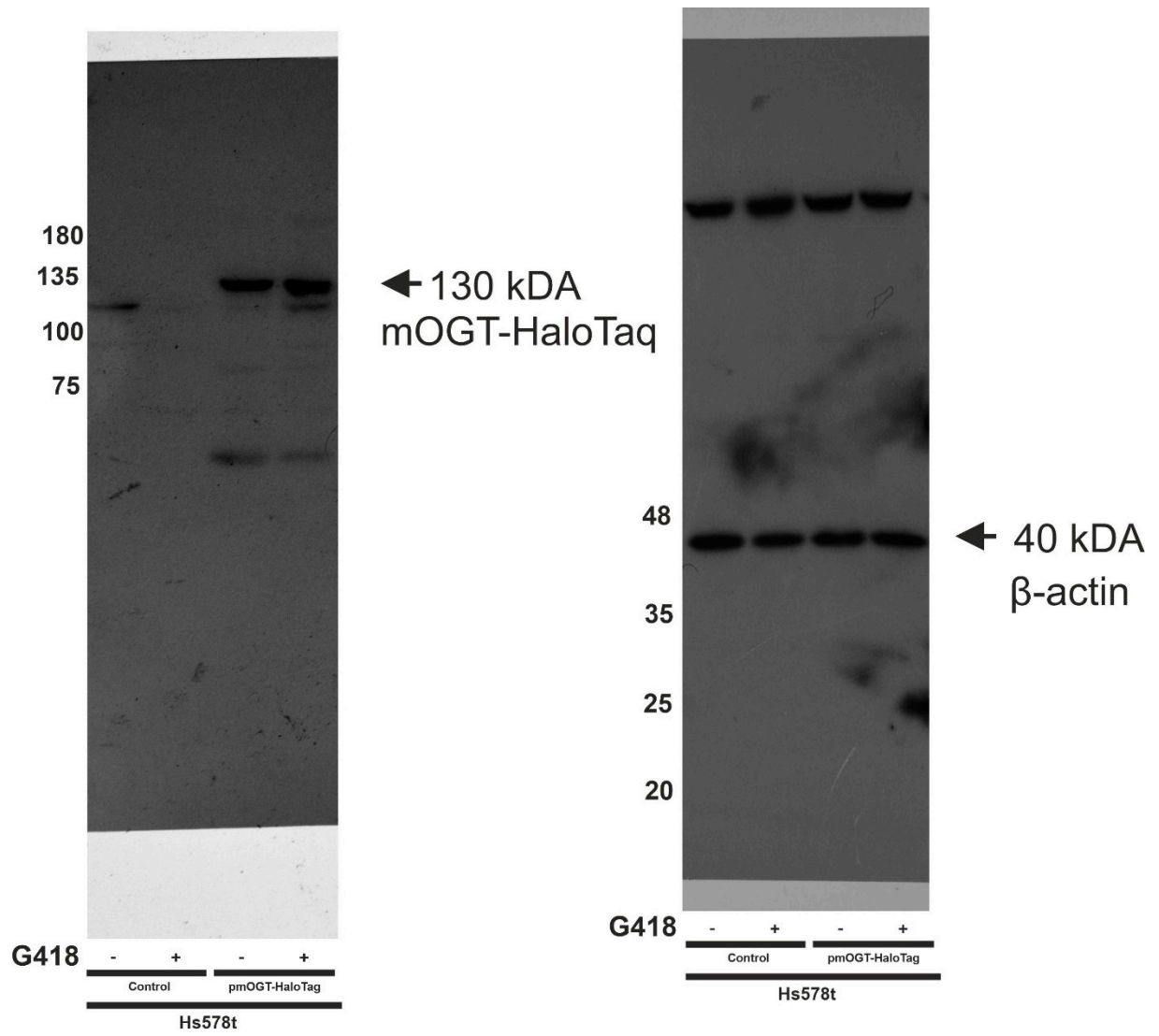


Figure 4A

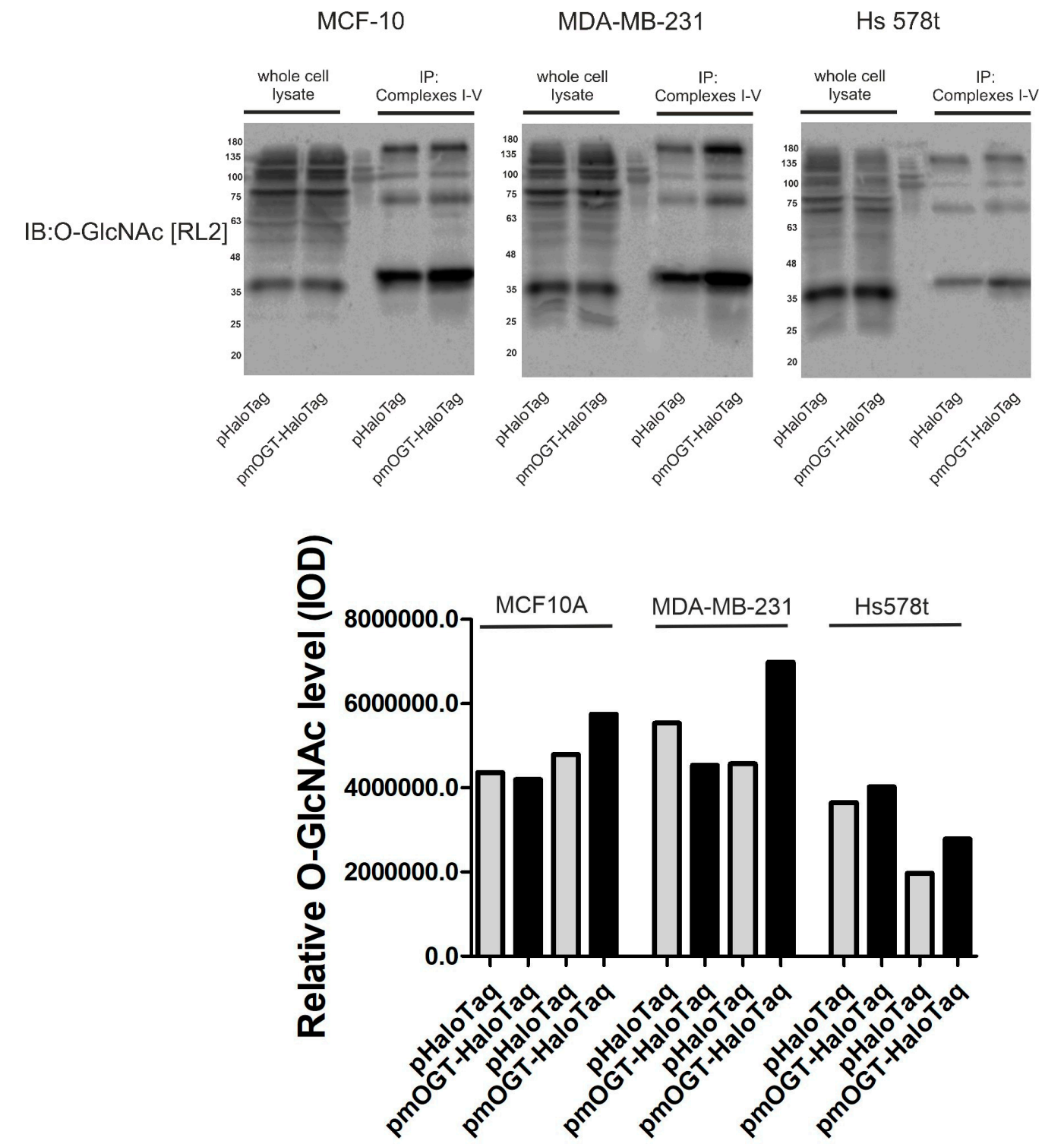


Figure 4B

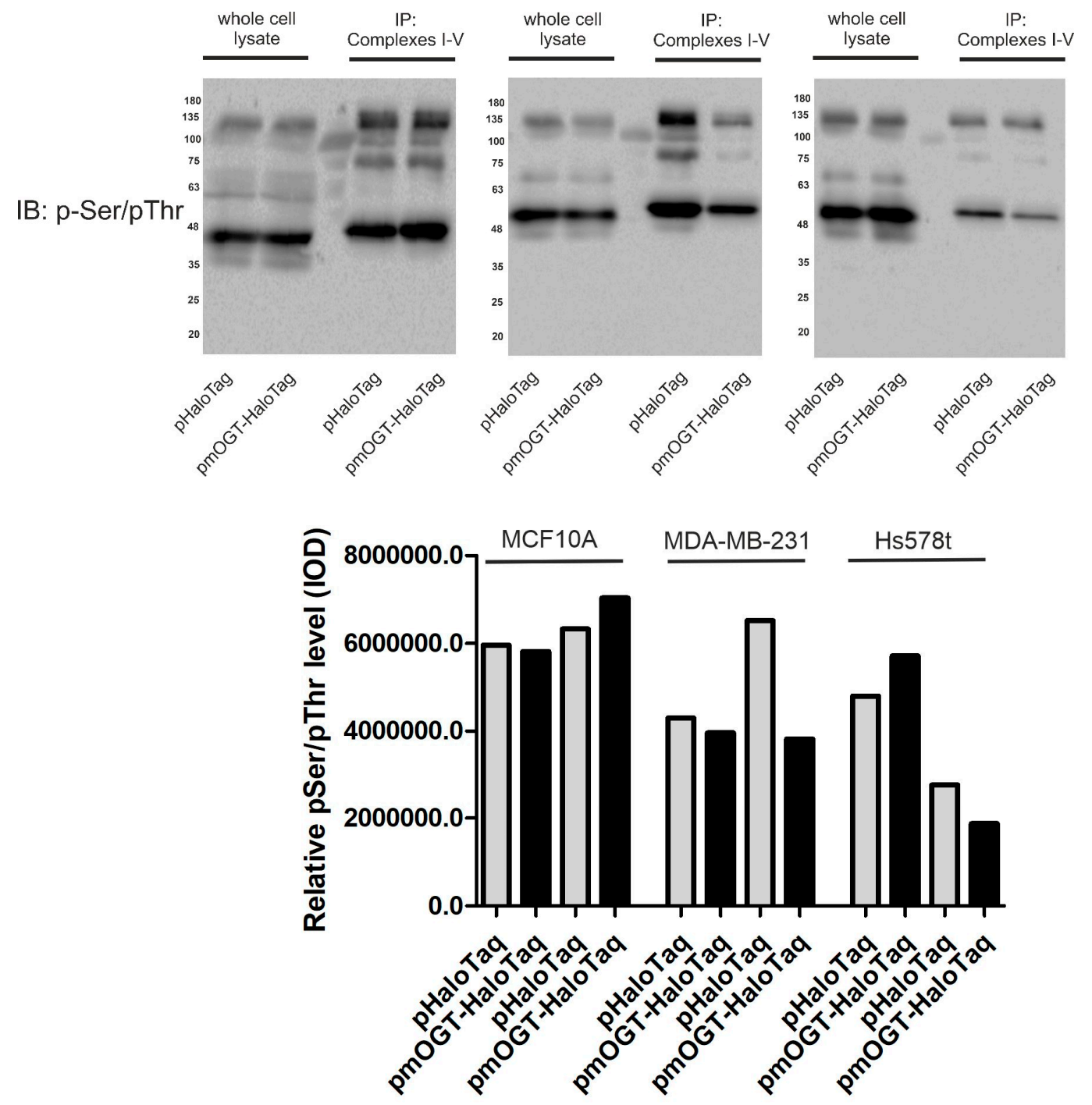
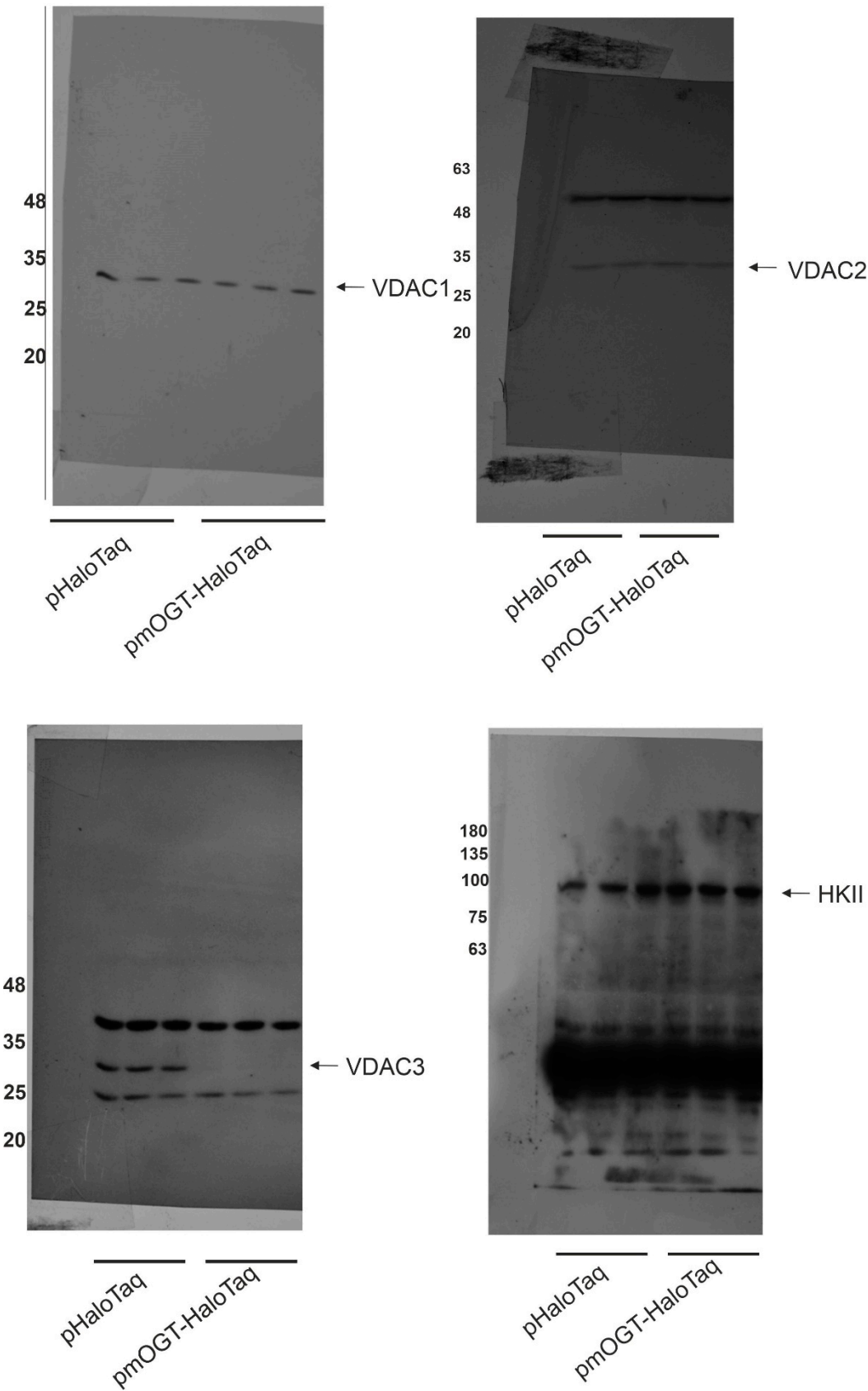
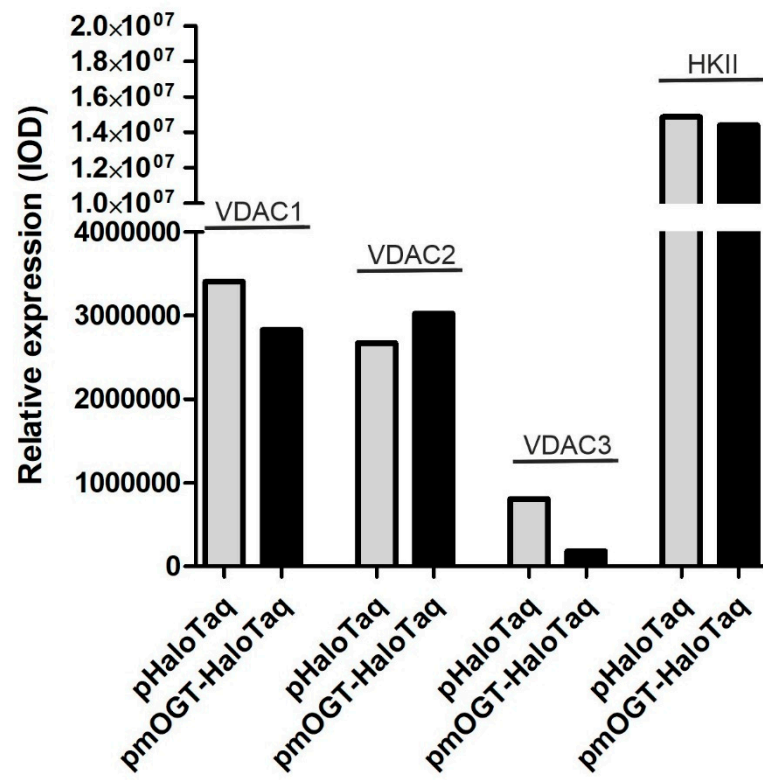


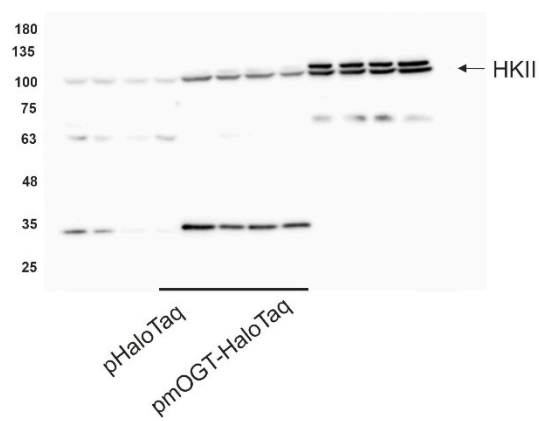
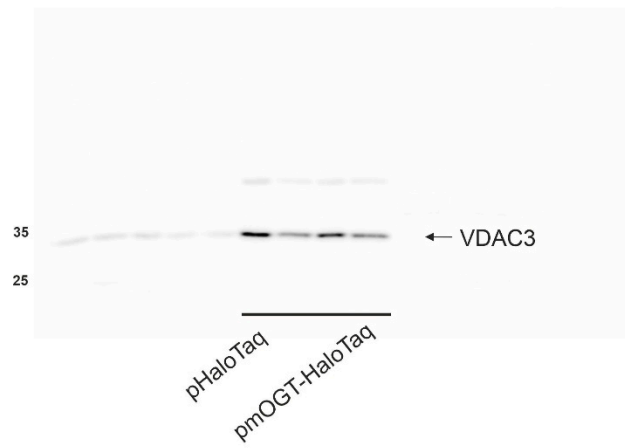
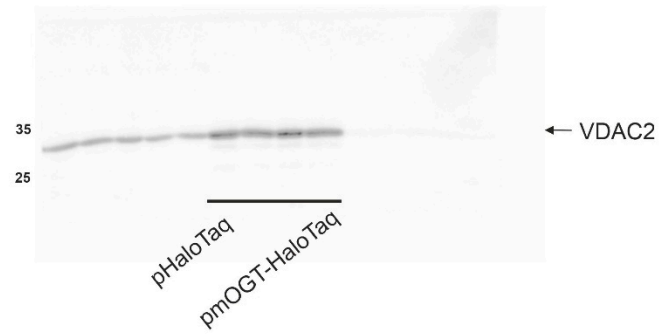
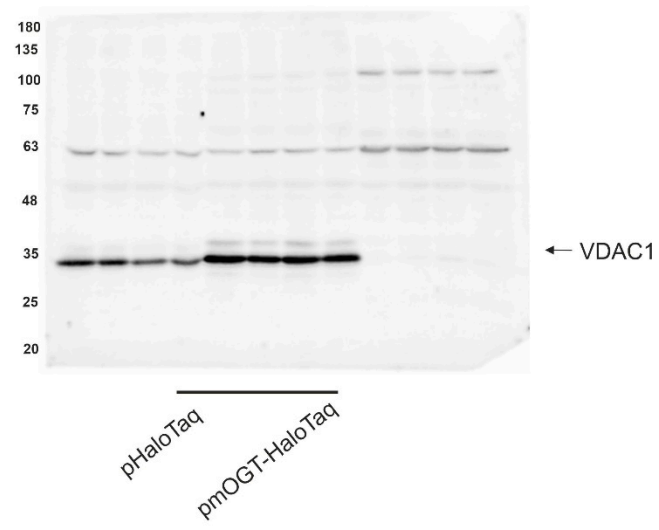
Figure 5Ba

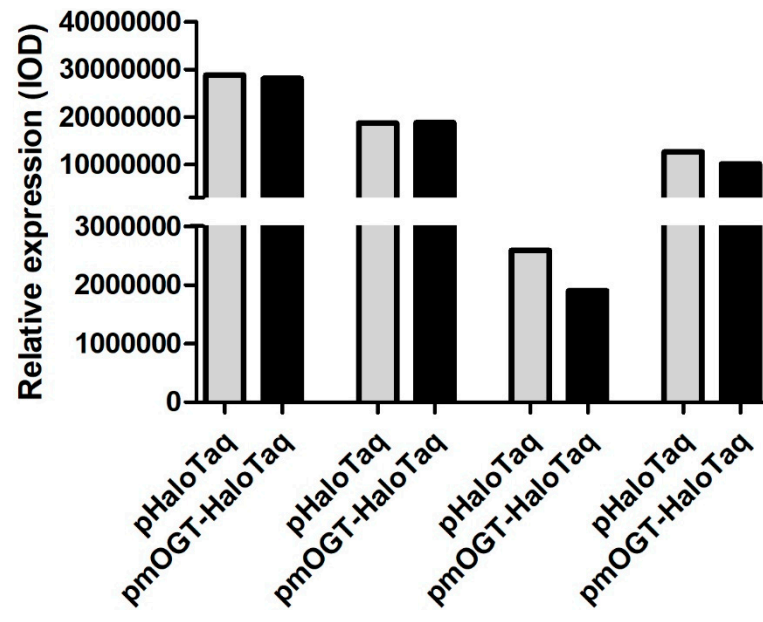
MCF10A



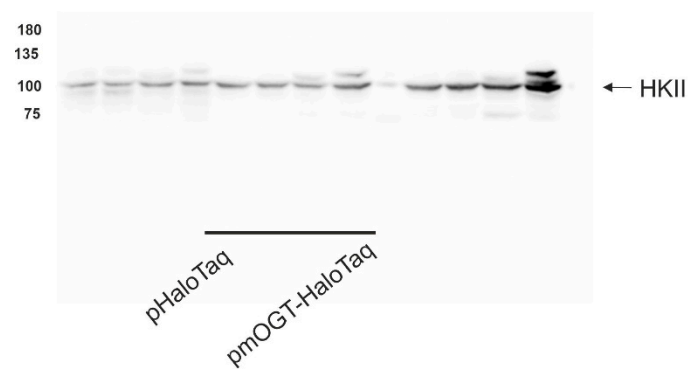
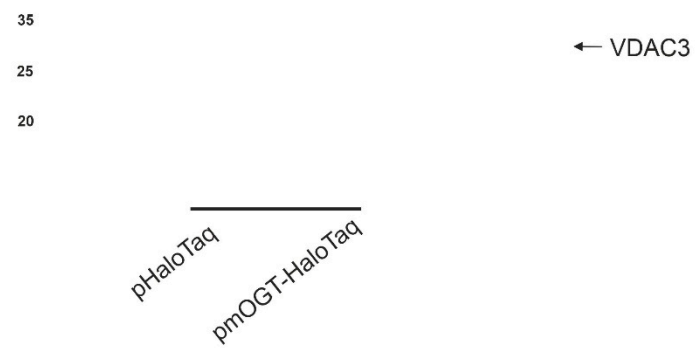
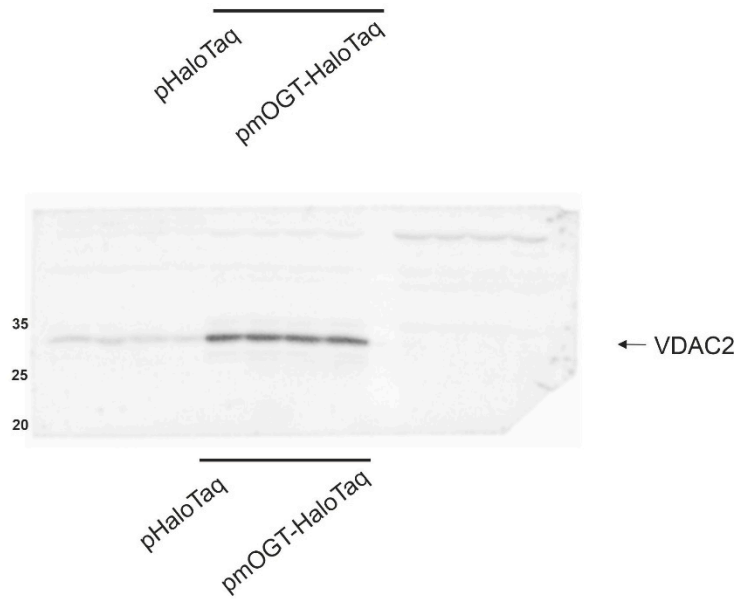


MDA-MB-231





Hs578t



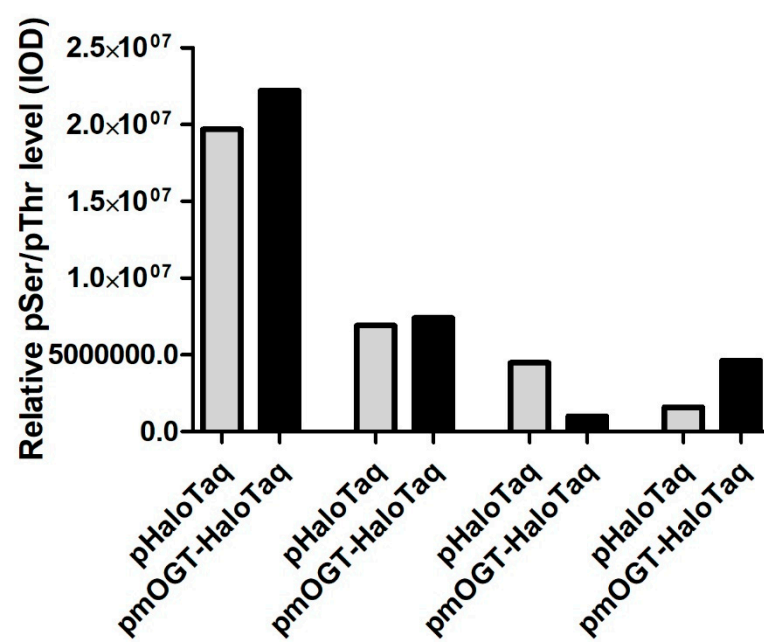
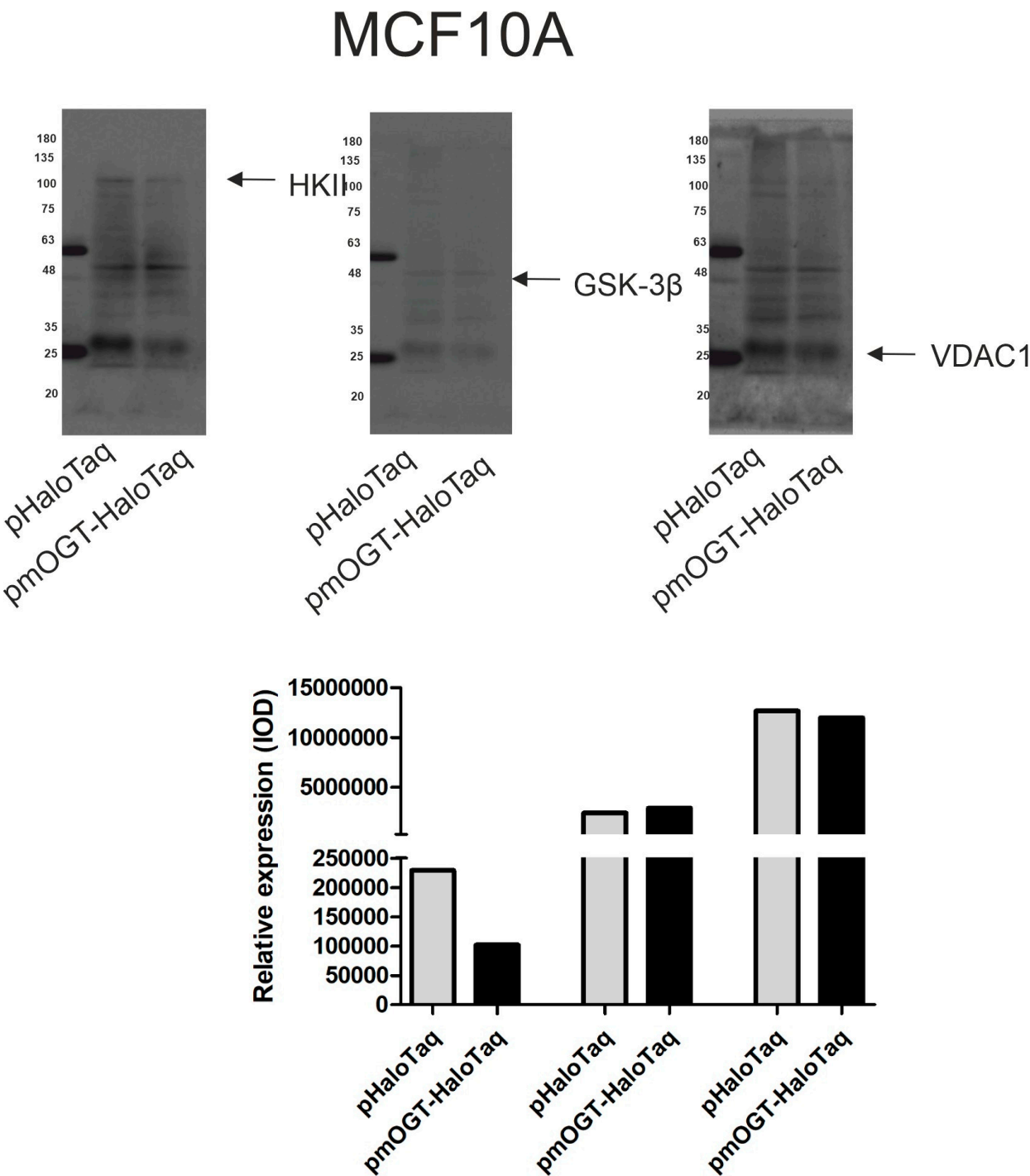
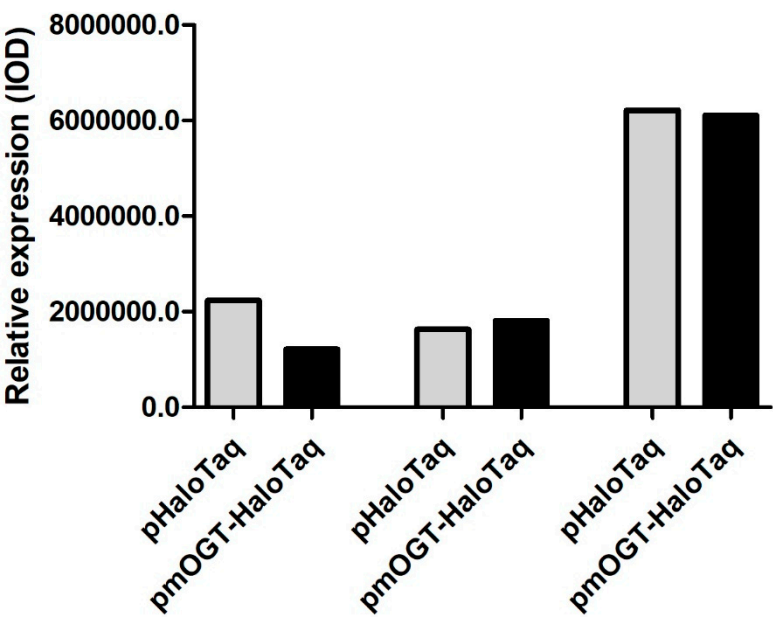
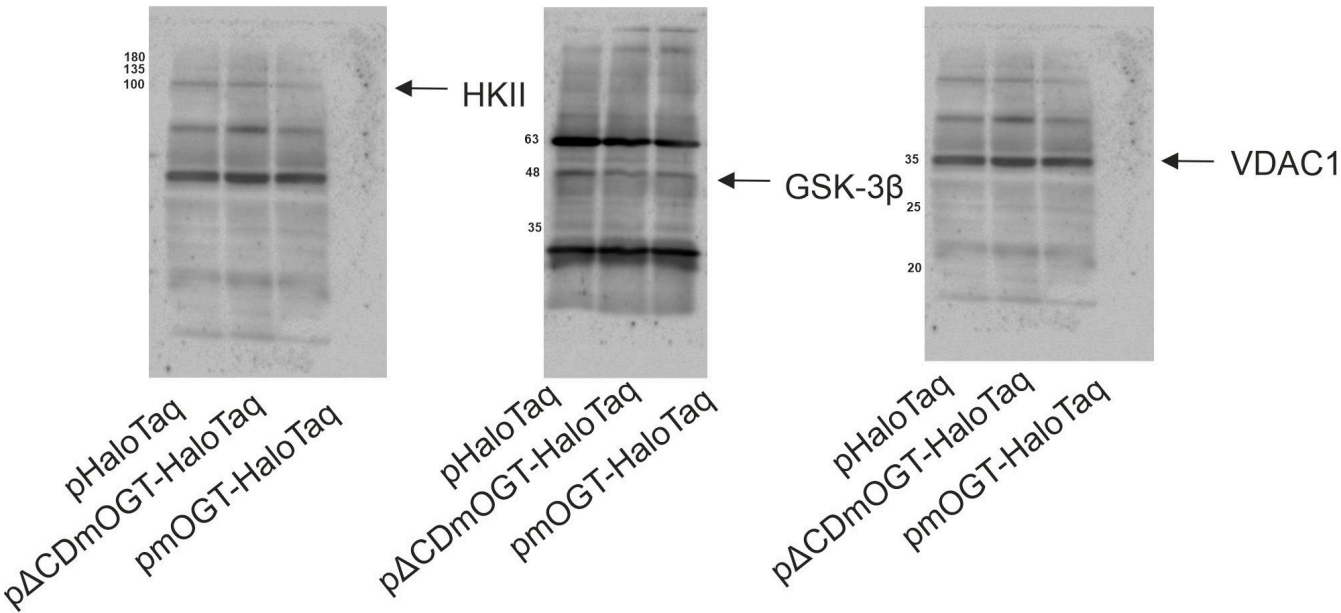


Figure 5Bb



MDA-MB-231



Hs578t

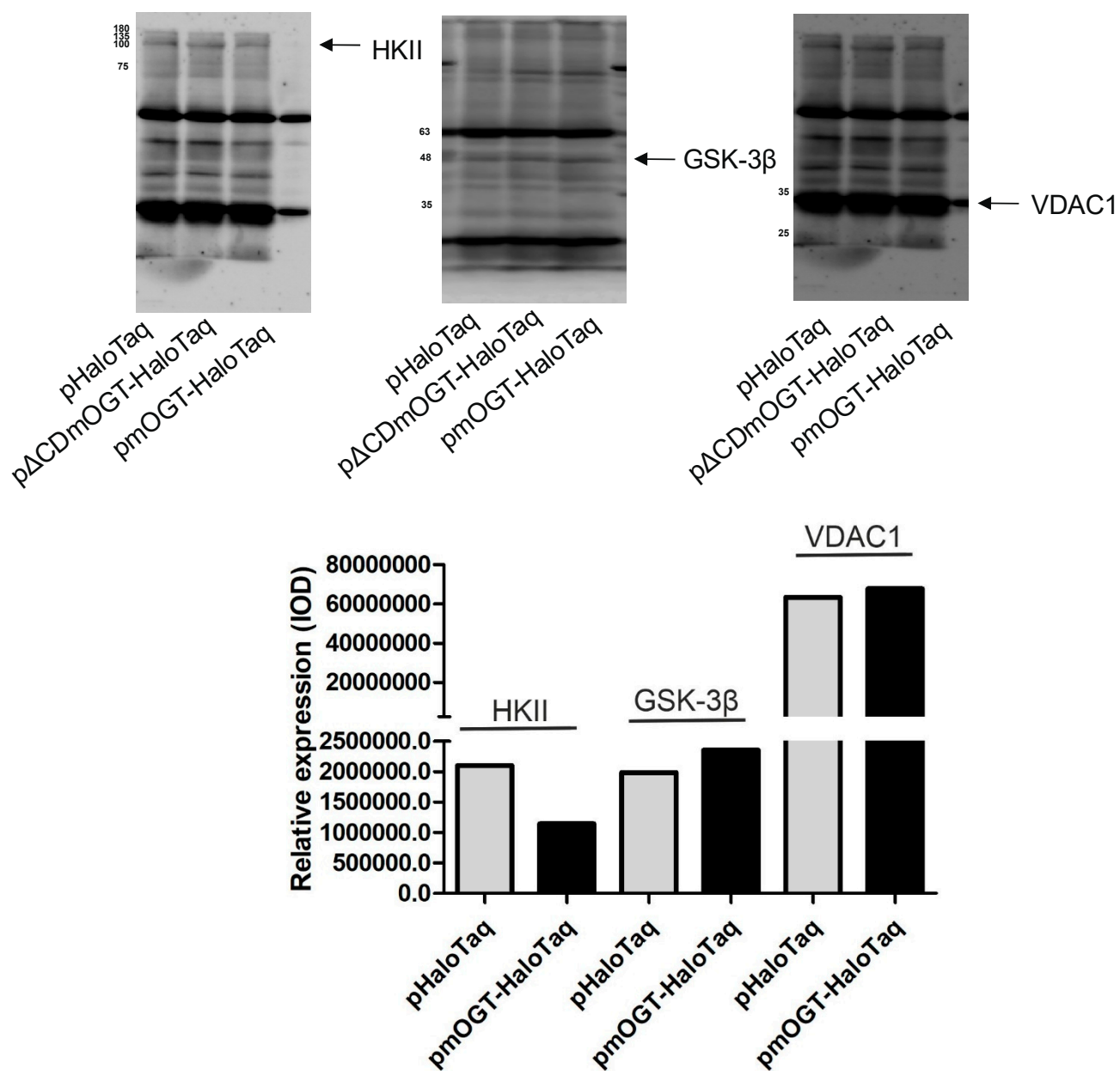


Figure S2. Uncropped original western blot figures.