

Supplementary Materials

Lipase Immobilized on MCFs as Biocatalysts for Kinetic and Dynamic Kinetic Resolution of *sec*-Alcohols

Dominika Stradomska ¹, Monika Heba ², Aleksandra Czernek ², Nikodem Kuźnik ², Danuta Gillner ^{2,3}, Katarzyna Maresz ⁴, Wojciech Pudło ¹, Andrzej Jarzębski ^{1,4} and Katarzyna Szymańska ^{1,*}

¹ Department of Chemical Engineering and Process Design, Silesian University of Technology, 44-100 Gliwice, Poland; dominika.stradomska@polsl.pl (D.S.); wojciech.pudlo@polsl.pl (W.P.); andrzej.jarzebski@polsl.pl (A.J.)

² Department of Organic Chemistry, Bioorganic Chemistry and Biotechnology, Silesian University of Technology, 44-100 Gliwice, Poland; monika.heba@polsl.pl (M.H.); aleksandracernek@wp.pl (A.C.); nikodem.kuznik@polsl.pl (N.K.); danuta.gillner@polsl.pl (D.G.)

³ Biotechnology Center, Silesian University of Technology, 44-100 Gliwice, Poland

⁴ Institute of Chemical Engineering, Polish Academy of Sciences, 44-100 Gliwice, Poland; k.kisz@iich.gliwice.pl

* Correspondence: katarzyna.szymanska@polsl.pl

Table of Contents:

1. Thermogravimetric analysis (Fig. S1-S3)
2. Process stability of immobilized lipase (Fig. S4)
3. GC chromatograms (Fig. S5-S7)

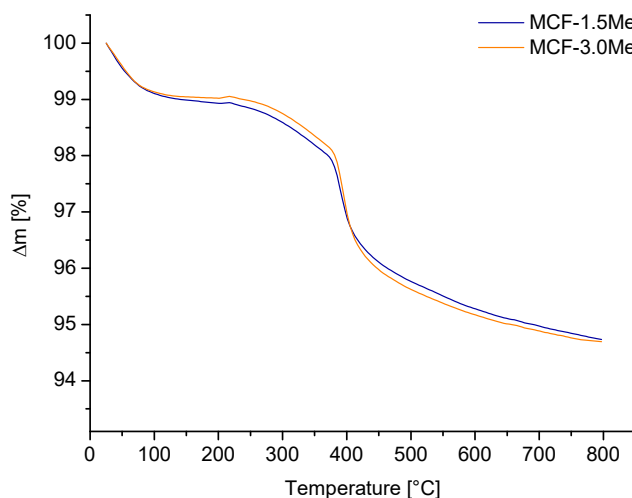


Figure S1. TG analysis of MCF-Me

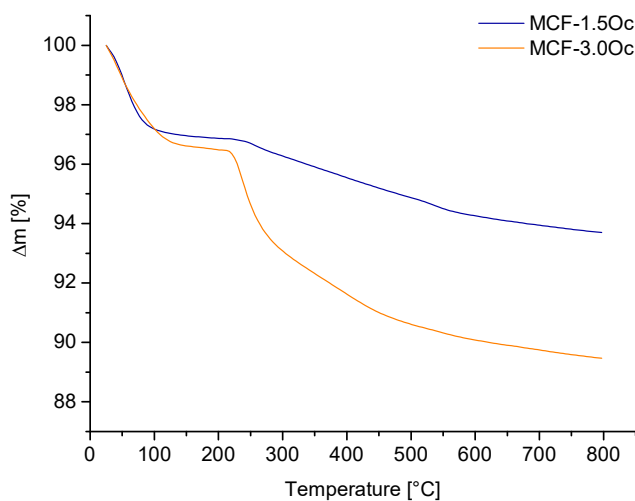


Figure S2. TG analysis of MCF-Oc

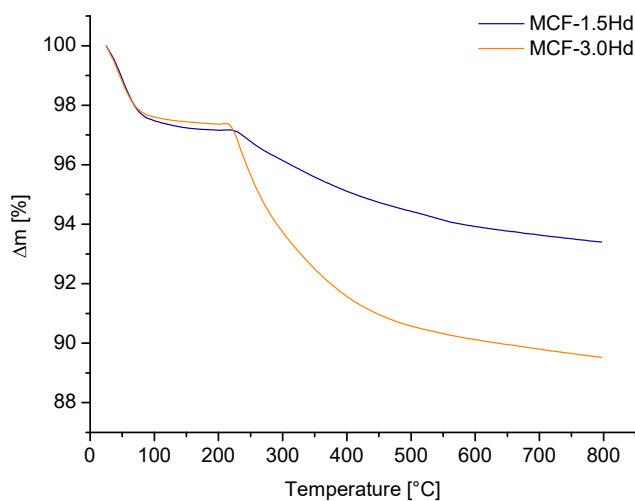


Figure S3. TG analysis of MCF-Hd

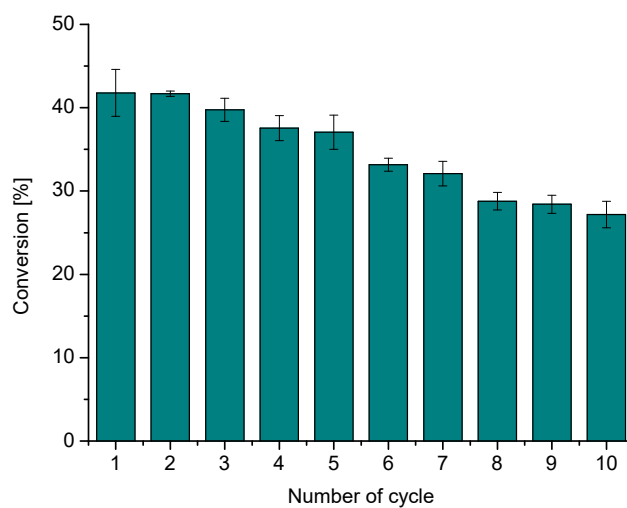


Figure S4. CALB-MCF-3.0Me catalytic cycles in the kinetic resolution of (*rac*)-1-phenylethanol

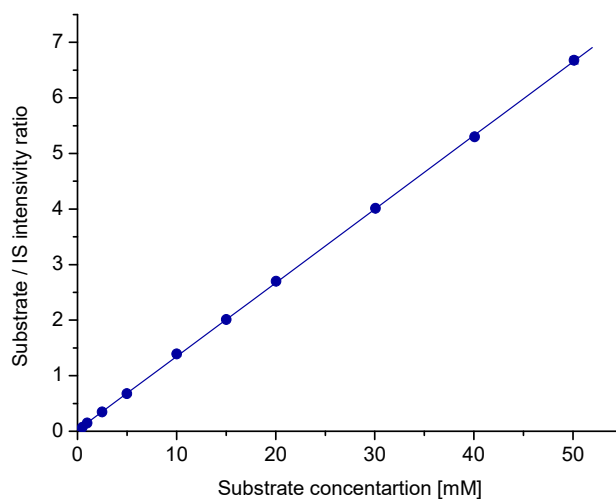


Figure S5. Calibration curve for the (*rac*)-1-phenylethanol with decane as an internal standard (IS)

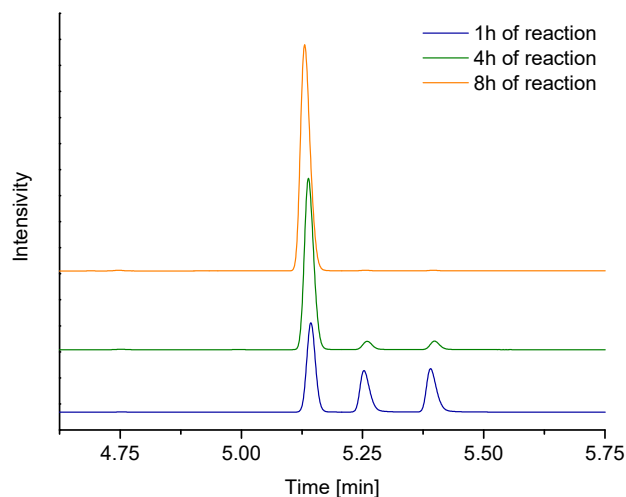


Figure S6. Chromatograms for the DKR of (*rac*)-1-phenylethanol with complex **2** and K₃PO₄ (4.75 min – (*S*)-1-phenylethyl acetate, 5.14 min – (*R*)-1-phenylethyl acetate, 5.26 min – (*R*)-1-phenylethanol, 5.40 min – (*S*)-1-phenylethanol)

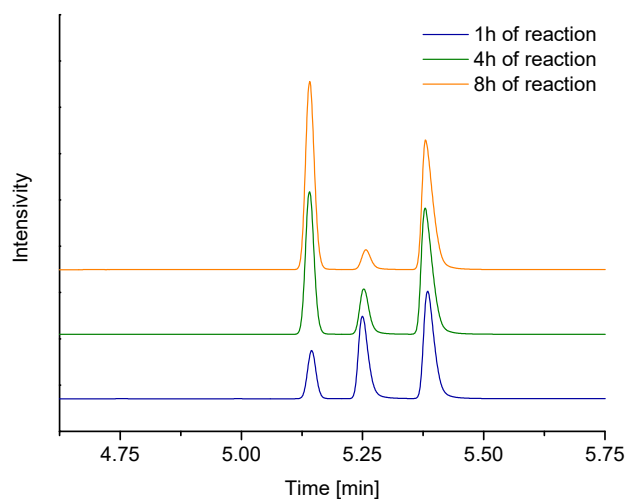


Figure S7. Chromatograms for the DKR of (*rac*)-1-phenylethanol with complex **2** and *t*-BuOK (4.75 min – (*S*)-1-phenylethyl acetate, 5.14 min – (*R*)-1-phenylethyl acetate, 5.26 min – (*R*)-1-phenylethanol, 5.40 min – (*S*)-1-phenylethanol)