


Supplementary Materials: Catalytic Combustion of Toluene over Highly Dispersed Cu-CeO_x Derived from Cu-Ce-MOF by EDTA Grafting Method

Wenjie Sun, Yijia Huang, Xiaomin Li, Zhen Huang, Hualong Xu and Wei Shen *

Collaborative Innovation Center of Chemistry for Energy Materials, Shanghai Key Laboratory of Molecular Catalysis and Innovative Materials and Laboratory of Advanced Materials, Department of Chemistry, Fudan University, Shanghai 200433, China; wjsun17@fudan.edu.cn (W.S.); yjhuang20@fudan.edu.cn (Y.H.); xml17@fudan.edu.cn (X.L.); huangzhen@fudan.edu.cn (Z.H.); shuhl@fudan.edu.cn (H.X.)

* Correspondence: wshen@fudan.edu.cn.

Table S1. The inventory rating in the synthesis of Cu-Ce-MOF-n.

Cu-Ce-MOF-n		
		
Copyright: © 2021 by the authors. Licensee MDPI, Basel, Switzerland. This article is an open access article distributed under the terms and conditions of the Creative Commons Attribution (CC BY) license (http://creativecommons.org/licenses/by/4.0/).	EDTA-2Na /g	CuAc ₂ ·H ₂ O /g
Cu-Ce-MOF-0.05	0.213	0.127
Cu-Ce-MOF-0.1	0.426	0.253
Cu-Ce-MOF-0.2	0.853	0.506
Cu-Ce-MOF-0.3	1.279	0.760
Cu-Ce-MOF-0.4	1.704	1.012

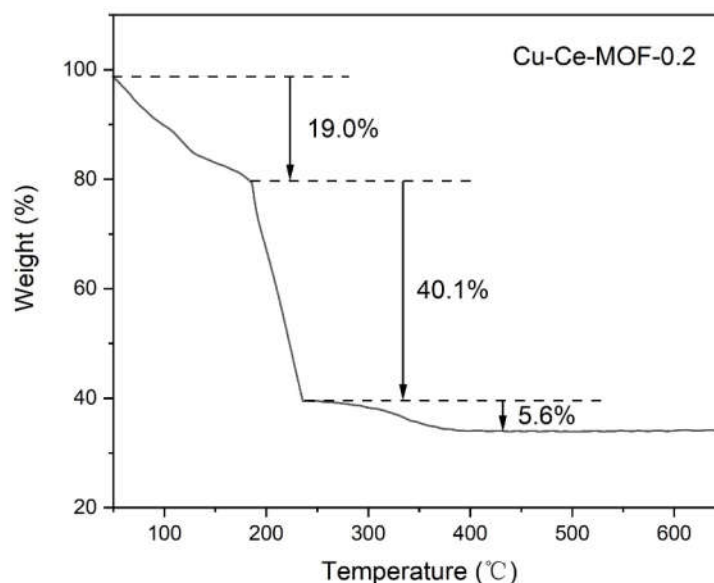


Figure S1. The thermogravimetry curves of Cu-Ce-MOF-0.2.

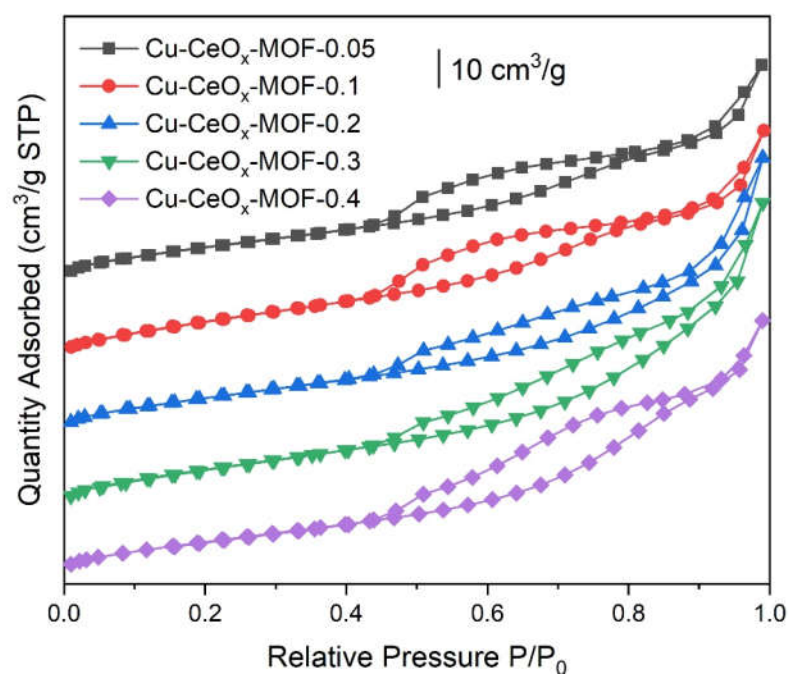
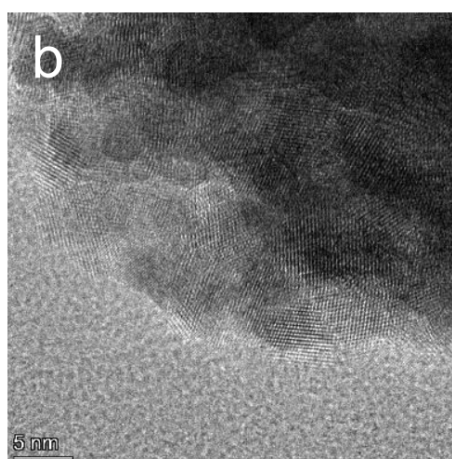
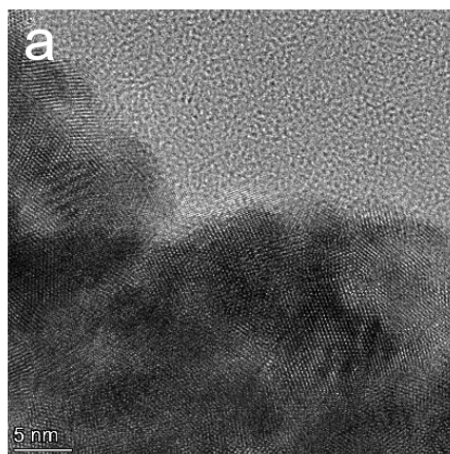


Figure S2. The N_2 adsorption and desorption isotherms of Cu-CeO_x-MOF-n.



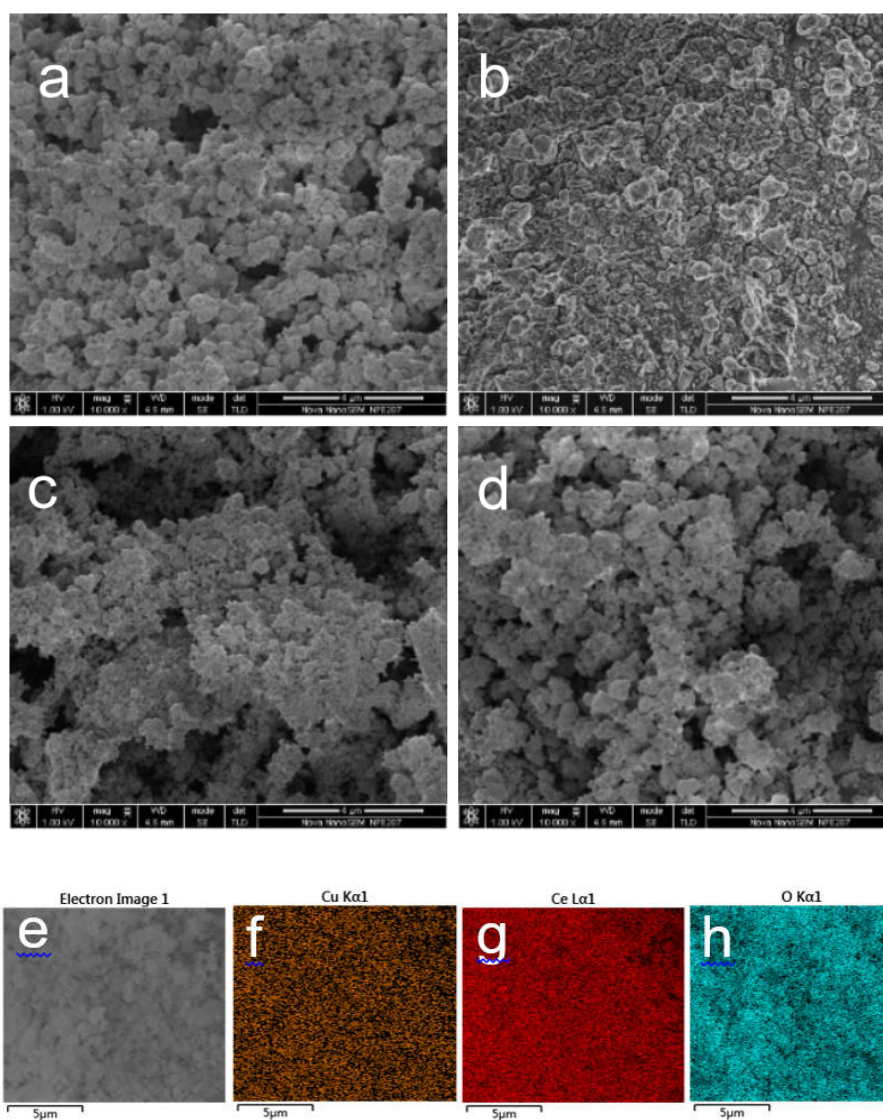
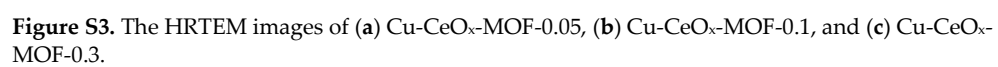


Figure S4. The FESEM images of (a) Cu-CeO_x-MOF-0.05, (b) Cu-CeO_x-MOF-0.1, (c) Cu-CeO_x-MOF-0.3, (d) Cu-CeO_x-MOF-0.4; (e–h) EDS mapping results of Cu-CeO_x-MOF-0.2 ((f) Cu, (g) Ce, and (h) O).

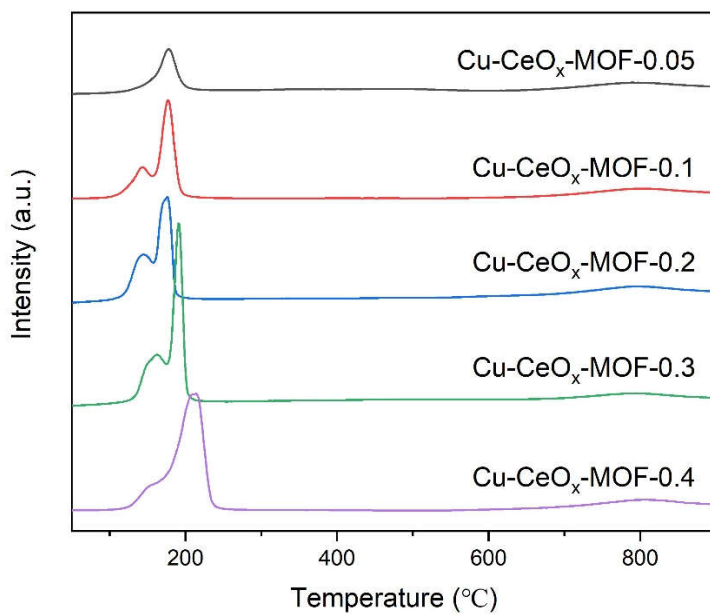


Figure S5. The whole H₂-TPR profiles of Cu-CeO_x-MOF-n.

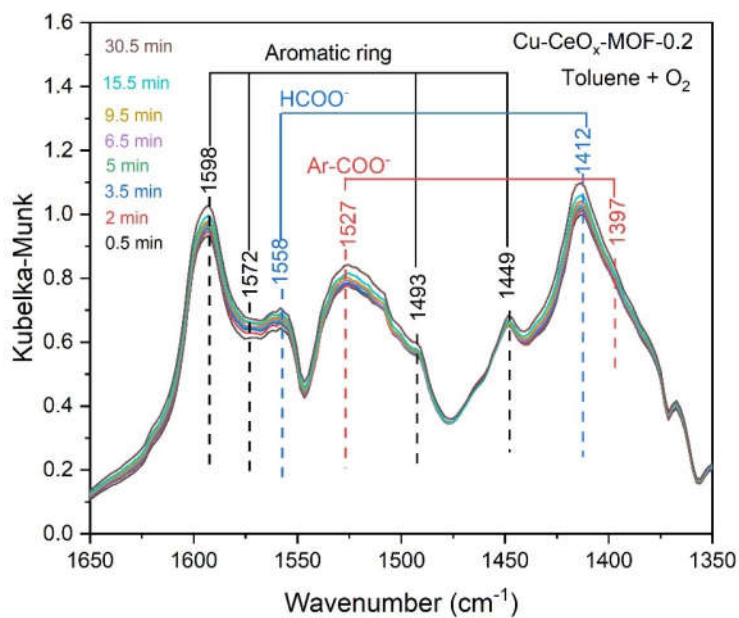


Figure S6. *In situ* DRIFTS results after O₂ introduction over Cu-CeO_x-MOF-0.2 at the range of 1650 cm^{−1} – 1350 cm^{−1}.