

# Electrodeposition of Fe-Complexes on Oxide Surfaces for Efficient OER Catalysis

Sahir M. Al-Zuraiji<sup>1,2</sup>, Tímea Benkó<sup>2</sup>, Krisztina Frey<sup>2</sup>, Zsolt Kerner<sup>2</sup> and József S. Pap<sup>2,\*</sup>

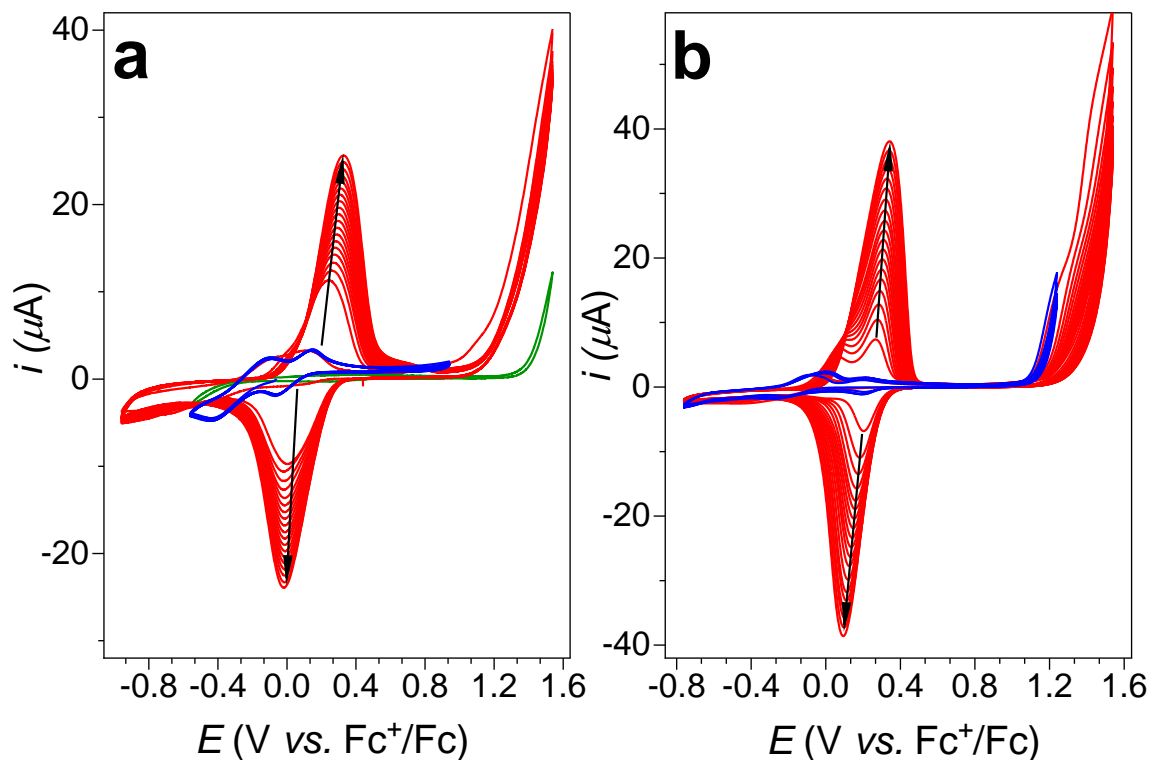
<sup>1</sup> Doctoral School on Materials Sciences and Technologies, Óbuda University, H-1034 Bécsi Street 96/b, 1034 Budapest, Hungary; sahir.aziz@energia.mta.hu

<sup>2</sup> Surface Chemistry and Catalysis Department, Centre for Energy Research, H-1121, Konkoly-Thege Street 29-33, 1525 Budapest, Hungary; pap.jozsef@ek-cer.hu

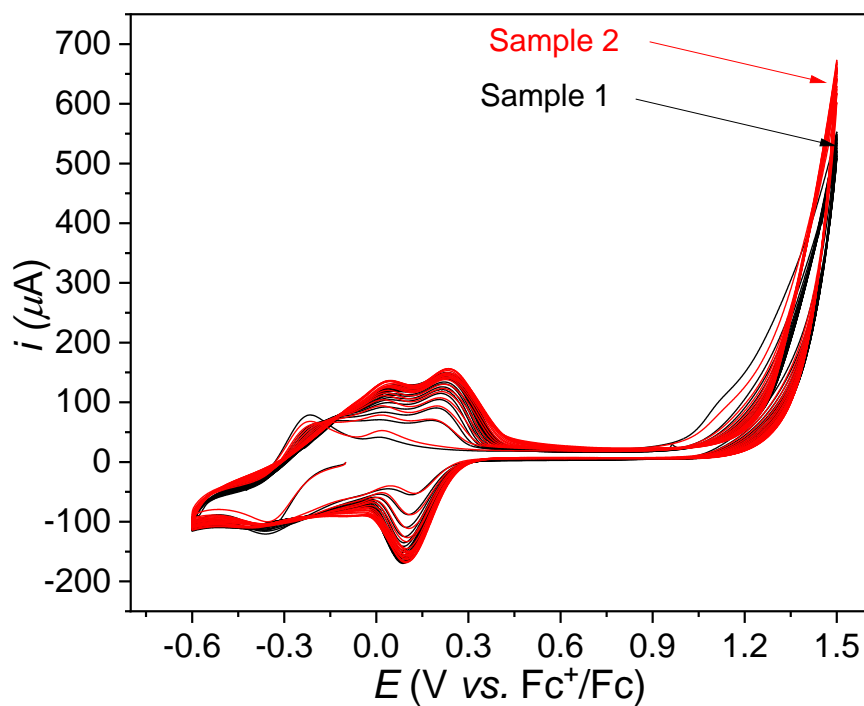
\* Correspondence: pap.jozsef@ek-cer.hu; Tel.: +36-1-392-2222/3284 (J.S.P.)

## Contents

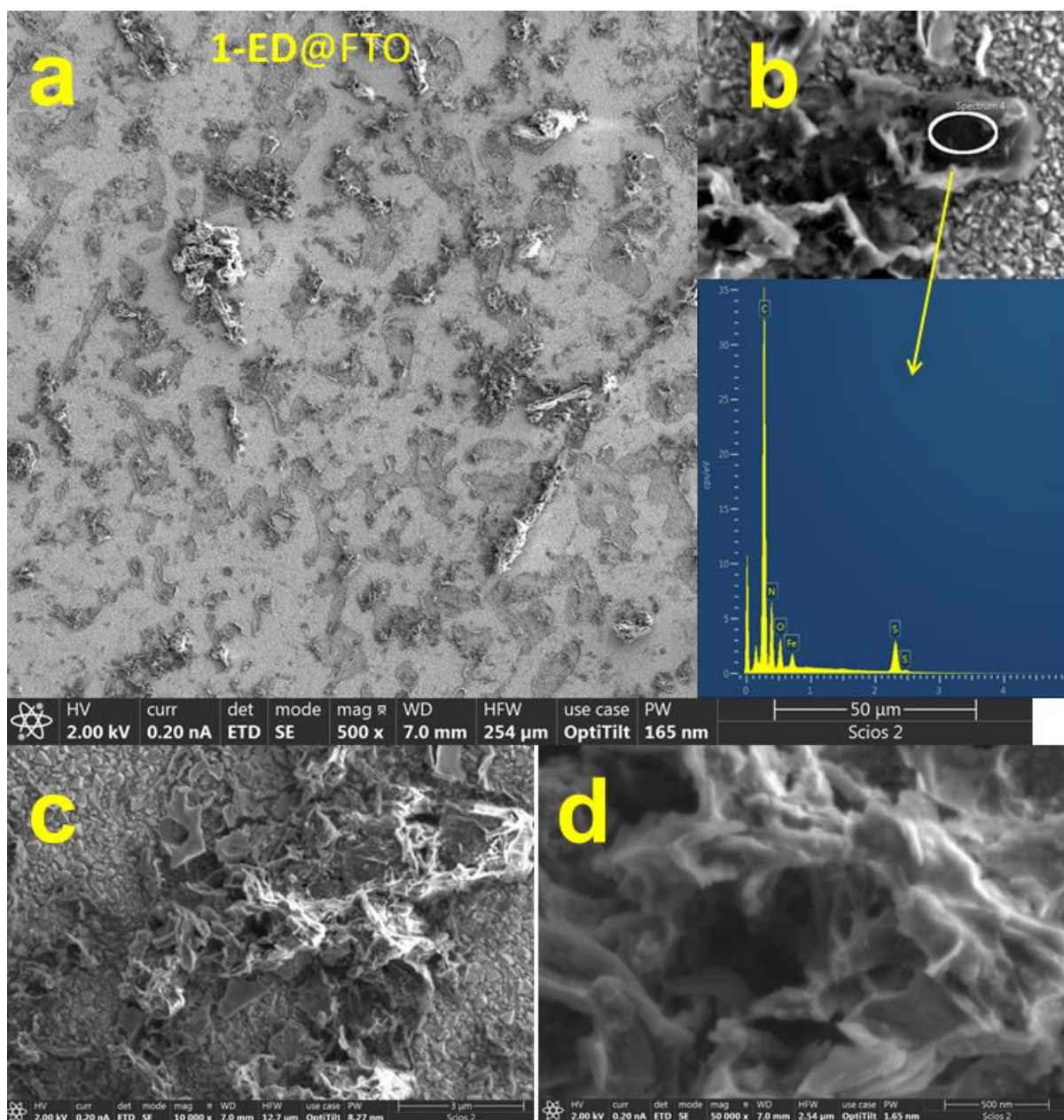
<b>Figure S1.</b> (a) CV scans of 1 (0.4 mM) in DCM with added H <sub>2</sub> O (3 mmol in 0.5 mL acetone) on a BDD electrode (0.071 cm <sup>2</sup> ); (b) CV scans of 2 (0.4 mM) under the same conditions. Settings: under Ar, $\nu$ = 100 mV/s, Pt, and Ag <sup>+</sup> /Ag (0.01 M AgNO <sub>3</sub> , 0.1 M TBAP/acetonitrile), as counter, and reference electrodes, respectively. Red curves: 20 cycles in a broader potential range in both cases show that the anodic oxidation above +1.2 V <i>vs.</i> Fc <sup>+</sup> /Fc is required for electrodeposition (compare to the blue CVs, 10 cycles, in a narrower potential range). The green CV was recorded in DCM (10 mL) with added H <sub>2</sub> O (3 mmol in 0.5 mL acetone) on a BDD electrode (0.071 cm <sup>2</sup> ) for comparison. ....	2
<b>Figure S2.</b> Comparison of two parallel electrodeposition experiments using complex 1 (0.8 mM) on ITO (1.5 cm <sup>2</sup> ) in DCM with added water (3 mmol in 0.5 mL acetone) illustrating good reproducibility. Settings: under Ar, $\nu$ =100 mV/s, 20 cycles, Pt, and Ag <sup>+</sup> /Ag (0.01 M AgNO <sub>3</sub> , 0.1 M TBAP/acetonitrile), as counter, and reference electrodes, respectively. See the analogous experiments on FTO in Fig. 3c for comparison. ....	3
<b>Figure S3.</b> (a) SEM image of 1-ED@FTO as-prepared and cleansed with MilliQ water to remove salt residues, (b) EDX spectrum of the area within the white circle; (c-d) SEM images at different magnifications (see the footers for experimental settings). ....	4
<b>Figure S4.</b> (a) SEM image of 2-ED@FTO as-prepared and cleansed with MilliQ water to remove salt residues, (b) EDX spectrum of the area within the white circle; (c-d) SEM images at different magnifications (see the footers for experimental settings). ....	5
<b>Figure S5.</b> (a) SEM images at different magnifications and EDX spectrum of 1-ED@ITO as-prepared and cleansed with MilliQ water to remove salt residues, (b) SEM images at different magnifications and EDX spectrum of 2-ED@ITO as-prepared (see the footers for experimental settings). Insets on the top: CA currents at +1.5 V <i>vs.</i> AgCl/Ag by using these electrodes. ....	6
<b>Figure S6.</b> (a) SEM images and EDX spectrum of the as-prepared 1-DIP-Nf@ITO sample and (b) the same sample after the electrochemical investigations (for details of the follow-up electrochemistry see Fig. 4a-c). The SEM parameters are found in the footers above. ....	7



**Figure S1.** (a) CV scans of **1** (0.4 mM) in DCM with added H<sub>2</sub>O (3 mmol in 0.5 mL acetone) on a BDD electrode (0.071 cm<sup>2</sup>); (b) CV scans of **2** (0.4 mM) under the same conditions. Settings: under Ar,  $\nu = 100$  mV/s, Pt, and Ag<sup>+</sup>/Ag (0.01 M AgNO<sub>3</sub>, 0.1 M TBAP/acetonitrile), as counter, and reference electrodes, respectively. Red curves: 20 cycles in a broader potential range in both cases show that the anodic oxidation above +1.2 V *vs.* Fc<sup>+</sup>/Fc is required for electrodeposition (compare to the blue CVs, 10 cycles, in a narrower potential range). The green CV was recorded in DCM (10 mL) with added H<sub>2</sub>O (3 mmol in 0.5 mL acetone) on a BDD electrode (0.071 cm<sup>2</sup>) for comparison.

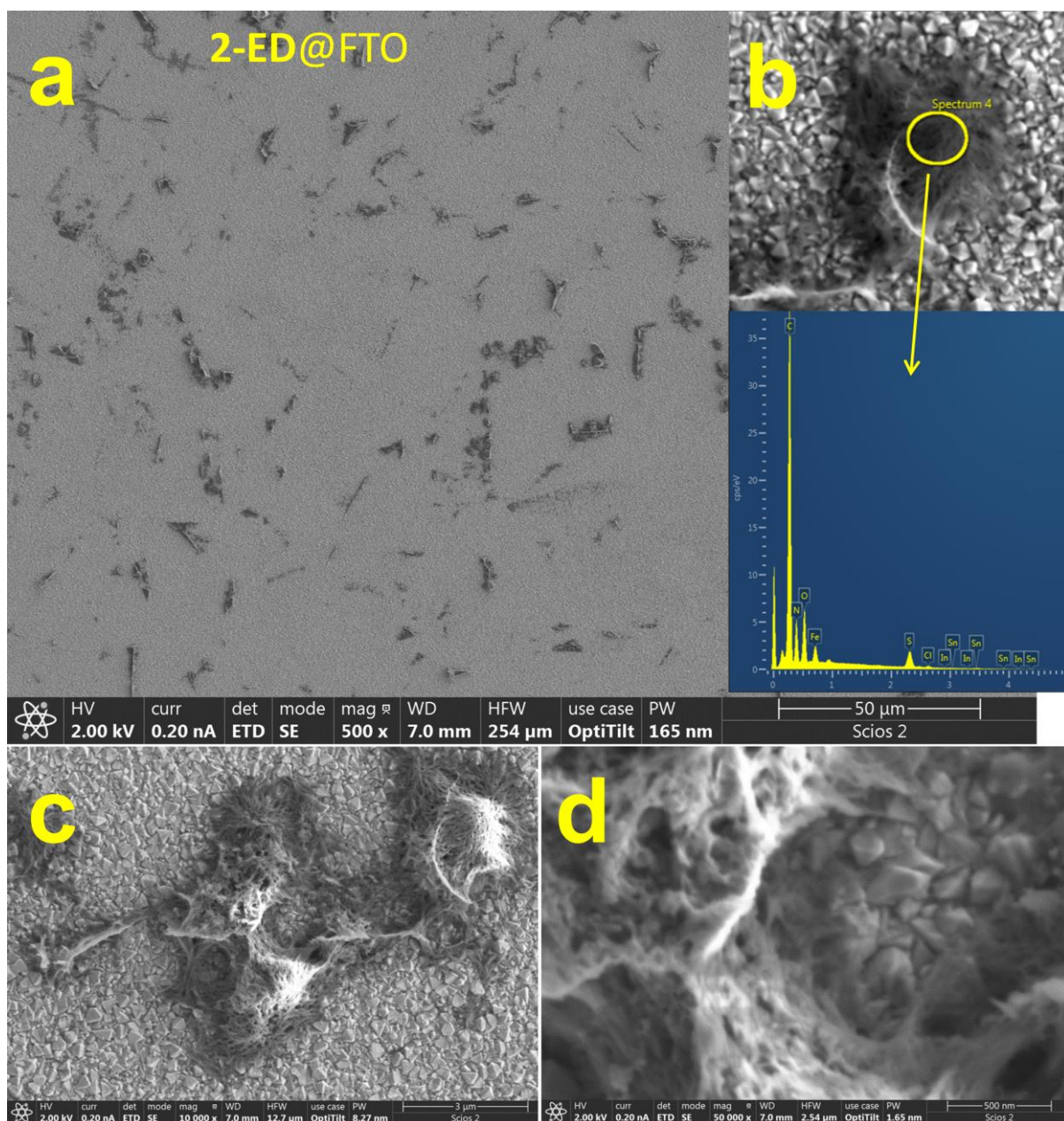


**Figure S2.** Comparison of two parallel electrodeposition experiments using complex **1** (0.8 mM) on ITO (1.5 cm<sup>2</sup>) in DCM with added water (3 mmol in 0.5 mL acetone) illustrating good reproducibility. Settings: under Ar,  $\nu=100$  mV/s, 20 cycles, Pt, and Ag<sup>+</sup>/Ag (0.01 M AgNO<sub>3</sub>, 0.1 M TBAP/acetonitrile), as counter, and reference electrodes, respectively. See the analogous experiments on FTO in Fig. 3c for comparison.

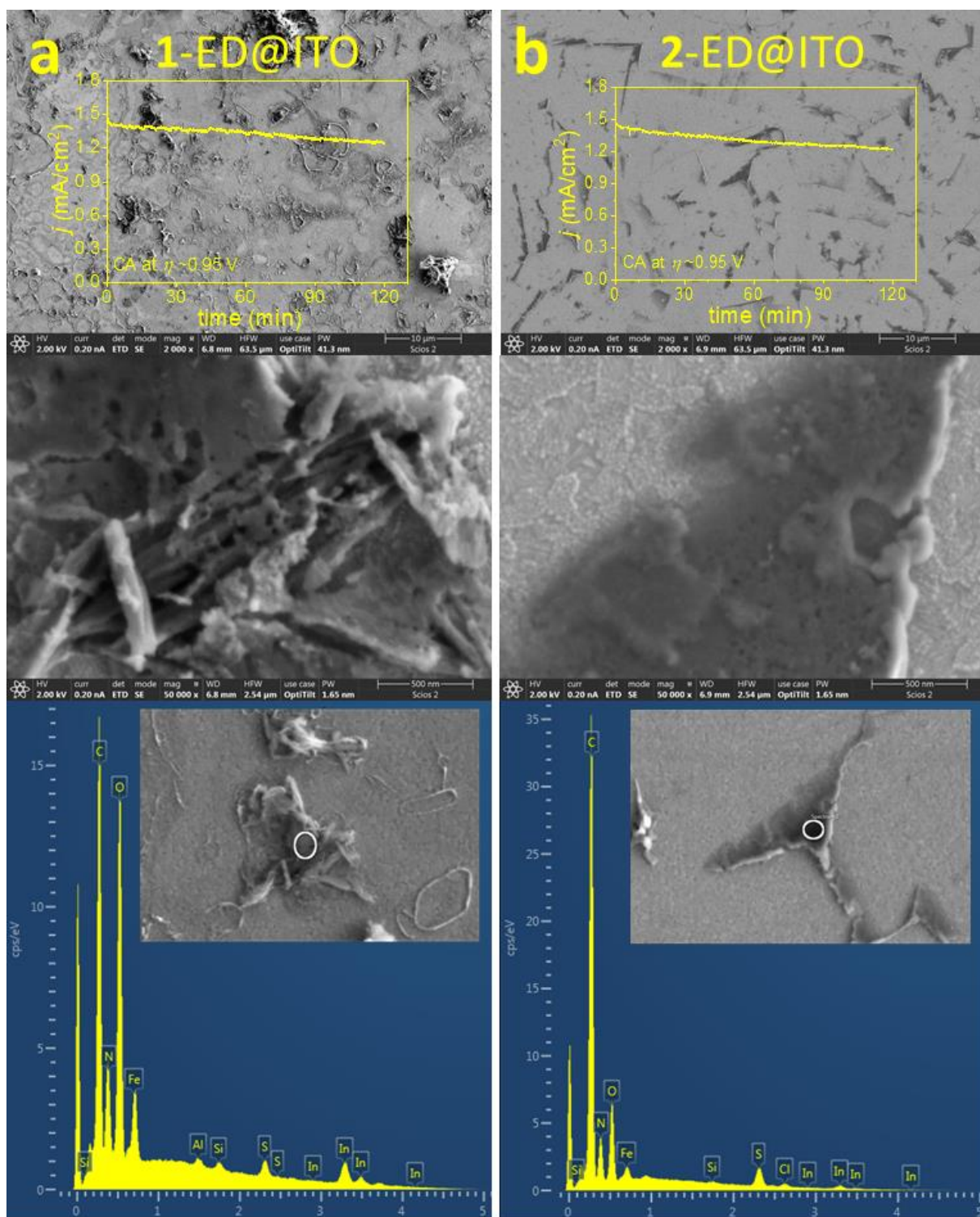


**Figure S3.** (a) SEM image of 1-ED@FTO as-prepared and cleansed with MilliQ water to remove salt residues, (b) EDX spectrum of the area within the white circle; (c-d) SEM images at different magnifications (see the footers for experimental settings).



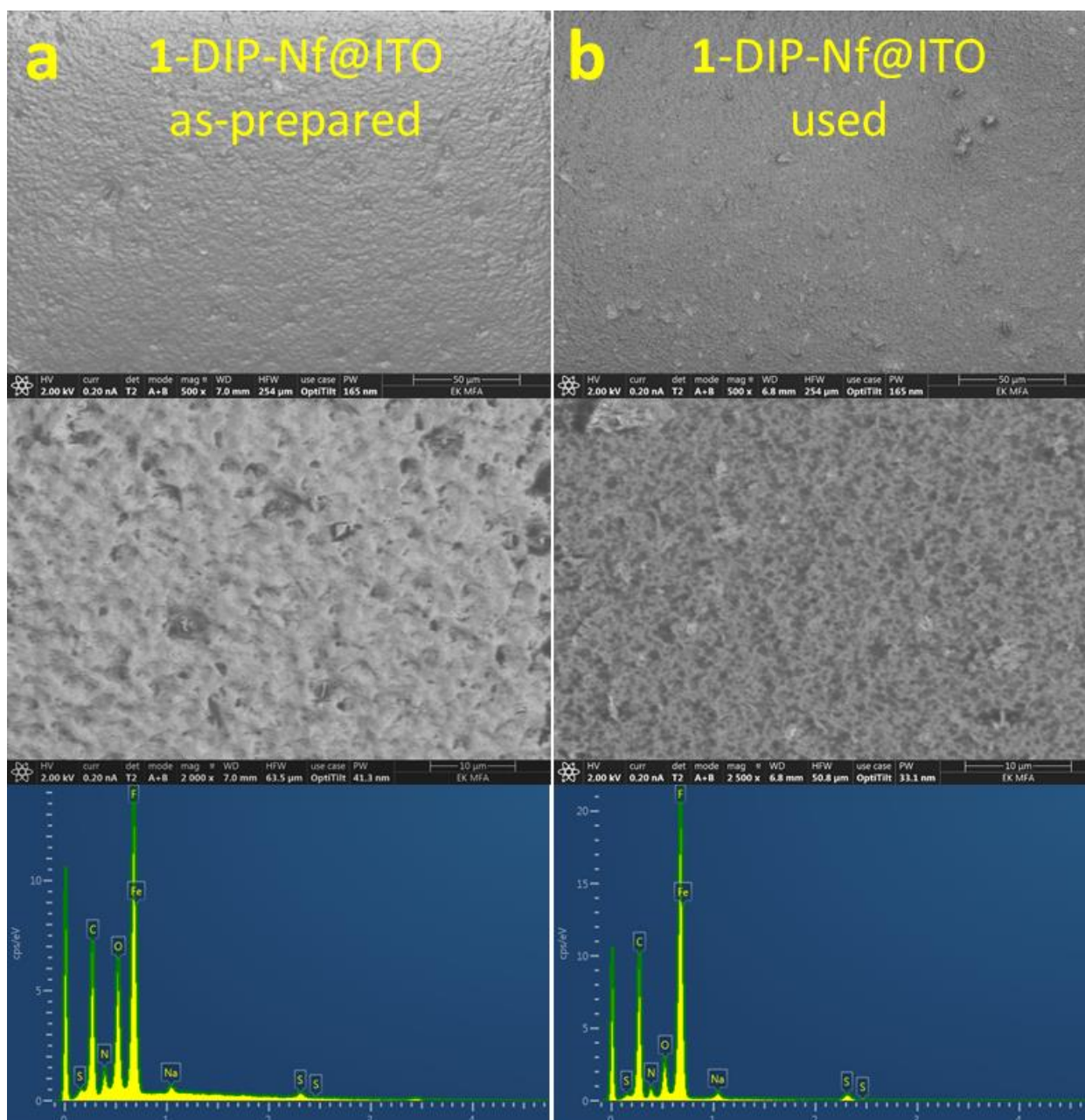


**Figure S4.** (a) SEM image of 2-ED@FTO as-prepared and cleansed with MilliQ water to remove salt residues, (b) EDX spectrum of the area within the white circle; (c-d) SEM images at different magnifications (see the footers for experimental settings).



**Figure S5.** (a) SEM images at different magnifications and EDX spectrum of **1-ED@ITO** as-prepared and cleansed with MilliQ water to remove salt residues, (b) SEM images at different magnifications and EDX spectrum of **2-ED@ITO** as-prepared (see the footers for experimental settings). Insets on the top: CA currents at +1.5 V *vs.* AgCl/Ag by using these electrodes.





**Figure S6.** (a) SEM images and EDX spectrum of the as-prepared 1-DIP-Nf@ITO sample and (b) the same sample after the electrochemical investigations (for details of the follow-up electrochemistry see Fig. 4a-c). The SEM parameters are found in the footers above.