

Supplementary file

For

**Photocatalytic Treatment of Wastewater Containing Simultaneous Organic
and Inorganic Pollution: Competition and Operating Parameters Effects**

Ahmed Amine Azzaz^{1,2}, Salah Jellali³, Nasser Ben Harharah Hamed⁴, Atef El Jery⁴, Lotfi Khezami⁵,
Aymen Amin Assadi⁶ and Abdeltif Amrane^{6,*}

1 Environnements dynamiques et territoires de la Montagne, Université Savoie Mont-Blanc, EDYTEM, 5 Boulevard de la
Mer Caspienne, 73370 Le Bourget-du-Lac, France ; ahmed-amine.azzaz@univ-smb.fr;

2 Water Research and Technologies Center, Wastewater Treatment Laboratory, University of Carthage, P.O. Box 273,
Soliman 8020, Tunisia;

3 PEIE Research Chair for the Development of Industrial Estates and Free Zones, Center for Environmental Studies and
Research, Sultan Qaboos University, Al-Khoud 123, Oman; s.jellali@squ.edu.om;

4 Department of Chemical Engineering, College of Engineering, King Khalid University, Abha 61411, Saudi Arabia;
hharharah@kku.edu.sa (B.H.H.N.); ajery@kku.edu.sa (E.J.A.);

5 Department of Chemistry, College of Sciences, Imam Mohammad Ibn Saud Islamic University, P.O. Box 5701, Riyadh
11432, Saudi Arabia; lkhezami@gmail.com ;

6 Univ Rennes, École Nationale Supérieure de Chimie de Rennes, CNRS, ISCR (Institut des Sciences Chimiques de
Rennes) – UMR 6226, F-35000 Rennes, France; aymen.assadi@ensc-rennes.fr ;

* Correspondence: abdelatif.amrane@univ-rennes1.fr ; Tel.: +33-(0)-2-23-23-40-00

Catalysts – MDPI

1 Tables and 2 Figures

Figure S1. The photocatalytic set-ups during this study

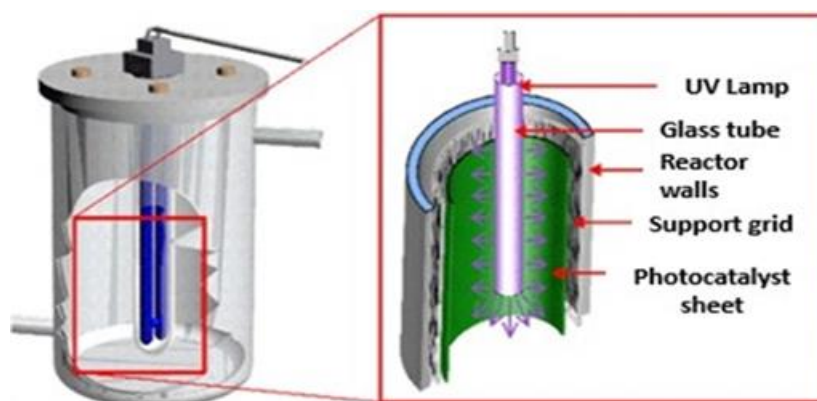


Figure S2. SEM/EDX analysis of the TiO₂ catalyst sample

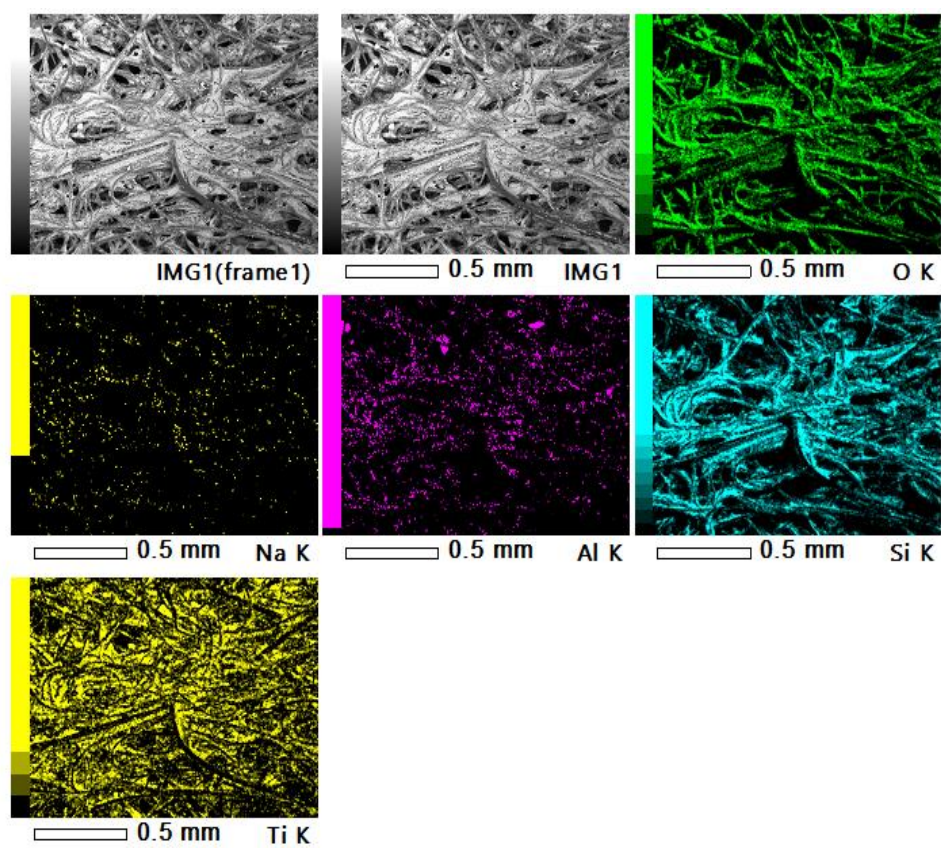


Table S1. Used kinetic models and their linear forms

Model	Equation	Linear Form
Pseudo-first-order	$\frac{dQ_t}{dt} = k_1(Q_e - Q_t)$	$Ln(Q_e - Q_t) = LnQ_{el} - k_1t$
Pseudo-second-order	$\frac{dQ_t}{dt} = k_2(Q_e - Q_t)^2$	$\frac{t}{Q_t} = \frac{1}{k_2Q_e^2} + \frac{1}{Q_{el}}t$