

## SUPPLEMENTARY MATERIAL

### **Ag-Mn<sub>x</sub>O<sub>y</sub> on Graphene Oxide Derivatives as Oxygen Reduction Reaction Catalyst in Alkaline Direct Ethanol Fuel Cells**

*Sigrid Wolf<sup>fl,\*</sup>, Michaela Roschger<sup>1</sup>, Boštjan Genorio<sup>2</sup>, Mitja Kolar<sup>2</sup>, Daniel Garstenauer<sup>1</sup>, Brigitte Bitschnau<sup>3</sup>, Viktor Hacker<sup>1</sup>*

*<sup>1</sup> Institute of Chemical Engineering and Environmental Technology, Graz University of Technology, Inffeldgasse 25/C, 8010 Graz, Austria*

*<sup>2</sup> Faculty of Chemistry and Chemical Technology, University of Ljubljana, Večna pot 113, 1000 Ljubljana, Slovenia*

*<sup>3</sup> Institute of Physical and Theoretical Chemistry, Graz University of Technology, Stremayrgasse 9, 8010 Graz, Austria*

#### **\* Corresponding author:**

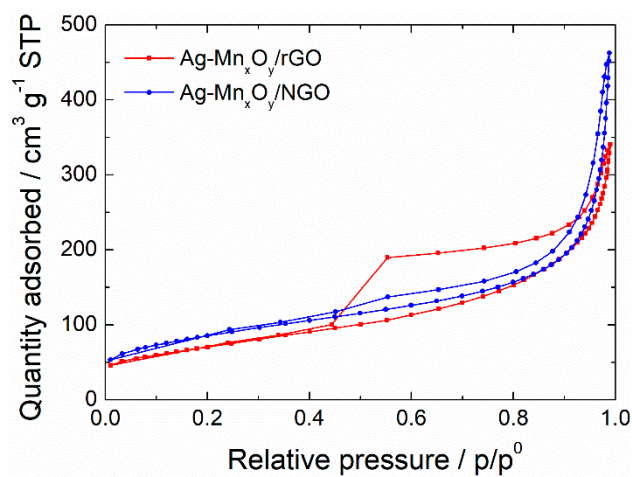
Dipl.-Ing. Sigrid Wolf, BSc.

Graz University of Technology, Institute of Chemical Engineering and  
Environmental Technology

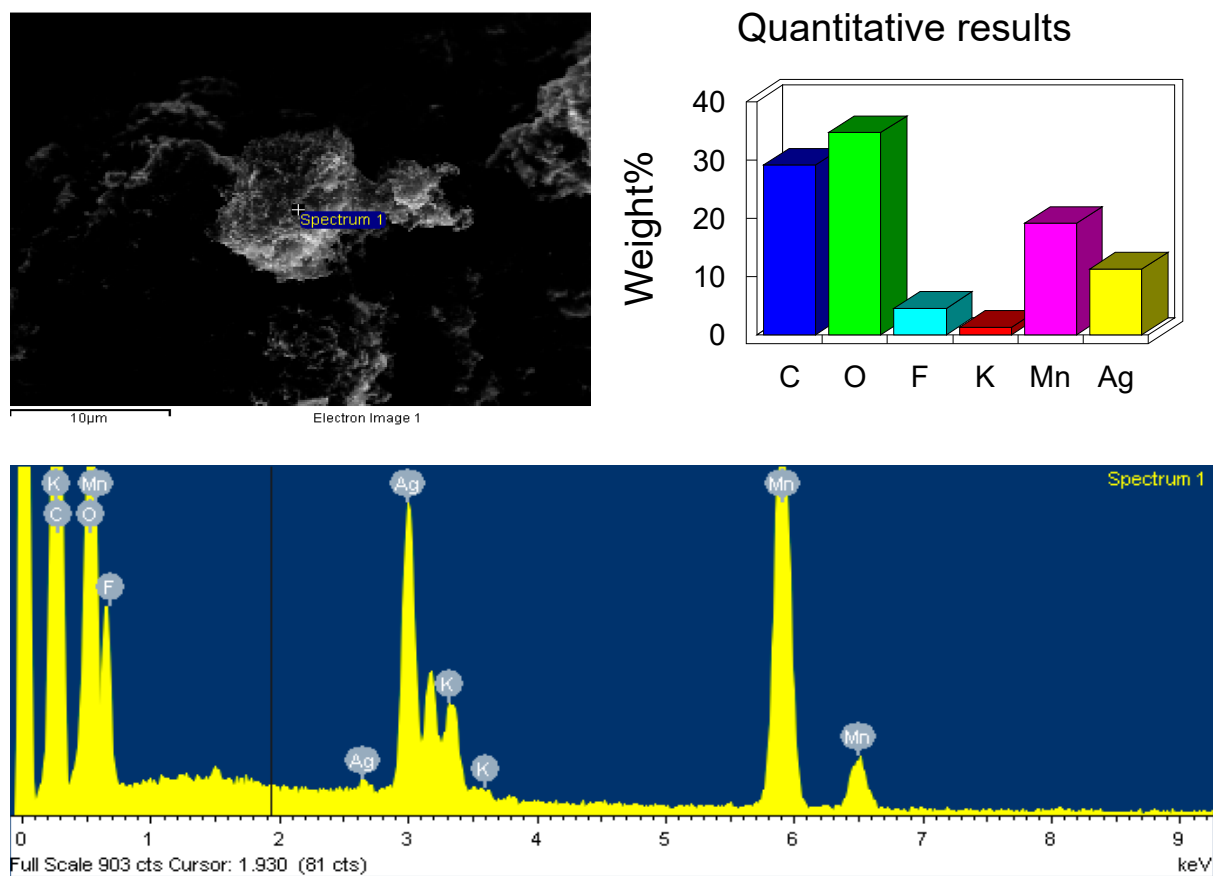
Inffeldgasse 25/C, AUT-8010 Graz, Austria

Tel.: +43316 873 7979

E-mail: sigrid.wolf@tugraz.at



**Figure S1.** Adsorption/desorption isotherms of Ag-Mn<sub>x</sub>O<sub>y</sub>/rGO and Ag-Mn<sub>x</sub>O<sub>y</sub>/NGO.



**Figure S2.** EDX results of Ag-Mn<sub>x</sub>O<sub>y</sub>/rGO.

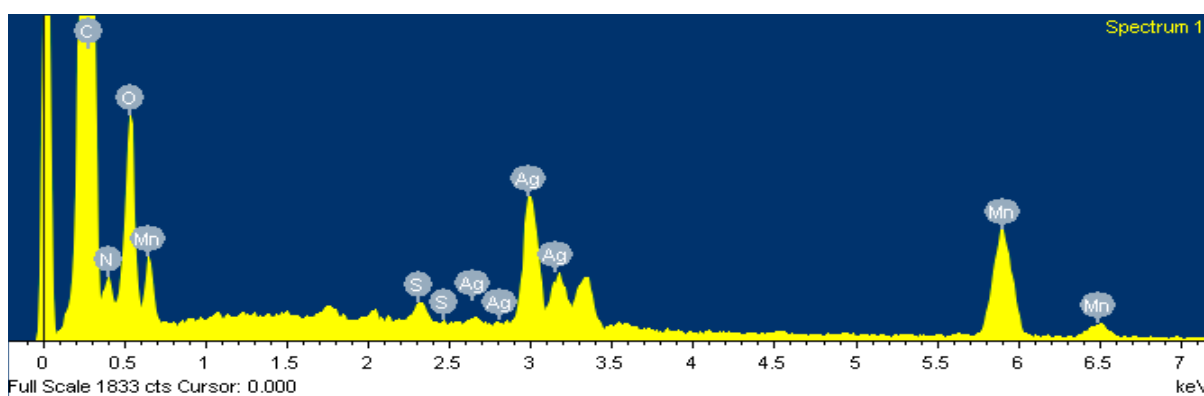
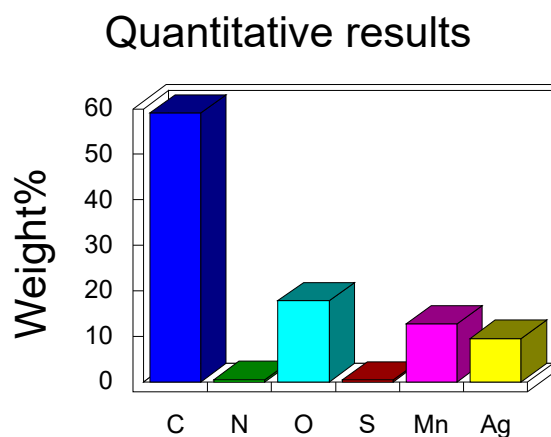
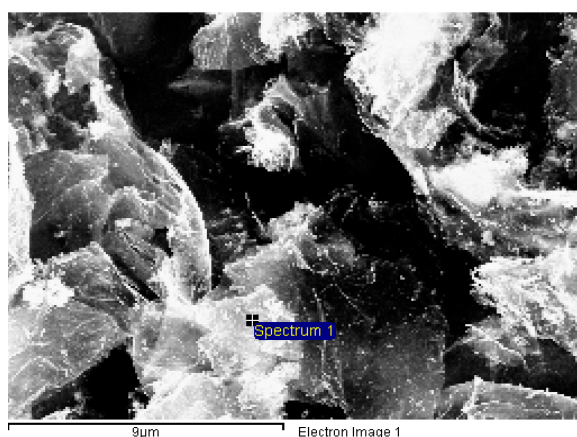
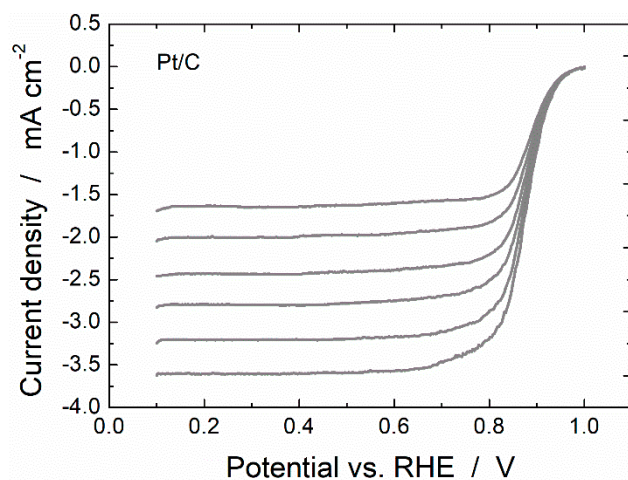


Figure S3. EDX results of Ag-Mn<sub>x</sub>O<sub>y</sub>/NGO.

Table S1. ICP-MS results of the Ag-Mn<sub>x</sub>O<sub>y</sub>/C catalysts.

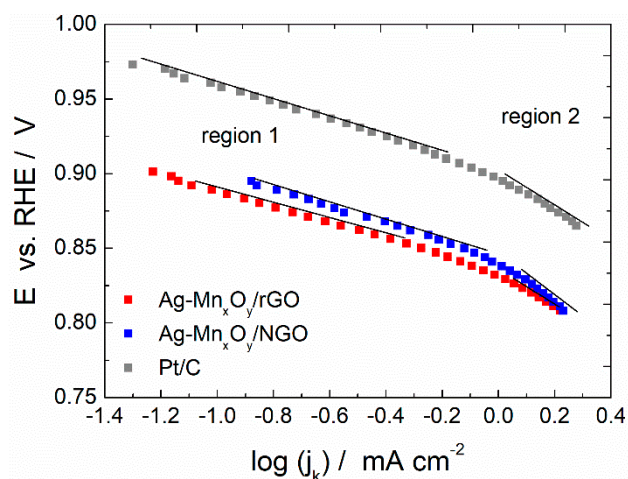
Catalysts	Mn (wt%)	Ag (wt%)	K (wt%)	Cu (ppm)	Ni (ppm)	Fe (ppm)	Al (ppm)	Cr (ppm)	Ti (ppm)	Co (ppm)	Mg (ppm)
Ag-Mn <sub>x</sub> O <sub>y</sub> /rGO	13.81	9.51	0.89	6.70	<2.4	<2.4	98.4	<2.4	<2.4	<2.4	44.9
Ag-Mn <sub>x</sub> O <sub>y</sub> /NGO	11.64	9.05	0.40	11700	11500	6600	1783	1583	267	261	125
	Ca (ppm)	Zn (ppm)	V (ppm)	Mo (ppm)	Ba (ppm)	Se (ppm)	Pb (ppm)	Sr (ppm)	Cd (ppm)	As (ppm)	
Ag-Mn <sub>x</sub> O <sub>y</sub> /rGO	35.8	15.9	<2.4	<2.4	6.13	<2.4	<2.4	<2.4	<2.4	<2.4	
Ag-Mn <sub>x</sub> O <sub>y</sub> /NGO	105	76.6	24.9	23.8	5.39	20.1	13.0	4.65	3.61	3.47	



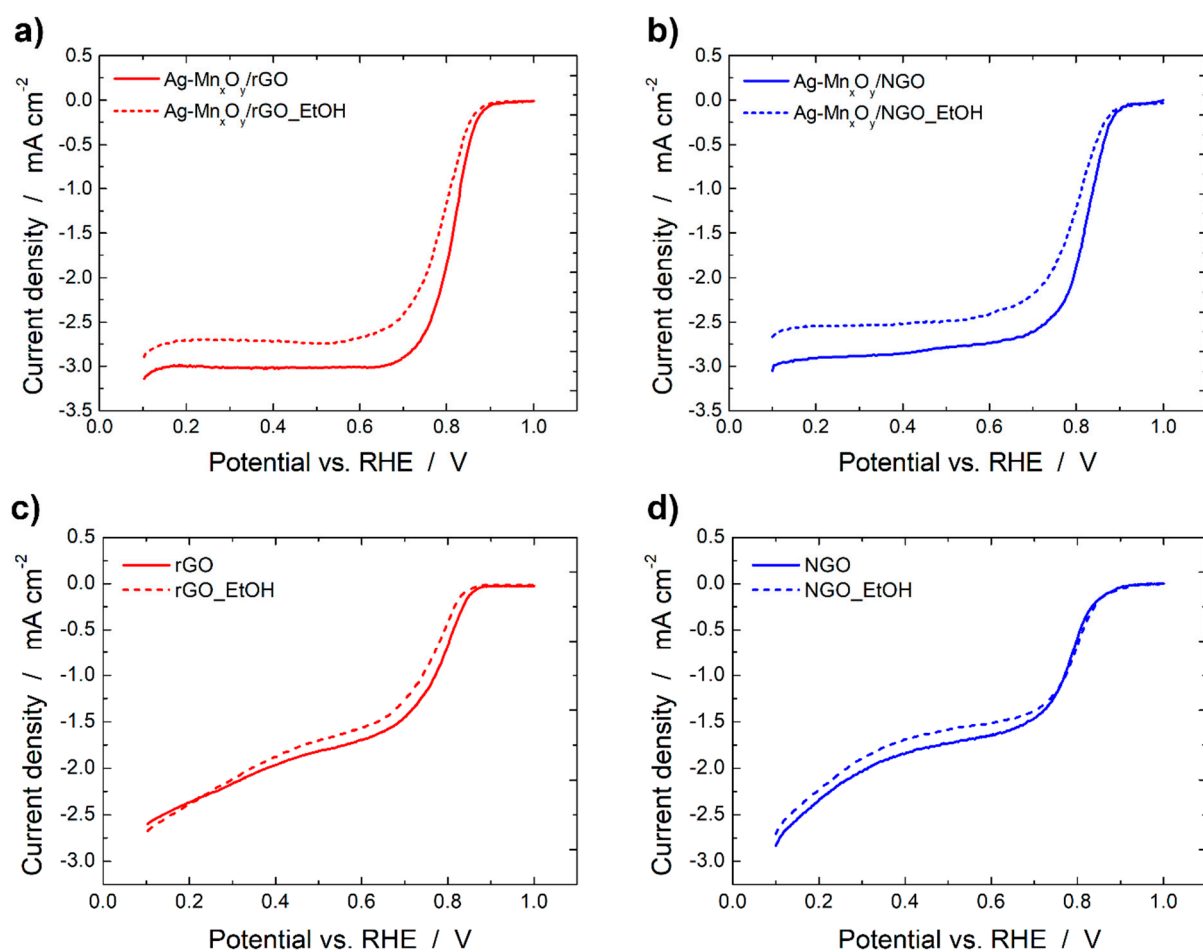
**Figure S4.** Potentiodynamic ORR curves of comm. Pt/C in O<sub>2</sub> saturated 1 M KOH at 10 mV s<sup>-1</sup> at different rotation rates.

**Table S2.** Limiting current density of the graphene derivatives, Ag-Mn<sub>x</sub>O<sub>y</sub>/C composites and Pt/C catalysts without/with EtOH at different rpm.

Catalysts	400 rpm / mA cm <sup>-2</sup>	600 rpm / mA cm <sup>-2</sup>	900 rpm / mA cm <sup>-2</sup>	1200 rpm / mA cm <sup>-2</sup>	1600 rpm / mA cm <sup>-2</sup>	2000 rpm / mA cm <sup>-2</sup>
rGO	-1.05/ -1.02	-1.24/ -1.21	-1.49/ -1.45	-1.70/ -1.65	-1.96/ -1.88	-2.17/ -2.05
NGO	-0.99/ -0.91	-1.17/ -1.09	-1.42/ -1.30	-1.60/ -1.48	-1.84/ -1.69	-2.06/ -1.87
Ag-Mn <sub>x</sub> O <sub>y</sub> /rGO	-1.56/ -1.43	-1.88/ -1.71	-2.28/ -2.07	-2.63/ -2.37	-3.01/ -2.72	-3.41/ -3.04
Ag-Mn <sub>x</sub> O <sub>y</sub> /NGO	-1.51/ -1.35	-1.80/ -1.62	-2.18/ -1.94	-2.49/ -2.21	-2.85/ -2.52	-3.18/ -2.80



**Figure S5.** Tafel Plot of Ag-Mn<sub>x</sub>O<sub>y</sub>/C composites and Pt/C derived from the ORR curves in O<sub>2</sub> saturated 1 M KOH at 10 mV s<sup>-1</sup> at different rotation rates.



**Figure S6.** Potentiodynamic ORR curves of Ag-Mn<sub>x</sub>O<sub>y</sub>/rGO (a) and Ag-Mn<sub>x</sub>O<sub>y</sub>/NGO (b) catalysts and blank support materials (c, d) in O<sub>2</sub> saturated 1 M KOH at 10 mV s<sup>-1</sup> at 1600 rpm with and without EtOH.