

Figure S1. FTIR Spectrum of Sugars Standards.

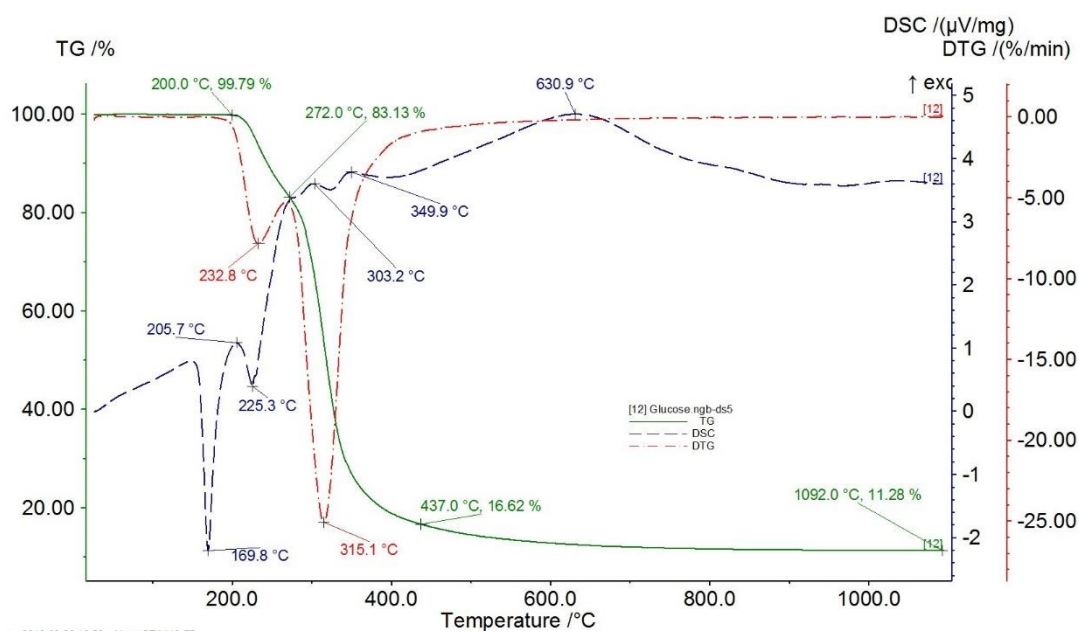


Figure S2. TG/DTG/DSC of glucose.

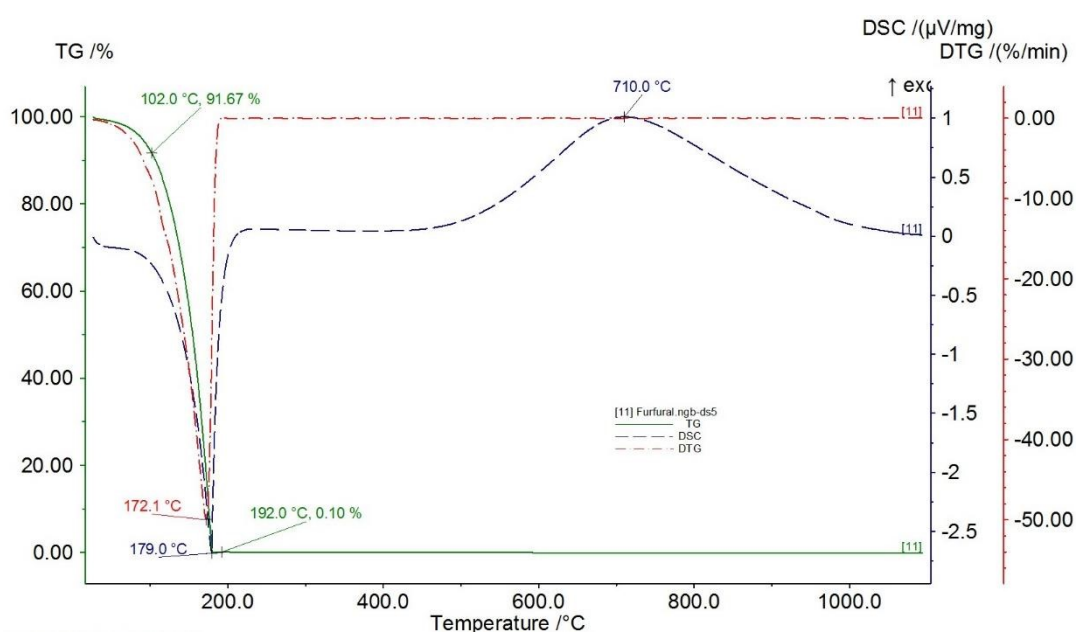


Figure S3. Curva de TG/DTG/DSC of furfural.

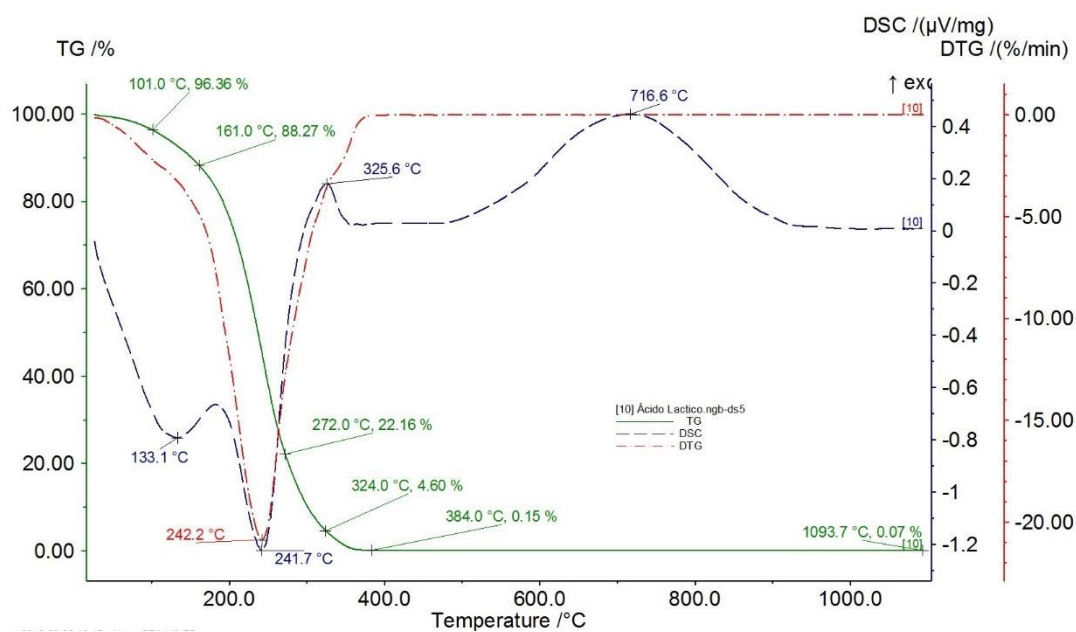


Figure S4. TG/DTG/DSC of lactic acid.

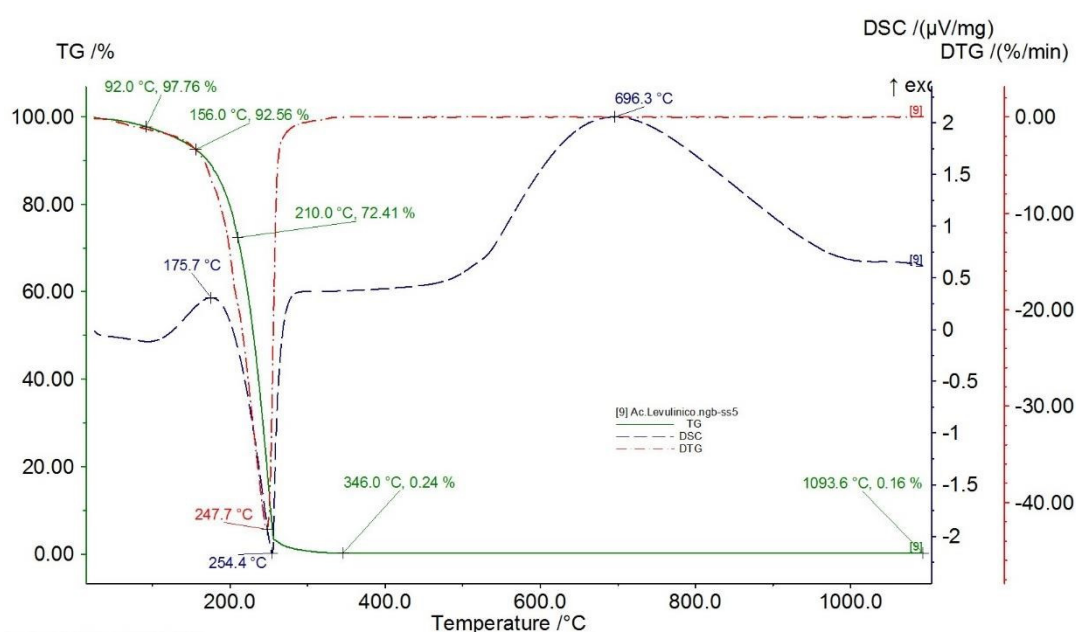


Figure S5. TG/DTG/DSC of Levulinic acid.

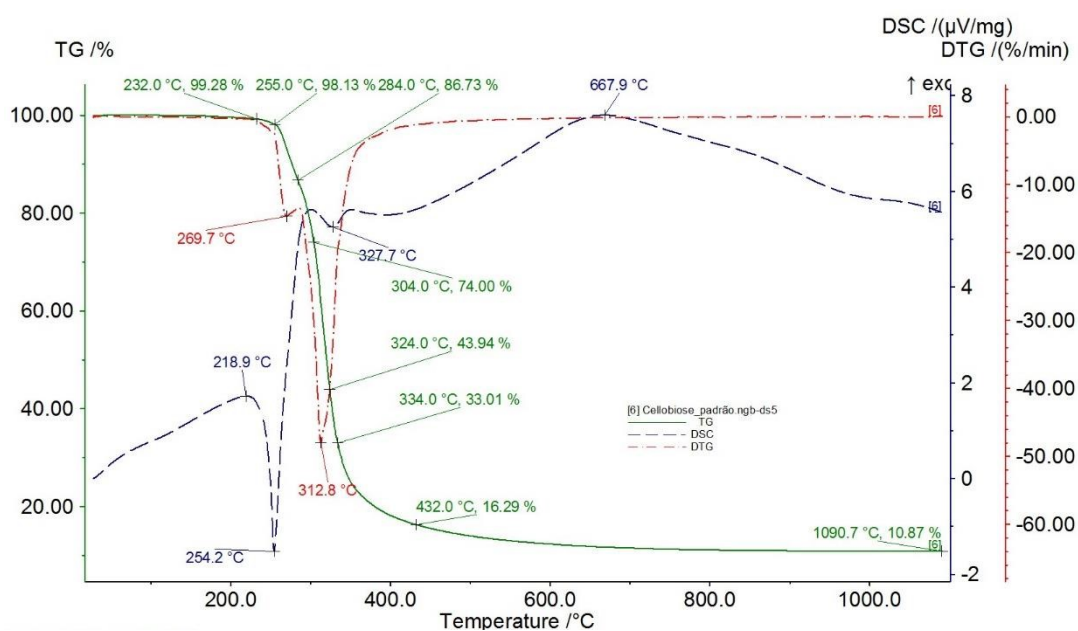


Figure S6. TG/DTG/DSC of cellobiose.

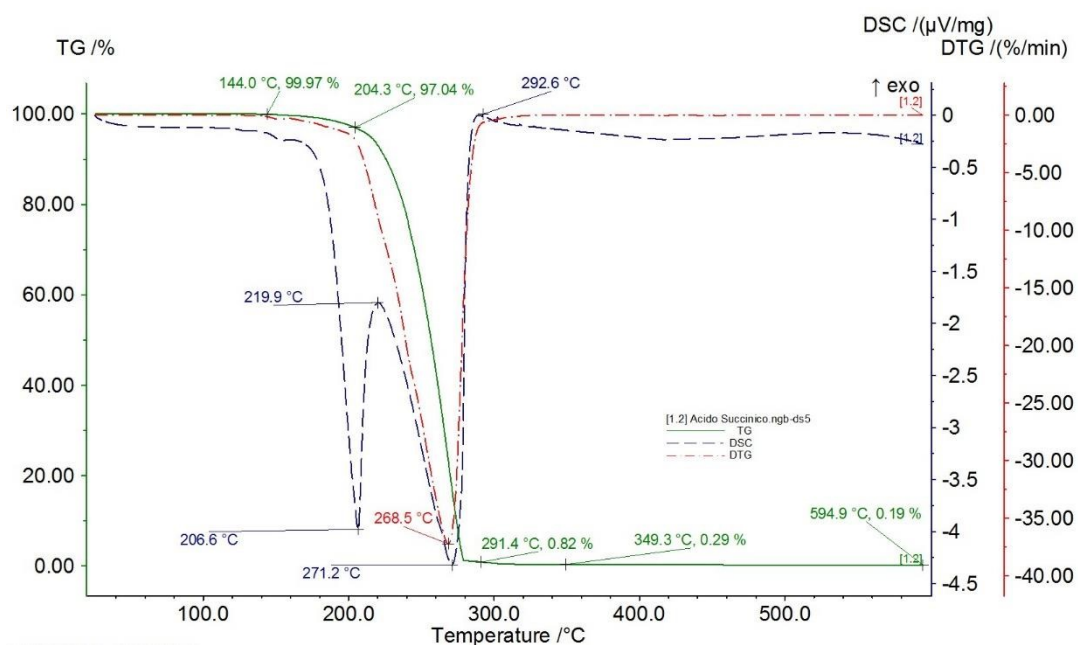


Figure S7. TG/DTG/DSC of Succinic Acid.

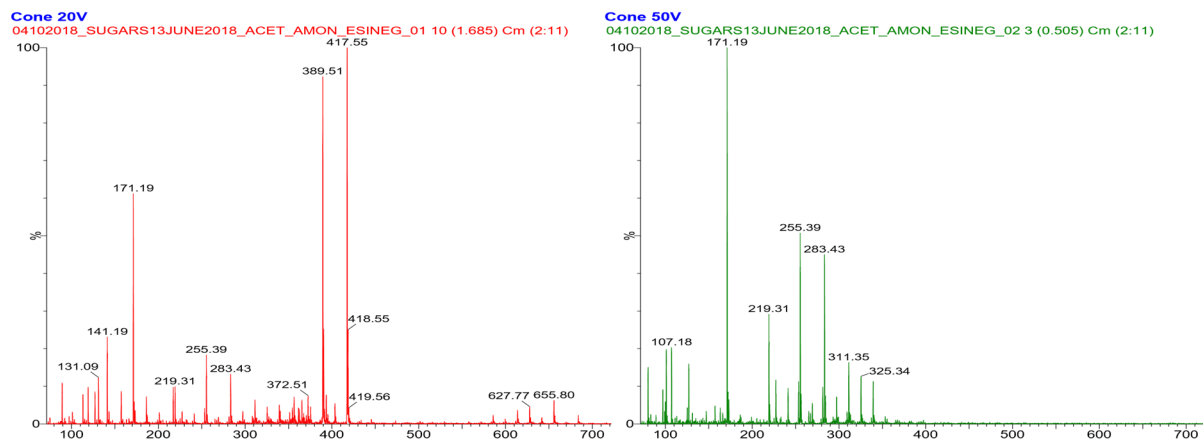


Figure S8. Mass spectrum of the sugar solution from the third reaction by direct infusion: cone 20V (left) and 50V (right).

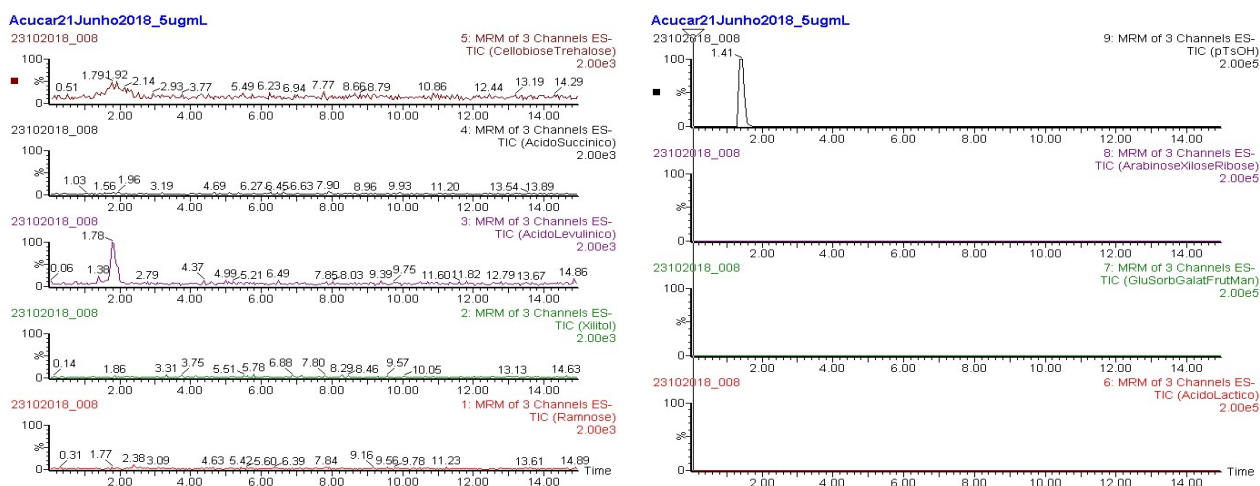


Figure S9. HPLC Chromatogram for all standards sugars (TIC - Total Ion Count).