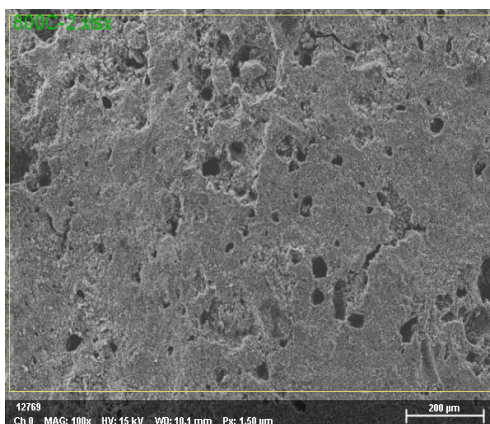
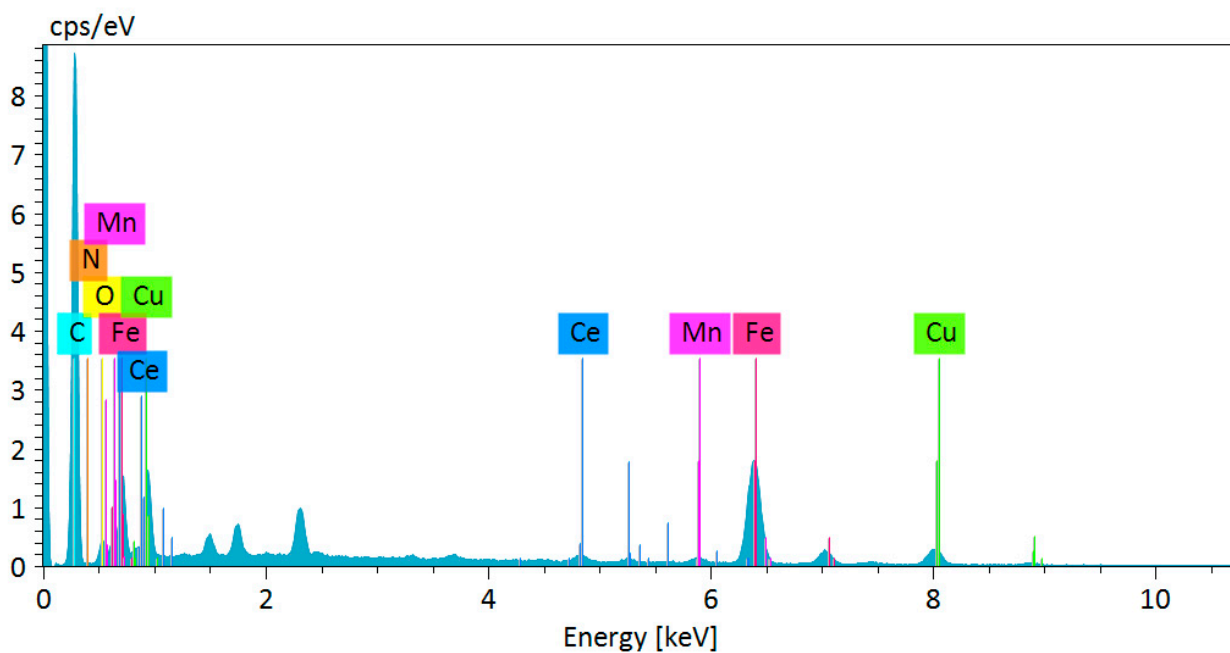


## Application Note

Company / Department



12769 Ch 0 MAG: 100x HV: 15 kV WD: 10.1 mm Pz: 1.50 μm  
 Name Date Time HV Mag WD  
 [kV] [mm]  
 12769 8/15/2023 10:40:29 15.0 keV 100x 10.1 mm

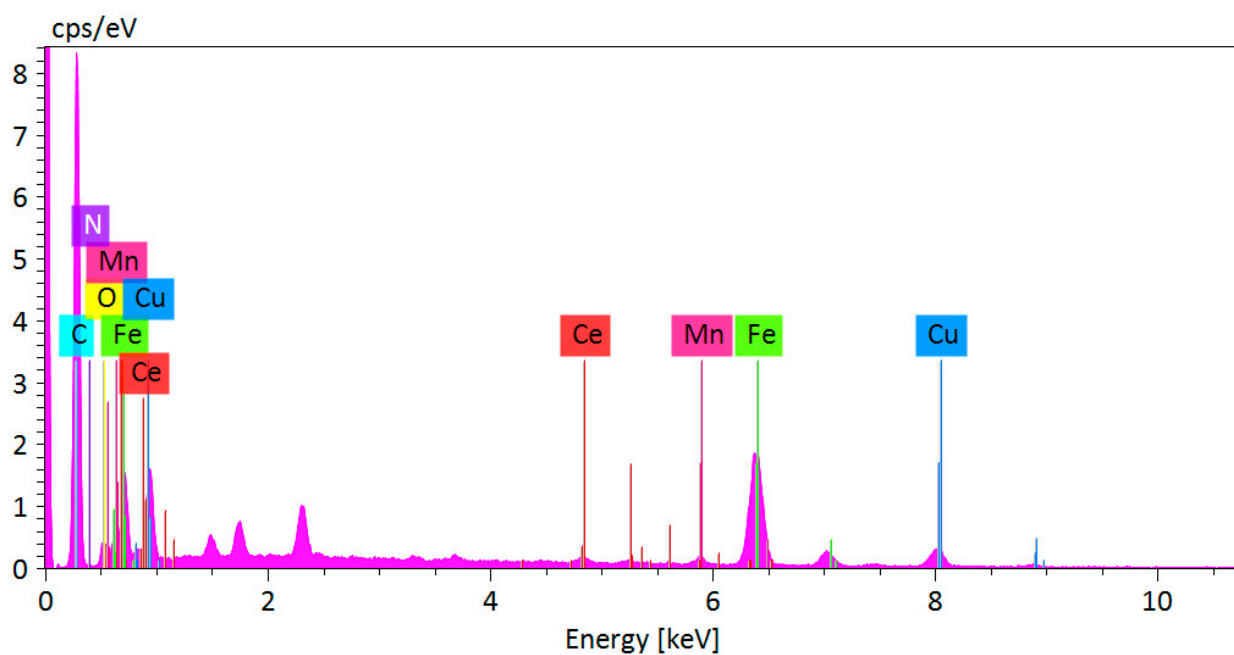
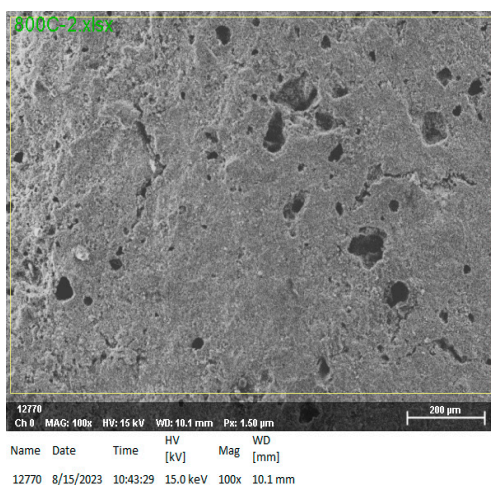


800C-2.xlsx

Element	At. No.	Netto	Mass [%]	Mass Norm. [%]	Atom [%]	abs. error [%] (3 sigma)
C	6	61282	40.689	51.814	81.987	14.254
N	7	227	0.472	0.601	0.815	0.593
O	8	2597	1.884	2.399	2.850	1.084
Mn	25	752	0.367	0.467	0.162	0.130
Fe	26	35497	23.468	29.884	10.170	2.176
Cu	29	6003	9.630	12.263	3.668	1.092
Ce	58	3466	2.019	2.571	0.349	0.286
		<b>Sum</b>	<b>78.529</b>	<b>100.000</b>	<b>100.000</b>	

# Application Note

Company / Department

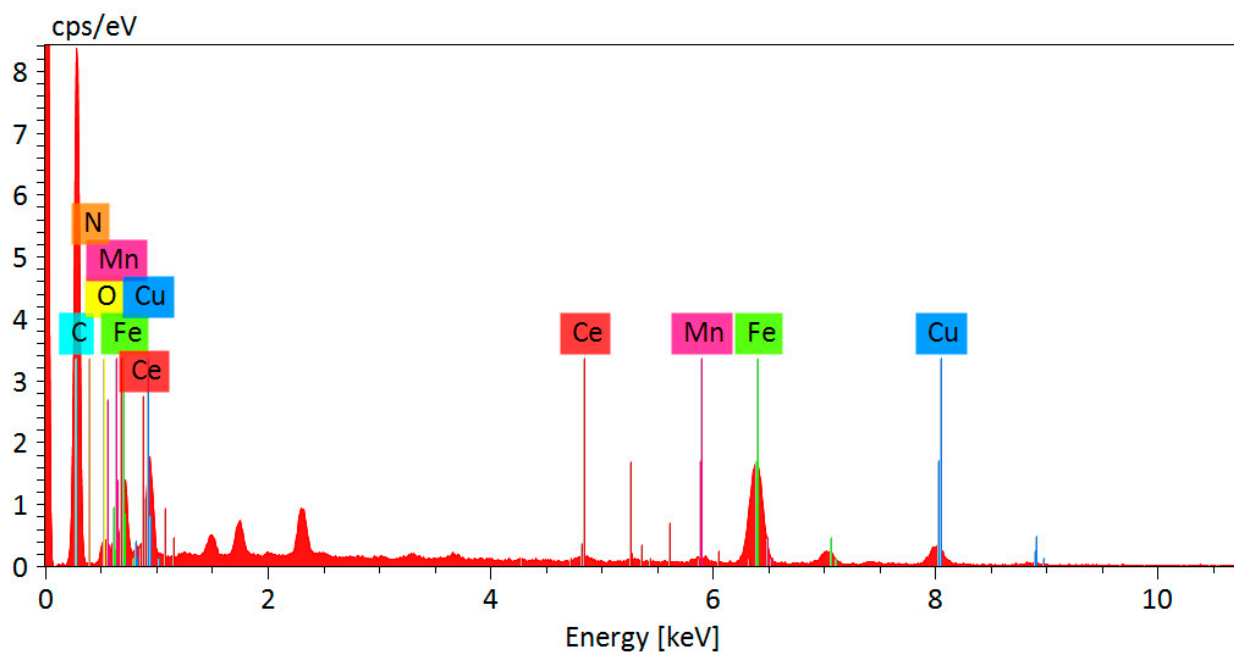
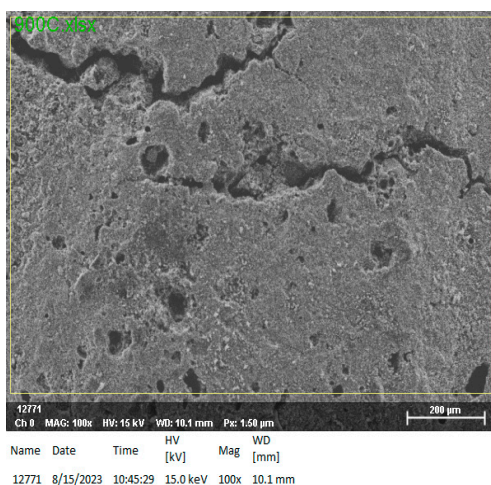


800C-2.xlsx

Element	At. No.	Netto	Mass [%]	Mass Norm. [%]	Atom [%]	abs. error [%] (3 sigma)
C	6	26919	38.246	50.217	81.098	14.346
N	7	99	0.426	0.559	0.774	0.716
O	8	1175	1.766	2.319	2.812	1.223
Mn	25	485	0.519	0.681	0.241	0.166
Fe	26	17281	24.478	32.139	11.163	2.319
Cu	29	2832	8.960	11.764	3.591	1.119
Ce	58	1464	1.767	2.321	0.321	0.295
		Sum	76.162	100.000	100.000	

# Application Note

Company / Department

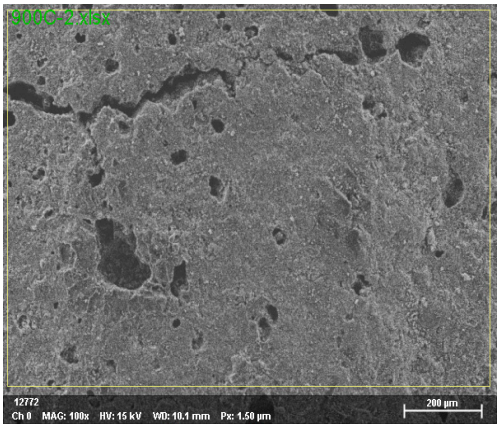


900C.xlsx

Element	At. No.	Netto	Mass [%]	Mass Norm. [%]	Atom [%]	abs. error [%] (3 sigma)
C	6	19856	43.528	51.349	81.447	16.840
N	7	79	0.543	0.640	0.871	0.969
O	8	926	2.207	2.604	3.100	1.608
Mn	25	364	0.556	0.656	0.227	0.183
Fe	26	11395	26.062	30.744	10.488	2.517
Cu	29	2167	10.154	11.978	3.591	1.316
Ce	58	1023	1.721	2.030	0.276	0.311
		<b>Sum</b>	<b>84.771</b>	<b>100.000</b>	<b>100.000</b>	

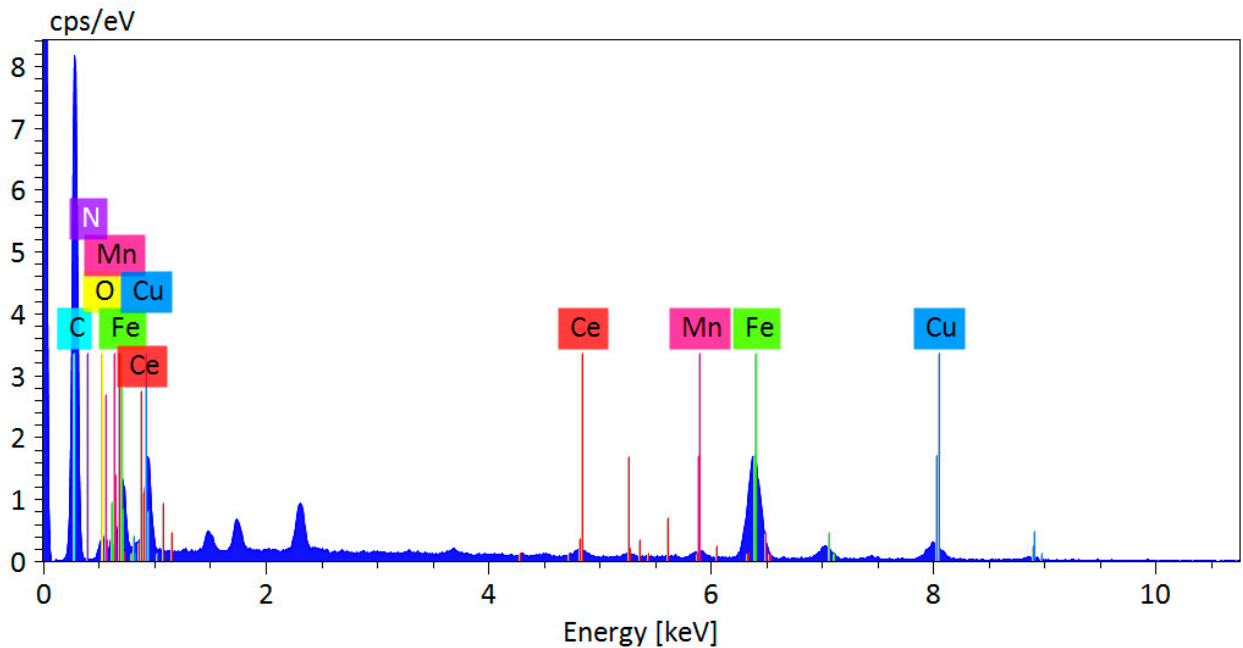
# Application Note

Company / Department



Name Date Time HV [kV] Mag WD [mm]

12772 8/15/2023 10:47:02 15.0 keV 100x 10.1 mm

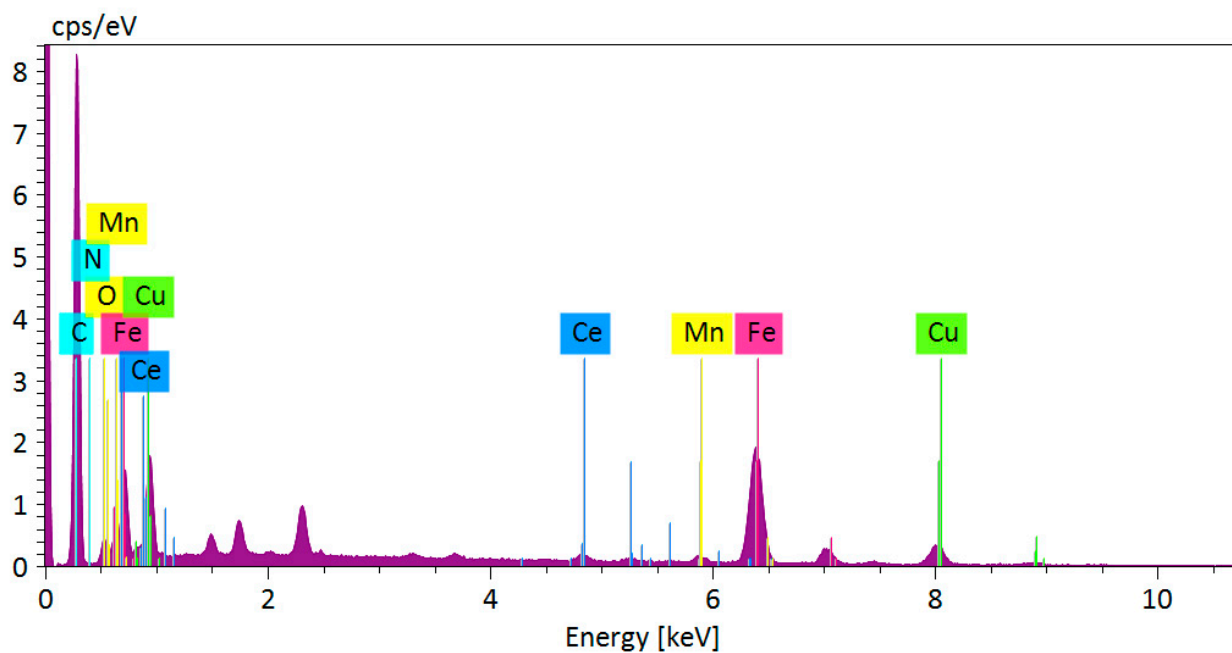
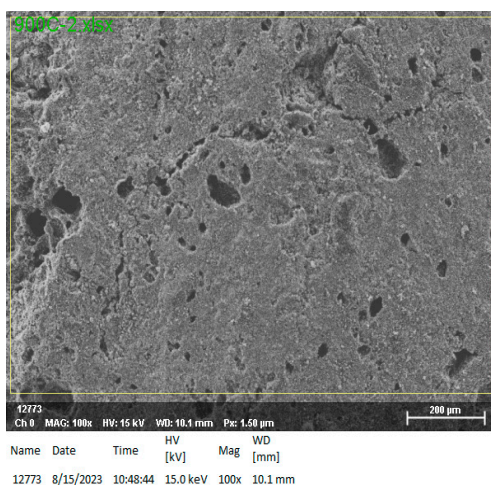


900C-2.xlsx

Element	At. No.	Netto	Mass [%]	Mass Norm. [%]	Atom [%]	abs. error [%] (3 sigma)
C	6	23791	43.254	51.676	82.184	16.416
N	7	66	0.375	0.448	0.610	0.740
O	8	869	1.707	2.039	2.435	1.282
Mn	25	482	0.611	0.730	0.254	0.182
Fe	26	13960	26.397	31.536	10.787	2.520
Cu	29	2446	9.581	11.447	3.441	1.220
Ce	58	1299	1.778	2.124	0.290	0.303
		Sum	83.703	100.000	100.000	

# Application Note

Company / Department



900C-2.xlsx

Element	At. No.	Netto	Mass [%]	Mass Norm. [%]	Atom [%]	abs. error [%] (3 sigma)
C	6	46116	38.180	49.814	81.283	13.663
N	7	154	0.374	0.488	0.683	0.550
O	8	1846	1.574	2.054	2.516	0.987
Mn	25	563	0.314	0.410	0.146	0.127
Fe	26	29786	22.916	29.898	10.492	2.136
Cu	29	5562	11.157	14.557	4.490	1.262
Ce	58	2783	2.130	2.779	0.389	0.306
		<b>Sum</b>	<b>76.646</b>	<b>100.000</b>	<b>100.000</b>	