

---

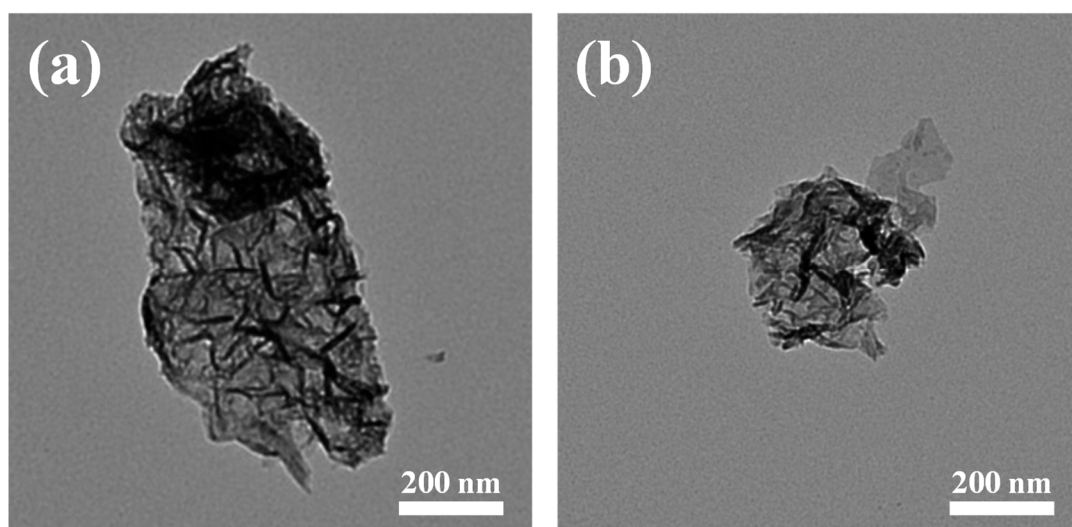
# Stably Improving the Catalytic Activity of Oxygen Evolution Reactions via Two-Dimensional Graphene Oxide-Incorporated NiFe-Layered Double Hydroxides

Ling Chen <sup>1</sup>, Yue Lu <sup>1</sup>, Manman Duanmu <sup>1</sup>, Xin Zhao <sup>1</sup>, Shenglu Song <sup>1</sup>, Liyue Duan <sup>1</sup>, Zhipeng Ma <sup>1,2</sup>, Ailing Song <sup>1,2,\*</sup> and Guangjie Shao <sup>1,2,\*</sup>

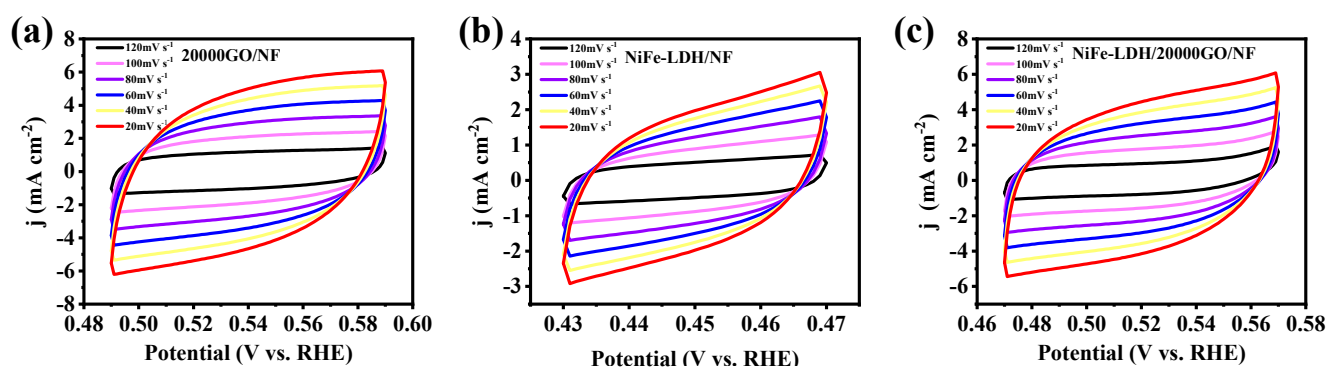
<sup>1</sup> Hebei Key Laboratory of Applied Chemistry, College of Environmental and Chemical Engineering, Yanshan University, Qinhuangdao 066004, China; hhchen@ysu.edu.cn (L.C.); yueluysu@stumail.ysu.edu.cn (Y.L.); manman.duanmu@stumail.ysu.edu.cn (M.D.); zhaoxin729914@163.com (X.Z.); slsong@stumail.ysu.edu.cn (S.S.); liyue.duan@stumail.ysu.edu.cn (L.D.); mazp@ysu.edu.cn (Z.M.)

<sup>2</sup> State Key Laboratory of Metastable Materials Science and Technology, Yanshan University, Qinhuangdao 066004, China

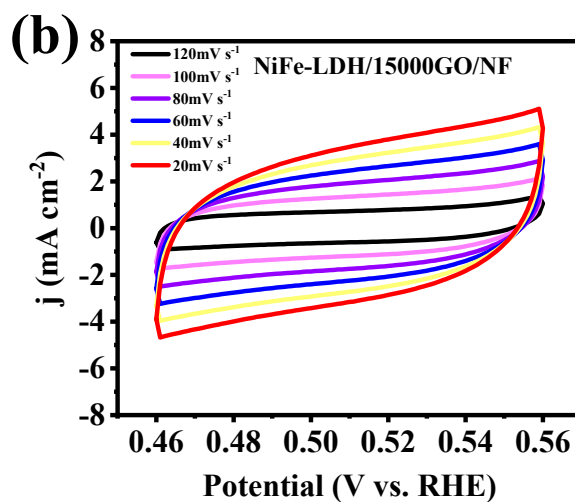
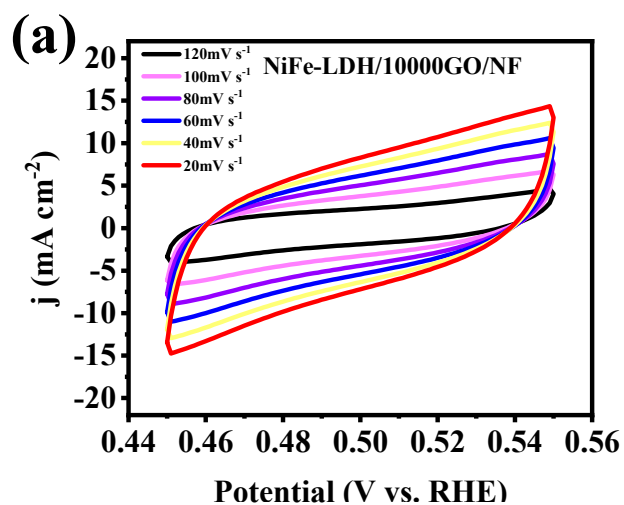
\* Correspondence: ailing.song@ysu.edu.cn (A.S.); shaoguangjie@ysu.edu.cn (G.S.)



**Figure S1.** (a) The TEM images of NiFe-LDH/10000GO/NF. (b) The TEM images of NiFe-LDH/15000GO/NF



**Figure S2.** CV curves of (a) 20000GO/NF, (b) NiFe-LDH/NF and (c) NiFe-LDH/20000GO/NF



**Figure S3.** CV curves of (a) NiFe-LDH/10000GO/NF and (b) NiFe-LDH/15000GO/NF