

Kinetics of Fischer-Tropsch Synthesis in a 3-D Printed Stainless Steel Microreactor Using Different Mesoporous Silica Supported Co-Ru Catalysts

Nafeezuddin Mohammad ¹, Sujoy Bepari ², Shyam Aravamudhan ¹ and Debasish Kuila ^{1,2,*}

¹ Department of Nanoengineering, Joint School of Nanoscience and Nanoengineering, North Carolina A&T State University, Greensboro, NC 27411, USA

² Department of Chemistry, North Carolina A&T State University, Greensboro, NC 27411, USA

* Correspondence: dkuila@ncat.edu; Tel.: +1-336-285-2243

Supporting Information

Supporting Figures

Figure S1. a) Low and b) High magnification SEM images for CoRu-MCM-41 c) EDX mapping for CoRu-MCM-41

Figure S2. Low magnification TEM images of a) CoRu-MCM-41 b) CoRu-KIT-6 c) CoRu-KIT-6

Figure S3. XPS spectra of CoRu-S (MCM-41, KIT-6, SBA-15) for a) Si 2p b) O1s

SEM-EDX

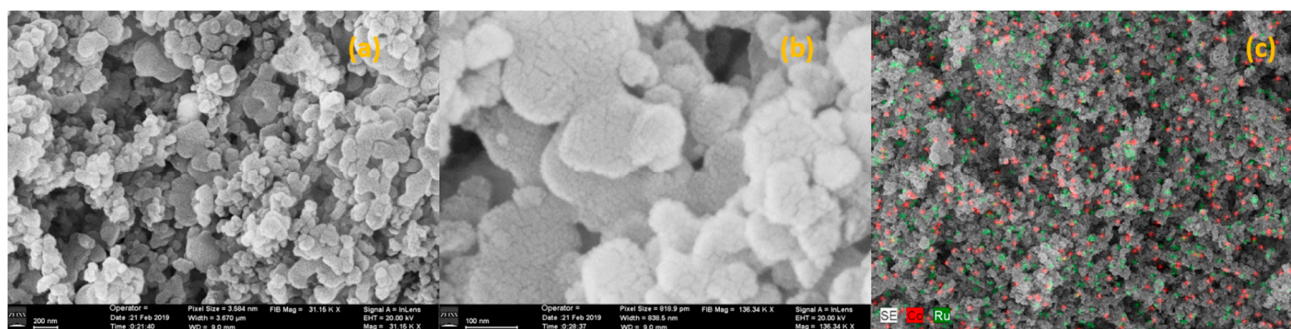


Figure S1. a) Low and b) High magnification SEM images for CoRu-MCM-41 c) EDX mapping for CoRu-MCM-41

TEM

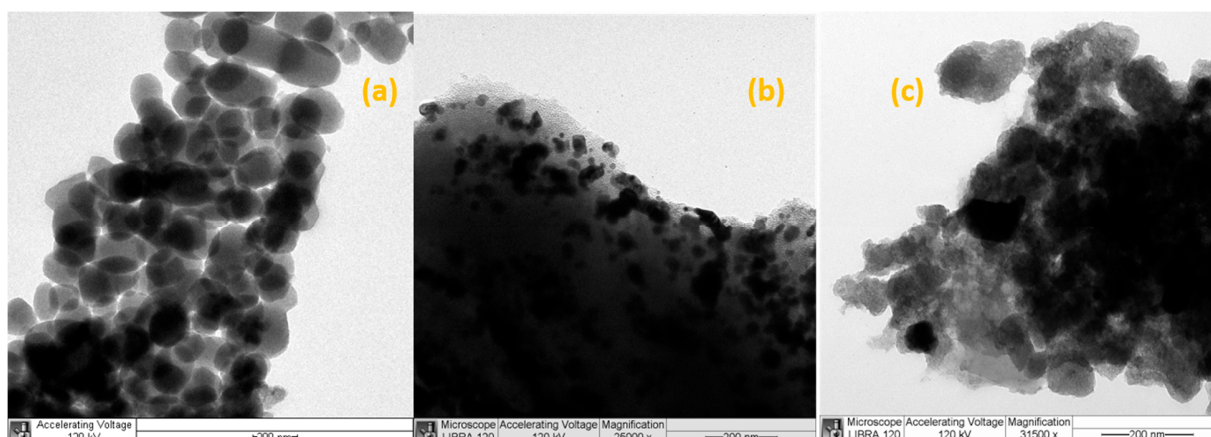


Figure S2. Low magnification TEM images of a) CoRu-MCM-41 b) CoRu-KIT-6 c) CoRu-SBA-15

XPS

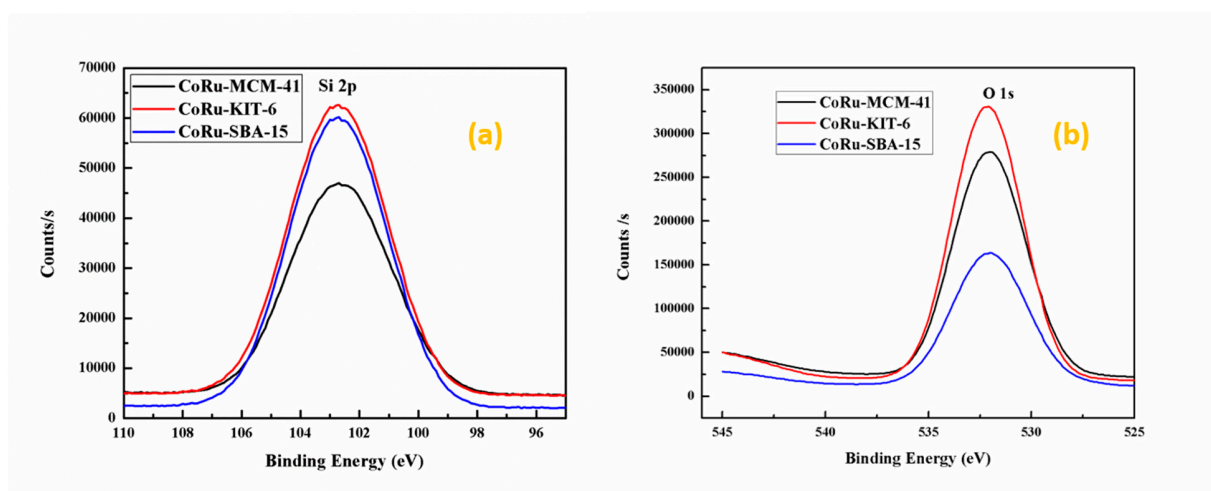


Figure S3. XPS spectra of CoRu-S (MCM-41, KIT-6, SBA-15) for a) Si 2p b) O1s