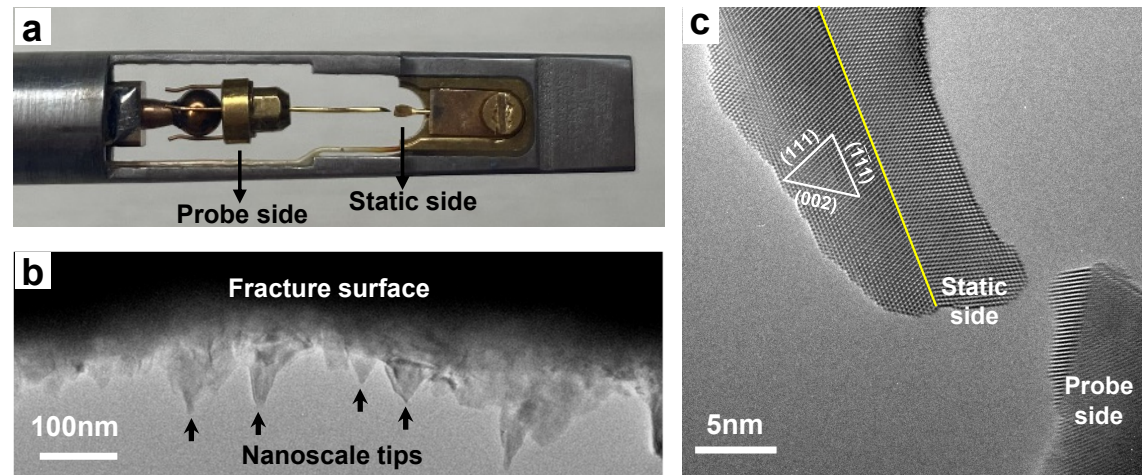
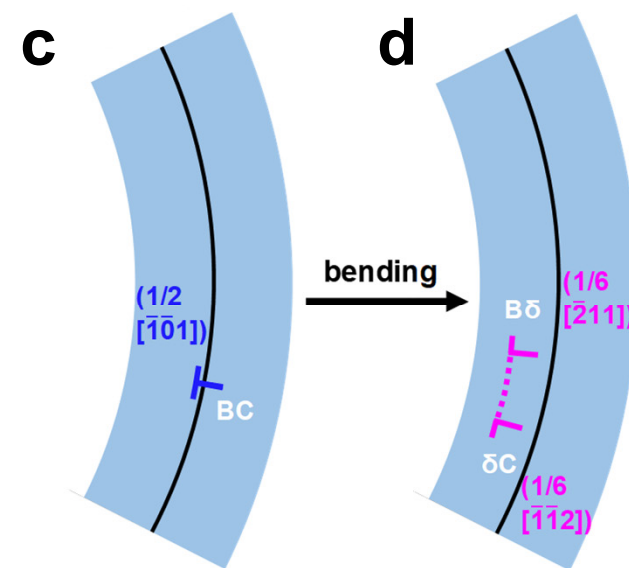
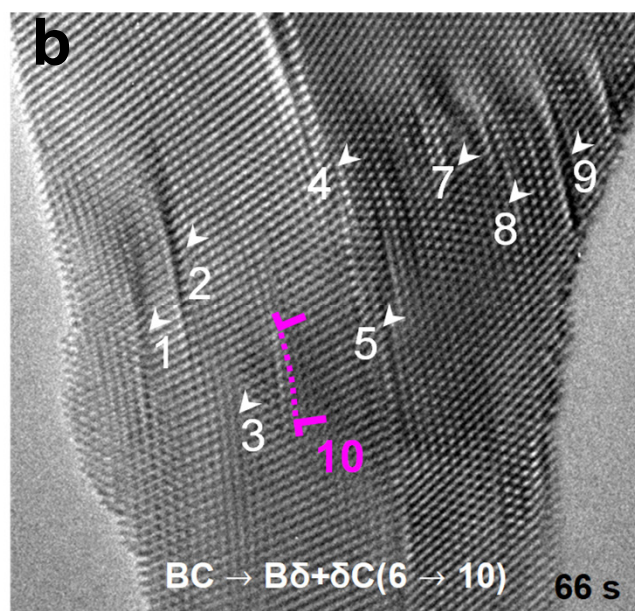
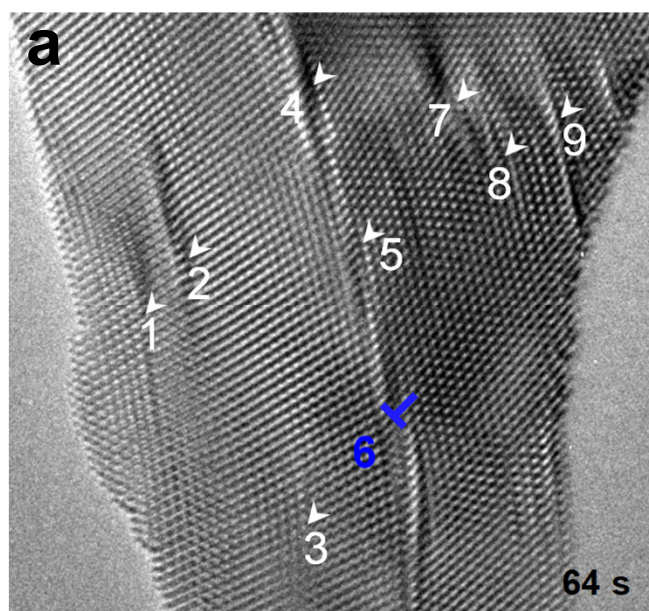


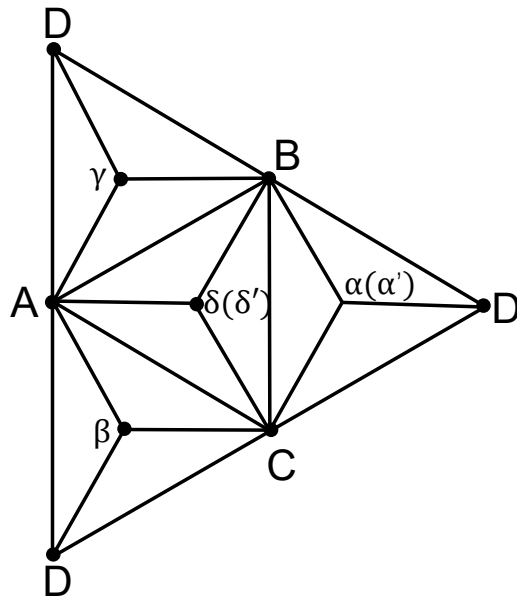
# Supplementary Figure



**Supplementary Figure S1. Experimental set-up.**



**Supplementary Figure S2. Dissociation of TB dislocation upon bending.**



$$BC = \frac{1}{2}[\bar{1}01]$$

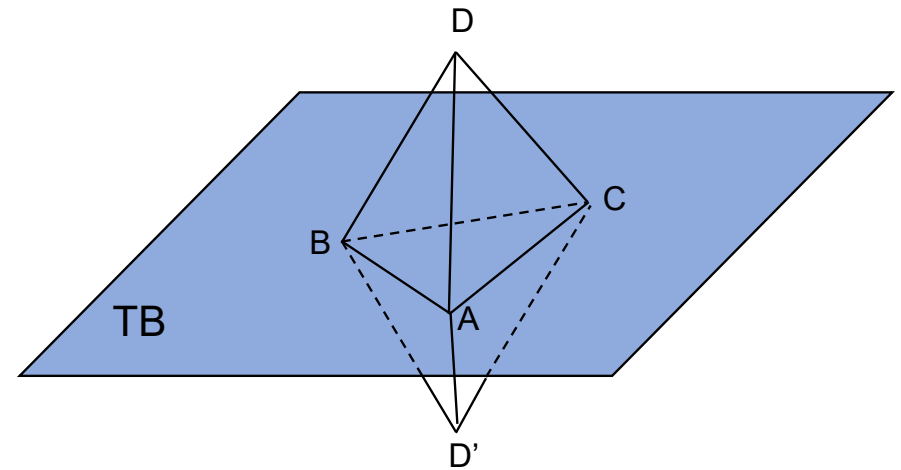
$$B\delta = \frac{1}{6}[\bar{2}11]$$

$$\delta C = \frac{1}{6}[\bar{1}\bar{1}2]$$

$$B\alpha(\alpha') = \frac{1}{6}[\bar{1}12]$$

$$\alpha(\alpha')C = \frac{1}{6}[\bar{2}\bar{1}1]$$

$$\alpha'\delta' = \frac{1}{6}[\bar{1}0\bar{1}]$$



**Supplementary Figure S3. The simplified Thompson tetrahedron to illustrate slip systems and dislocation reactions in an fcc lattice.**