

Supplementary information

Features of the phase formation of Cr/Mn/Fe/Co/Ni/Cu codoped bismuth niobate pyrochlore

N.A. Zhuk¹, B.A. Makeev², M. G. Krzhizhanovskaya³, S.V. Nekipelov⁴, D.V. Sivkov⁴

¹*Syktyvkar State University, Oktyabrsky prospect, 55, Syktyvkar, 167001, Russia

²Institute of Geology of the Komi Science Center UB RAS, Pervomaiskaya st. 48, Syktyvkar, 167982, Russia

³Saint Petersburg State University, University Emb. 7/9, 199034, St. Petersburg, Russia

⁴Institute of Physics and Mathematics of the Komi Science Center UB RAS, Opleznina st. 4, Syktyvkar, Republic of Komi, 167982, Russia

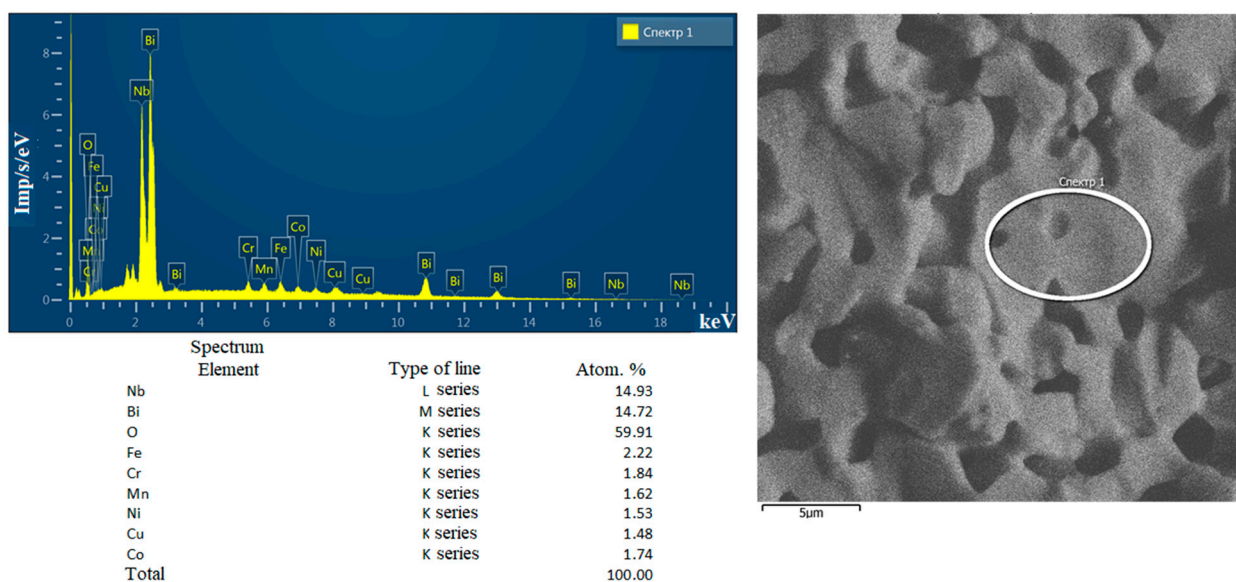
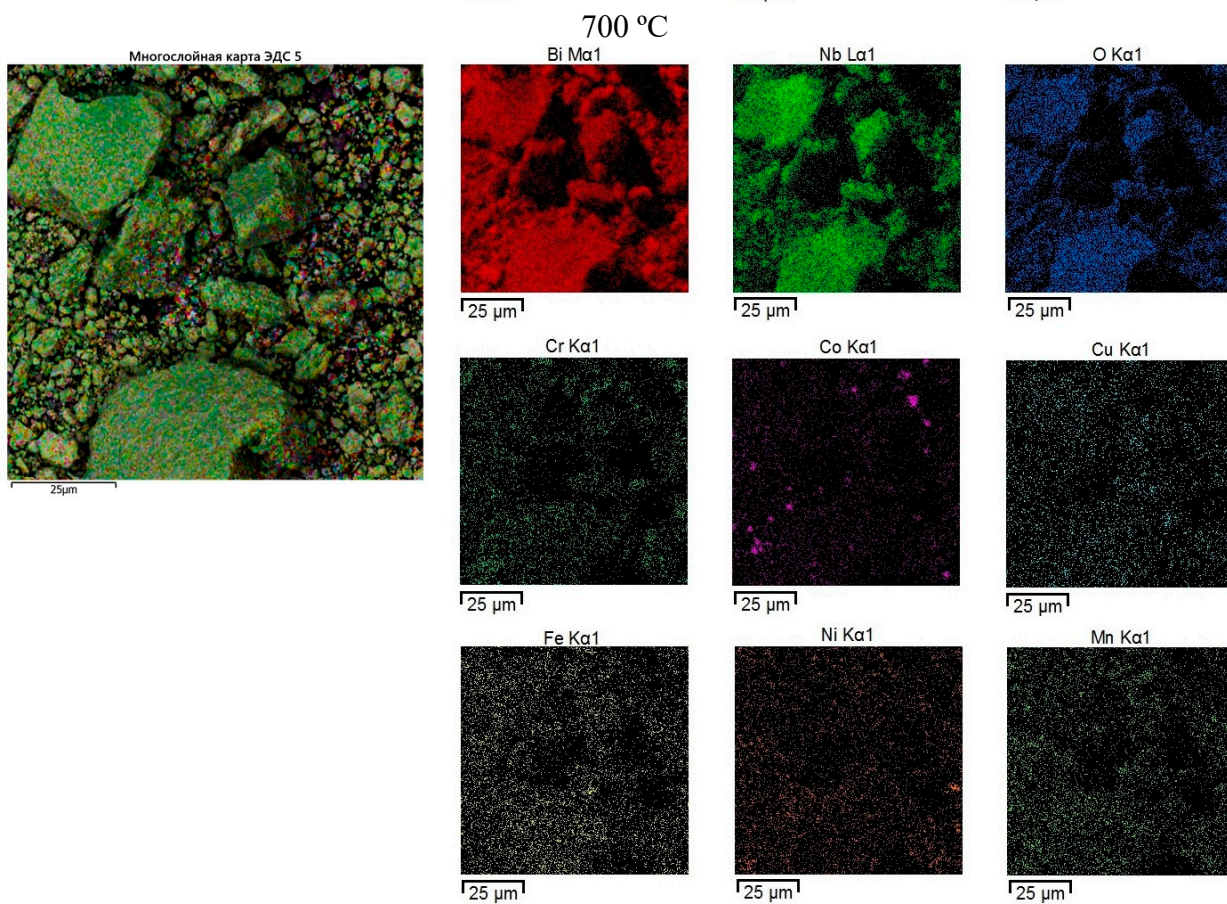
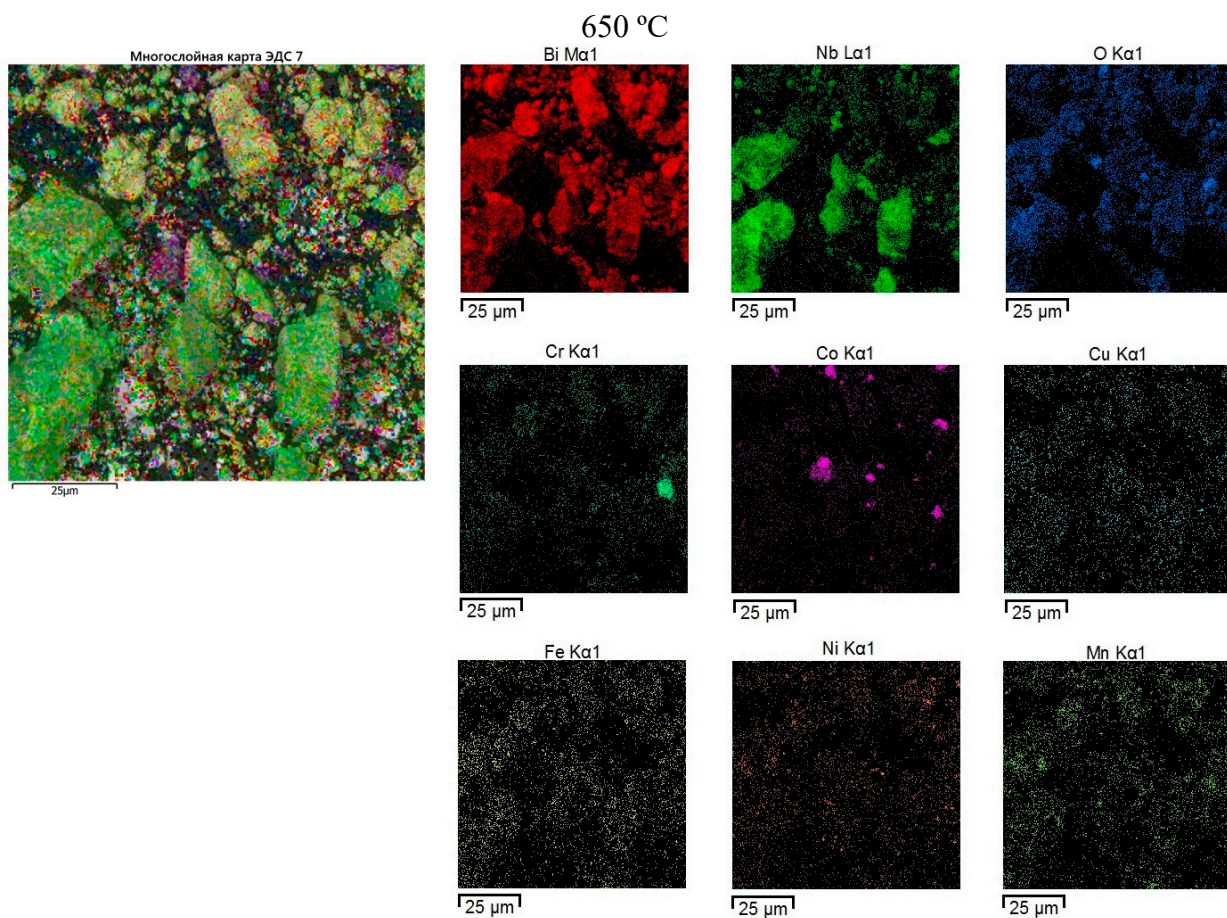
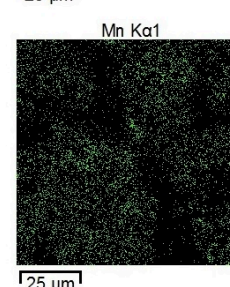
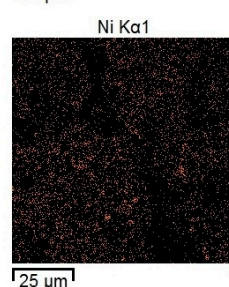
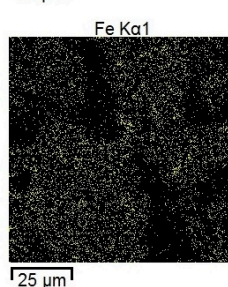
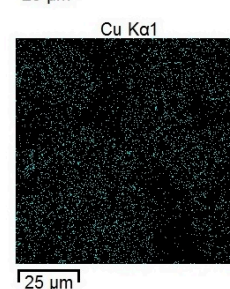
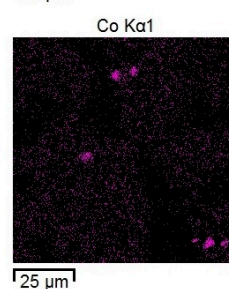
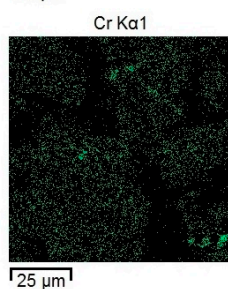
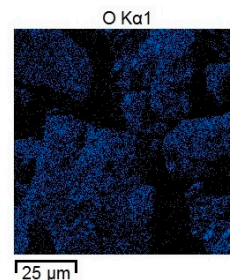
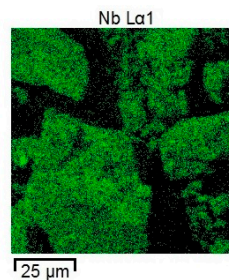
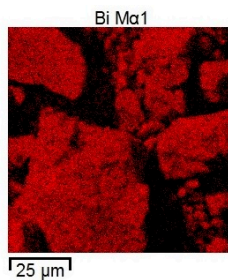
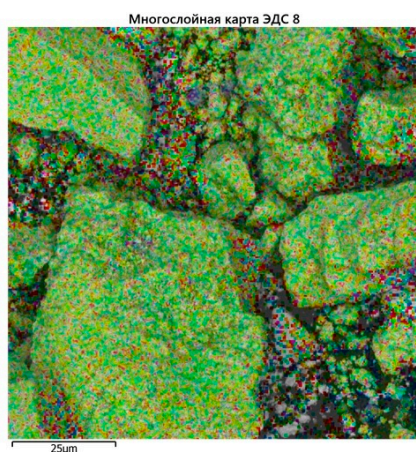


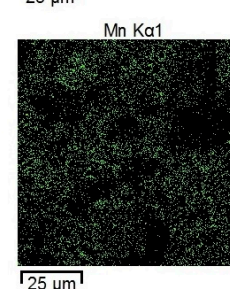
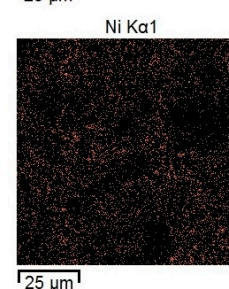
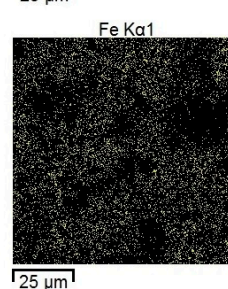
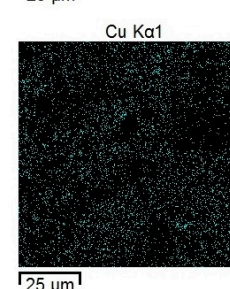
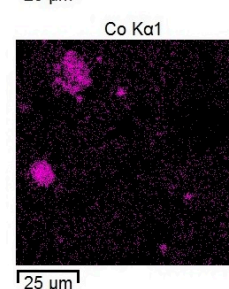
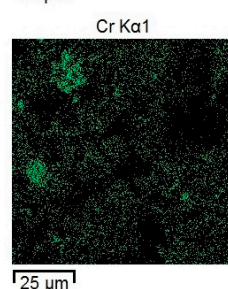
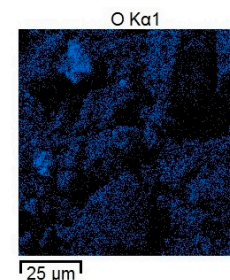
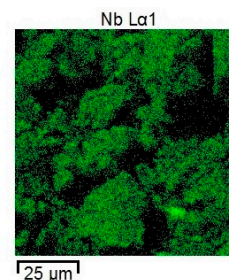
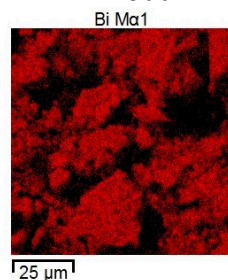
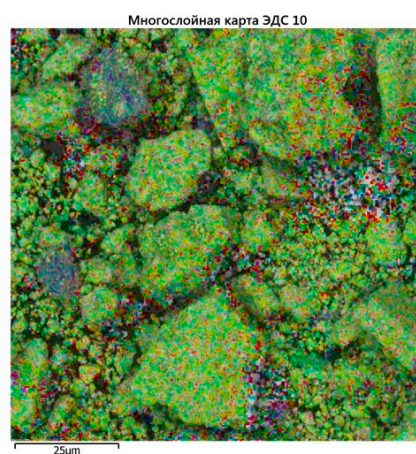
Fig. S1 Microphotograph and EDS analysis of the $\text{Bi}_2\text{Cr}_{1/6}\text{Mn}_{1/6}\text{Fe}_{1/6}\text{Co}_{1/6}\text{Ni}_{1/6}\text{Cu}_{1/6}\text{Nb}_2\text{O}_{9+\Delta}$ sample, calcined at 1050 °C.



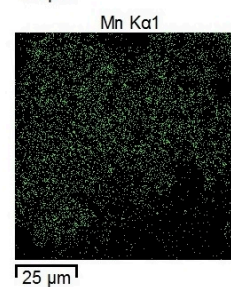
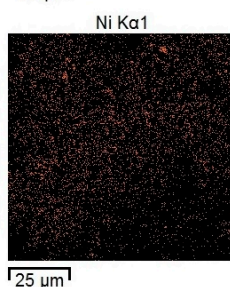
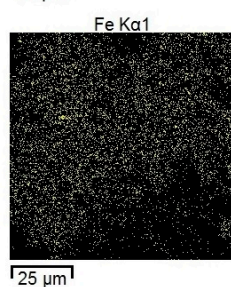
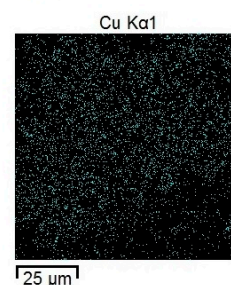
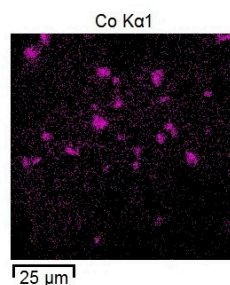
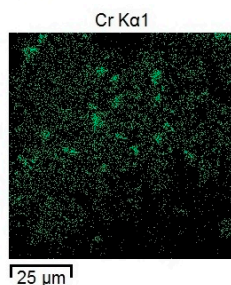
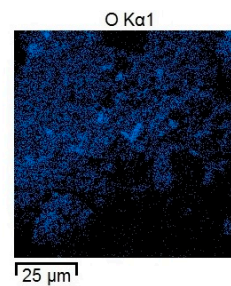
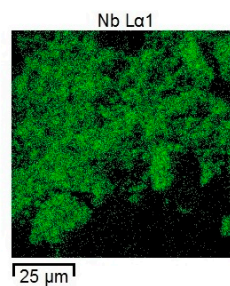
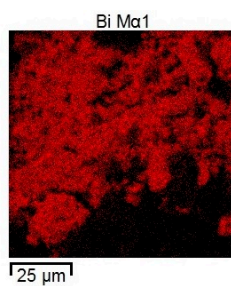
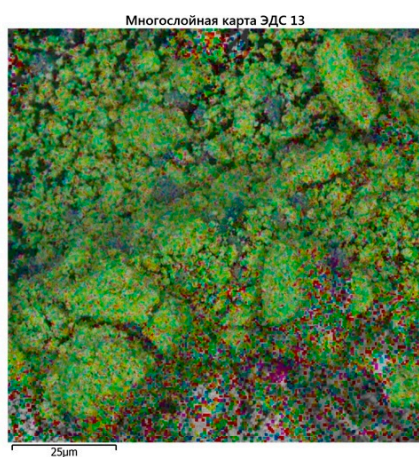
750 °C



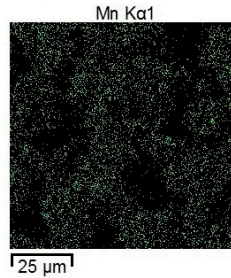
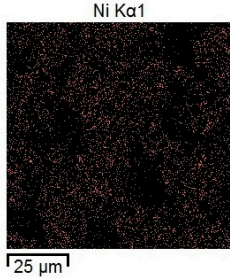
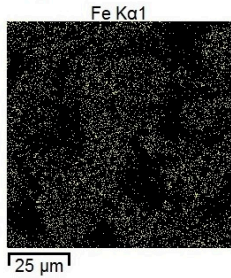
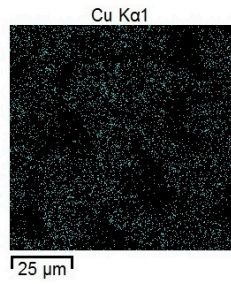
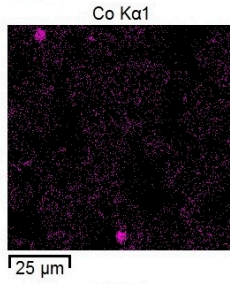
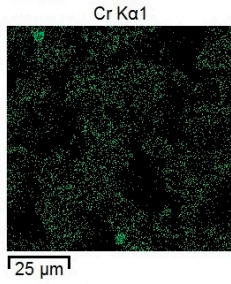
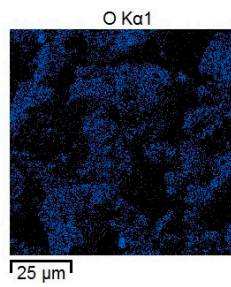
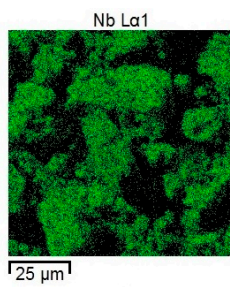
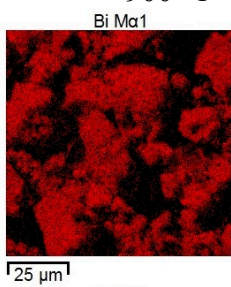
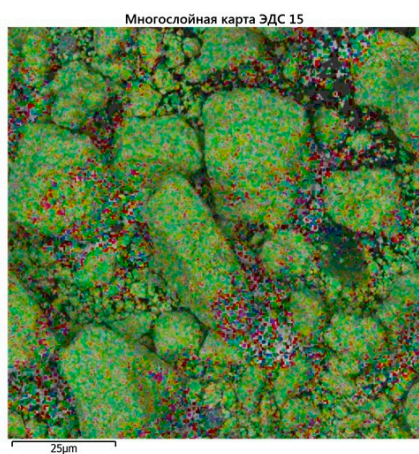
800 °C



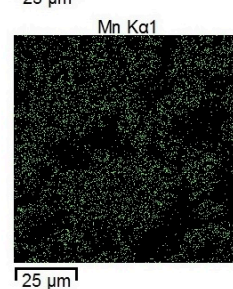
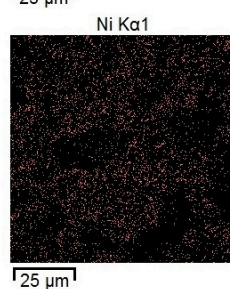
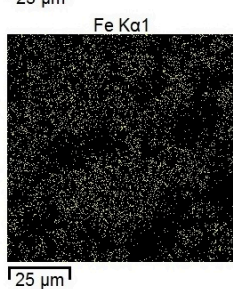
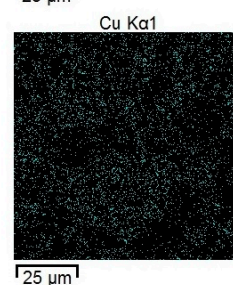
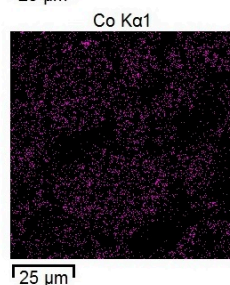
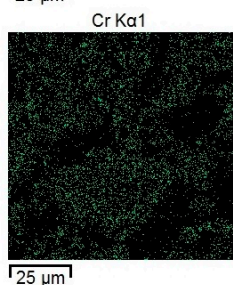
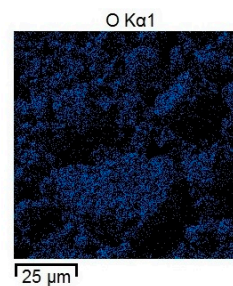
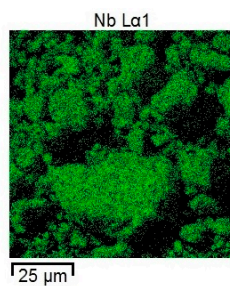
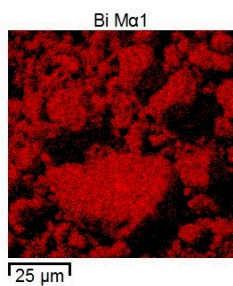
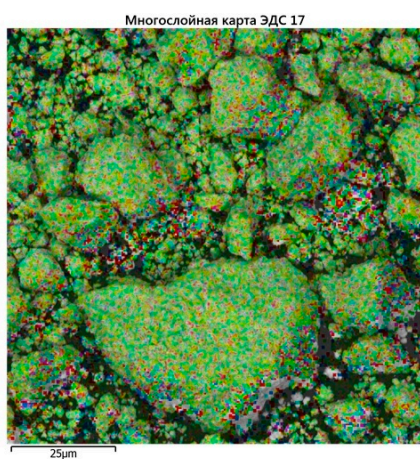
850 °C



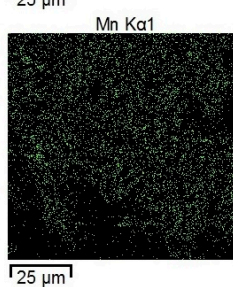
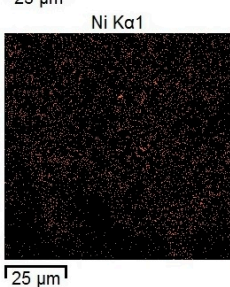
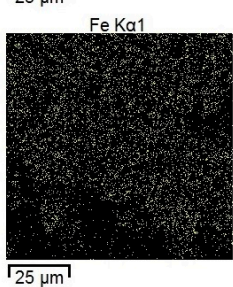
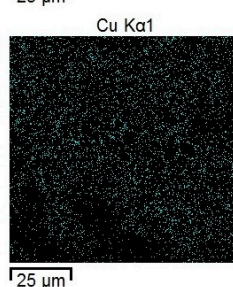
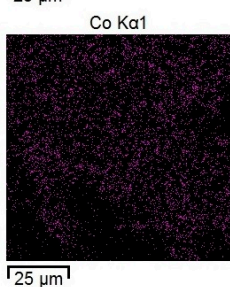
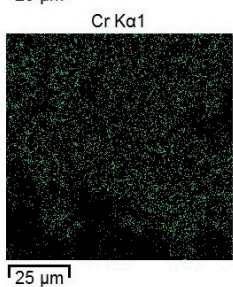
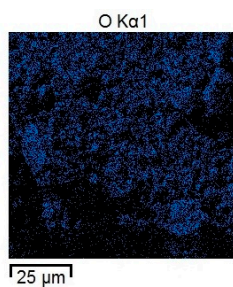
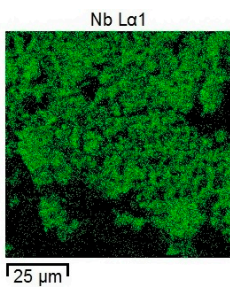
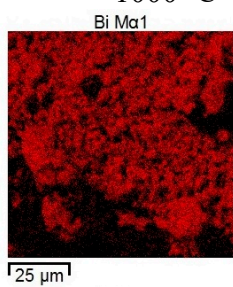
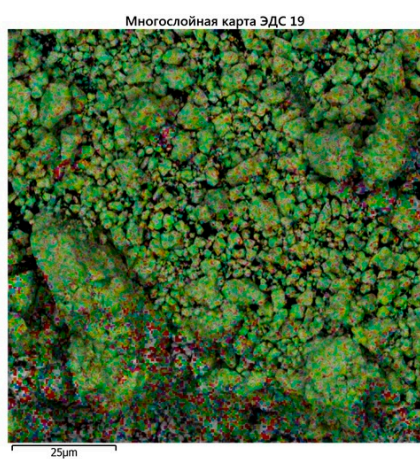
900 °C



950 °C



1000 °C



1050 °C

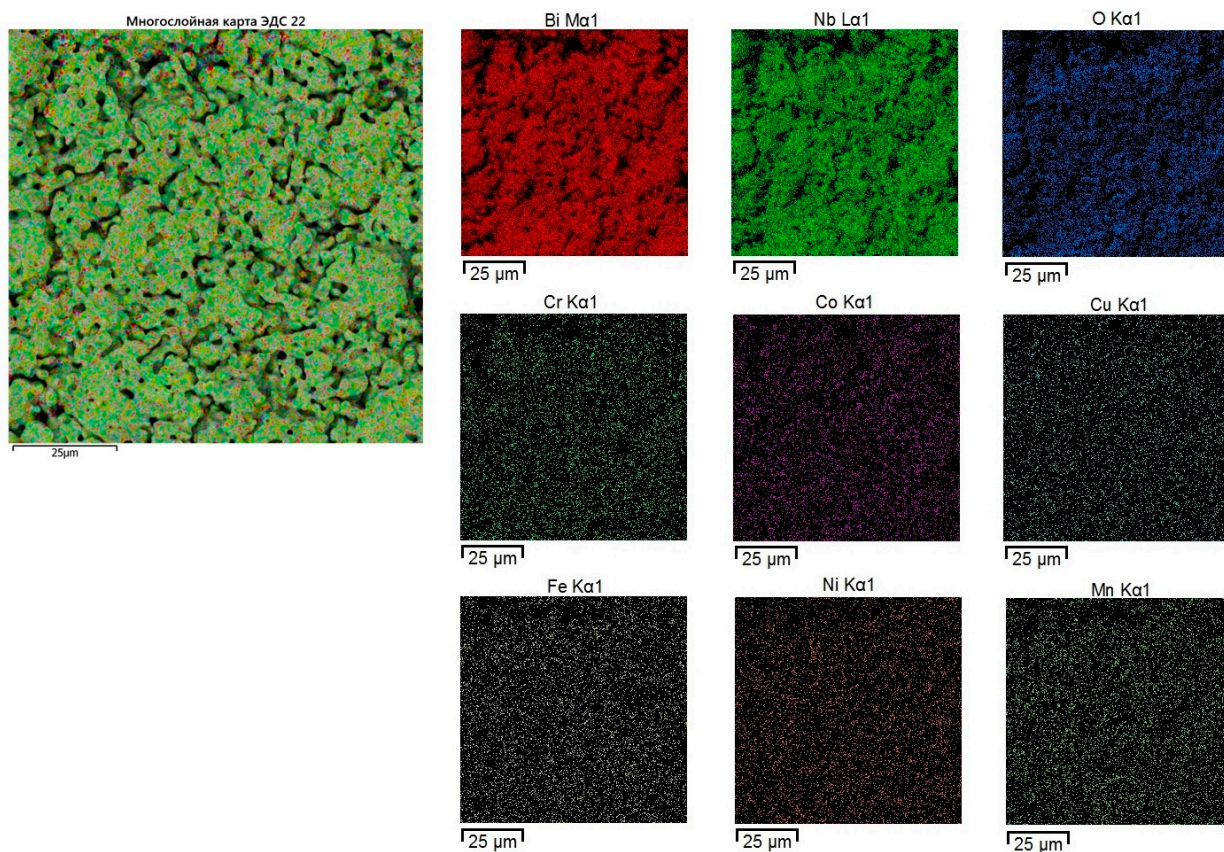


Fig.S2 EDS elemental mapping of the $\text{Bi}_2\text{Cr}_{1/6}\text{Mn}_{1/6}\text{Fe}_{1/6}\text{Co}_{1/6}\text{Ni}_{1/6}\text{Cu}_{1/6}\text{Nb}_2\text{O}_{9+\Delta}$ samples, synthesized at temperatures from 650 to 1050 °C

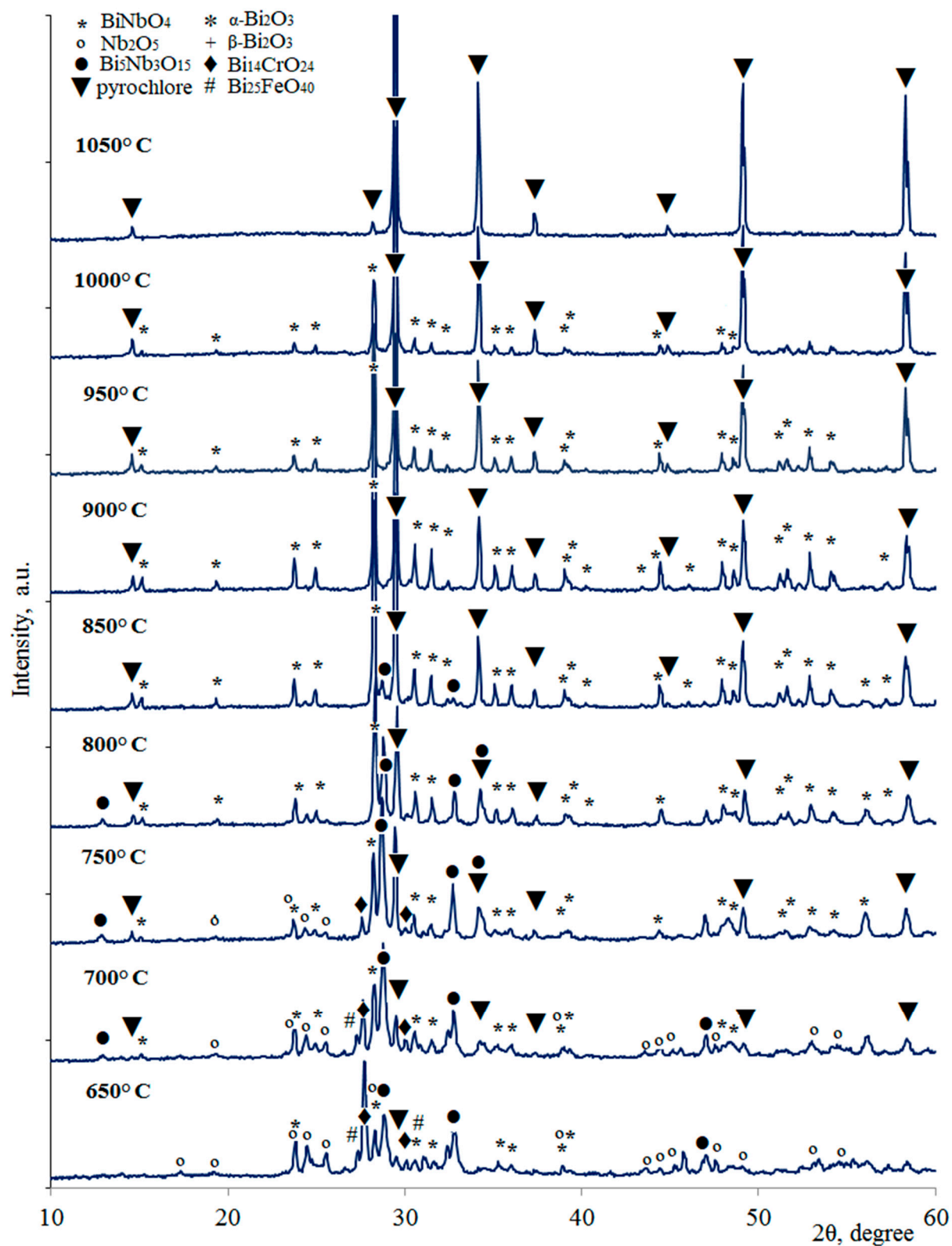


Fig. S3 X-ray powder diffraction patterns of the $\text{Bi}_2\text{Cr}_{1/6}\text{Mn}_{1/6}\text{Fe}_{1/6}\text{Co}_{1/6}\text{Ni}_{1/6}\text{Cu}_{1/6}\text{Nb}_2\text{O}_{9+\Delta}$ sample, calcined from 650 to 1050 °C (15 h).