

Supplementary Materials:

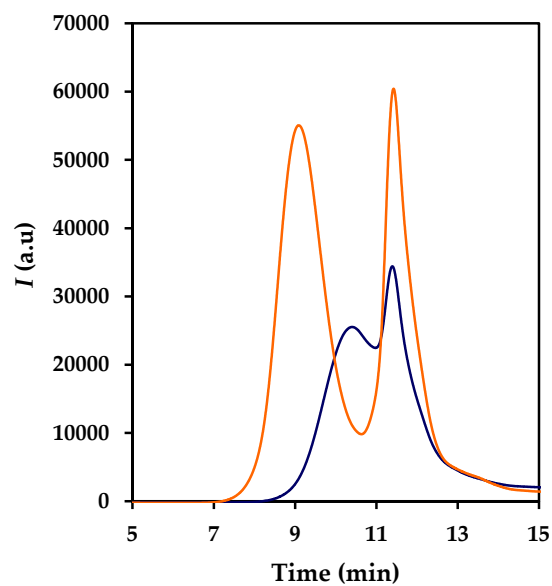


Figure S1. GPC curves for poly(Myristic acid/MA-LO) (orange) and PLC (blue) samples. Peaks at the high retention time (i.e., 12 min) corresponds to the salts of the elution medium.

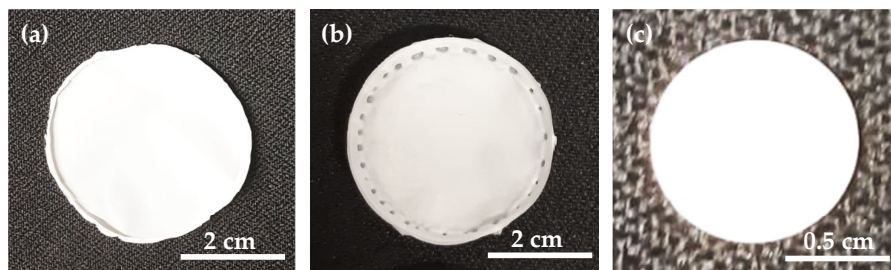


Figure S2. Solvent casting films obtained from PBS/poly(PA-LO) 70:30 (a), PBS/poly(PA-LO) 50:50 (b) and a pressed tablet of pure poly(PA-LO) (c).

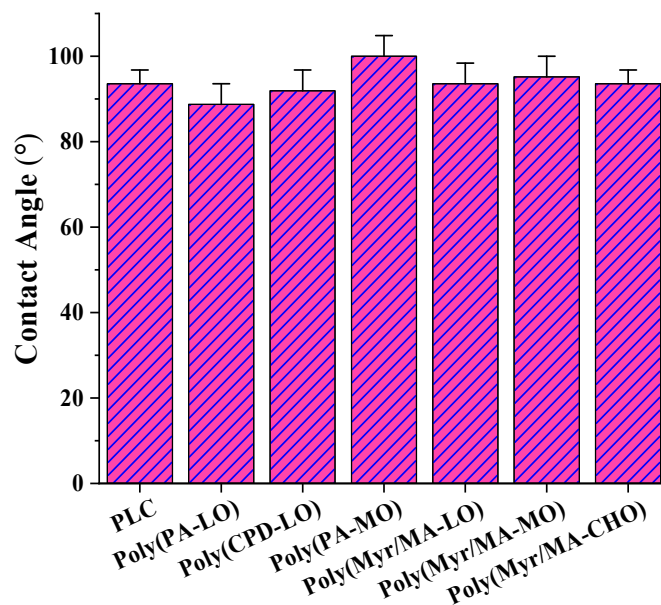


Figure S3. Contact angles determined from the different pressed tablets of the studied terpene derivatives.

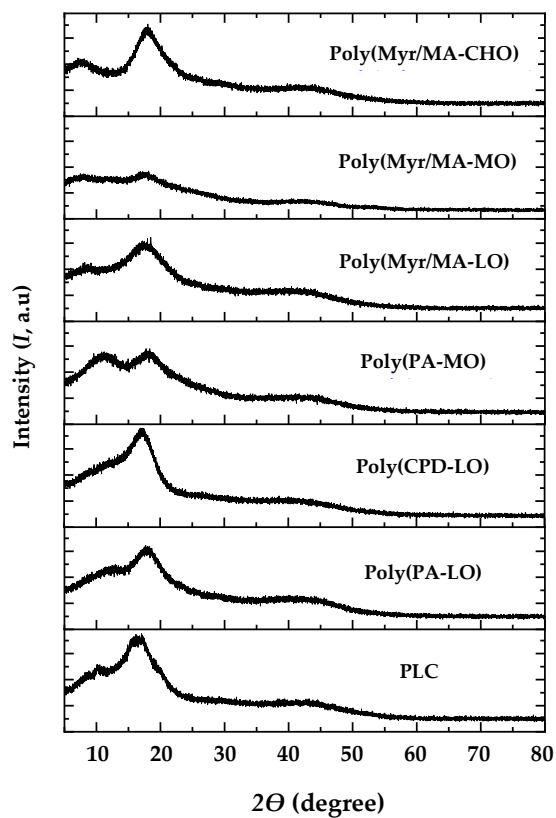


Figure S4. X-ray diffraction profiles of the as synthesized powdered samples of the different terpene derivatives.

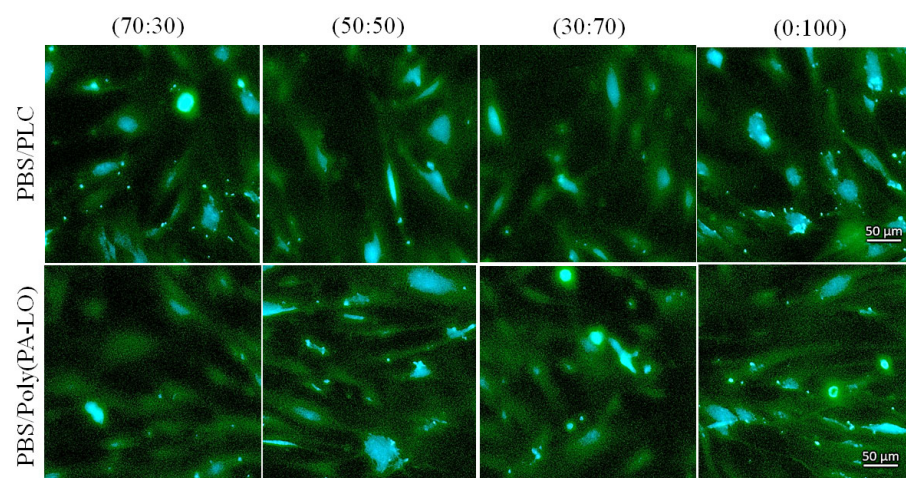


Figure S5. Fluorescence images of the proliferated hFF fibroblasts on the different surfaces of the PBS/PLC and PBS/poly(PA-LO) blends. The cytoplasm was stained with phalloidin (green) and the nucleus with Hoechst (blue).