

Supplementary Information

Soft liquid metal-based conducting composite

with robust electrical durability for a wearable Electrocardiogram sensor

Yewon Kim[†], Jihyang Song[†], Soojung An, Mikyung Shin^{*}, Donghee Son^{*}

[†]These authors contributed equally to this work

^{*}Correspondence to be addressed to: *daniel3600@g.skku.edu* and *mikyungshin@g.skku.edu*

This PDF file includes:

Supplementary Figures. S1–S3

Supplementary Figures

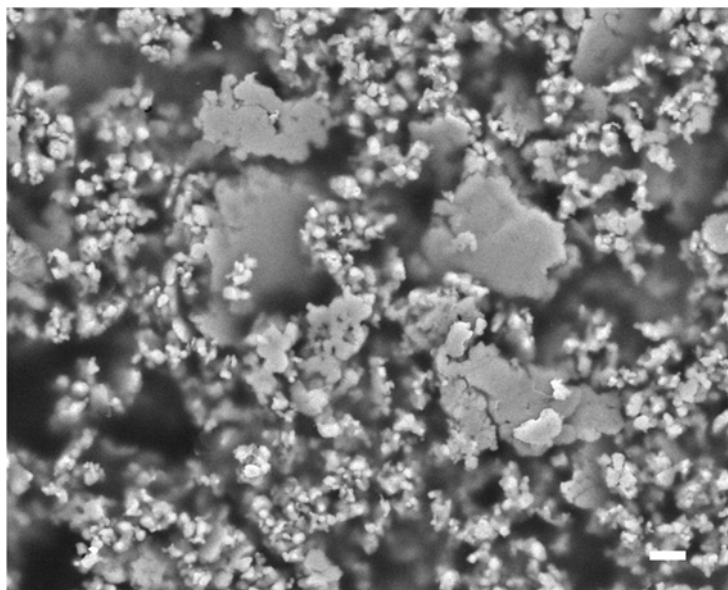


Figure S1. SEM image of AgF-SEBS composite (scale bar : 1 μm).

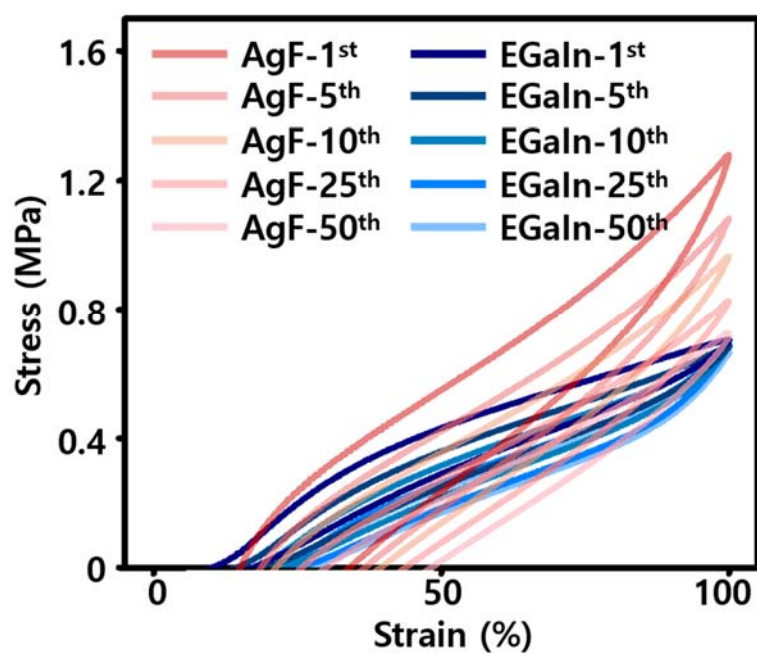


Figure S2. Stress-Strain cyclic test of EGaIn-SEBS composite and AgF-SEBS composite.

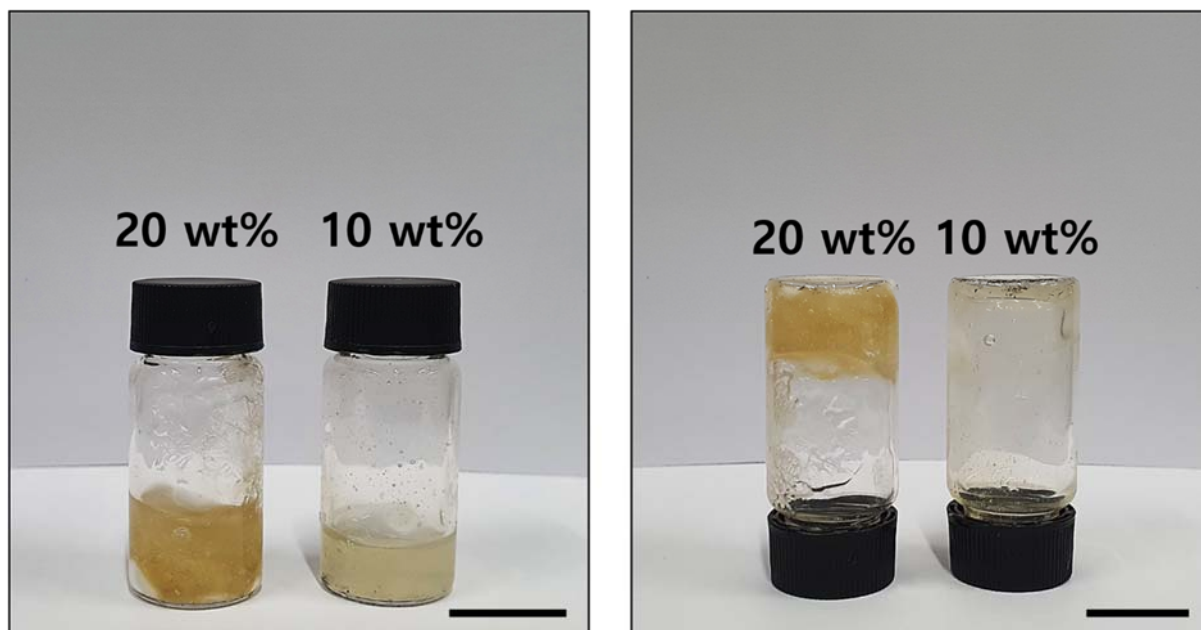


Figure S3. Photographs of 20 wt% and 10 wt% of alginate solution (left) and right after turning over the vials (right) (scale bar : 1 cm).