

Figure S1. Photo (a) and schematic view of the single-capillary laboratory unit for the electrospinning process (b), where: 1 – protective installation box; 2 – bin with a polymer solution and a capillary; 3 – high voltage source; 4 – stable precipitating electrode, 5 – air pressure regulator.

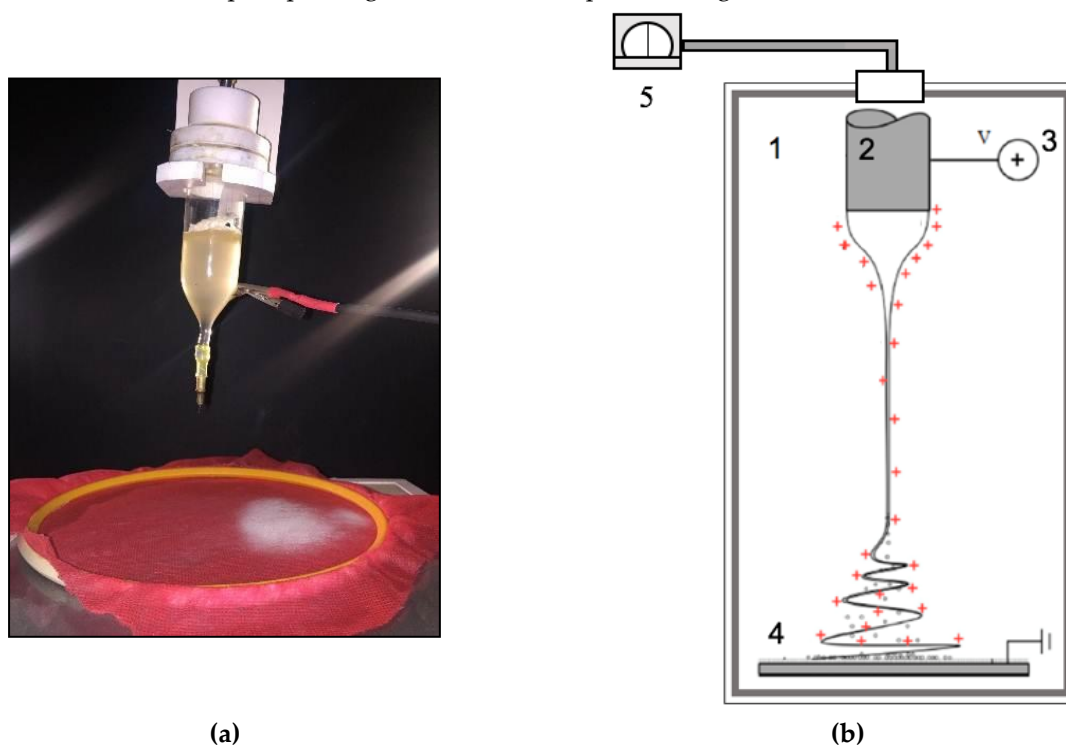
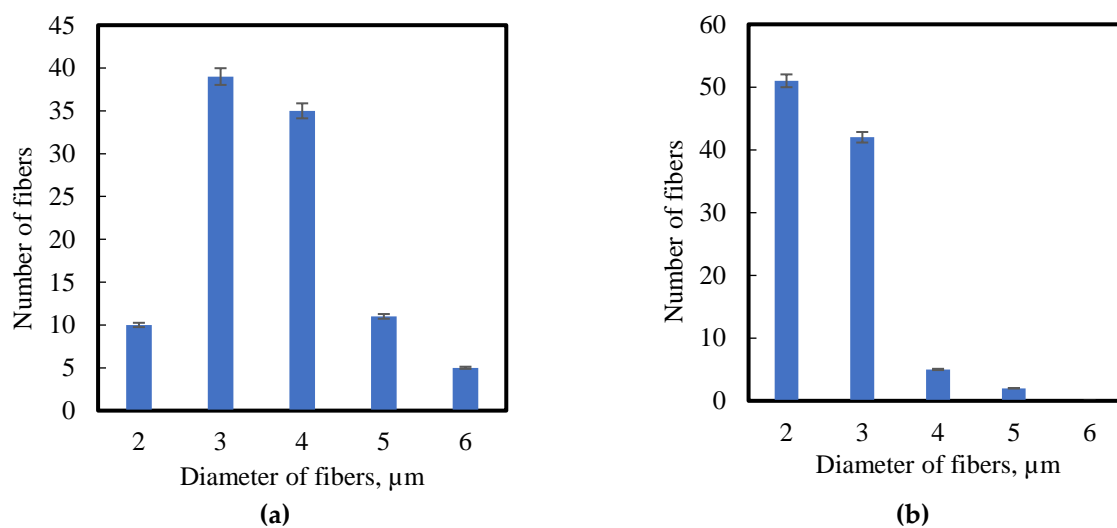
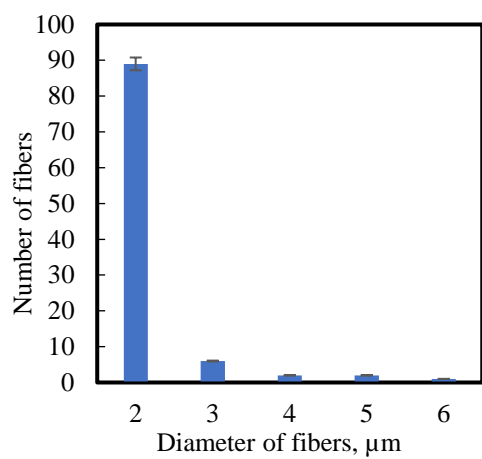
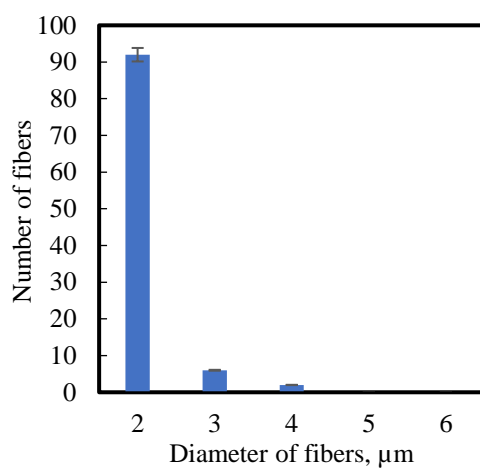


Figure S2. Histogram the fibers' size distribution of PHB and H_{mi}/PHB nonwoven composites, where: a – 0 wt. %, b – 1 wt. %, c – 3 wt. %, and d – 5 wt. %.





(c)



(d)