

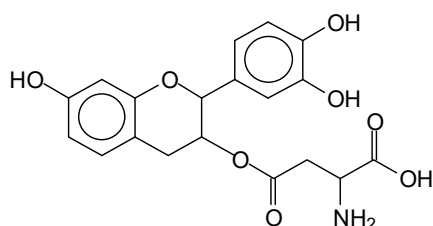
SUPPLEMENTARY MATERIAL

A STUDY OF CONCEPT TO PREPARE TOTALLY BIO WOOD ADHESIVES FROM ONLY SOY PROTEIN AND TANNIN

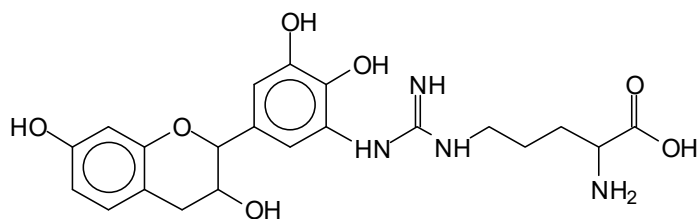
Saman Ghahri ^{1*}, Antonio Pizzi ^{2*}, Reza Hajihassani ¹

Table S1. Assignments of molecular structures from MALDI ToF spectrometry for Soy Protein Isolate (SPI) and Quebracho tannin extract resin prepared at 80°C.

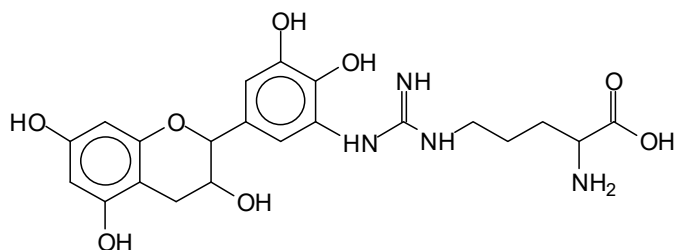
410 Da = fisetinidin-aspartic acid with Na⁺



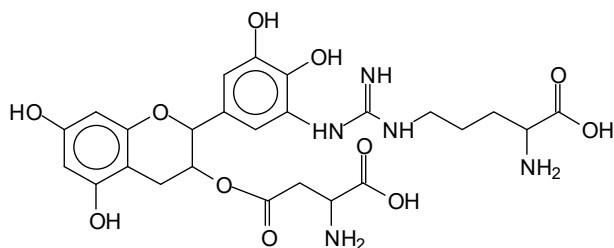
467 Da = robinetinidin-arginine, with Na⁺, calculated 469 Da.



483 Da = delphinidin-arginine with Na⁺ (calculated 485 Da)

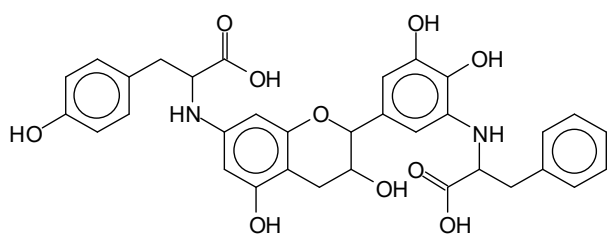


576 Da = aspartic acid-delphinidin-arginine, no Na⁺, and 600 Da with Na⁺

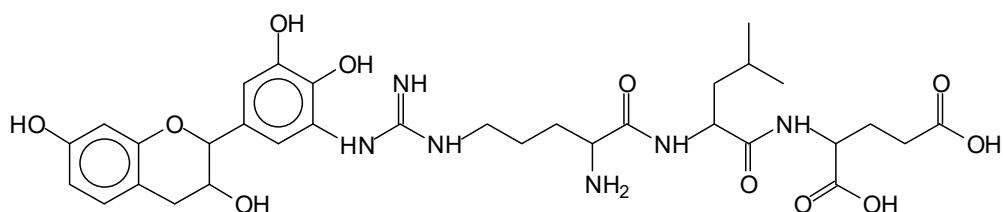


614-616 Da = tyrosine-delphinidin-phenylalanine no Na⁺, calculated 616

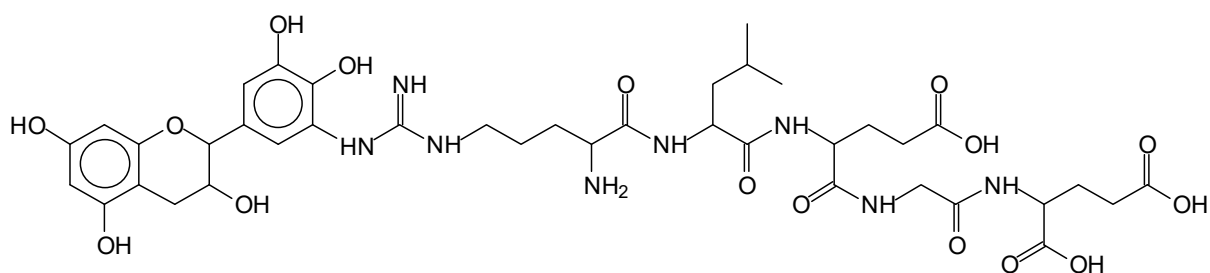
640-642 Da = tyrosine-delphinidin-phenylalanine with Na⁺, calculated 640 Da



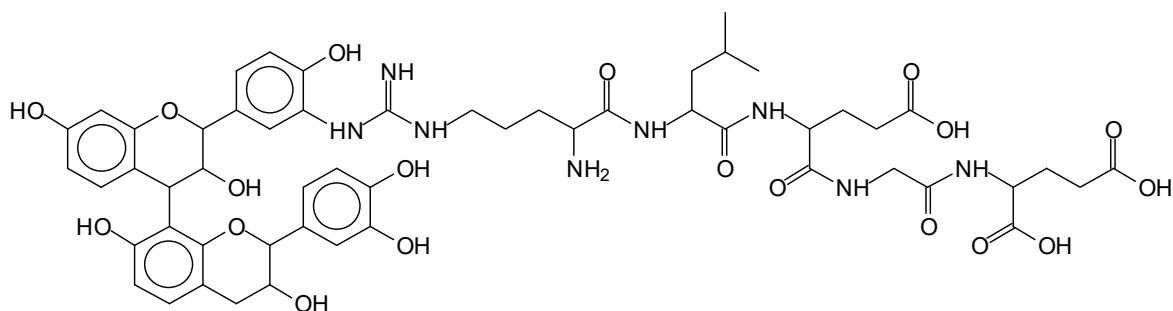
688 Da = no Na⁺, calculated 688.7 Da., robinetinidin-arginin-leucin-aspartic acid



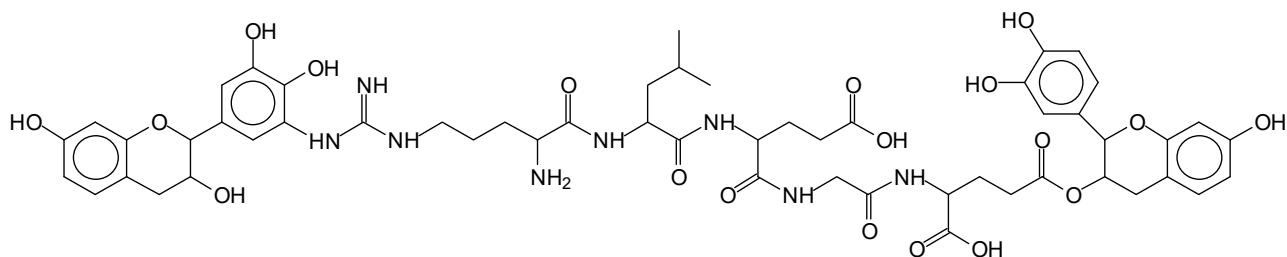
889 Da = no Na⁺, calculated 890 Da, galocatechin-arginine-leucin-aspartic acid-glycin-glutamic acid



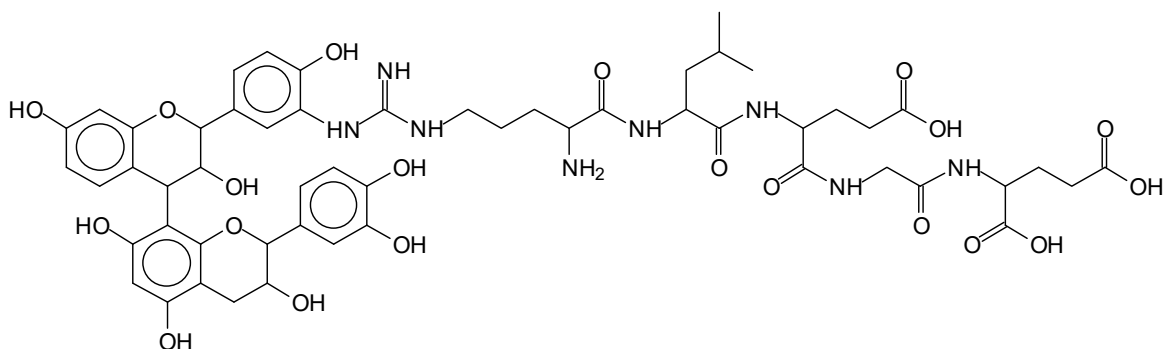
1128-1130 Da = no Na⁺, fisetinidin dimer-arginine-leucin-aspartic acid-glycin-glutamic acid



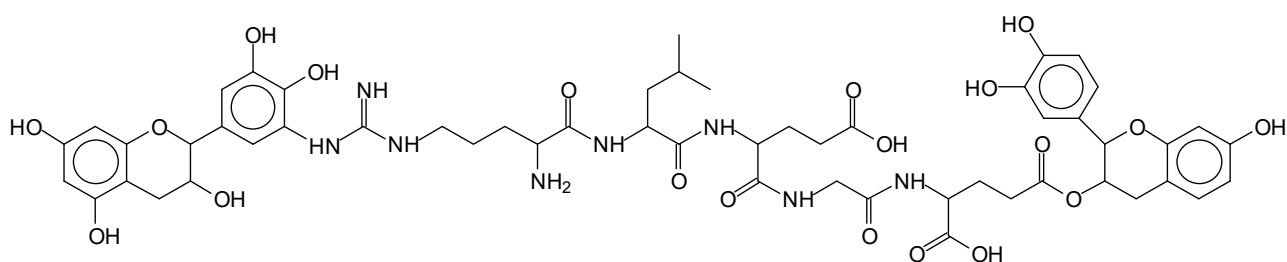
OR



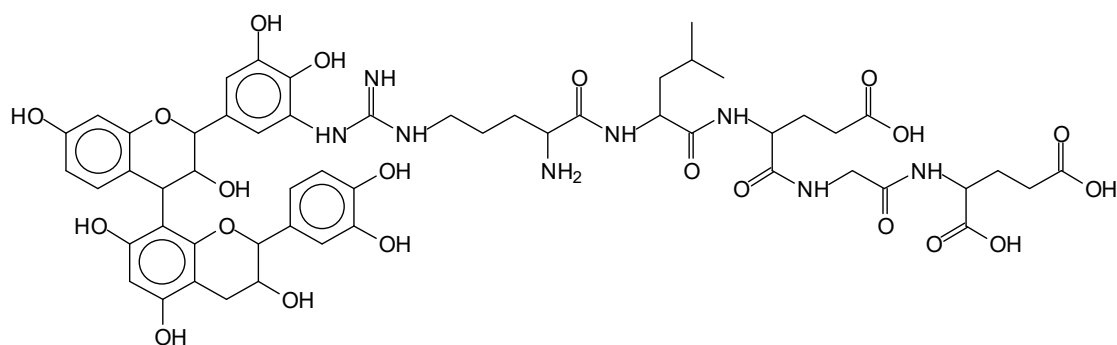
1146 Da = no Na⁺, catechin-fisetinidin-arginine-leucin-aspartic acid-glycin-glutamic acid



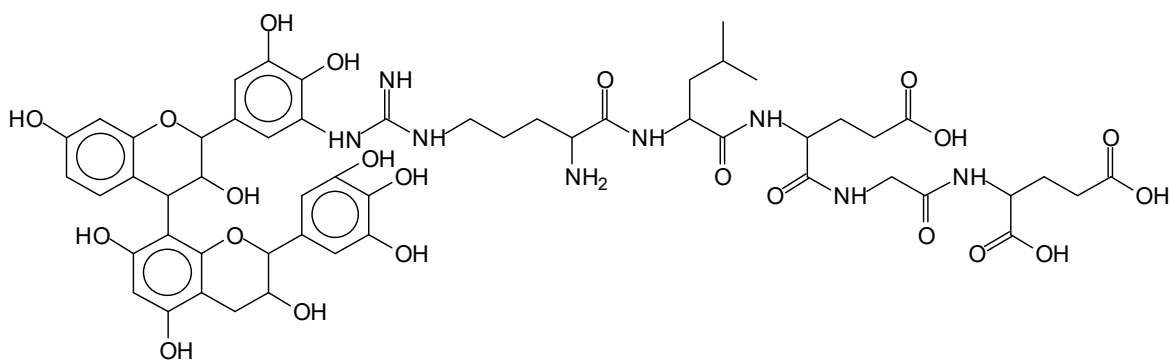
OR



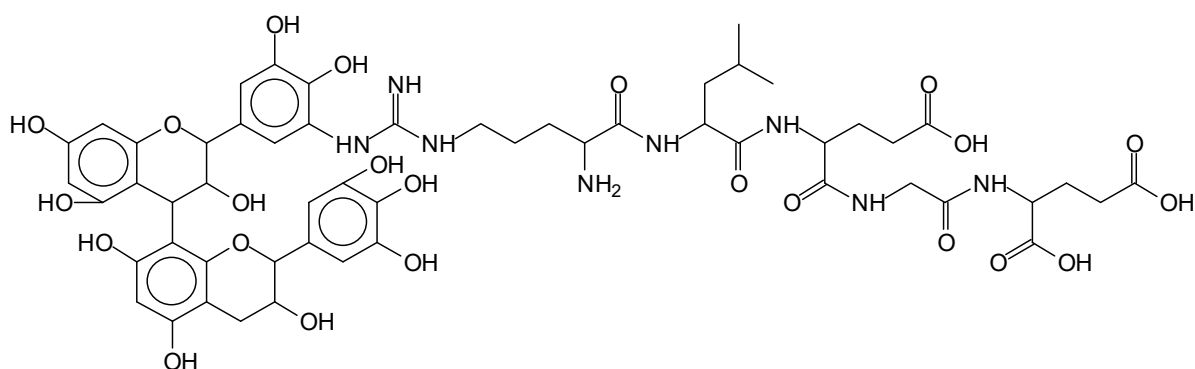
1161 Da = no Na⁺, calc. 1162 Da, catechin-robinetidin-arginine-leucin-aspartic acid-glycin-glutamic acid



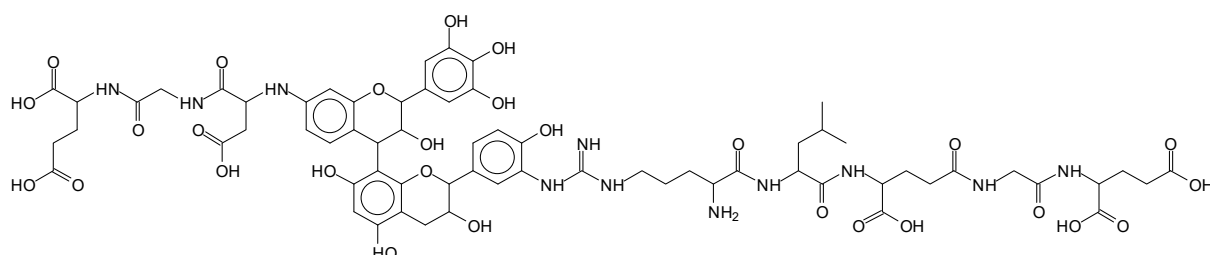
1177 Da = no Na⁺, calc. 1178 Da, delphinidin-robinetidin-arginine-leucin-aspartic acid-glycin-glutamic acid



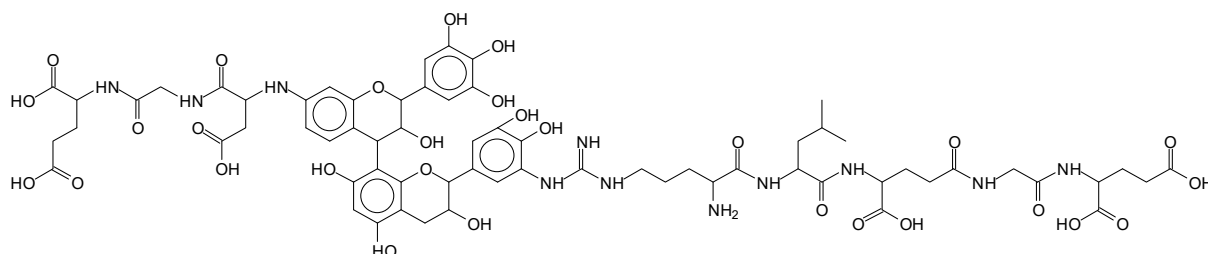
1194 Da = no Na⁺; calc. 1194 Da, delphinidin dimer-arginine-leucin-aspartic acid-glycin-glutamic acid



1465 Da = no Na⁺, glutamic acid-glycine-aspartic acid-robinatenidin-catechin--arginine-leucin-aspartic acid-glycin-glutamic acid



1481 Da = no Na⁺, glutamic acid-glycine-aspartic acid-robinatenidin-gallocatechin--arginine-leucin-aspartic acid-glycin-glutammic acid



1497 Da = no Na⁺, glutamic acid-glycine-aspartic acid-gallocatechin dimer-arginine-leucin-aspartic acid-glycin-glutammic acid

