

Article

Poly lactide-Grafted Metal-Alginate Aerogels

Grigorios Raptopoulos ^{1,*}, Ioannis Choinopoulos ², Filippos Kontoes-Georgoudakis ² and Patrina Paraskevopoulou ^{1,*}

¹ Inorganic Chemistry Laboratory, Department of Chemistry, National and Kapodistrian University of Athens, Panepistimiopolis Zografou, 15771 Athens, Greece

² Industrial Chemistry Laboratory, Department of Chemistry, National and Kapodistrian University of Athens, Panepistimiopolis Zografou, 15771 Athens, Greece; ichoinop@chem.uoa.gr (I.C.); fkontoes@chem.uoa.gr (F.K.-G.)

* Correspondence: grigorisrap@chem.uoa.gr (G.R.); paraskevopoulou@chem.uoa.gr (P.P.)

Table of contents

	Page
Figure S1. Size distributions of Ca-alginate and g-Ca-alginate (G41) aerogels with different LA/OH molar ratios, as indicated (diameters measured with ImageJ; histograms were calculated using OriginPro 9.0). Mean diameter and sample size (N) are shown on the Figure.	S2
Figure S2. Size distributions of Ca-alginate and g-Ca-alginate (G56) aerogels with different LA/OH molar ratios, as indicated (diameters measured with ImageJ; histograms were calculated using OriginPro 9.0). Mean diameter and sample size (N) are shown on the Figure.	S3
Figure S3. Size distributions of M-alginate and g-M-alginate (G41) aerogels with different LA/OH molar ratios, as indicated (diameters measured with ImageJ; histograms were calculated using OriginPro 9.0). Mean diameter and sample size (N) are shown on the Figure.	S4
Figure S4. Size distributions of M-alginate and g-M-alginate (G56) aerogels with different LA/OH molar ratios, as indicated (diameters measured with ImageJ; histograms were calculated using OriginPro 9.0). Mean diameter and sample size (N) are shown on the Figure.	S5
Figure S5. DSC thermograms for Ca-alginate and g-Ca-alginate (G41) aerogels with different LA/OH molar ratios, as indicated.	S6
Figure S6. N ₂ -sorption diagrams of Ca-alginate and g-Ca-alginate (G41) aerogels, as indicated. Insets show pore size distributions by the BJH method.	S8
Figure S7. N ₂ -sorption diagrams of Ca-alginate and g-Ca-alginate (G56) aerogels, as indicated. Insets show pore size distributions by the BJH method.	S9
Figure S8. N ₂ -sorption diagrams of M-alginate and g-M-alginate (G41) aerogels, as indicated. Insets show pore size distributions by the BJH method.	S10
Figure S9. N ₂ -sorption diagrams of M-alginate and g-M-alginate (G56) aerogels, as indicated. Insets show pore size distributions by the BJH method.	S11

Citation: Raptopoulos, G.; Choinopoulos, I.; Kontoes-Georgoudakis, F.; Paraskevopoulou, P. Poly lactide-Grafted Metal-Alginate Aerogels. *Polymers* **2022**, *14*, 1254. <https://doi.org/10.3390/polym14061254>

Academic Editor: Amir Ameli

Received: 16 February 2022

Accepted: 15 March 2022

Published: 21 March 2022

Publisher's Note: MDPI stays neutral with regard to jurisdictional claims in published maps and institutional affiliations.



Copyright: © 2022 by the authors. Submitted for possible open access publication under the terms and conditions of the Creative Commons Attribution (CC BY) license (<https://creativecommons.org/licenses/by/4.0/>).

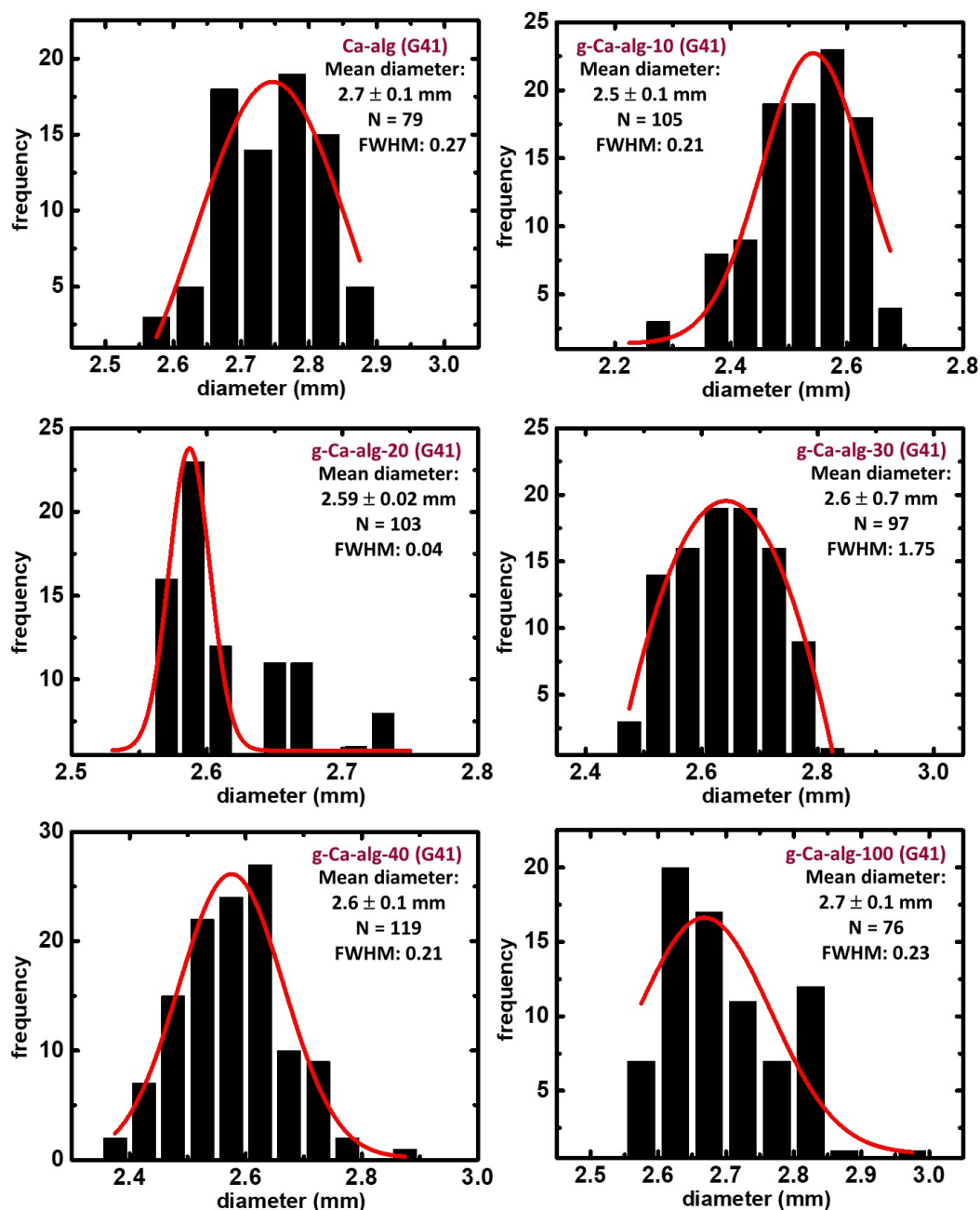


Figure S1. Size distributions of Ca-alginate and g-Ca-alginate (G41) aerogels with different LA/-OH molar ratios, as indicated (diameters measured with ImageJ; histograms were calculated using OriginPro 9.0). Mean diameter and sample size (N) are shown on the Figure.

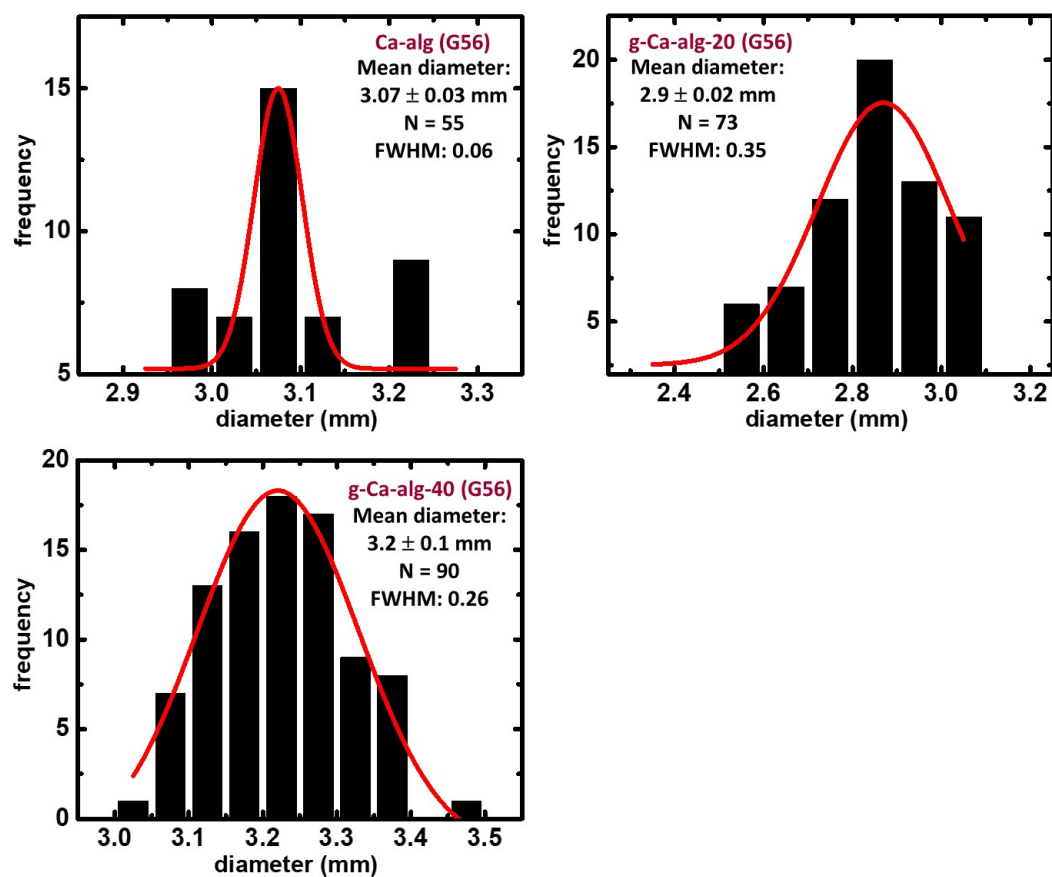


Figure S2. Size distributions of Ca-alginate and g-Ca-alginate (G56) aerogels with different LA/-OH molar ratios, as indicated (diameters measured with ImageJ; histograms were calculated using OriginPro 9.0). Mean diameter and sample size (N) are shown on the Figure.

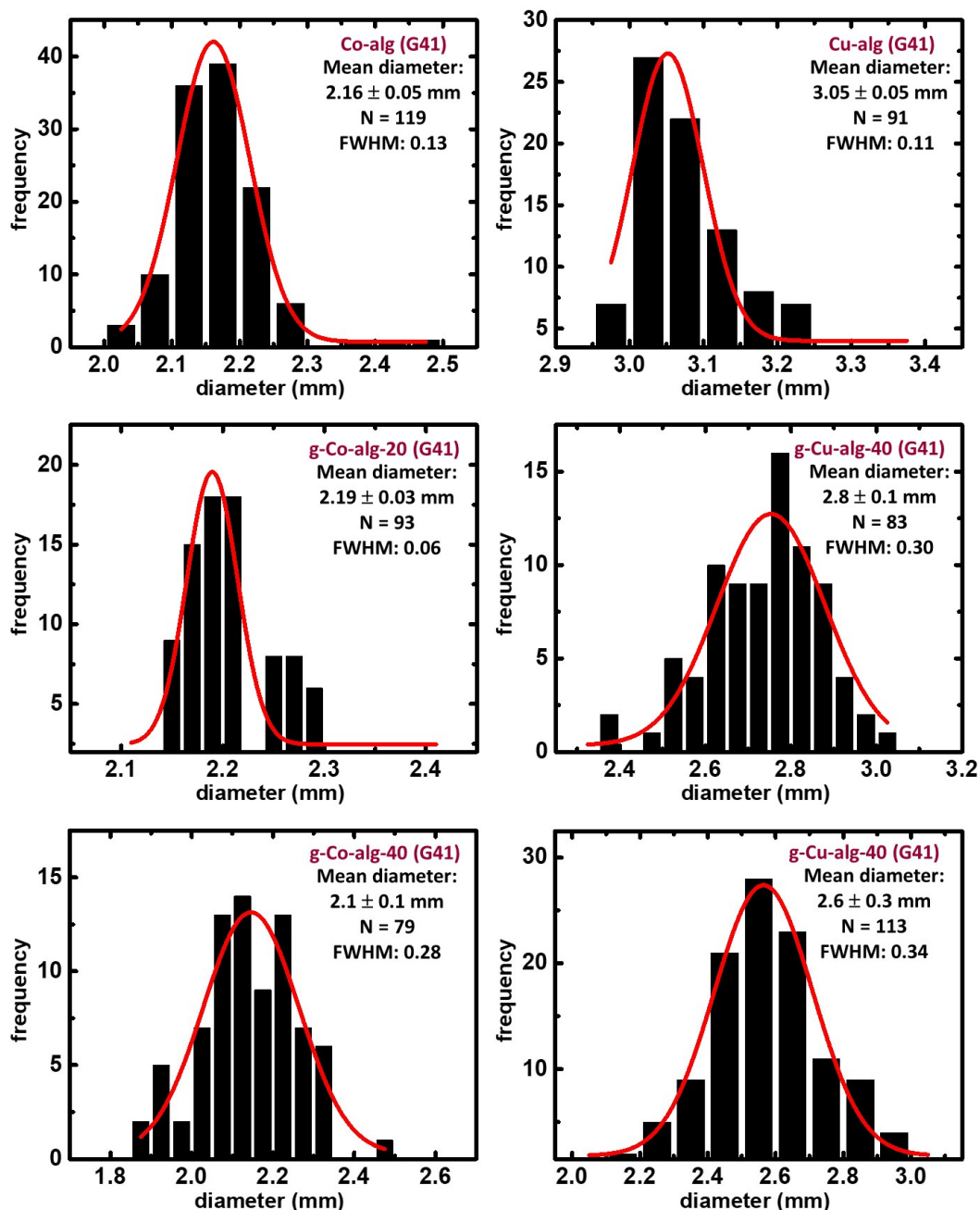


Figure S3. Size distributions of M-alginate and g-M-alginate (G41) aerogels with different LA/-OH molar ratios, as indicated (diameters measured with ImageJ; histograms were calculated using OriginPro 9.0). Mean diameter and sample size (N) are shown on the Figure.

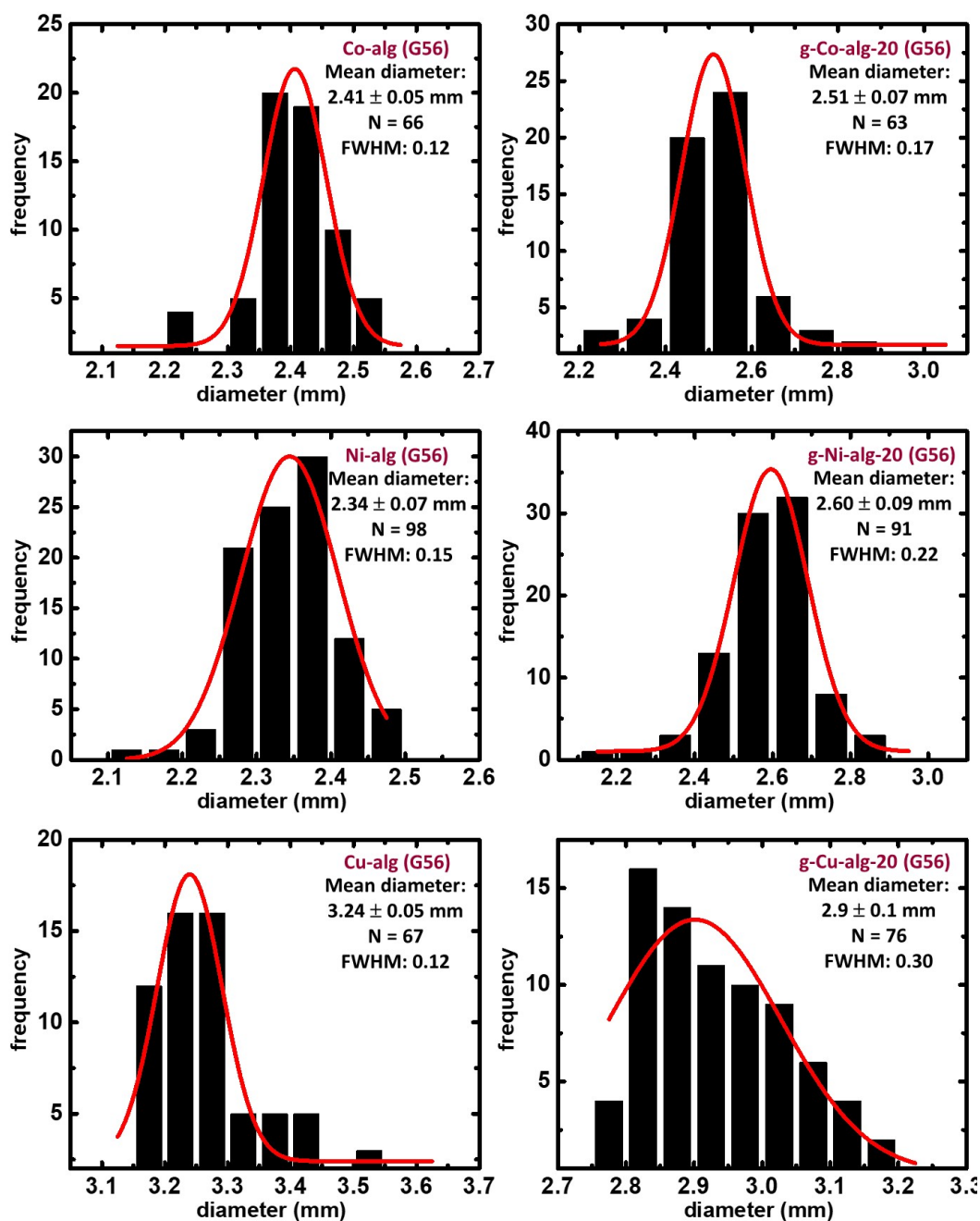


Figure S4. Size distributions of M-alginate and g-M-alginate (G56) aerogels with different LA/-OH molar ratios, as indicated (diameters measured with ImageJ; histograms were calculated using OriginPro 9.0). Mean diameter and sample size (N) are shown on the Figure.

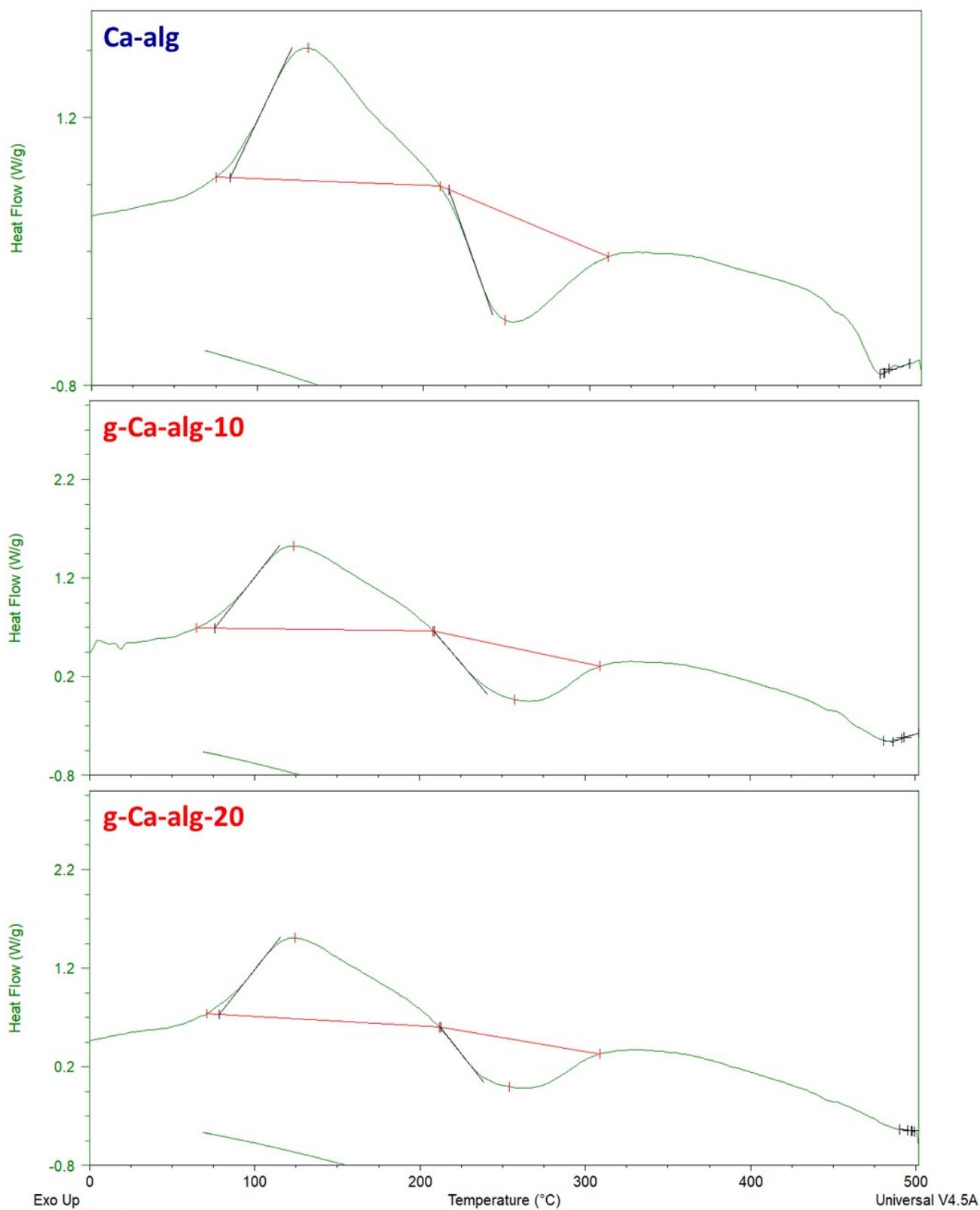


Figure S5. Cont.

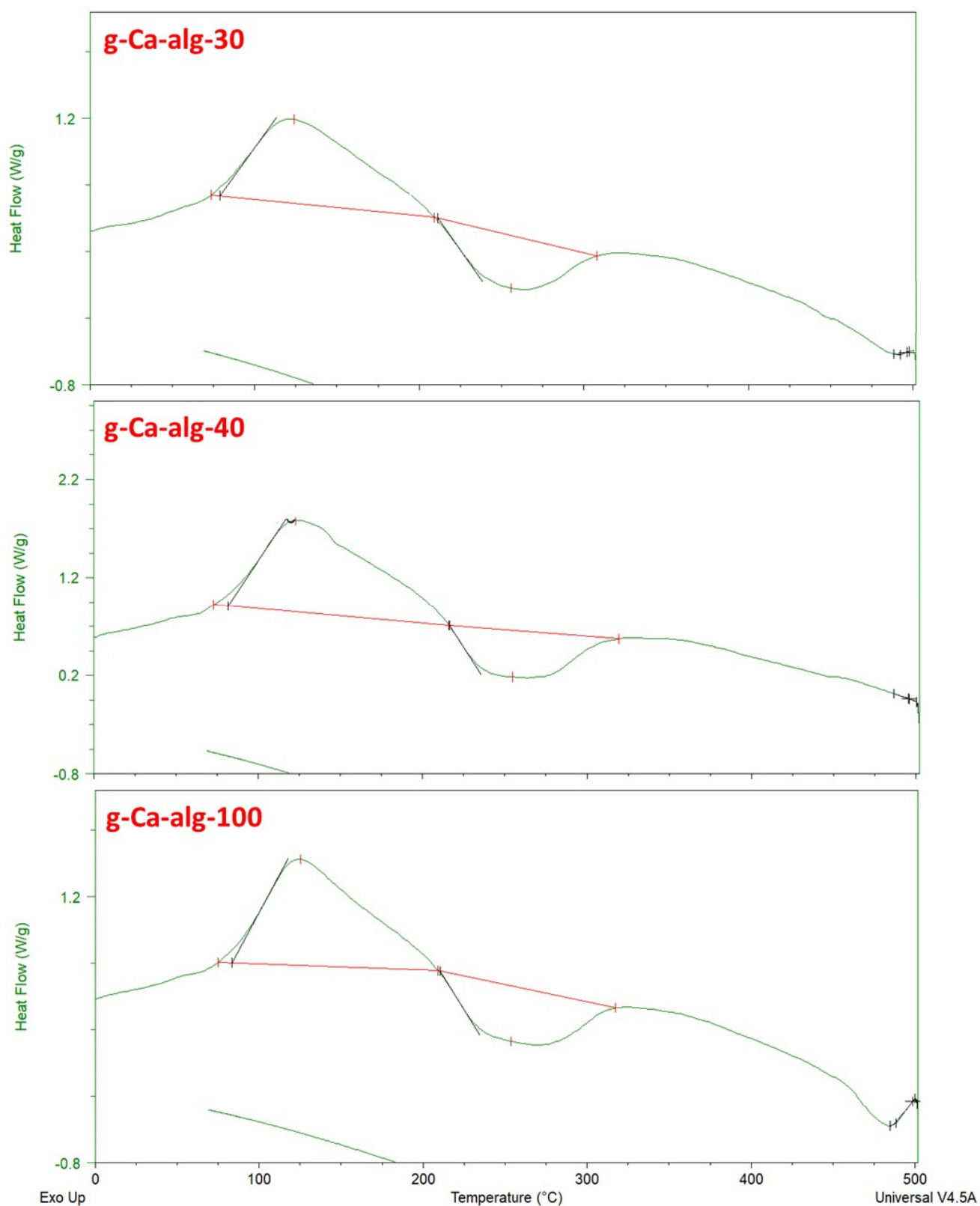


Figure S5. DSC thermograms for Ca-alginate and g-Ca-alginate (G41) aerogels with different LA/OH molar ratios, as indicated.

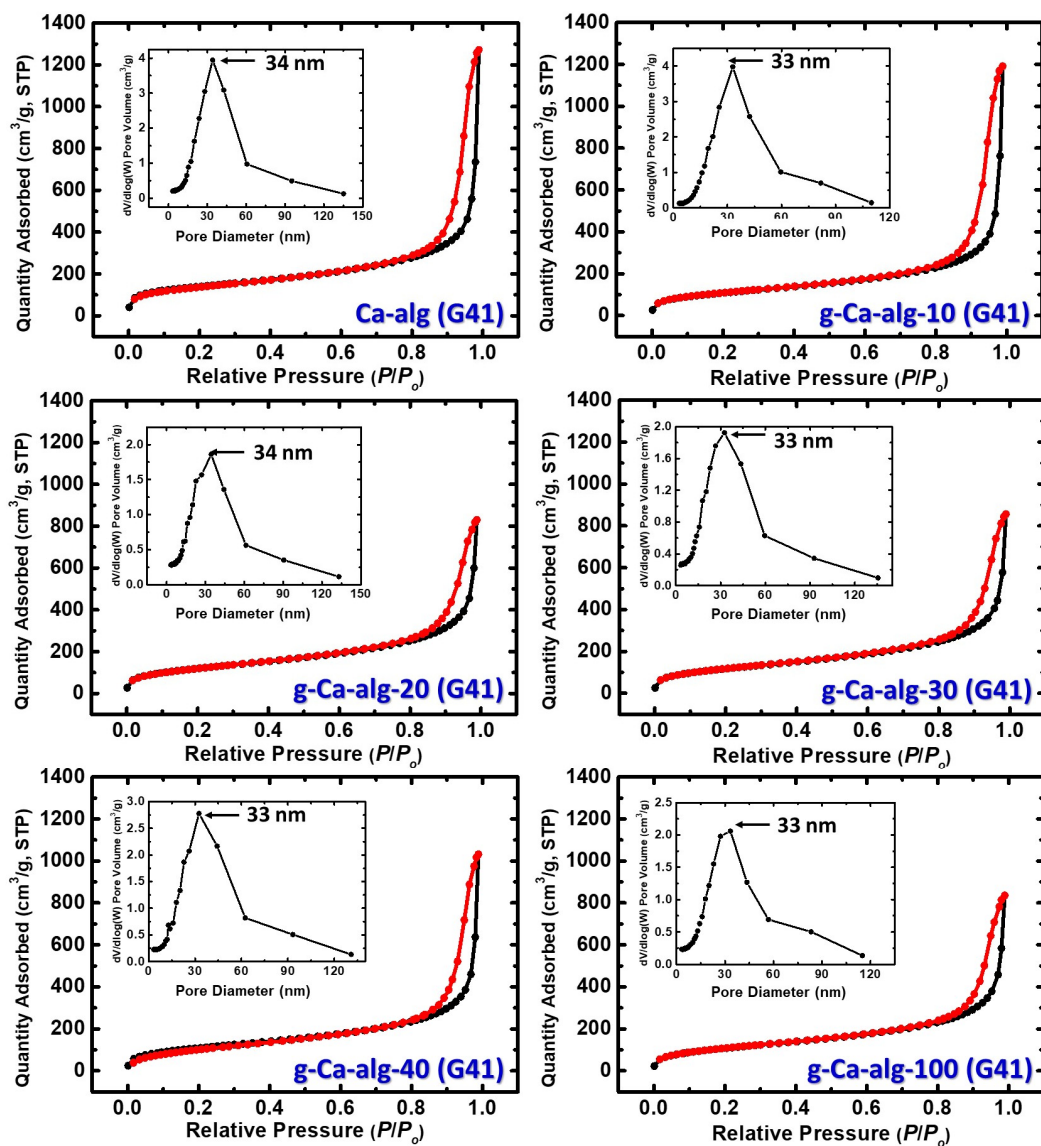


Figure S6. N₂-sorption diagrams of Ca-alginate and g-Ca-alginate (G41) aerogels, as indicated. Insets show pore size distributions by the BJH method.

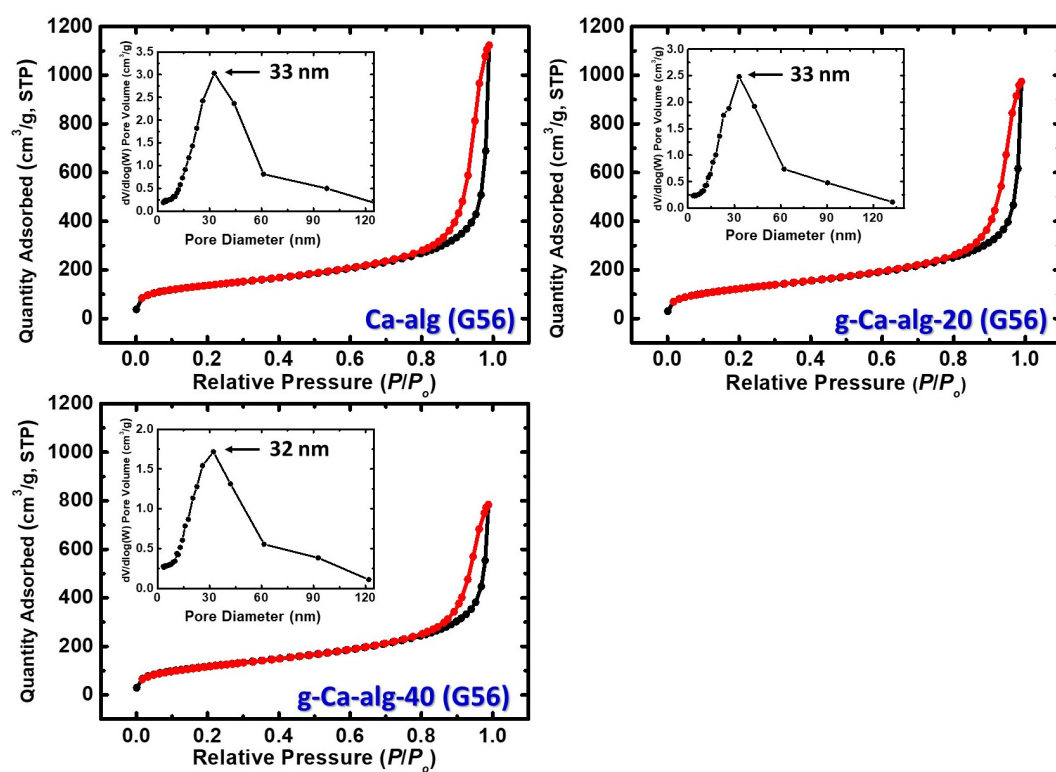


Figure S7. N₂-sorption diagrams of Ca-alginate and g-Ca-alginate (G56) aerogels, as indicated. Insets show pore size distributions by the BJH method.

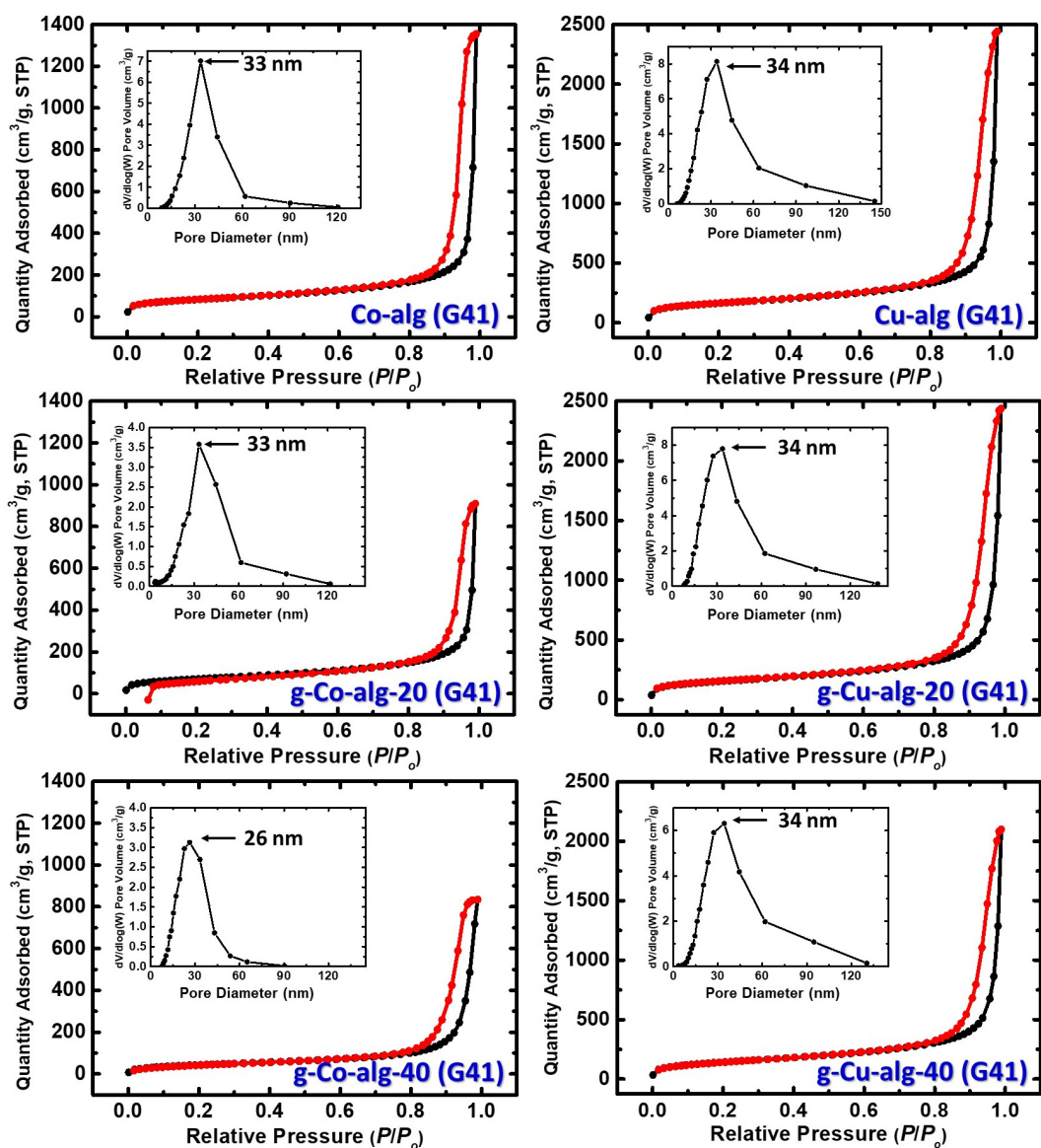


Figure S8. N₂-sorption diagrams of M-alginate and g-M-alginate (G41) aerogels, as indicated. Insets show pore size distributions by the BJH method.

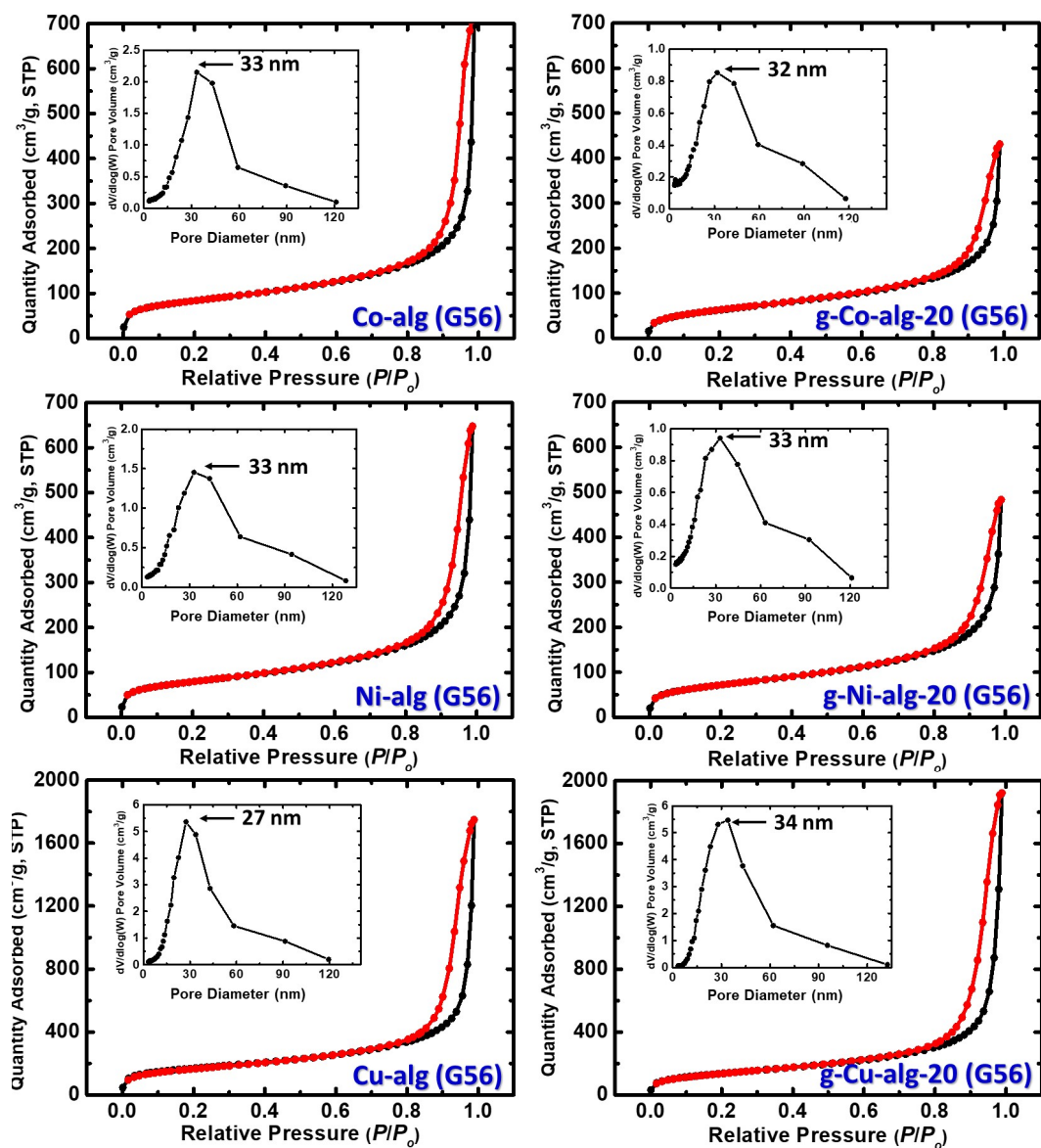


Figure S9. N_2 -sorption diagrams of M-alginate and g-M-alginate (G56) aerogels, as indicated. Insets show pore size distributions by the BJH method.