

Supplementary material

Fabrication of Graphitized Carbon Fibers from Fusible Lignin and Their Application in Supercapacitors

Linfei Zhou ¹, Xiangyu You ^{1,*}, Lingjie Wang ¹, Shijie Qi ¹, Ruichen Wang ¹, Yasumitsu Uraki ² and Huijie Zhang ^{1,*}

¹ College of Bioresources Chemical and Materials Engineering, Shaanxi University of Science & Technology, Xi'an 710021, China; linfeizhou@sust.edu.cn (L.Z.); 13177274057@163.com (L.W.); 210111015@sust.edu.cn (S.Q.); wang.ruichen@sust.edu.cn (R.W.)

² Research Faculty of Agriculture, Hokkaido University, Sapporo 060-8589, Japan; uraki@for.agr.hokudai.ac.jp

* Correspondence: xyyou@sust.edu.cn (X.Y.); hjzhang@sust.edu.cn (H.Z.)

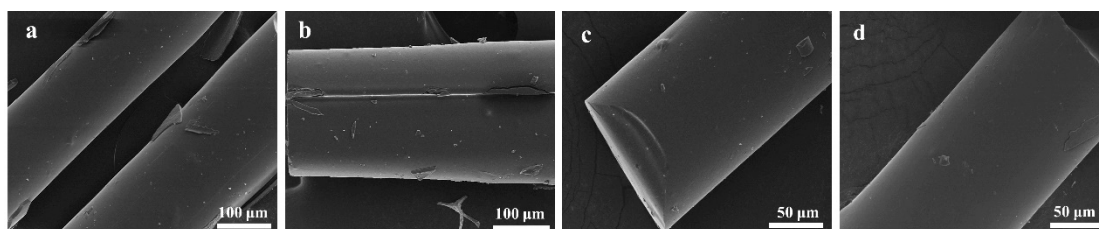


Figure S1. SEM images of LFs.

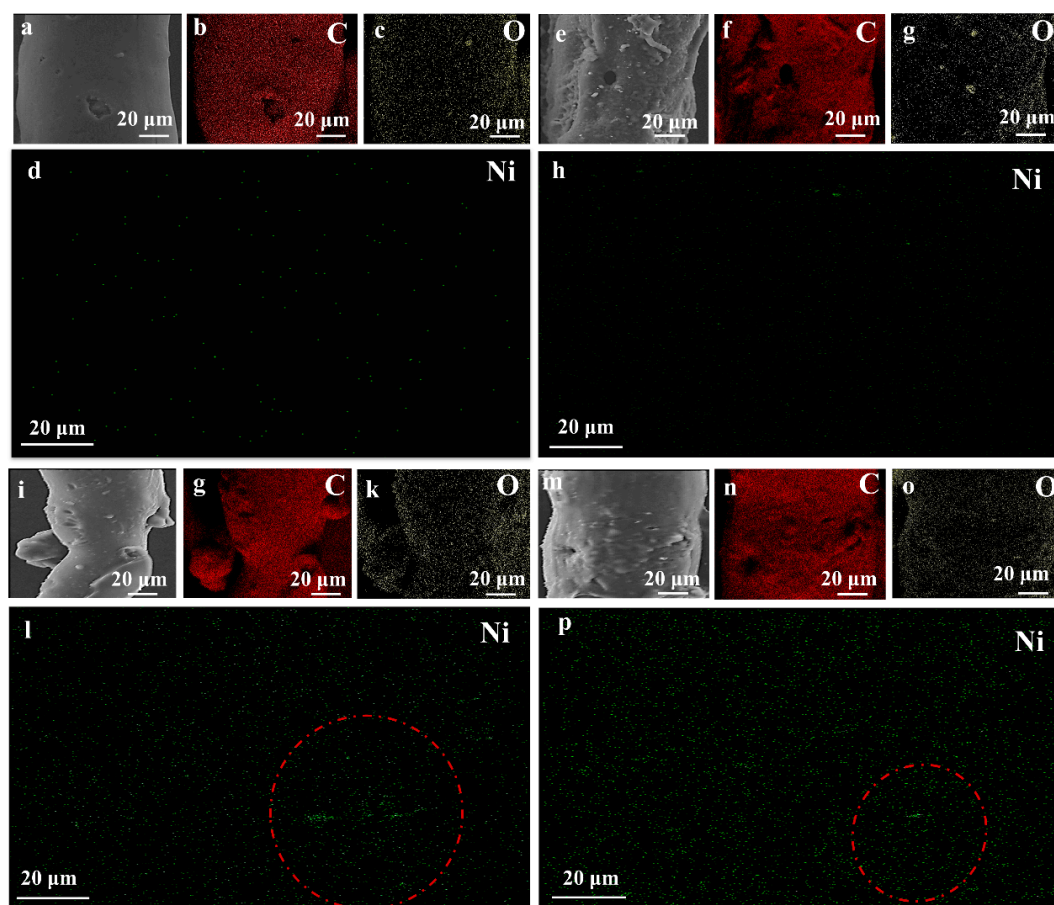


Figure S2. EDS mapping of LCFs, including SEM image of (a) LCF-0, (e) LCF-0.2, (i) LCF-0.4, and (m) LCF-0.6.

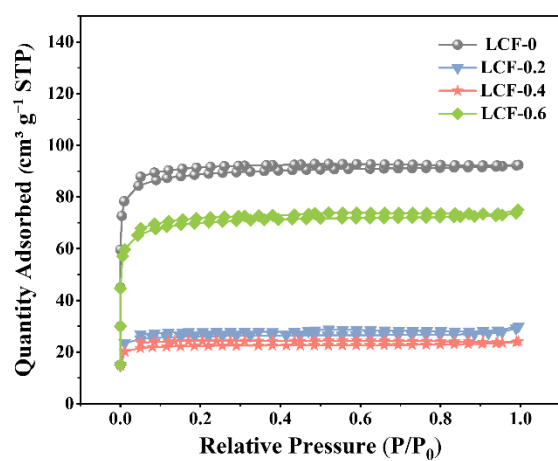


Figure S3. N_2 adsorption/desorption isotherms.

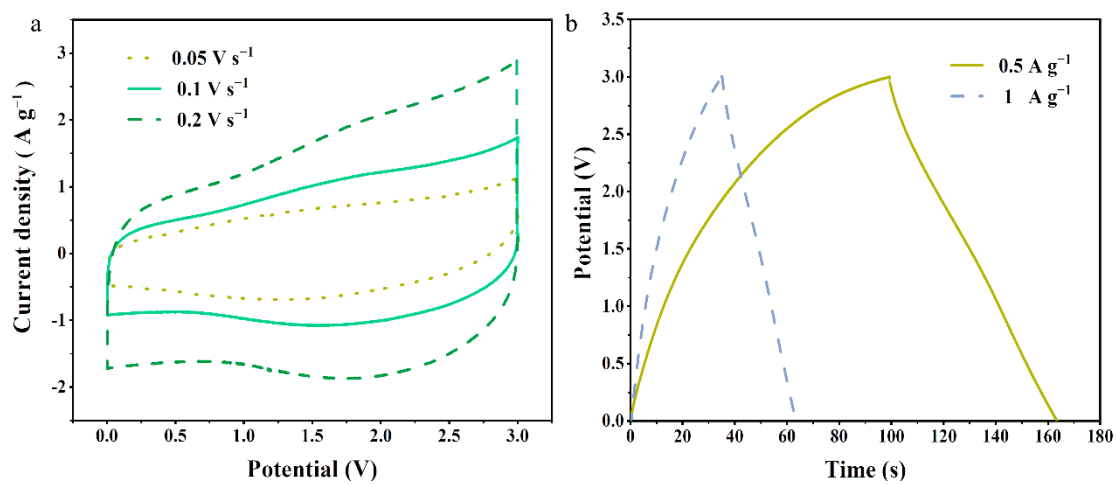


Figure S4. (a) CV for LCF-0.4 with different scan rate; (b) GCD curves for LCF-0.4 at different current density.