

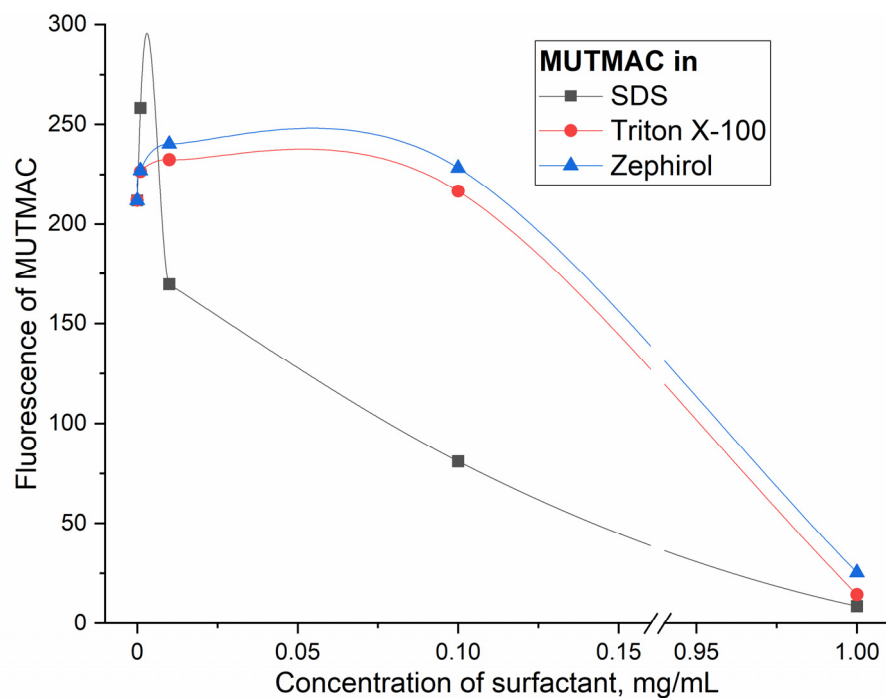
Specific FRET probes sensitive to chitosan-based polymeric micelles formation, drug-loading and fine structural features

Igor D. Zlotnikov, Ivan V. Savchenko and Elena V. Kudryashova *

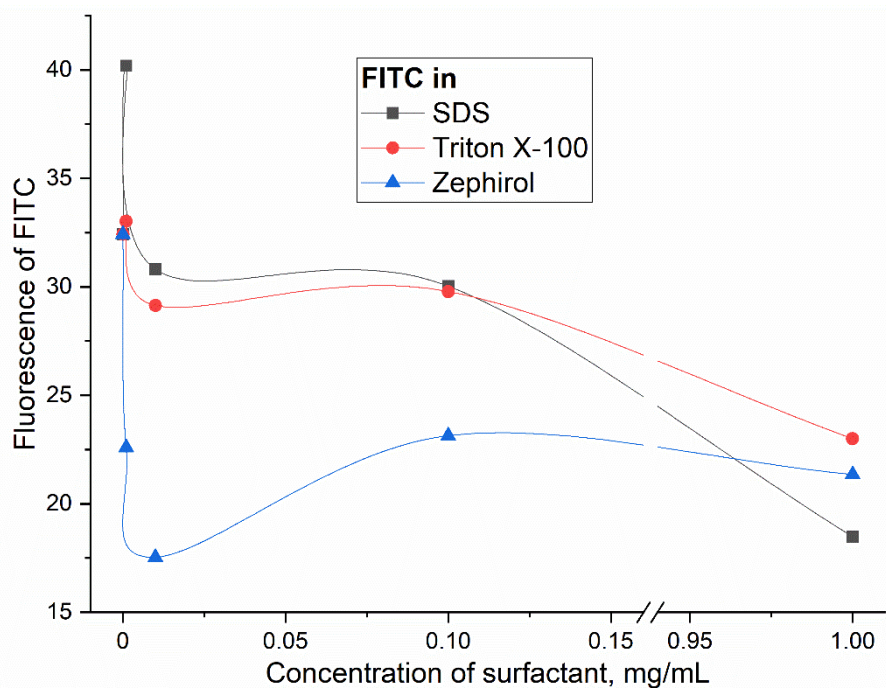
Faculty of Chemistry, Lomonosov Moscow State University, Leninskie Gory, 1/3, 119991 Moscow, Russia

* Correspondence: helenakoudriachova@yandex.ru

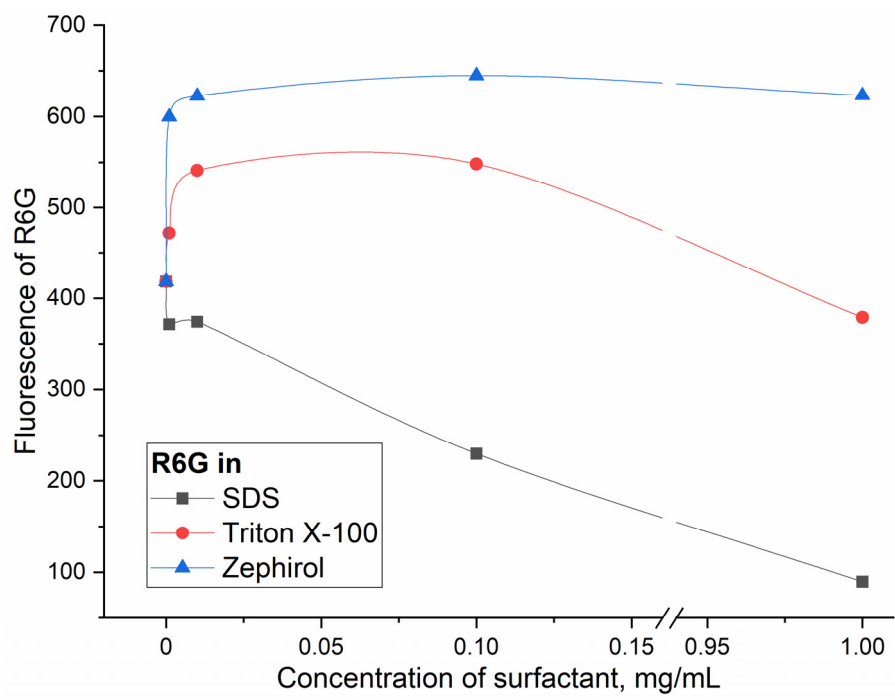
Figure S1. The dependence of the fluorescence emission maximum intensity on surfactant concentration: (a) MUTMAC, (b) FITC, (c) R6G. Fluorescence emission spectra of (d) FITC, (e) R6G in free form and in micellar form. Graphs were used to determine the degree of incorporation of fluorophore into micelles.



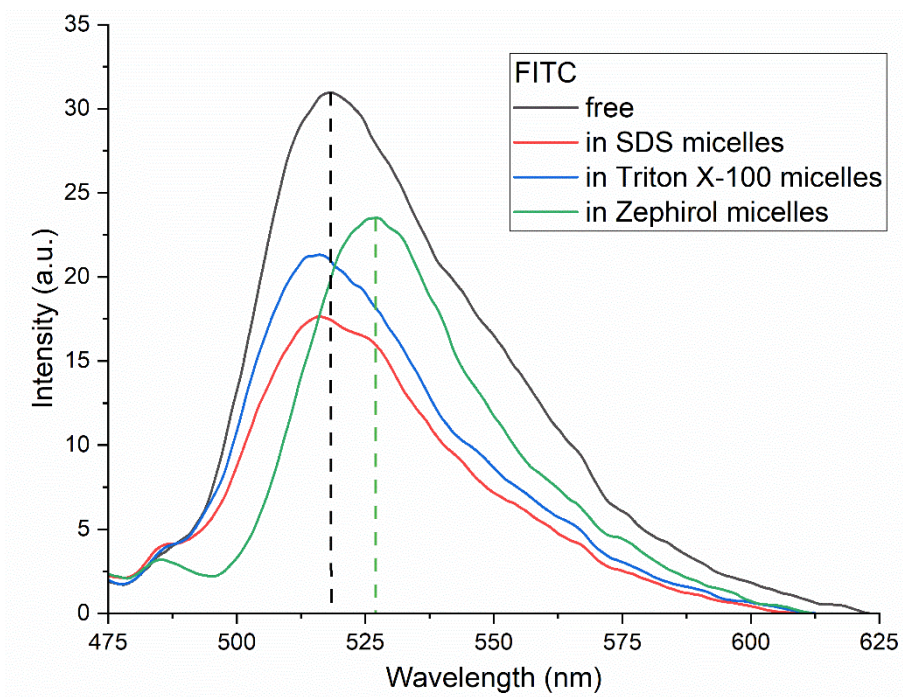
(a)



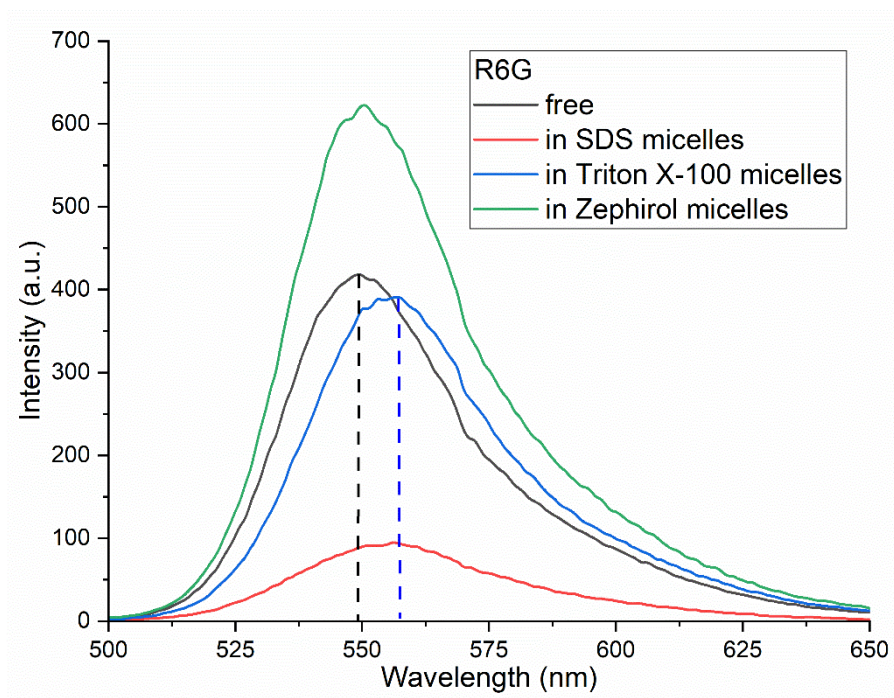
(b)



(c)



(d)



(e)

Figure S2. ^1H NMR of polymeric micellar systems with S-H or S-S bonds with R6G. Chit5-LA was studied as self-assembled polymer. As a control without S-H bonds Chit5-OA was used. D_2O . $T = 25^\circ\text{C}$.

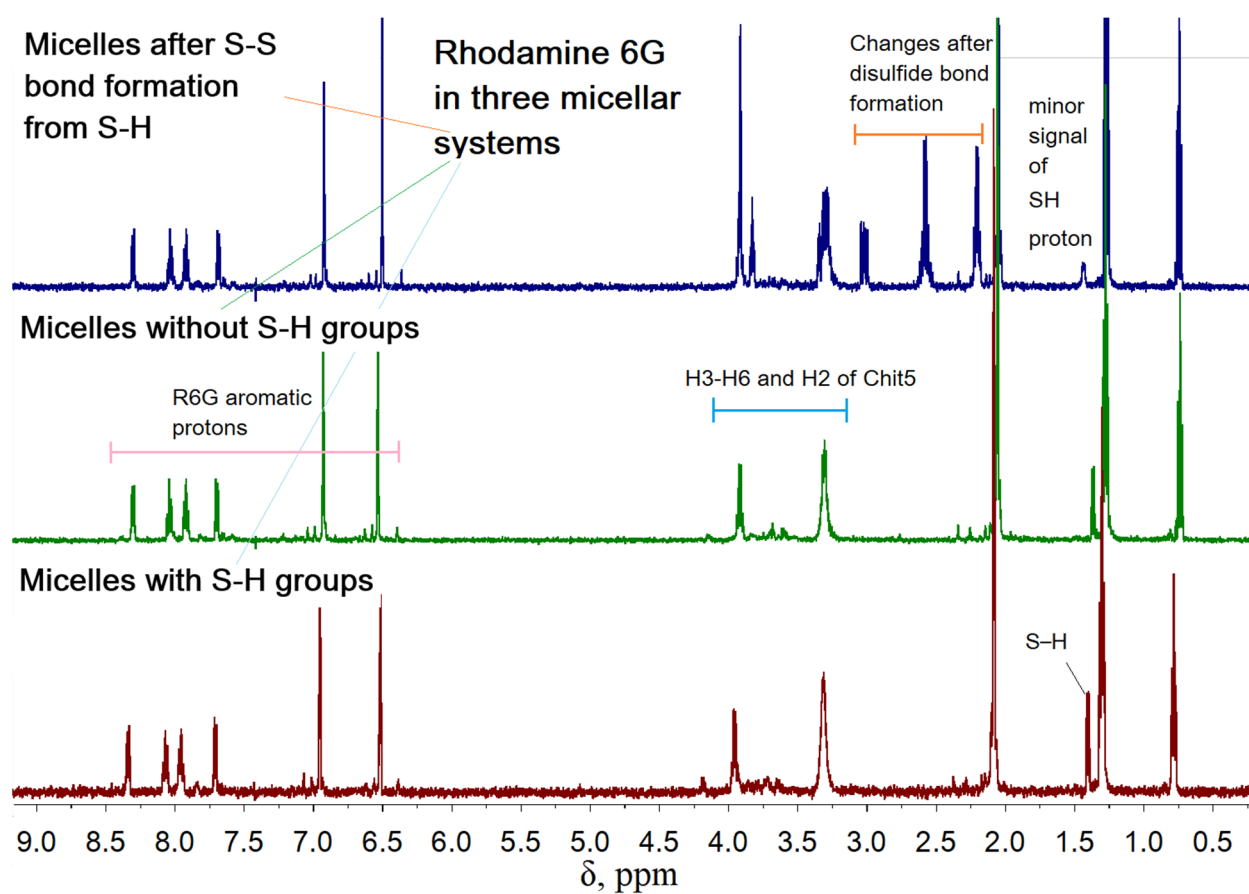


Figure S3. (a) AFM image of Chit5-LA particles and (b) the corresponding section along the blue line in height, respectively.

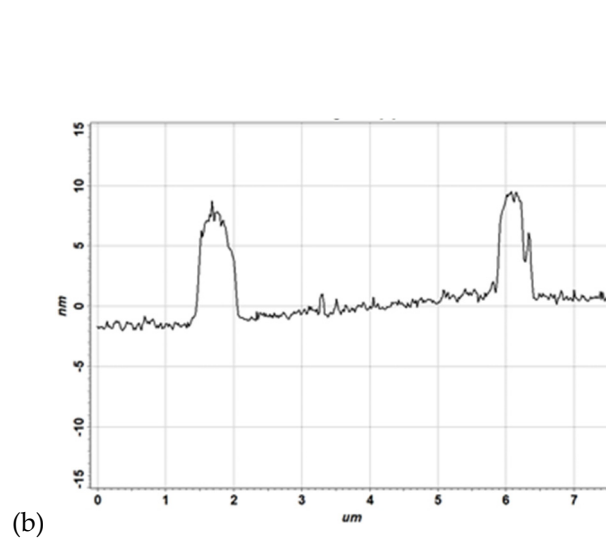
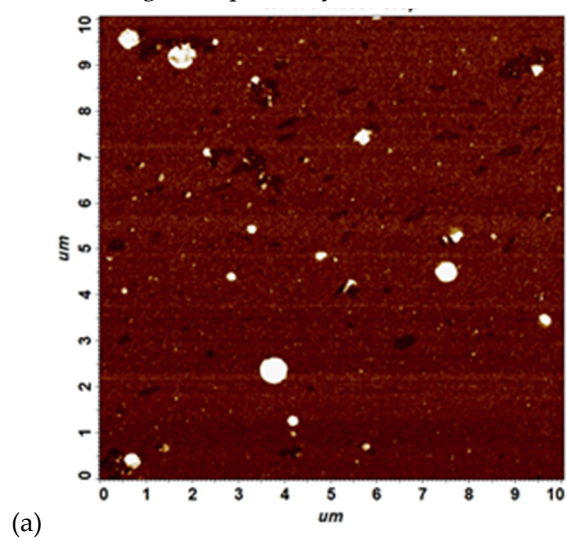


Figure S4. Fluorescence images of A549 after 60 min incubation with Rhodamine 6G 1 $\mu\text{g}/\text{mL}$ free or Rhodamine 6G in micelles (S-S stitched). R6G red, DAPI blue, and FITC-labelled micelles channels and merge are shown. R6G/micelle 1:1 w/w. The scale segment is 100 μm .

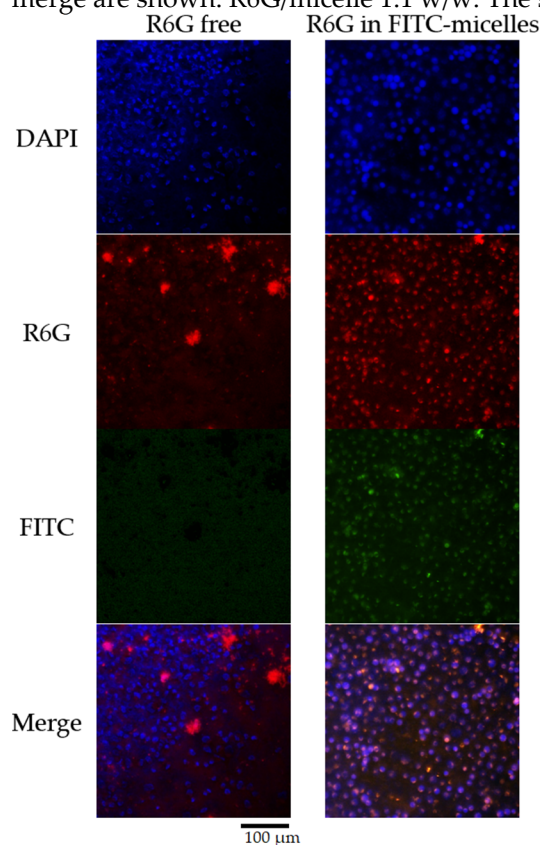


Figure S5. Flow cytometry assay of R6G-loaded micelles.

