

Figure S1: Length distribution of unigenes

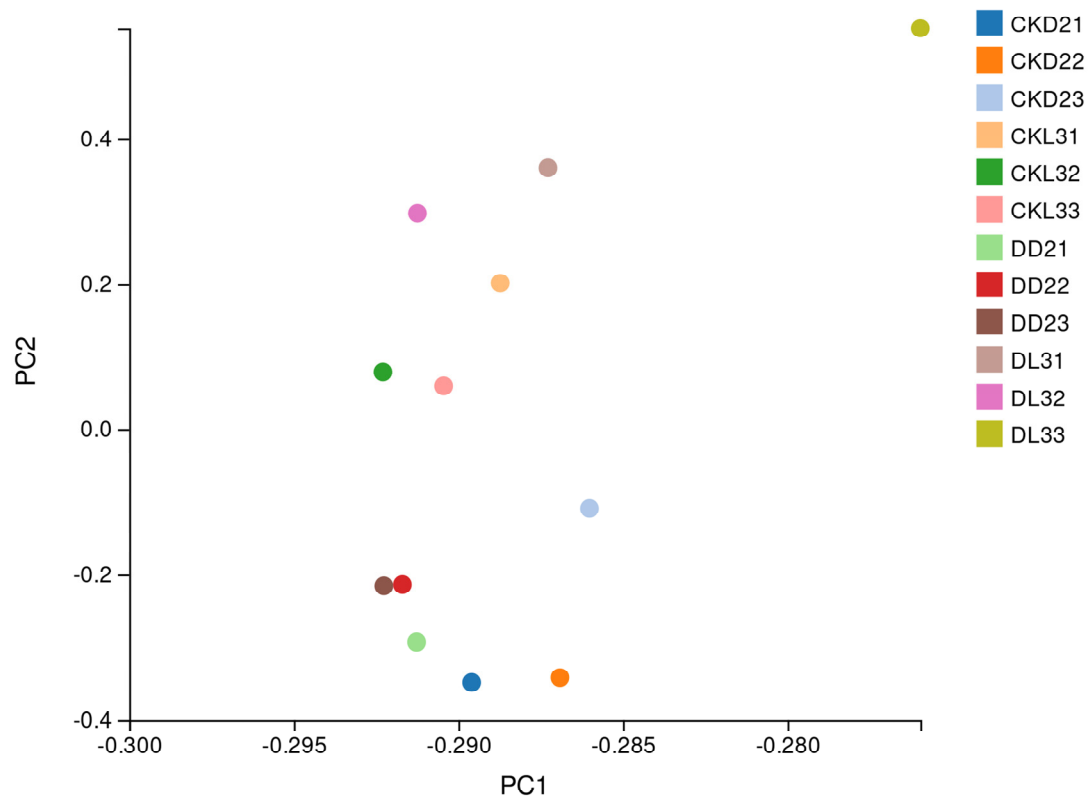


Figure S2: Principal component analysis among the 12 samples of *Avena sativa*

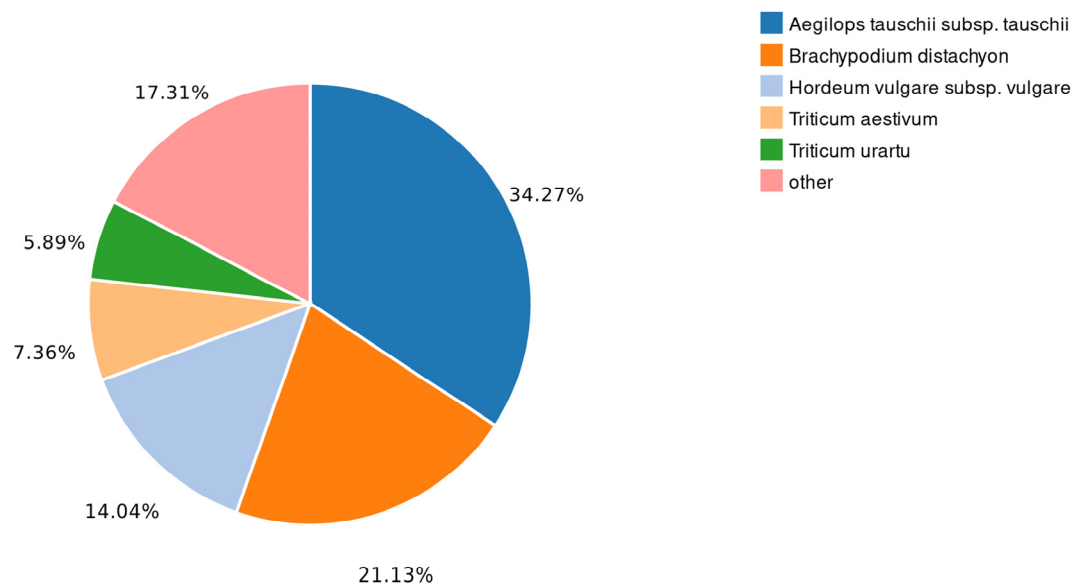


Figure S3: Similarities of *Avena sativa* to other species

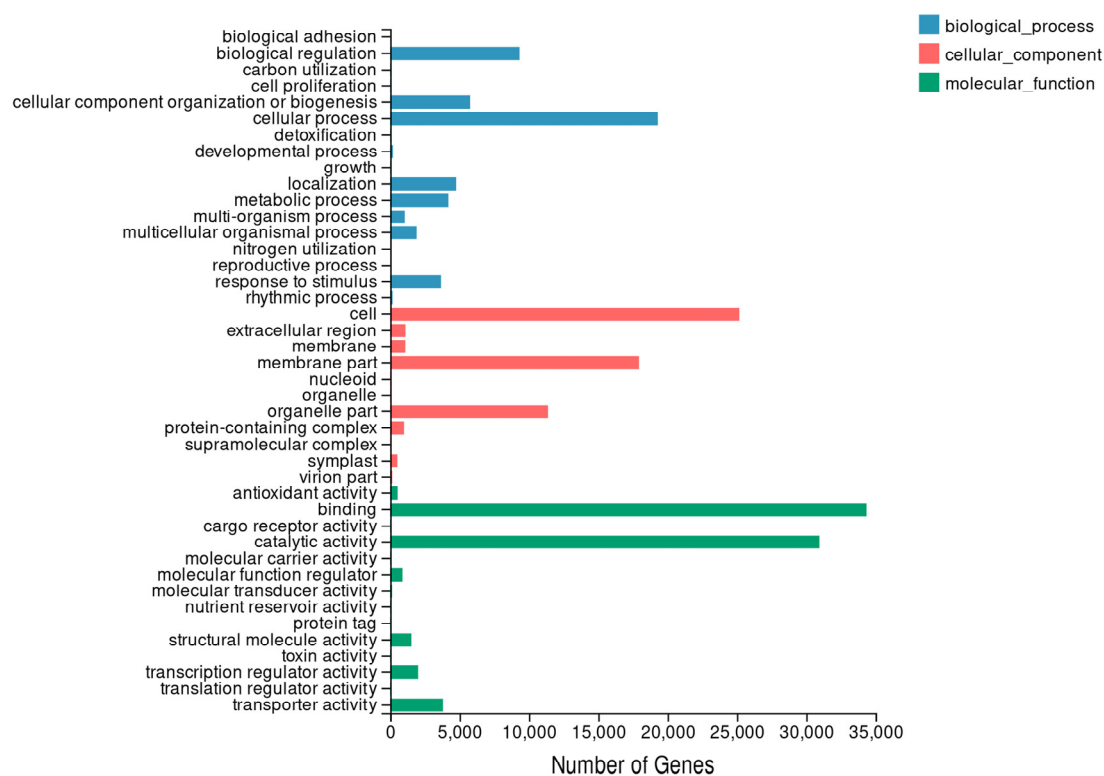


Figure S4: Annotation of the assembled unigenes in *Avena sativa* transcriptome in GO database

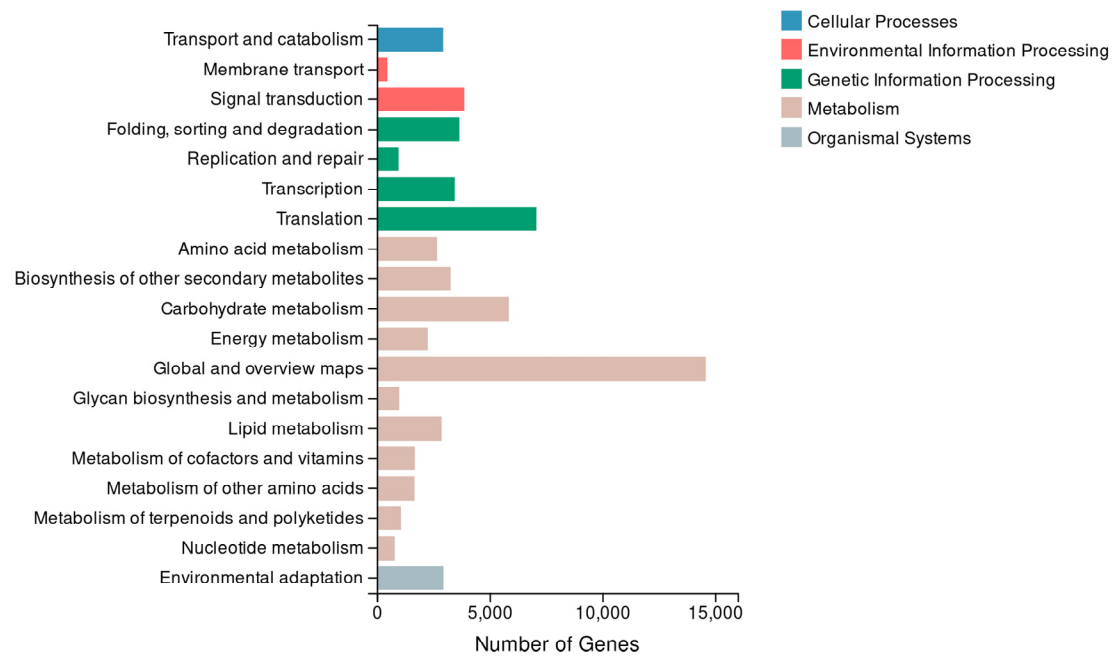


Figure S5: Annotation of the assembled unigenes in *Avena sativa* transcriptome in KEGG database

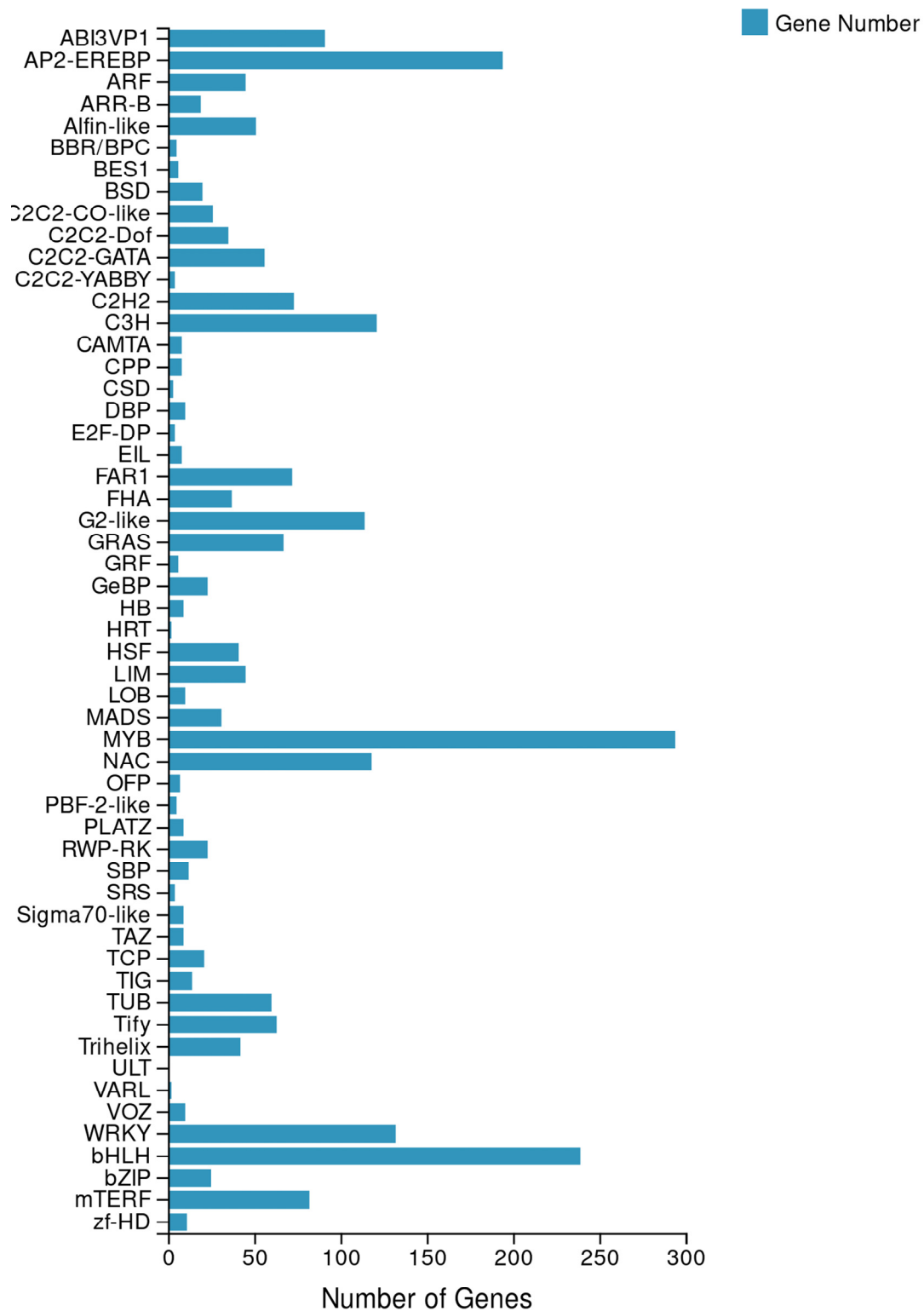


Figure S6: Annotation of the assembled unigenes in *Avena sativa* transcriptome in TF database

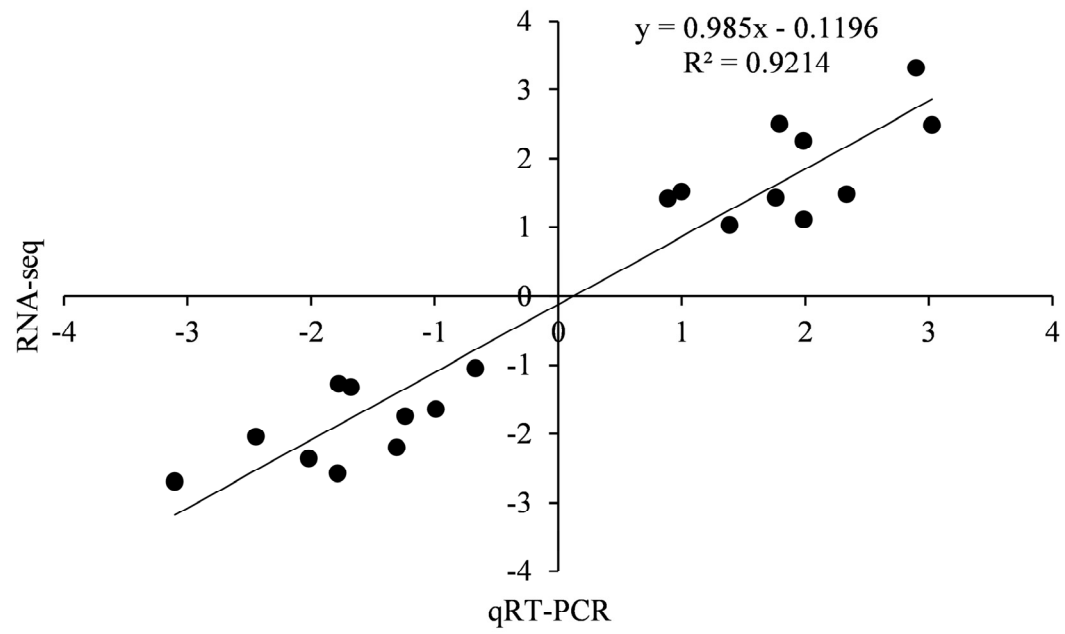


Figure S7: The relative expression levels of 20 DEGs identified in the comparison between RNA-Seq and qRT-PCR