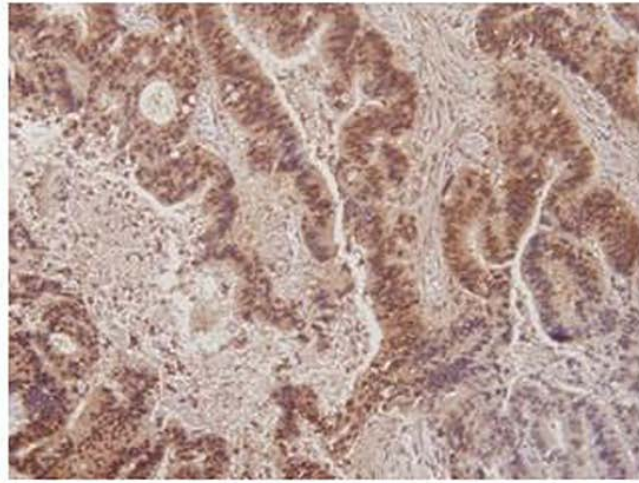
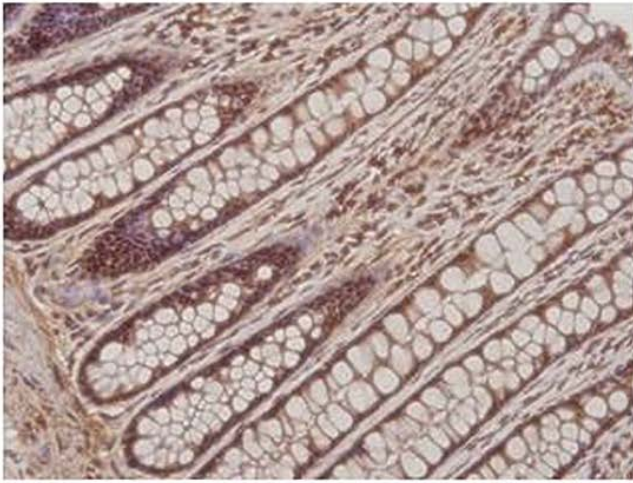
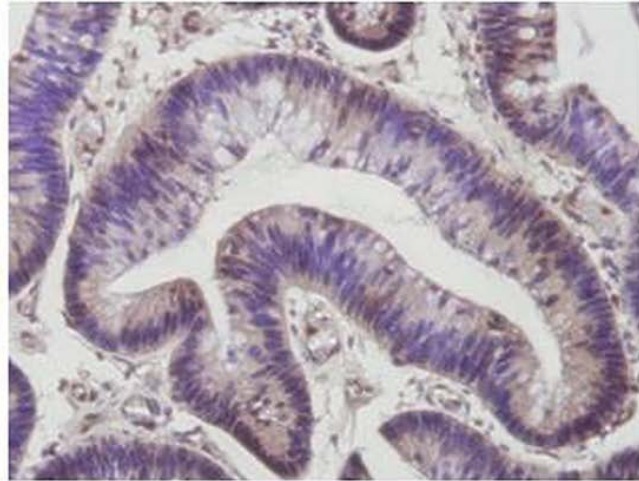
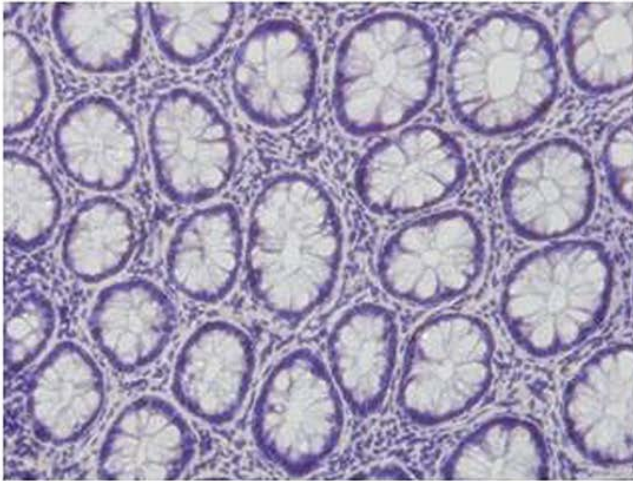


NAT**CRC****#460****#391**

Supplementary figure S1

Representative IHC stainings of CBX8 in patients #460 and #391 showed high level of CBX8 (#460) and low CBX8 (#391) in NAT and CRC specimens (Magnification: 40X). As shown by sample #460, crypt epithelial cells and stroma cells in NAT specimens are able to express CBX8.