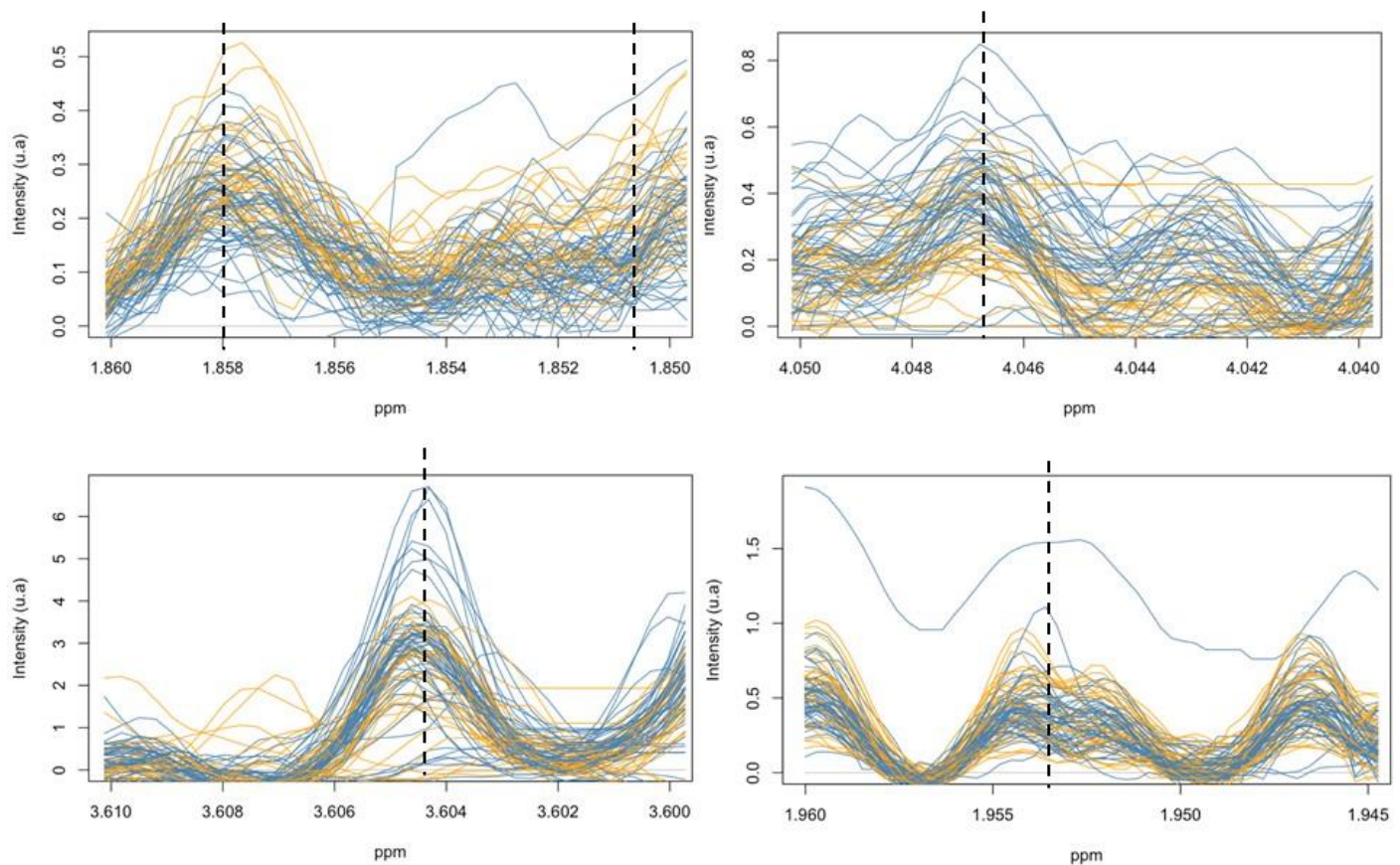


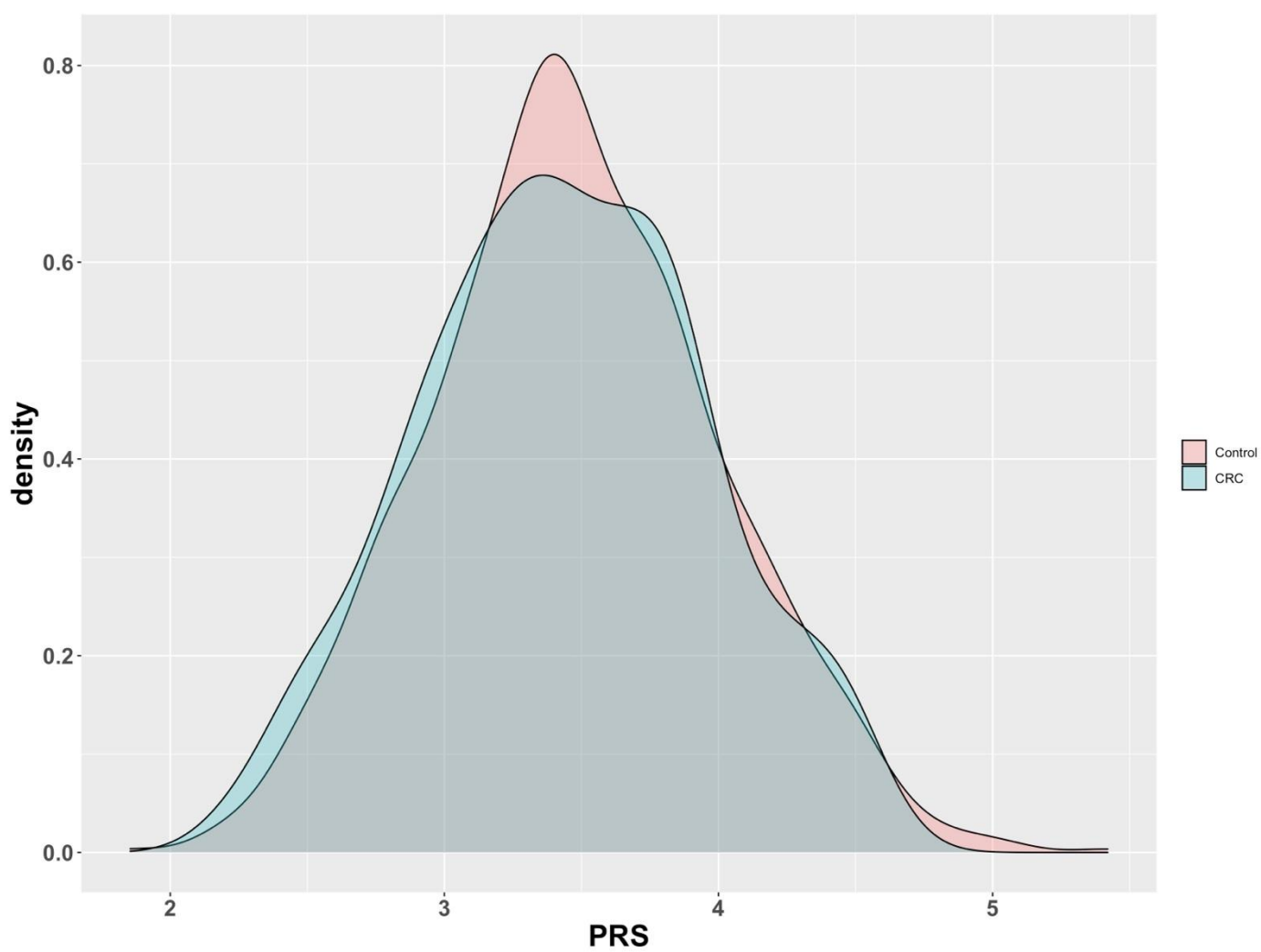
## Supplementary Material

**Supplementary Table S1.** The clinicohistopathological data for the 467 CRC patients used for PRS analysis.

n = 467	
Age, Mean (SD)	64.1 (11.7)
Gender, Male (%)	272 (58.2%)
BMI, Mean (SD)	24.4 (4.2)
Grade, n (%)	
I Well differentiated	19 (5.2%)
II Moderate differentiated	320 (87.9%)
III Poorly differentiated	25 (6.9%)
Stage, n (%)	
I	94 (26.1%)
II	106 (29.4%)
III	120 (33.3%)
IV	40 (11.1%)



**Figure S1.** Spectral regions of the top 5 contributors of the PLS-DA loading plot. Dashed lines denote the center of the binned signal. Note the differences in absolute intensity.



**Figure S2.** PRS of patients with CRC and controls based on the East Asian population.