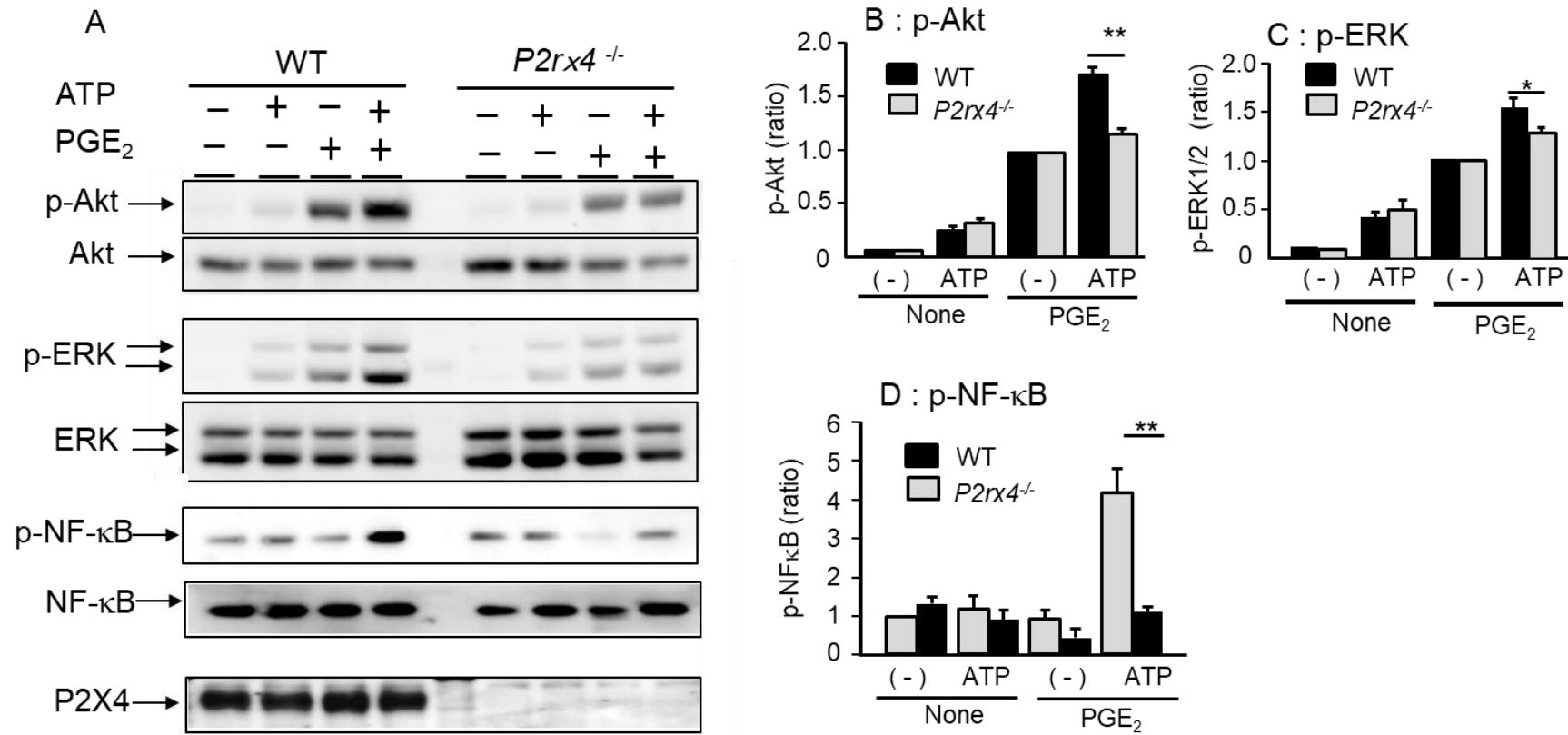


Supplemental Figure S1

Expression of mRNAs for EP receptor subtypes in BMMC obtained from wild type (WT) and P2X4 receptor deficient (*P2rx4*^{-/-}) mice. EP₁, EP₂, EP₃, EP₄ and P2X4 receptor mRNA expression were examined by quantitative RT-PCR. Data were normalized to GAPDH mRNA levels. Values are shown as mean \pm SEM (n = 3).



Supplemental Figure S2

Effects of co-stimulation of ATP and PGE₂ on the phosphorylation of ERK1/2, Akt, and NF-κB. (A) BMMCs prepared from WT (left) and *P2rx4*^{-/-} mice (right) were stimulated with vehicle or PGE₂ (0.1 μM) with or without ATP (100 μM) for 5 min to evaluate phospho-NF-κB or for 20 min to examine phospho-Akt and phospho-ERK1/2. Cell lysates were subjected to western blot analysis. P2X4R protein was examined with anti-P2X4R antibody. (B,C,D) The densitometry value of protein bands of phospho-Akt (B), phospho-ERK 1/2 (C) are shown as relative intensity as 1 for the results obtained with PGE₂ alone. The densitometry values of the protein band of phospho-NF-κB (D) were shown as relative intensity as 1 for the results obtained in unstimulated cells (none). Data are shown as mean ± SEM (n = 3). *P < 0.05, **P < 0.01.