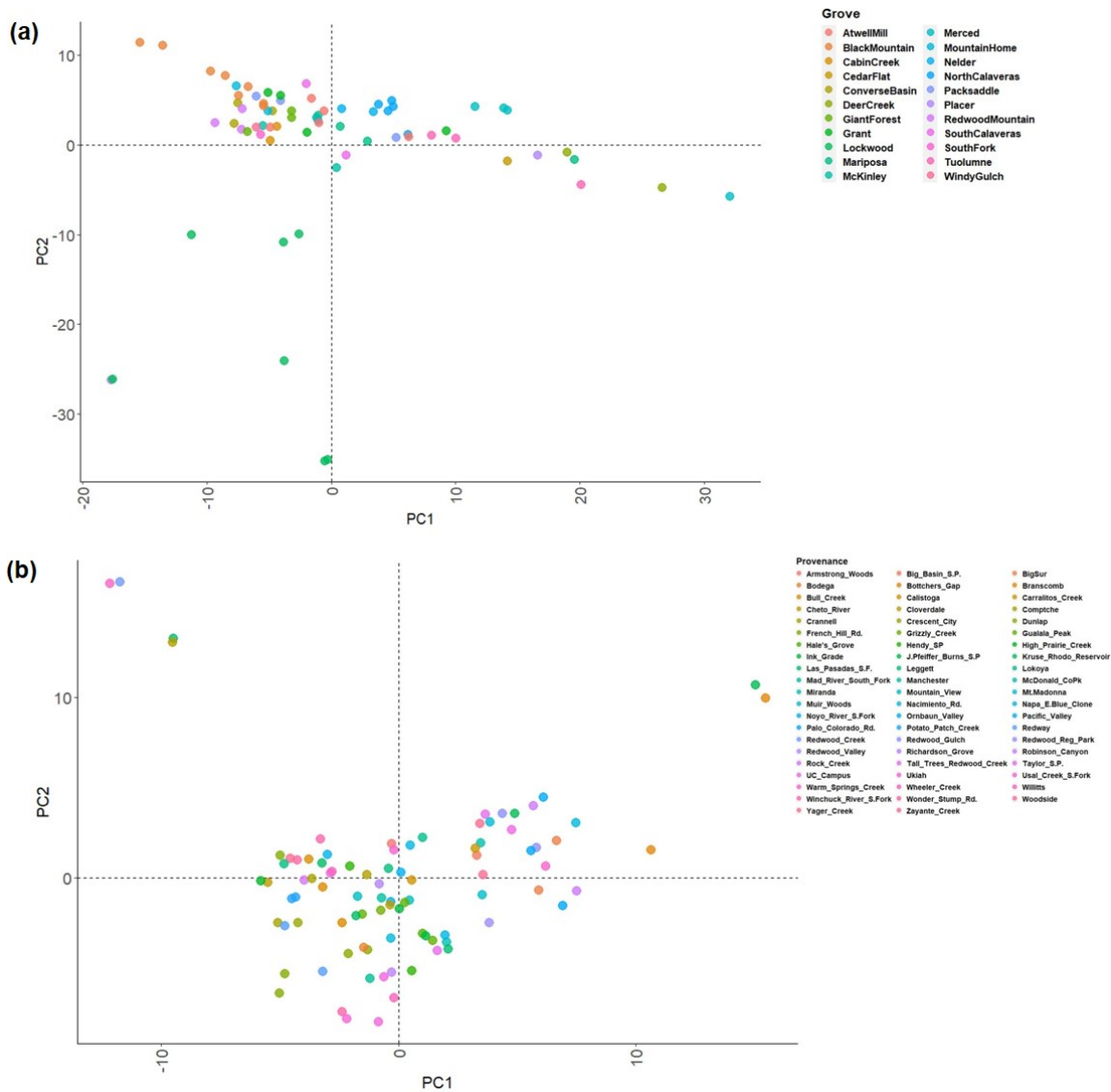


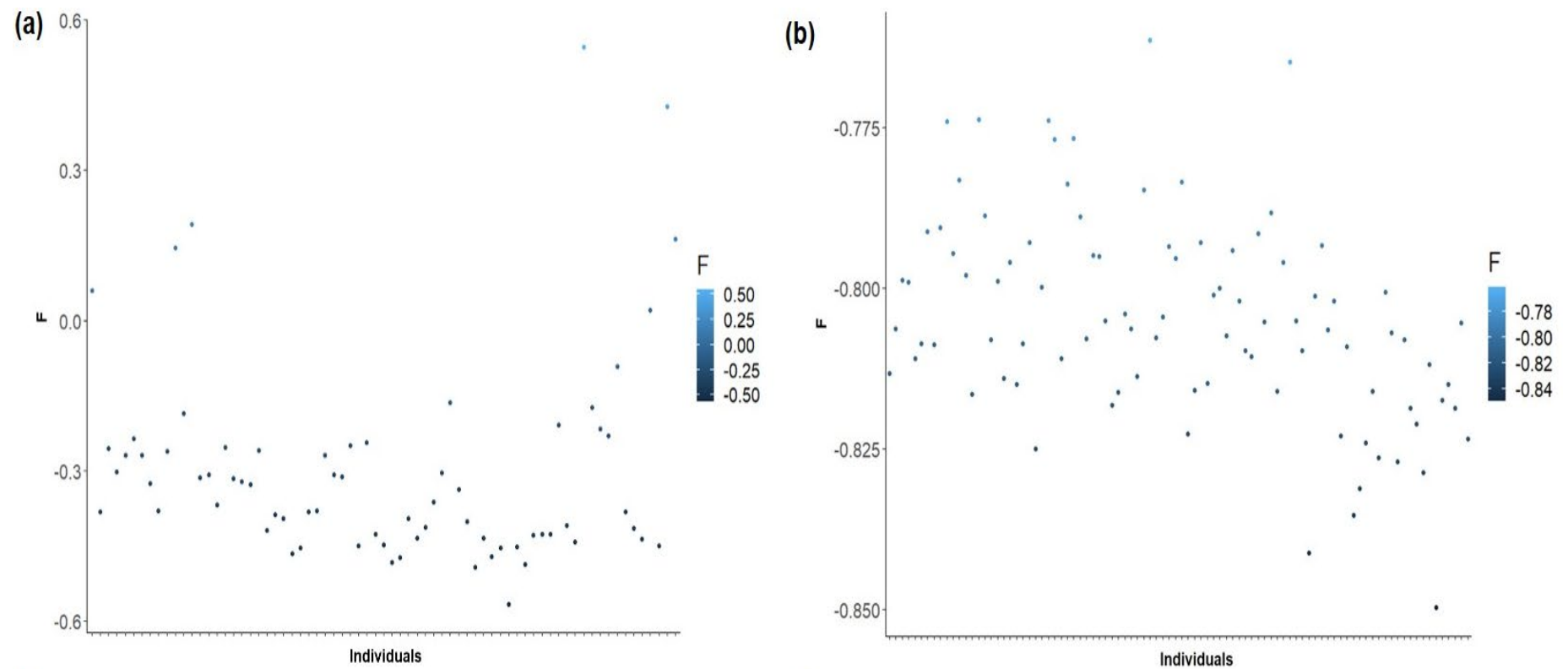
Supplementary Materials

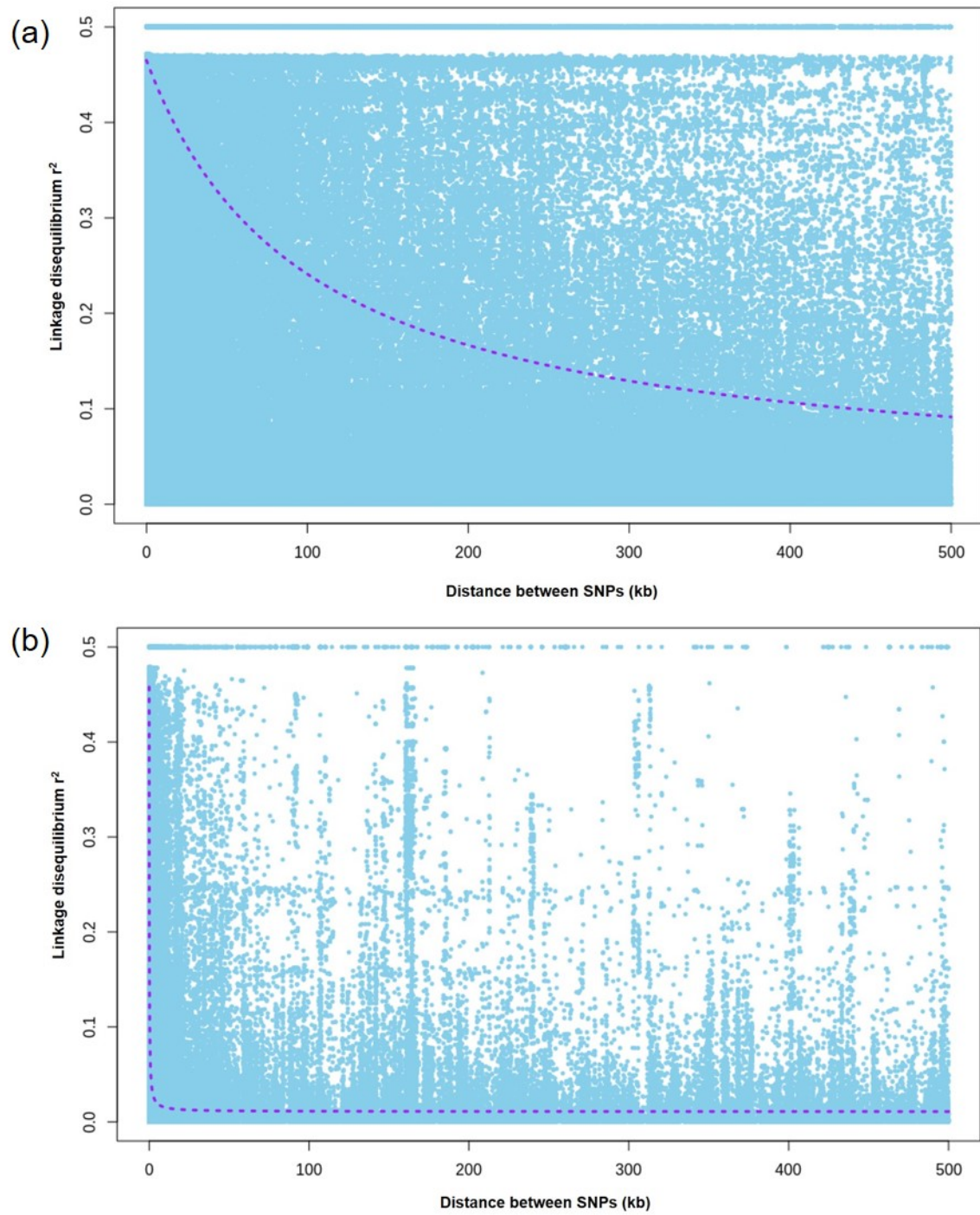
Selective sweeps and polygenic adaptation drive local adaptation along moisture and temperature gradients in natural populations of coast redwood and giant sequoia

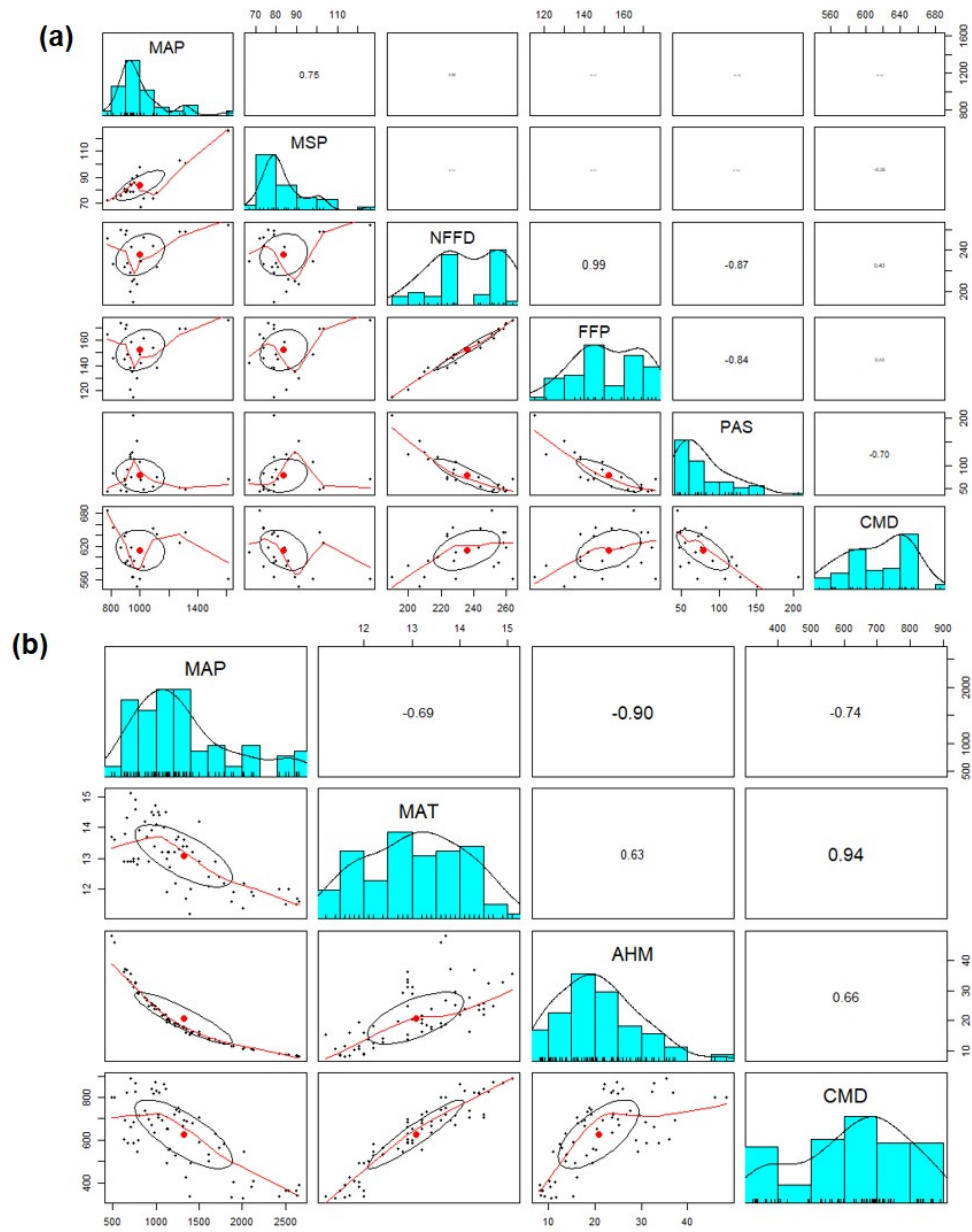
Amanda R De La Torre, Manoj K. Sekhwal, David B. Neale

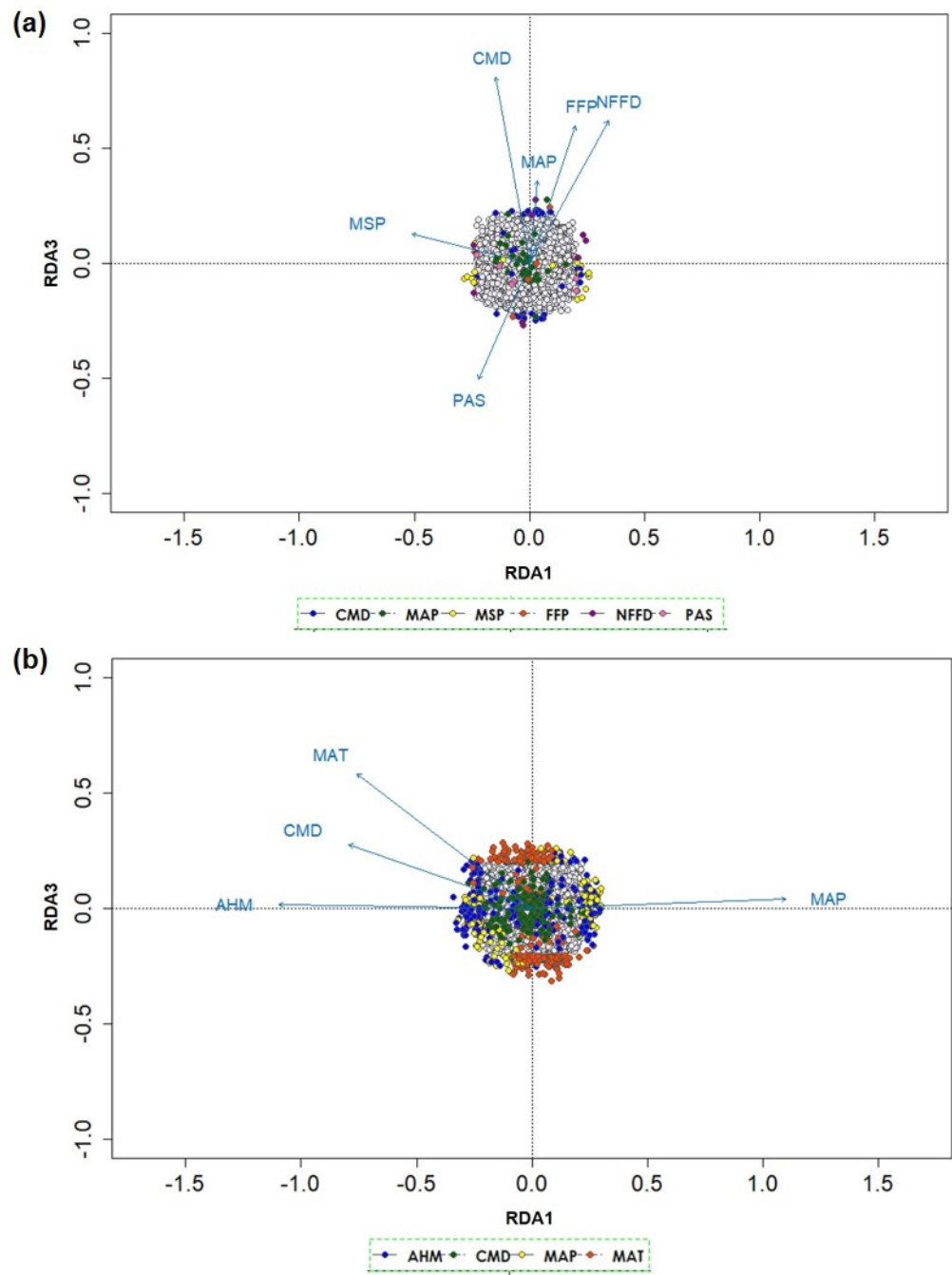


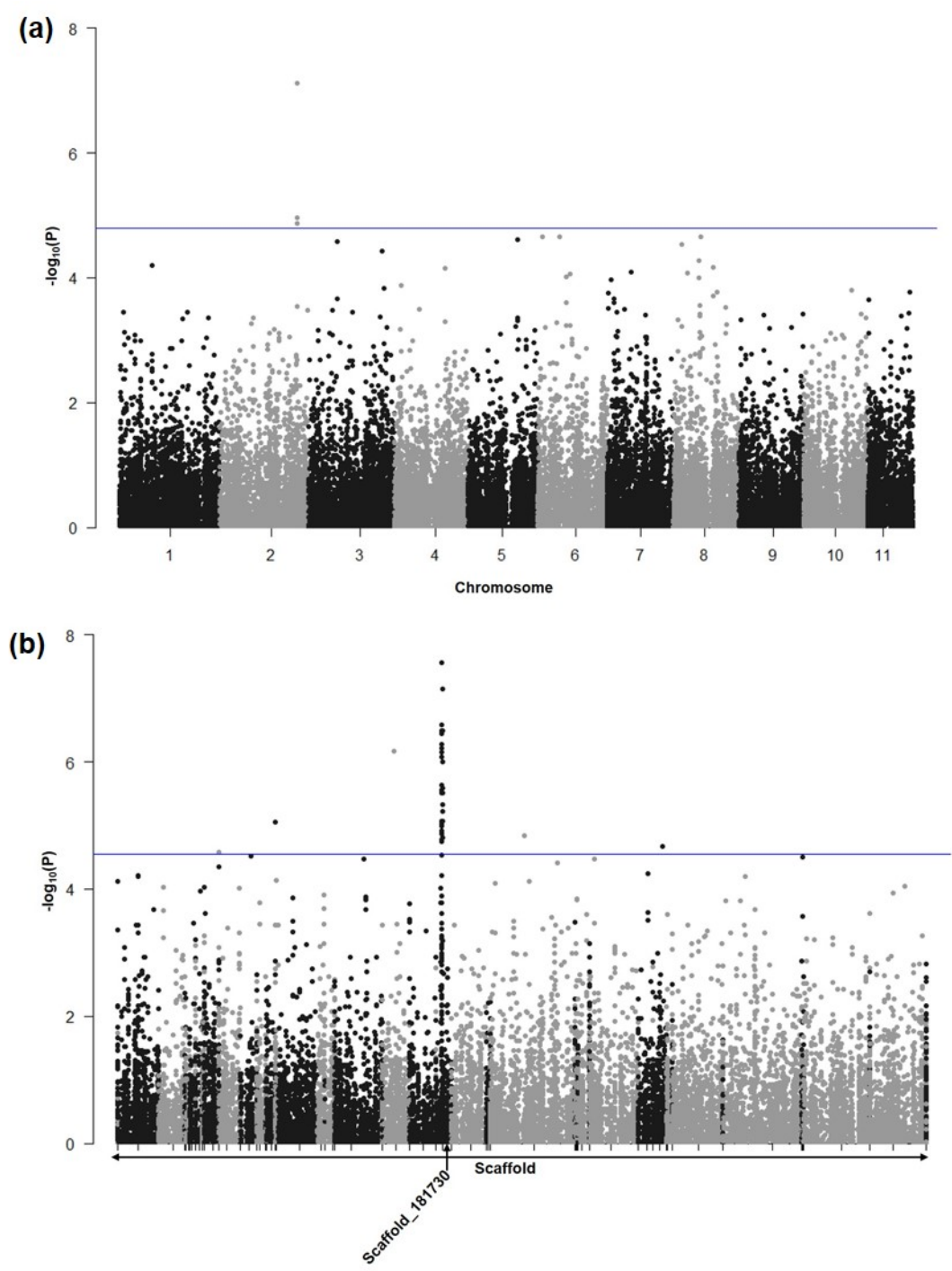
Supplementary Figure S1. Population structure in SEGI (a) and SESE (b) based on principal component analysis (PCA) results. PCA was carried out at TASSEL and plots were performed in R.

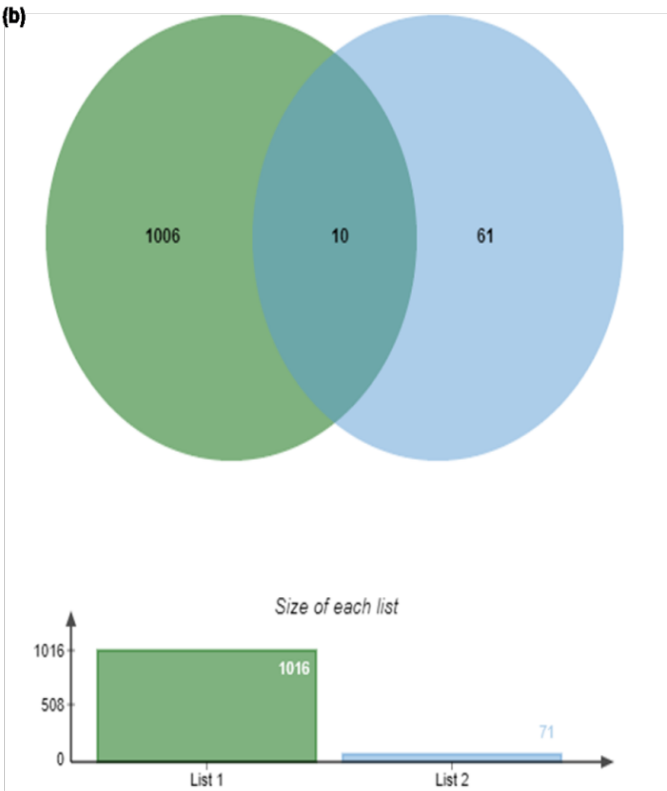
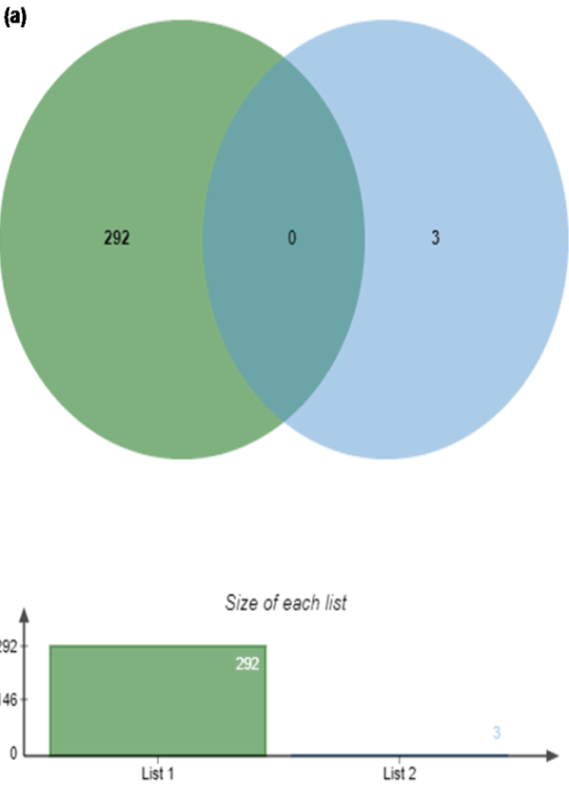


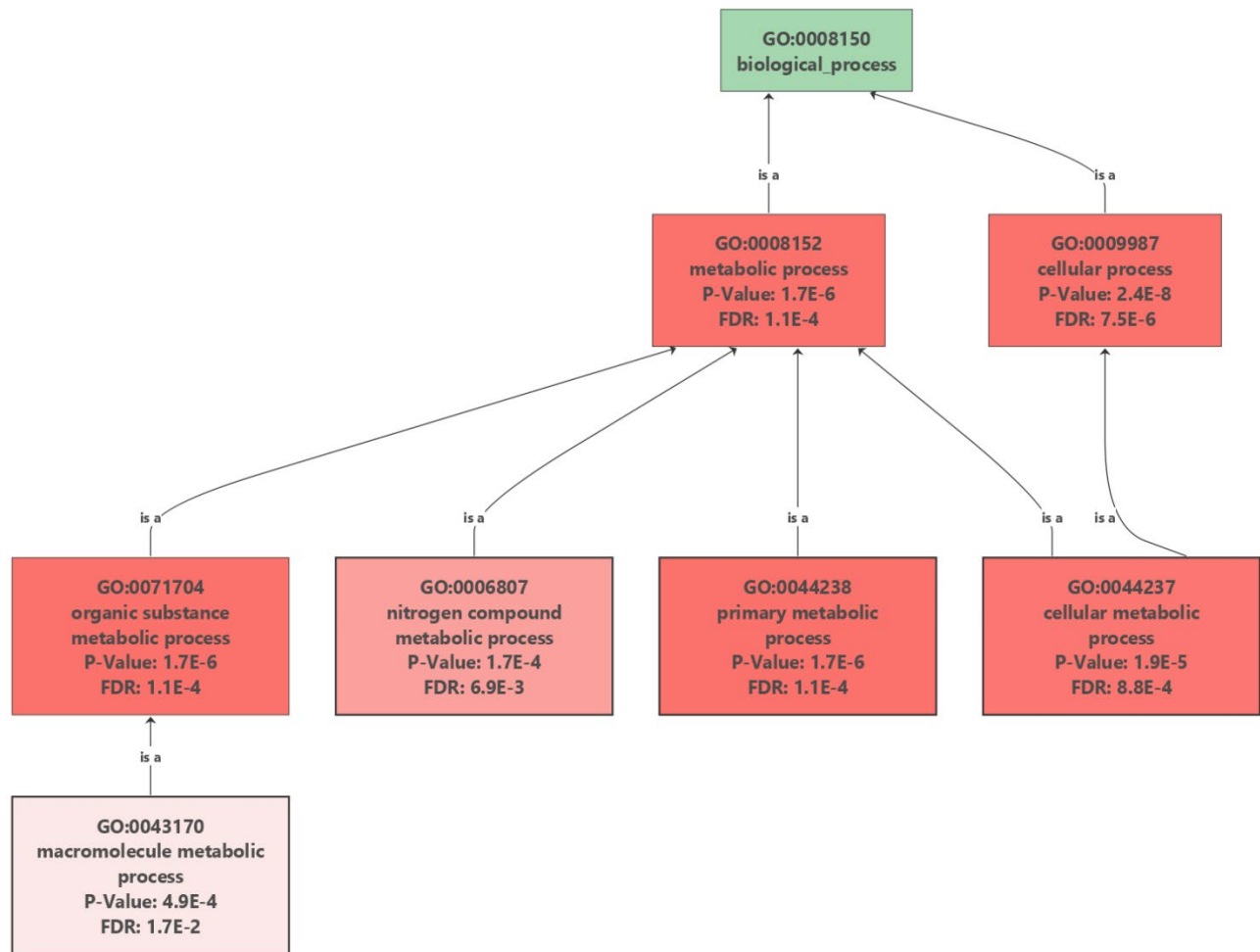


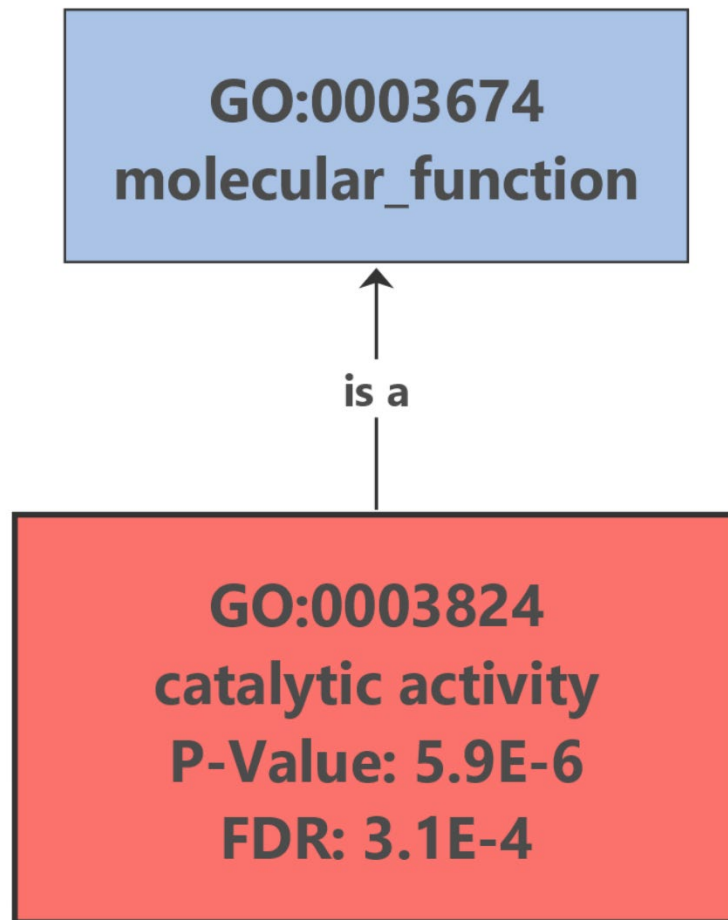


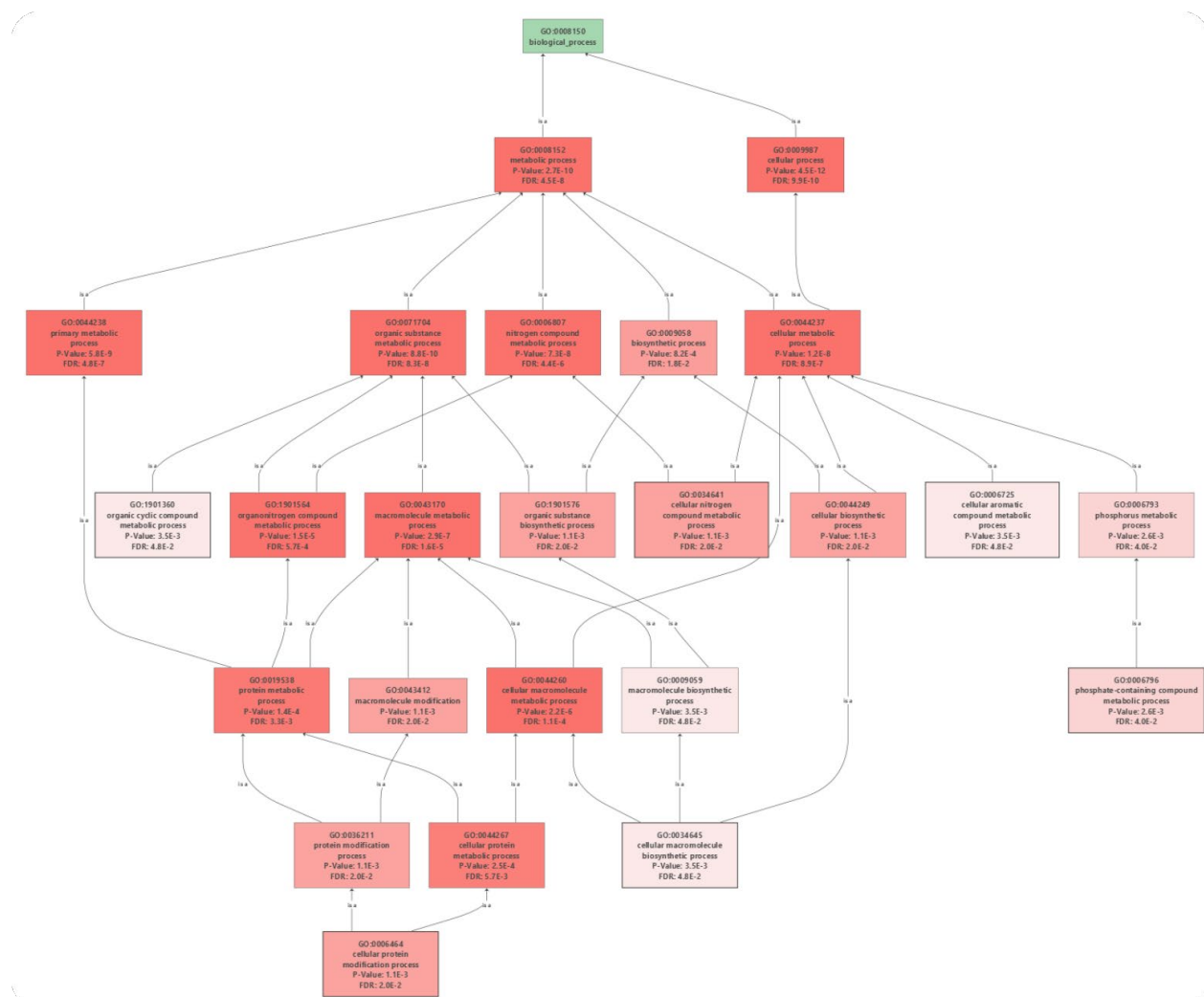


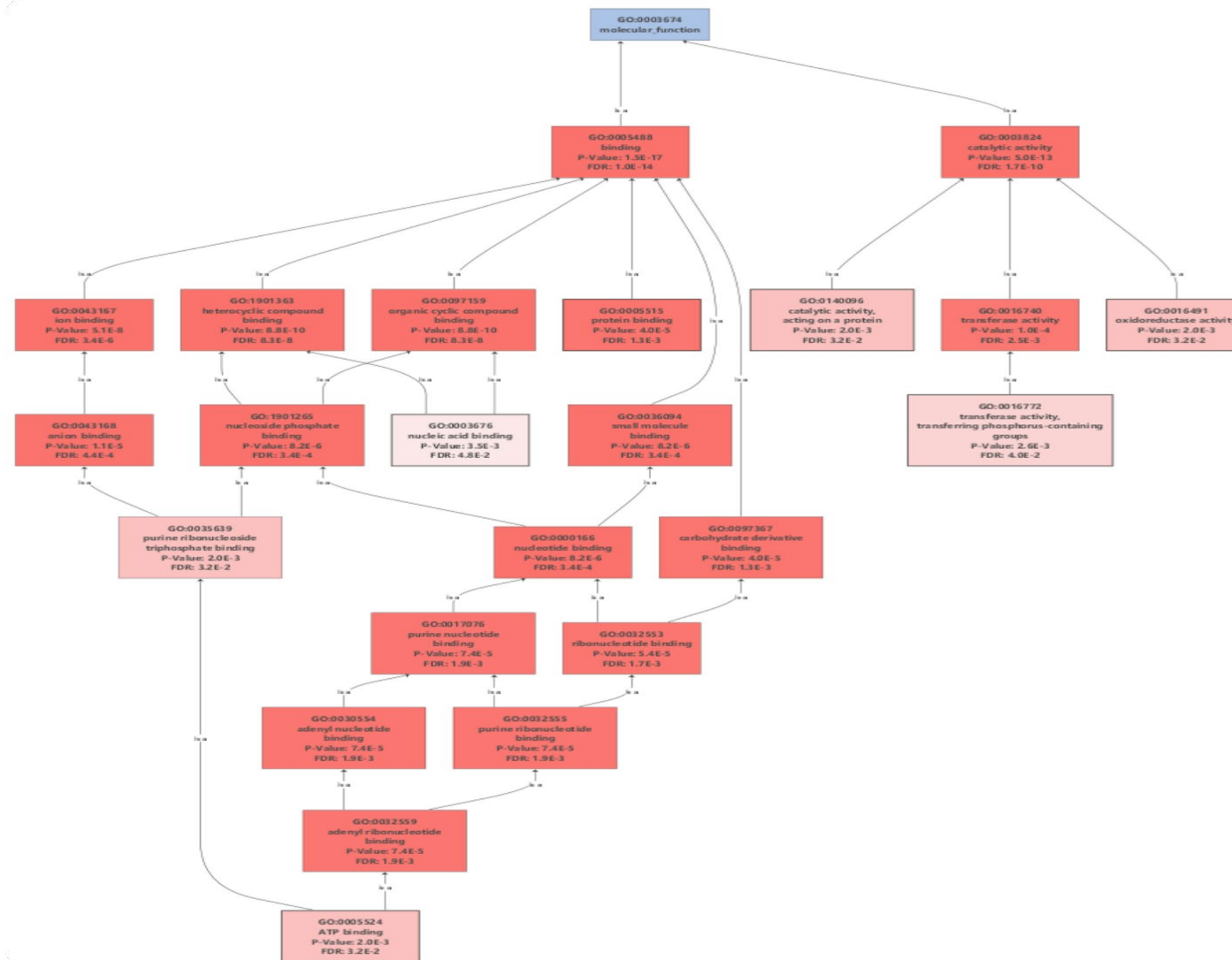












Supplementary Figure S11. GO enrichment analysis of molecular function (mf) in SESE. All GO terms are with p-value and FDR, calculated by Blast2GO.