

Genetic Characterization of Some Saudi Arabia's Accessions from *Commiphora gileadensis* Using Physio-Biochemical Parameters, Molecular Markers, DNA Barcoding Analysis and Relative Gene Expression

Fatmah Ahmed Safhi ¹, Salha Mesfer ALshamrani ², Areej Saud Jalal ^{1,*},
Diaa Abd El-Moneim ³, Amal A. Alyamani ⁴ and Amira A. Ibrahim ⁵

¹ Department of Biology, College of Science, Princess Nourah bint Abdulrahman University, P.O. Box 84428, Riyadh 11671, Saudi Arabia

² Department of Biology, College of Science, University of Jeddah, Jeddah 21959, Saudi Arabia

³ Department of Plant Production, (Genetic Branch), Faculty of Environmental and Agricultural Sciences, Arish University, El-Arish 45511, Egypt

⁴ Department of Biotechnology, Faculty of Science, Taif University, Taif 21974, Saudi Arabia

⁵ Botany and Microbiology Department, Faculty of Science, Arish University, El-Arish 45511, Egypt

* Correspondence: Asjalal@pnu.edu.sa

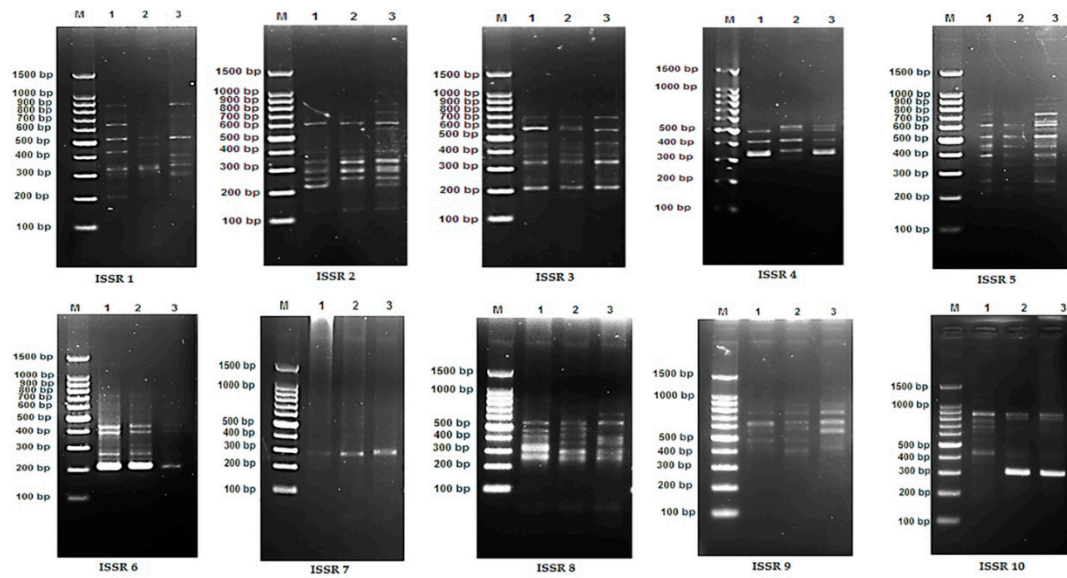


Figure S1. DNA profiles generated from ISSR marker for the *C. gileadensis* accessions in KSA.

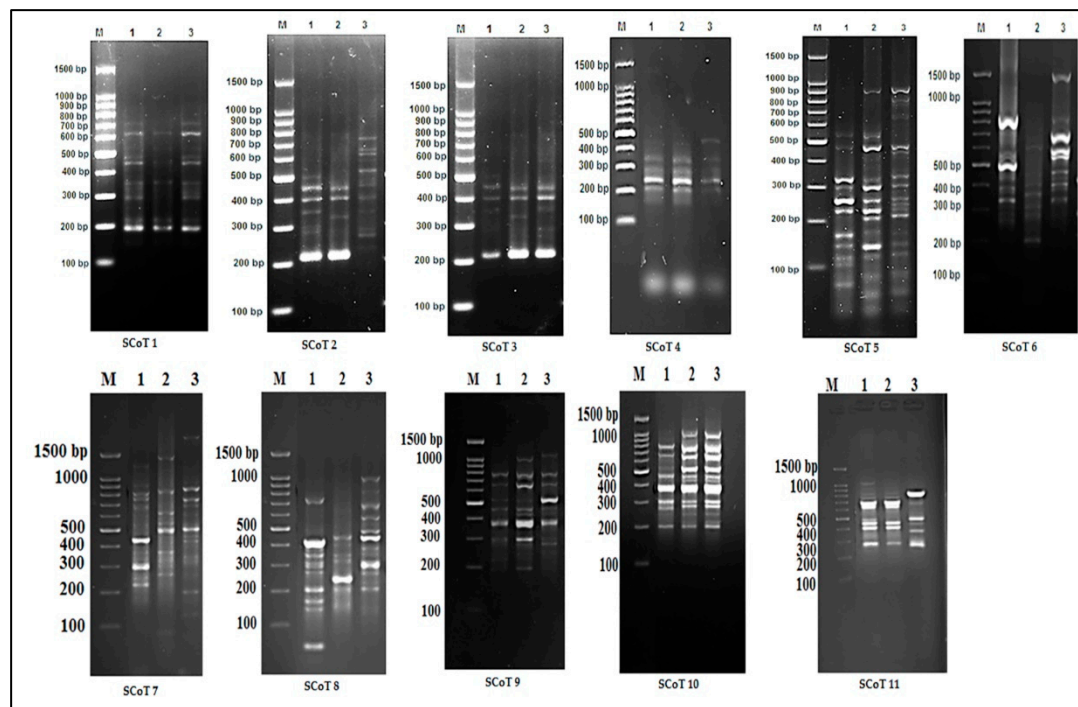


Figure S2. DNA profiles generated from SCoT marker for the *C. gileadensis* accessions in KSA.

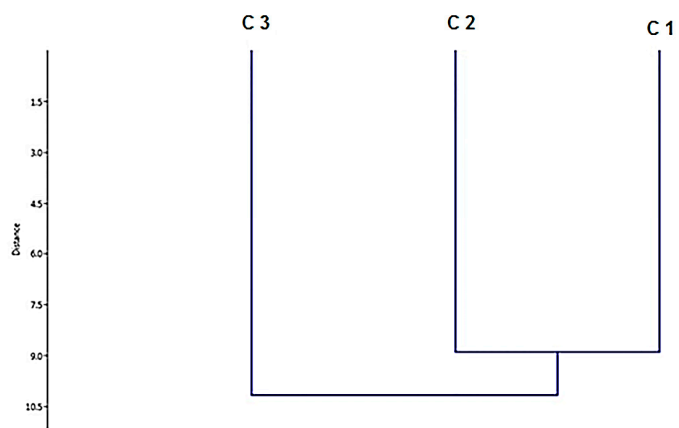


Figure S3. UPGAMA cluster for *C. gileadensis* accessions in KSA based on molecular markers (ISSR & SCoT).

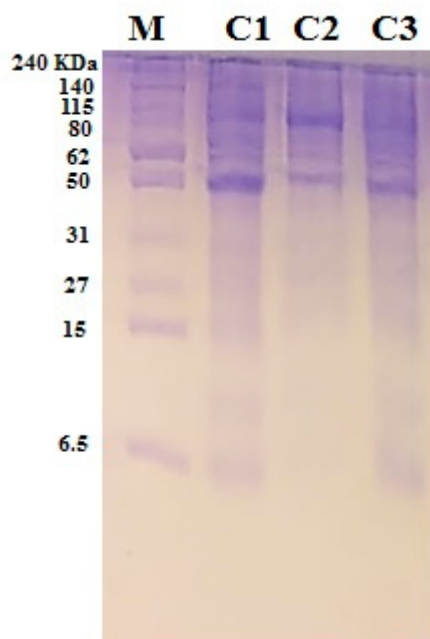


Figure S4. Protein profile of SDS-PAGE for *C. gileadensis* accessions in KSA.

Table S1. Code and locations of *Commiphora gileadensis* in KSA.

Code	Taxa	Location	Habitat	GPS	
				Latitude (N)	Longitude E
C1	<i>Commiphora gileadensis</i>	Jeddah	High Salt tolerant	21° 29' 33.0000"	39° 10' 39.2520"
C2	<i>Commiphora gileadensis</i>	Jizan	Low ssalt tolerant	16° 53' 21.6924"	42° 34' 14.0412"
C3	Al-Baha <i>Commiphora gileadensis</i>	Riyadh	Low salt tolerant	24° 42' 48.7872"	46° 40' 31.0656"

Table S2. Primer sequence used in real time PCR for gene expression.

Primer		Sequence
PAL 1	F	5'-ACAAATGGACATRTTAAT-3'
	R	5'-CTTCTATGAGATGTTGC-3'
Defensin (PR-12)	F	5'-CCAAATGCCTCGTCATCT-3'
	R	5'-ATTAGAGTCAAGCTCAAAAGG-3'
AFPRT (PR1)	F	5'-ATGGAACACGACACTGGCAG-3'
	R	5'-GCATACTGACCAGAGTAACTGG-3'
β-Actin	F	5'-GTGCCCATTACGAAGGATA-3'
	R	5'-GAAGACTCCATGCCGATCAT-3'