

## Supplementary Materials

**Supplementary Table S1:** Allele and genotypic frequency distribution in the control population and in the NSAID hypersensitivity group.

Gene	Chance	Allele frequency (C)	Allele frequency (NH)	Genotype frequency (C)	Genotype frequency (NH)
<i>IL1A</i>	-889 C>T	C: 1.00 T: 0.00	C: 0.98 T: 0.02	CC: 1.00 CT: 0.00	CC: 0.7 CT: 0.03
<i>IL1B</i>	-511 C>T	C: 0.70 T: 0.30	C: 0.69 T: 0.31	CC: 0.48 CT: 0.44 TT: 0.08	CC: 0.48 CT: 0.41 TT: 0.11
<i>IL1B</i>	3962 C>T	C: 0.83 T: 0.17	C: 0.76 T: 0.24	CC: 0.70 CT: 0.26 TT: 0.04	CC: 0.57 CT: 0.40 TT: 0.03
<i>IL1R1</i>	<i>pst1</i> C>T	C: 0.67 T: 0.33	C: 0.73 T: 0.27	CC: 0.45 CT: 0.44 TT: 0.11	CC: 0.54 CT: 0.39 TT: 0.07
<i>IL1RN</i>	<i>mspa1</i> T>C	C: 0.24 T: 0.76	C: 0.32 T: 0.68	CC: 0.05 CT: 0.38 TT: 0.57	CC: 0.07 CT: 0.50 TT: 0.43
<i>IL2</i>	-330 T>G	G: 0.32 T: 0.68	G: 0.33 T: 0.67	GG: 0.10 GT: 0.43 TT: 0.47	GG: 0.15 GT: 0.36 TT: 0.49
<i>IL2</i>	166 G>T	G: 0.72 T: 0.28	G: 0.64 T: 0.26	GG: 0.51 GT: 0.41 TT: 0.08	GG: 0.44 GT: 0.40 TT: 0.16
<i>IL4</i>	-1098 T>G	G: 0.07 T: 0.93	G: 0.14 T: 0.86	GG: 0.03 GT: 0.08 TT: 0.89	GG: 0.00 GT: 0.27 TT: 0.73
<i>IL4</i>	-589 C>T	C: 0.86 T: 0.14	C: 0.74 T: 0.26	CC: 0.75 CT: 0.21 TT: 0.04	CC: 0.51 CT: 0.47 TT: 0.02
<i>IL4</i>	-33 C>T	C: 0.86 T: 0.14	C: 0.82 T: 0.18	CC: 0.75 CT: 0.22 TT: 0.03	CC: 0.67 CT: 0.29 TT: 0.04
<i>IL4R</i>	1092 A>G	A: 0.77 G: 0.23	A: 0.81 G: 0.19	AA: 0.60 AG: 0.33 GG: 0.07	AA: 0.64 AG: 0.34 GG: 0.02
<i>IL6</i>	-174 G>C	C: 0.38 G: 0.62	C: 0.30 G: 0.70	CC: 0.15 CG: 0.46 GG: 0.39	CC: 0.06 CG: 0.48 GG: 0.46
<i>IL6</i>	nt565 G>A	A: 0.37 G: 0.63	A: 0.27 G: 0.73	AA: 0.14 AG: 0.46 GG: 0.40	AA: 0.04 AG: 0.47 GG: 0.49
<i>IL10</i>	-592 C>A	A: 0.31 C: 0.69	A: 0.30 C: 0.70	AA: 0.12 AC: 0.38 CC: 0.50	AA: 0.02 AC: 0.55 CC: 0.43
<i>IL10</i>	-819 C>T	C: 0.67 T: 0.33	C: 0.69 T: 0.31	CC: 0.49 CT: 0.36	CC: 0.43 CT: 0.53

				TT: 0.15	TT: 0.04
<b><i>IL10</i></b>	-1082 A>G	A: 0.67 G: 0.33	A: 0.67 G: 0.33	AA: 0.46 AG: 0.43 GG: 0.11	AA: 0.36 AG: 0.60 GG: 0.04
<b><i>IL12B</i></b>	-1188 A>C	A: 0.83 C: 0.17	A: 0.73 C: 0.27	AA: 0.71 AC: 0.25 CC: 0.04	AA: 0.54 AC: 0.38 CC: 0.08
<b><i>IFN</i></b>	874 A>T	A: 0.65 T: 0.35	A: 0.54 T: 0.46	AA: 0.51 AT: 0.27 TT: 0.22	AA: 0.32 AT: 0.45 TT: 0.23
<b><i>TGFB1</i></b>	c10 T>C	C: 0.41 T: 0.59	C: 0.49 T: 0.51	CC: 0.18 CT: 0.47 TT: 0.35	CC: 0.22 CT: 0.54 TT: 0.24
<b><i>TGFB1</i></b>	c25 G>C	A: 0.25 G: 0.75	C: 0.06 G: 0.94	CC: 0.04 CG: 0.16 GG: 0.80	CC: 0.01 CG: 0.09 GG: 0.90
<b><i>TNF</i></b>	-238 G>A	A: 0.07 G: 0.93	A: 0.08 G: 0.92	AA: 0.01 AG: 0.14 GG: 0.85	AA: 0.01 AG: 0.14 GG: 0.85
<b><i>TNF</i></b>	-308 G>A	A: 0.06 G: 0.94	A: 0.25 G: 0.75	AA: 0.01 AG: 0.10 GG: 0.89	AA: 0.06 AG: 0.38 GG: 0.56

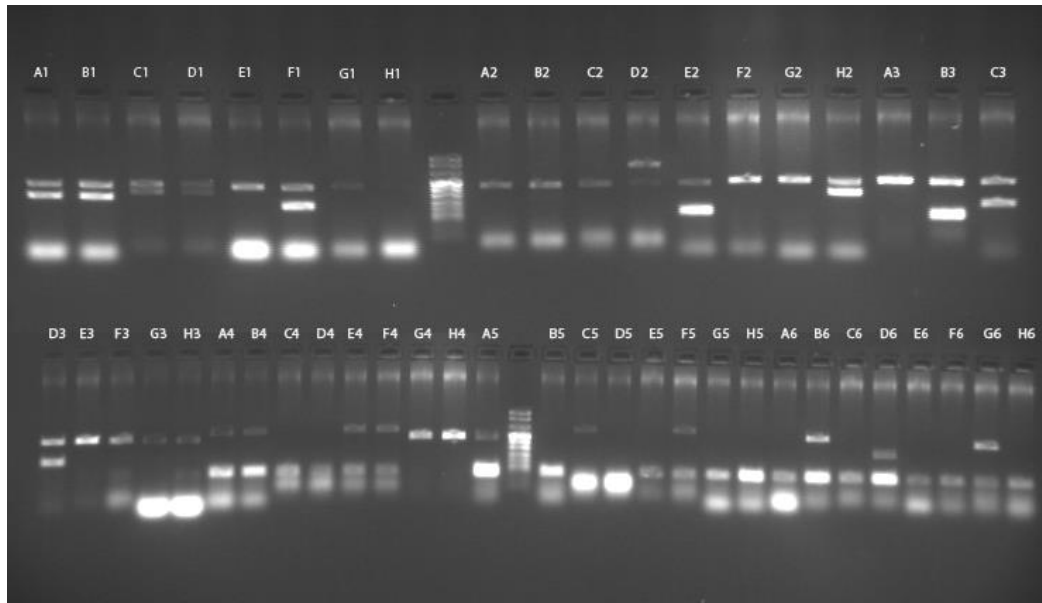
C: controls; NH: NSAID hypersensitivity

**Supplementary Table S2:** Statistical analysis of the allelic and genotypic distributions of all the SNPs included in the study in NSAID hypersensitivity patients compared with controls.

SNP	# p-value (Allelic)	# p-value (Genotypic)	SNP	# p-value (Allelic)	# p-value (Genotypic)
rs2234650	0.17	0.40	rs1800471	<b>0.043*</b>	0.19
rs1143634	0.09	0.11	rs2243248	<b>0.023*</b>	<b>&lt;0.001*</b>
rs16944	0.74	0.76	rs2243250	<b>0.002*</b>	<b>&lt;0.001*</b>
rs1800587	0.34	0.34	rs2070874	0.26	0.41
rs2430561	0.12	0.09	rs2069762	0.84	0.48
rs3212227	<b>0.013*</b>	<b>0.047*</b>	rs2069763	0.10	0.14
rs1801275	0.34	0.37	rs1800795	0.08	0.13
rs315952	0.06	0.11	rs1800797	<b>0.041*</b>	<b>0.040*</b>
rs1800629	<b>&lt;0.001*</b>	<b>&lt;0.001*</b>	rs1800896	0.88	<b>0.026*</b>
rs361525	0.78	0.91	rs1800871	0.59	<b>0.006*</b>
rs1982073	0.09	0.18	rs1800872	0.79	<b>0.008*</b>

# Fisher's p-value for comparing the group of NSAID hypersensitivity patients with the control group. \***p-value < 0.05**

**A.**



**B.**

	1	2	3	4	5	6
<b>A</b>	IL-1R T/1970 288	g-IFN T/874 277	TNFa A/-308//G/-238 110	IL4 T/-1098//C/-590 557	IL6 C/-174//G565 426	IL10 A/-1082//A/-592 530
<b>B</b>	IL-1R C/1970 288	g-IFN A/874 277	TNFa G/-308//G/-238 110	IL4 T/-1098//T/-590 557	IL6 G/-174//G565 427	IL10 A/-1082//C/-592 530
<b>C</b>	IL-1b C/+3962 336	IL-12 A/-1188 802	TGFb1 T/10 195	IL2 T/-330//T/166 569	IL4 C/-590//C/-33 610	IL10 A/-1082//T/-819 305
<b>D</b>	IL-1b T/+3962 336	IL-12 C/-1188 802	TGFb1 C/10 195	IL2 G/-330//T/166 569	IL4 C/-590//T/-33 610	IL10 A/-1082//C/-819 305
<b>E</b>	IL-1b T/-511 215	IL-4Ra A/1902 143	TGFb1 T/10-C/25 80	IL2 G/-330//G/166 564	IL4 T/-590//C/-33 610	IL10 G/-1082//C/-592 530
<b>F</b>	IL-1b C/-511 215	IL-4Ra G/1902 143	TGFb1 T/10-G/25 80	IL2 T/-330//G/166 562	IL4 T/-590//T/-33 610	IL10 G/-1082//C/-819 305
<b>G</b>	IL-1a C/-889 220	IL-1RA C/11100 297	TGFb1 C/10-C/25 80	TNFa A/-308//A/-238 110	IL4 G/-1098//C/-590 557	IL6 C/-174//A/565 428
<b>H</b>	IL-1a T/-889 220	IL-1RA T/11100 297	TGFb1 C/10-G/25 80	TNFa G/-308//A/-238 110	IL4 G/-1098//T/-590 557	IL6 G/-174//A565 428
		Control 440pb				
		Control 89				

**Supplementary Figure S1. Results of PCR-SSP genotyping analysis.** **A:** Visualization with UV light of the 22 polymorphisms through bands in an electrophoresis gel corresponding to a patient. **B:** Results interpretation template. Each box corresponds to each of the wells of image A. In each box the amplifying allele is indicated, as well as the size in base pairs of the product band. In the gray shaded boxes the size of the control band is 440 bp, and in the white boxes the control band is 89 bp.