

Supplementary Data

Table S.1 - Precise locations of drinking water fountains

Fountain No.1	Longitude	Latitude
1	37°48'31.4"S	144°56'41.7"E
2	37°48'25.6"S	144°57'05.1"E
3	37°48'24.9"S	144°57'21.4"E
4	37°48'15.9"S	144°57'48.3"E
5	37°48'12.0"S	144°57'58.9"E
6	37°48'08.5"S	144°58'18.8"E
7	37°48'26.3"S	144°58'22.2"E
8	37°48'36.9"S	144°58'20.7"E
9	37°48'43.2"S	144°58'14.8"E
10	37°48'58.9"S	144°58'01.0"E
11	37°49'00.4"S	144°58'09.9"E
12	37°49'06.4"S	144°58'26.1"E

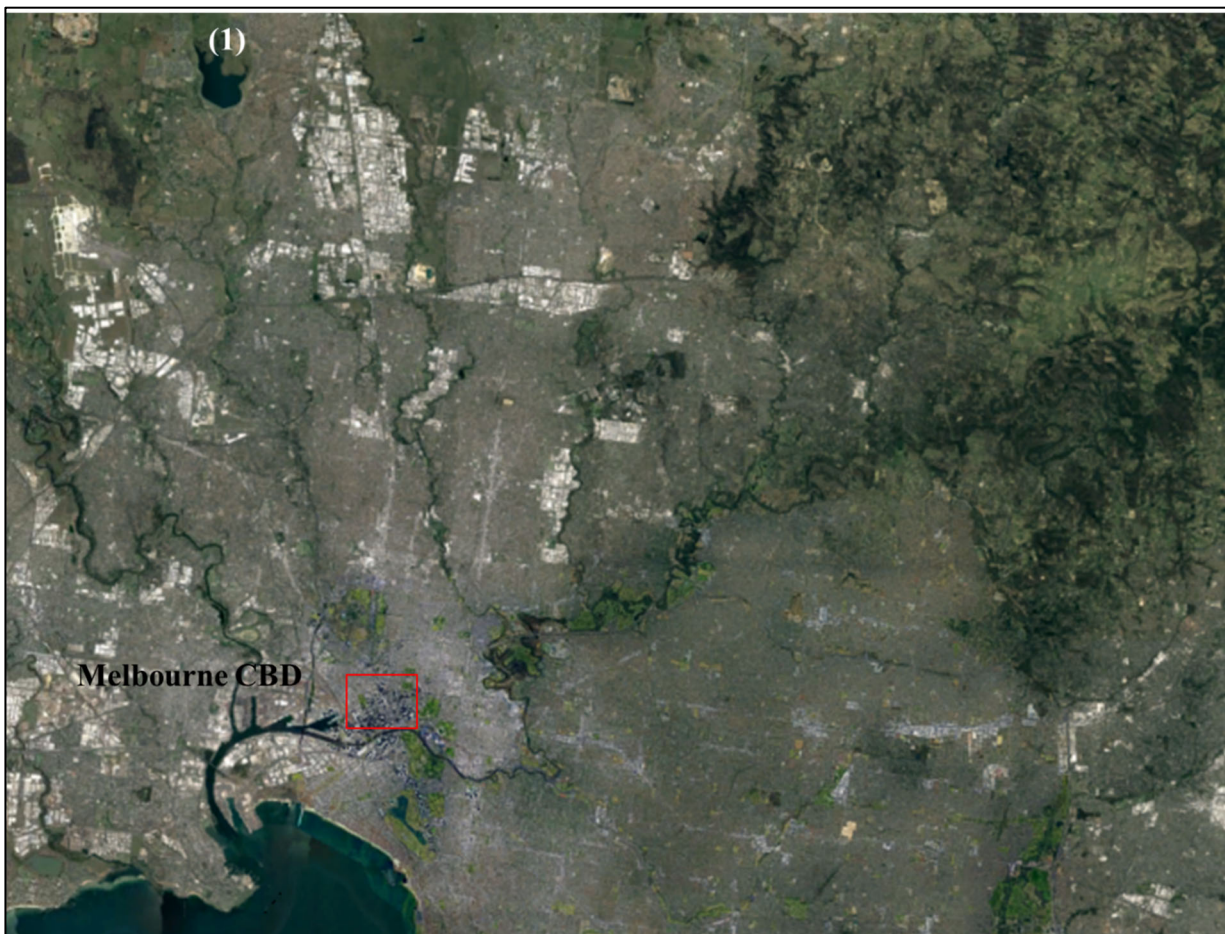


Figure S1 – Reservoirs supplying water to City West Water customers; (1) Greenvale, (2) Sugarloaf and (3) Silvan. * - Winneke treatment plant. Red box indicates sampling area within Melbourne Central Business District (Google Earth, 2020).

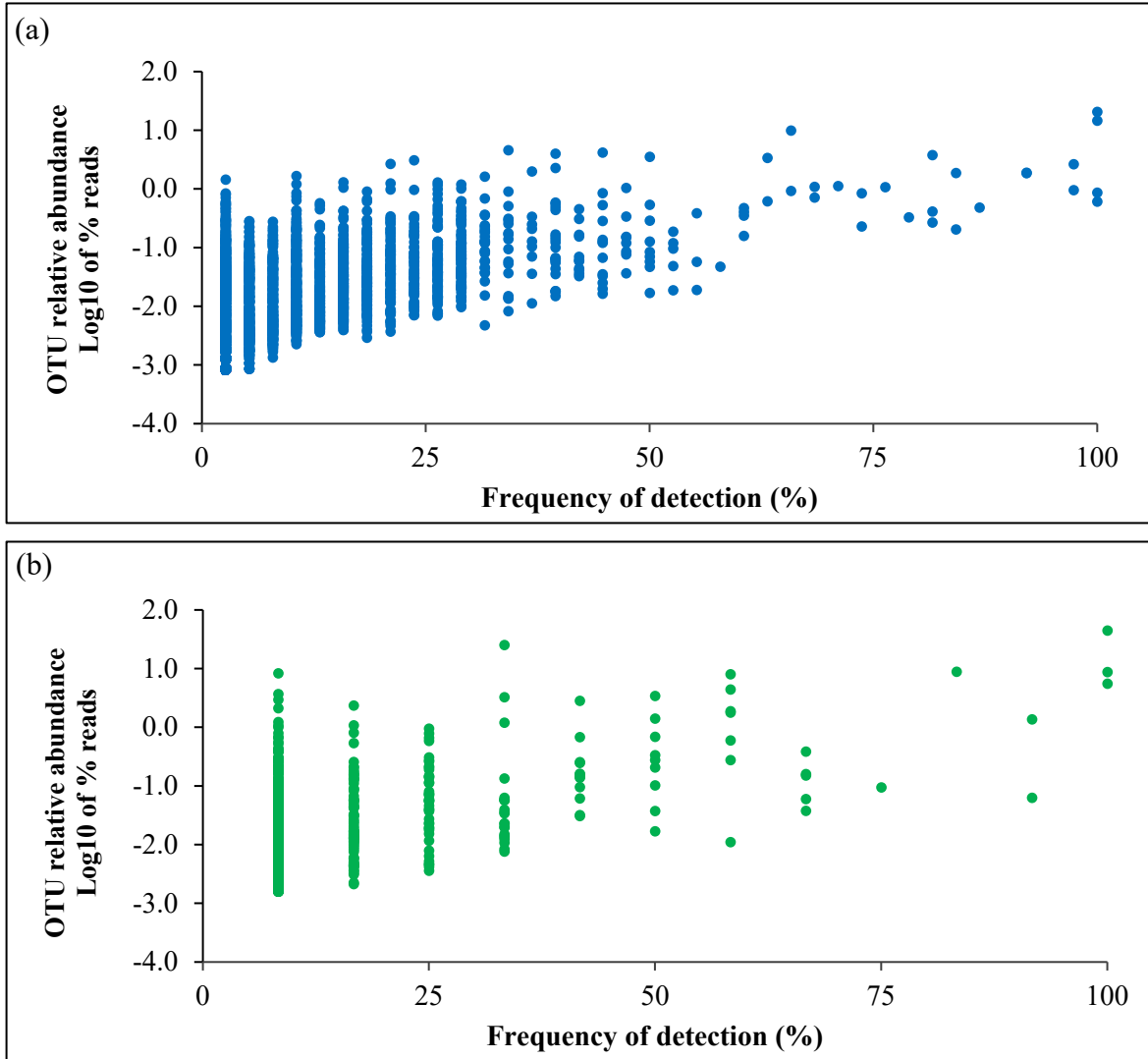
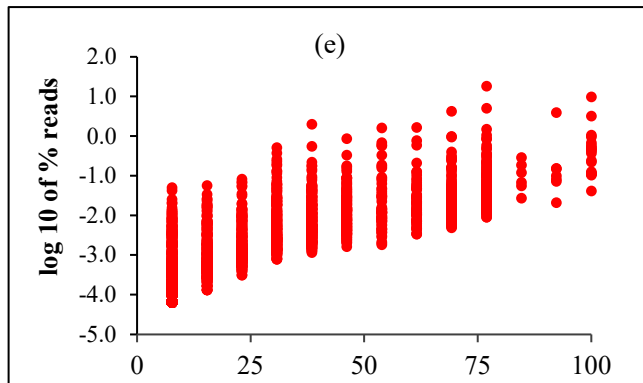
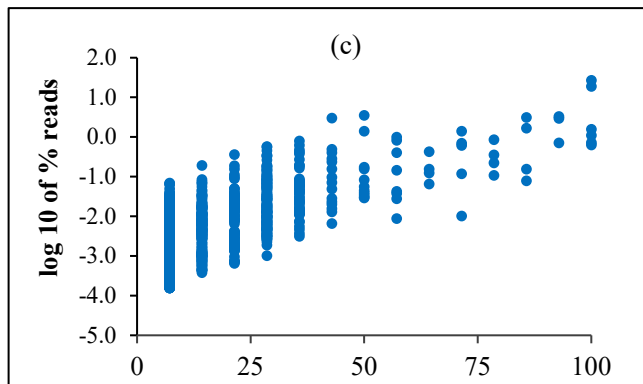
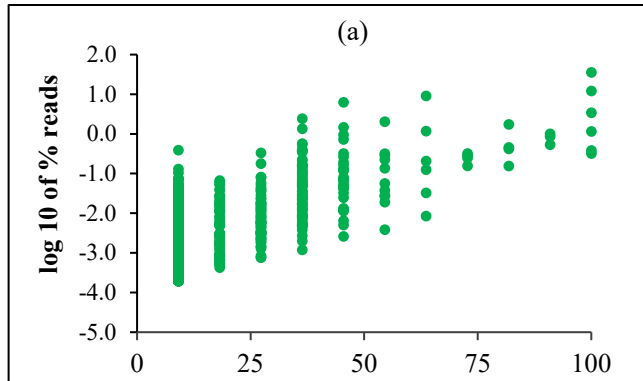


Figure S2 – Frequency of detection and relative abundance of OTUs in (a) drinking water (n=38) and (b) biofilms (n = 12) in drinking water fountains.

Water



Biofilm

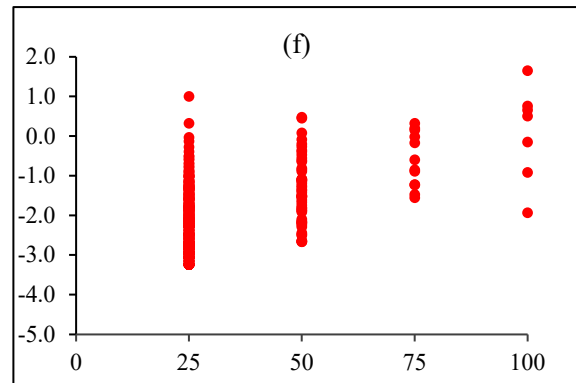
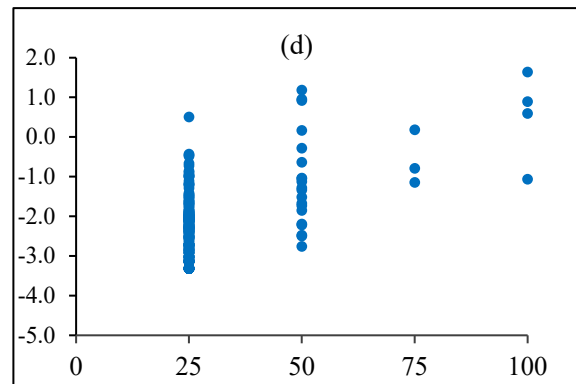
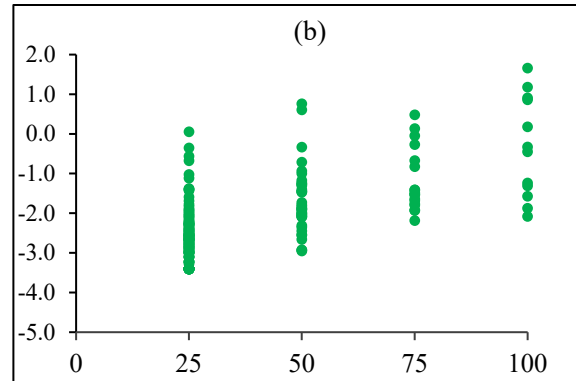


Figure S3 – Frequency of detection and relative abundance of OTUs in drinking water (n= 38) and biofilms (n = 12) across fountain types; A (green), B (blue) and C (red). Water samples are (a), (c) and (e) and biofilm samples are (b), (d) and (f).