

## Supporting information

### **Added Biochars Promoted Nitrogen and Phosphorus Removal from Ecological Ditches at Low Temperature**

**Guangsha Bai** <sup>1,2,3,4,†</sup>, **Si Pang** <sup>3,4,5,†</sup>, **Dongsu Bi** <sup>1</sup>, **Siqi Wang** <sup>1,2</sup>, **Min Cai** <sup>3,4</sup>,  
**Lingqi Kong** <sup>1,2</sup>, **Zheng Shen** <sup>2,\*</sup> and **Yalei Zhang** <sup>2,5</sup>

<sup>1</sup> School of Chemical and Environmental Engineering, Shanghai Institute of Technology, Shanghai 201418, China

<sup>2</sup> Institute of New Rural Development, Tongji University, Shanghai 200092, China

<sup>3</sup> Eco-Environmental Protection Research Institute, Shanghai Academy of Agricultural Science, Shanghai 201403, China

<sup>4</sup> Shanghai Engineering Research Centre of Low-Carbon Agriculture, Shanghai 201403, China

<sup>5</sup> State Key Laboratory of Pollution Control and Resource Reuse, College of Environmental Science and Engineering, Tongji University, Shanghai 200092, China

\* Correspondence: shenzheng@tongji.edu.cn

† These authors contributed equally to this work

### **Summary of SI:**

- Pages: 6
- Figure: 6

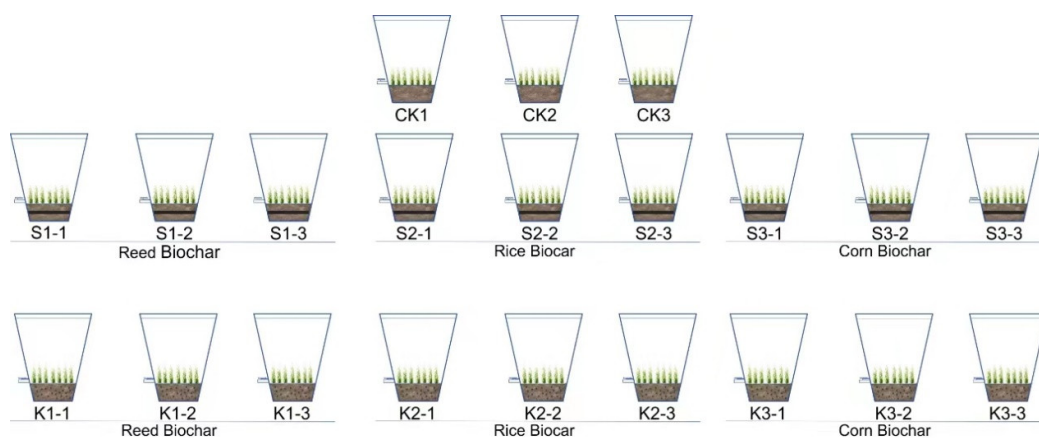
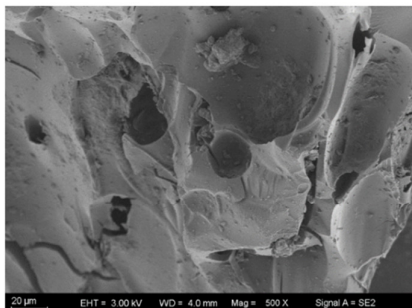
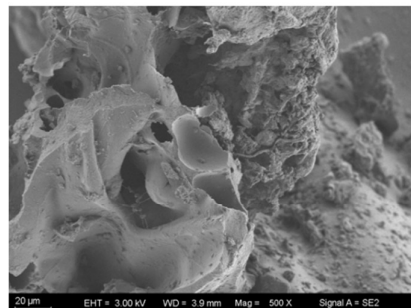


Figure S1. Schematic diagram of simulated ecological ditches.



Corn biochar scanning electron microscope



Rice biochar scanning electron microscope

Figure S2. Biochar scanning electron microscope

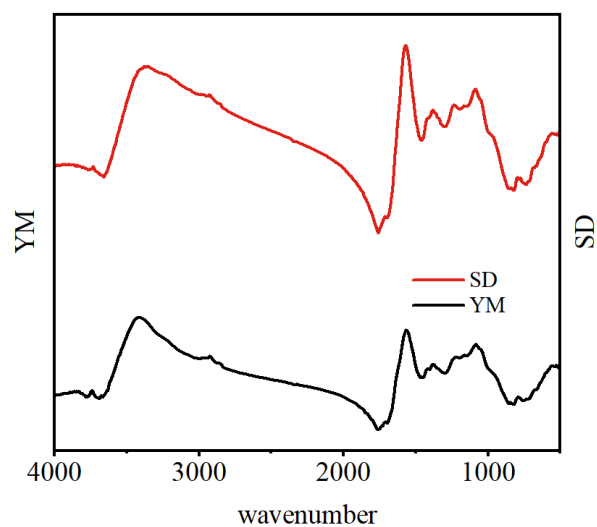


Figure S3. Two types of biochar Fourier transform spectra (YM: Corn biochar SD: Rice biochar)

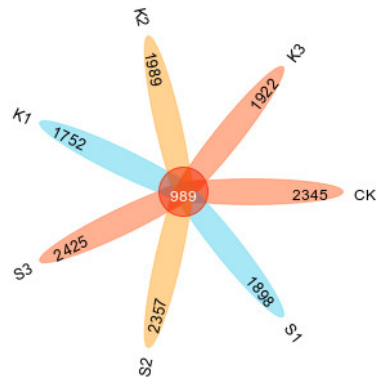
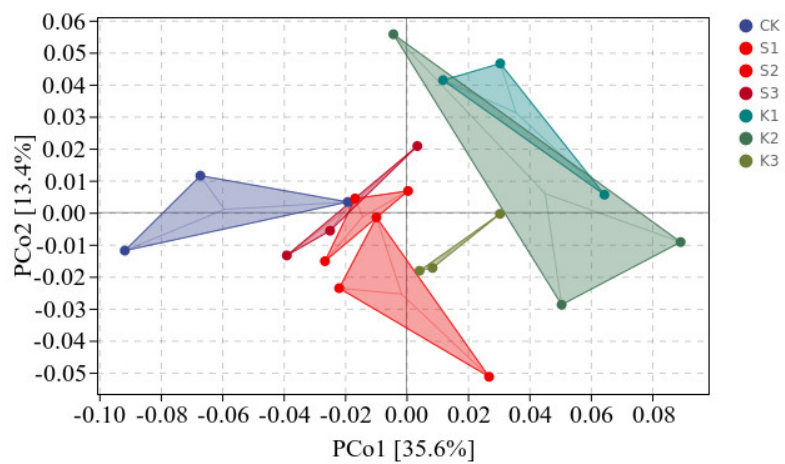


Figure S4. The number of OTUs in all samples.



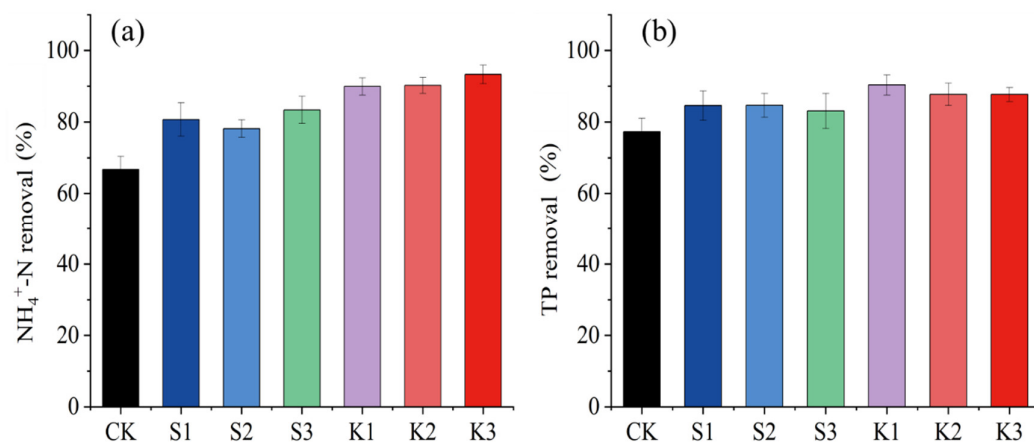


Figure S6.  $\text{NH}_4^+\text{-N}$  removal (a) and TP removal (b) in mixed addition of biochar treatment group (K1, K2, K3), with rhizosphere addition of biochar treatment group (S1, S2, S3) and without biochar (CK).