

## **Supplementary Materials for:**

### **Get a grip: Variation in human hand grip strength and implications for human evolution**

Ameline Bardo<sup>1</sup>, Tracy L. Kivell<sup>1,2</sup>, Katie Town<sup>1</sup>, Georgina Donati<sup>3</sup>, Haiko Ballieux<sup>4</sup>, Cosmin Stamate<sup>5</sup>, Trudi Edginton<sup>6</sup>, Gillian S. Forrester<sup>7</sup>

<sup>1</sup> Skeletal Biology Research Centre, School of Anthropology and Conservation, University of Kent, Canterbury, Kent, CT2 7NR, UK.

<sup>2</sup> Department of Human Evolution, Max Planck Institute for Evolutionary Anthropology, D-04103 Leipzig, Germany.

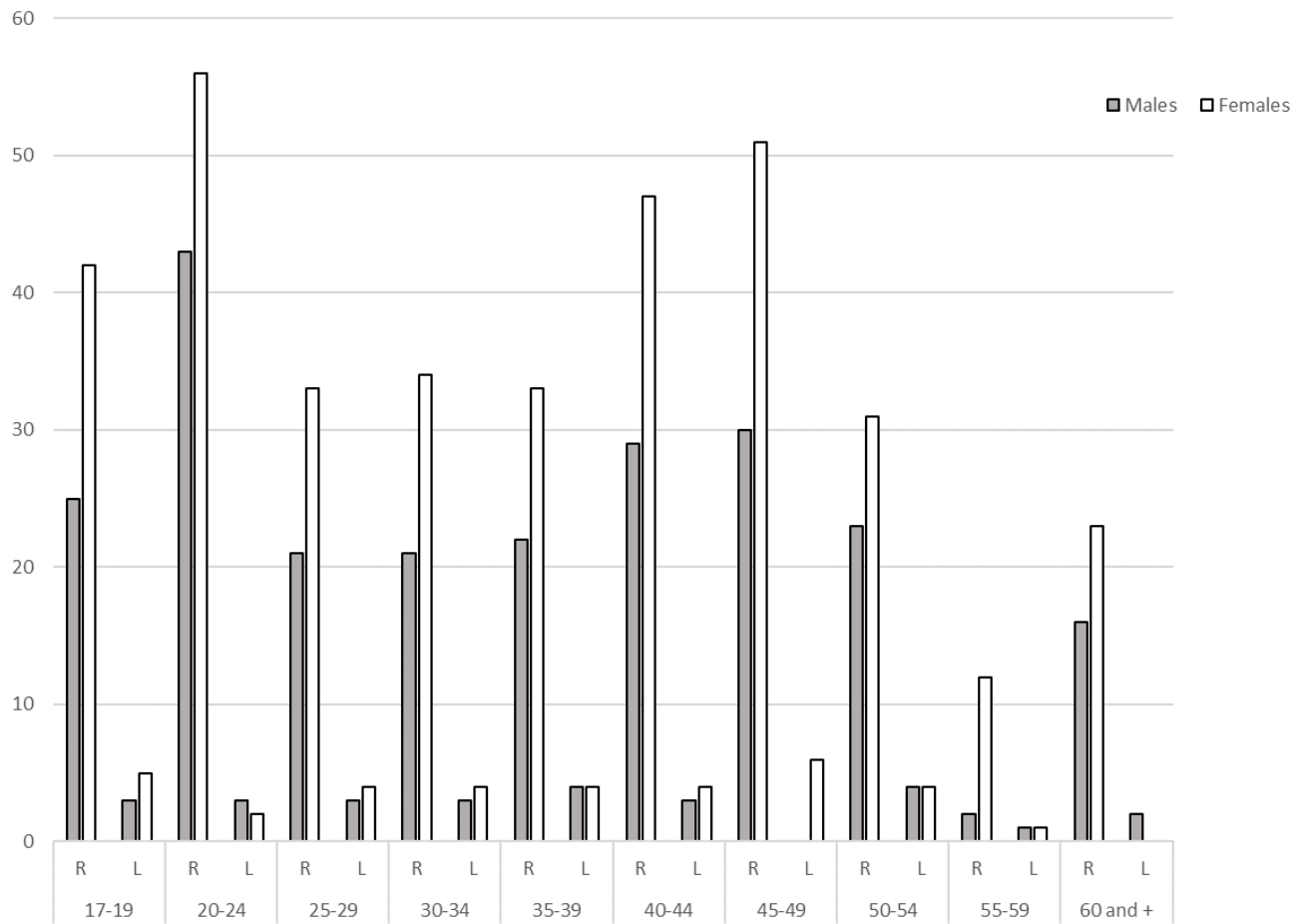
<sup>3</sup> Department of Psychiatry, University of Oxford, Warneford Hospital, Oxford OX3 7JX, UK.

<sup>4</sup> Psychology, School of Social Sciences, University of Westminster, London W1W 6UW, UK.

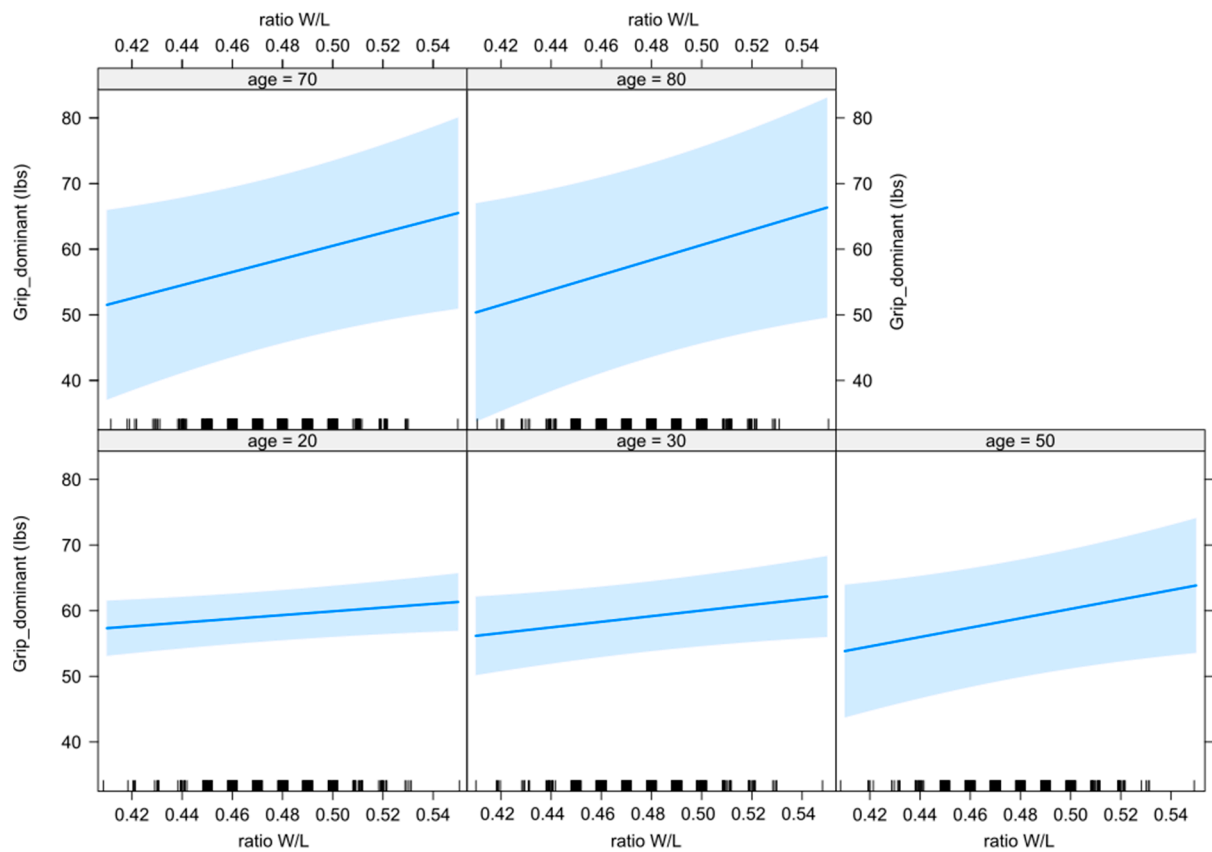
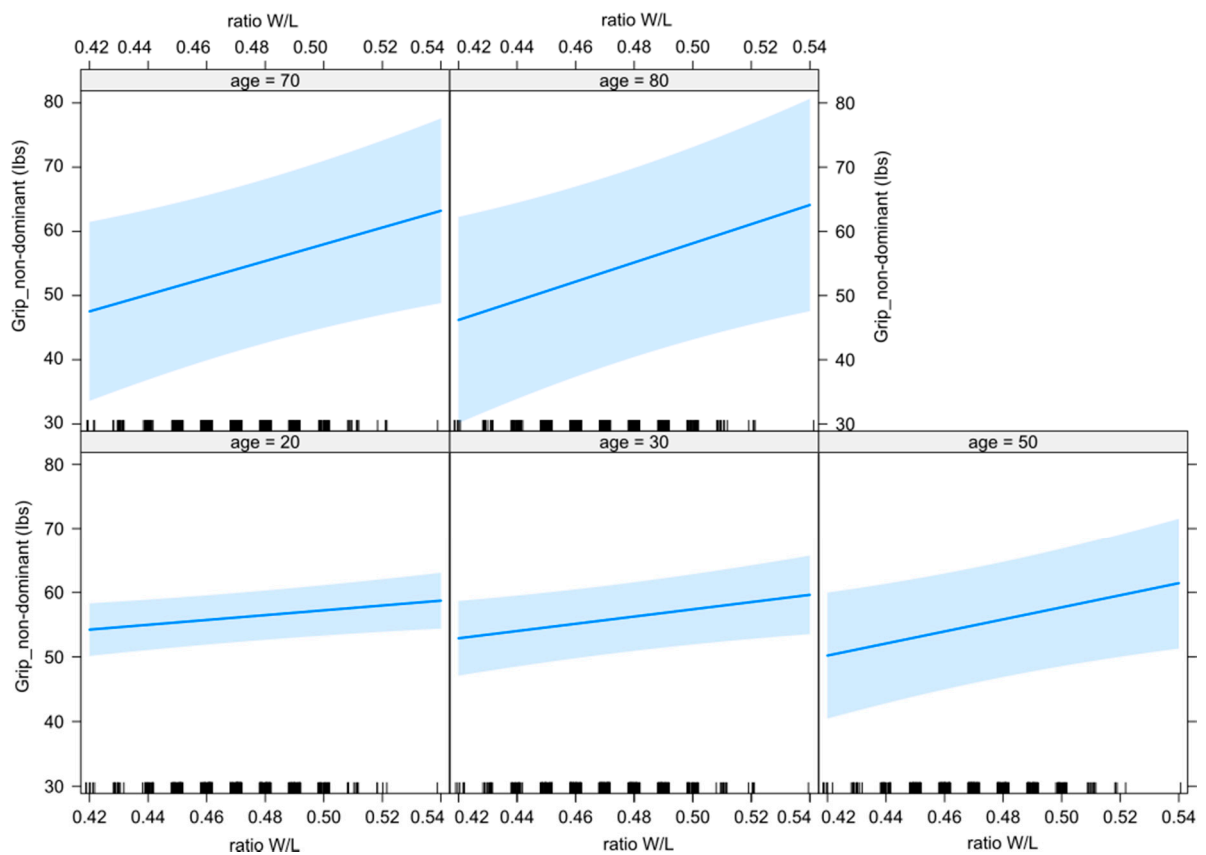
<sup>5</sup> Department of Computer Science, Birkbeck, University of London, London WC1E 7HX, UK.

<sup>6</sup> Department of Psychology, City, University of London, London EC1V 0HB, UK.

<sup>7</sup> Department of Psychological Sciences, Birkbeck, University of London, Malet Street, London W1CE 7HX, UK.



**Fig. S1.** Distribution of participants used in the analyses according to ages groups and with right-handed (R) and left-handed (L) participants.

**A****Hand shape by age****B****Hand shape by age**

**Fig. S2.** Predictor effect plots for the fitting linear models of the interaction between age and hand shape for grip strength in female, for the dominant hand (A) and the non-dominant hand (B).

**Table S1.** Details of the difference in percentage between hand grip strength in dominant and non-dominant hands for each sex (M = males; F = females) and ages groups, according to right and left-handers, practicing of sport and the different occupations.

	All individuals		Right-handed		Left-handed		Practicing sport		No practice of sport		Forceful manual labour		Office job/work		Precision manual work	
Rank of age (years)	M	F	M	F	M	F	M	F	M	F	M	F	M	F	M	F
17-19 (N = 75)	7.7	6.7	7.3	6.6	11.5	7	6.4	5.3	12.6	10.8	-	-	7.7	6.7	-	-
20-24 (N = 104)	4.5	3.8	4.7	3.6	1	10.8	3.1	3.6	11.4	4	0.5	0.9	5.9	4	-0.5	4
25-29 (N = 61)	5.1	6.4	4.4	5.2	9.8	16.6	4.5	4.4	8.9	8.1	14.7	2.3	1.8	7.6	11.3	5.2
30-34 (N = 62)	8.5	4.6	8.4	4.6	8.7	4.9	9.8	0.7	2.2	8	10	4.8	7.8	4.3	12.2	5.9
35-39 (N = 63)	1.9	3.5	0.9	3.4	8.3	4	1.4	1.8	3.2	5.2	-2	5.2	2.9	2.7	-	6
40-44 (N = 82)	5	0.4	4.9	0.8	6	-5	6.2	-0.7	3	1.3	-1.6	2.6	6	0	15.6	3.6
45-49 (N = 87)	5.6	4.4	5.6	4.1	-	6.5	6.8	3.9	2.9	4.8	0	5.9	7.6	4.3	0.7	3.8
50-54 (N = 62)	4.8	2.2	4.2	1.8	9	6	1.5	2.7	9.1	1.5	-4	-	6.6	2.9	-1.4	-10.3
55-59 (N = 16)	11.4	4.2	9.8	3.3	14.6	15.2	11.4	7.5	-	-1.4	-	-	11.4	6.5	-	17.7
60 and + (N = 41)	7.6	8.8	7.6	8.8	7.9	-	9.7	11.5	6	6.4	11.9	--	8.1	7.4	-2.9	-20
<b>Total all</b>	<b>5.5</b>	<b>4.2</b>	<b>5.2</b>	<b>4</b>	<b>8.2</b>	<b>6.4</b>	<b>5.2</b>	<b>3.5</b>	<b>6.2</b>	<b>4.9</b>	<b>2.2</b>	<b>3.3</b>	<b>6.1</b>	<b>4.2</b>	<b>4.7</b>	<b>4.4</b>