

Supplementary Materials

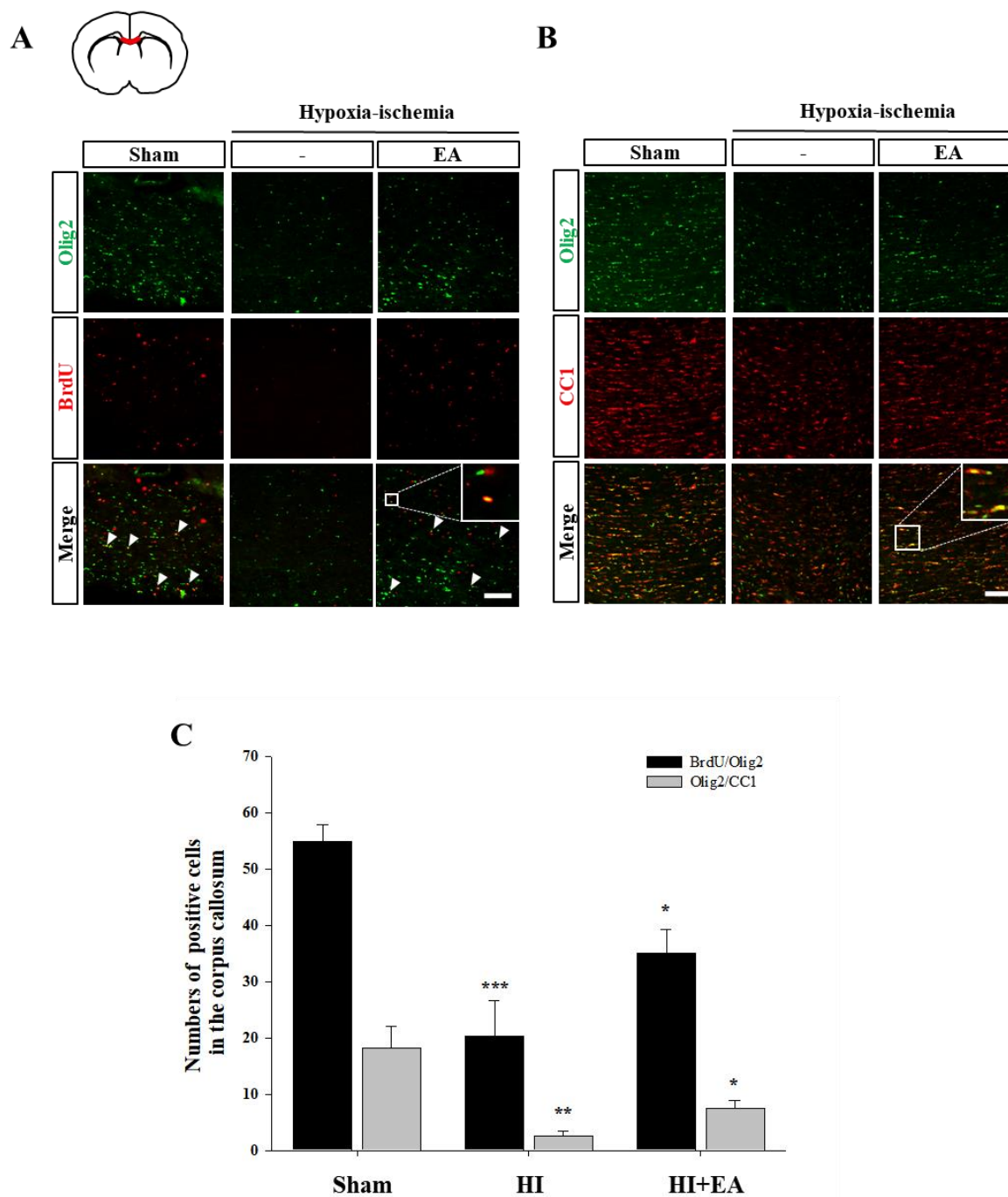


Figure S1. Effect of EA on the activation of oligodendrocytes in the corpus callosum. **(A)** Fluorescence staining against Olig2 (green) and BrdU (red) after EA (3mA) treatment. Scale bar = 100 μ m. **(B)** Immunofluorescence staining against Olig2 (green) and CC1 (red) after EA (3mA) treatment. Scale bar = 100 μ m. **(C)** The number of Olig2⁺/BrdU⁺ cells and Olig2⁺/CC1⁺ cells. Olig2⁺/BrdU⁺ cells and Olig2⁺/CC1⁺ cells were increased in the EA group. Data presented as mean \pm SEM. * P < 0.05, ** P < 0.01 and *** P < 0.001 vs. sham. Olig2 (NBP1-28667, Novus Biologicals, Littleton, USA); and CC1 (GTX16794, APC antibody, Gentex Corp., CA, USA).