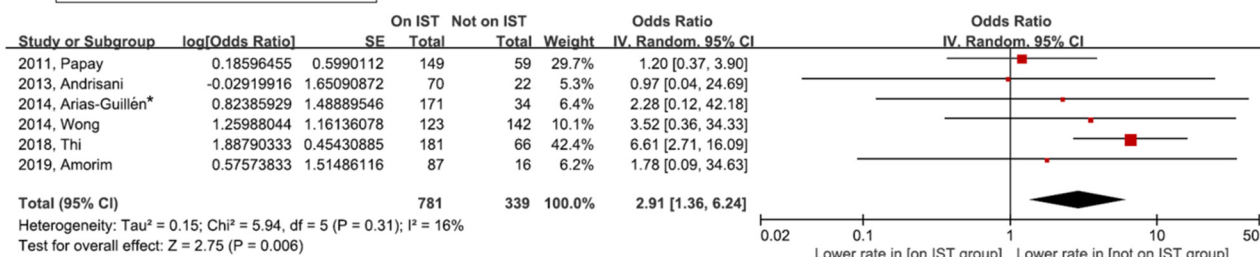


Supplementary figures

A

IGRA-indeterminate rate



B

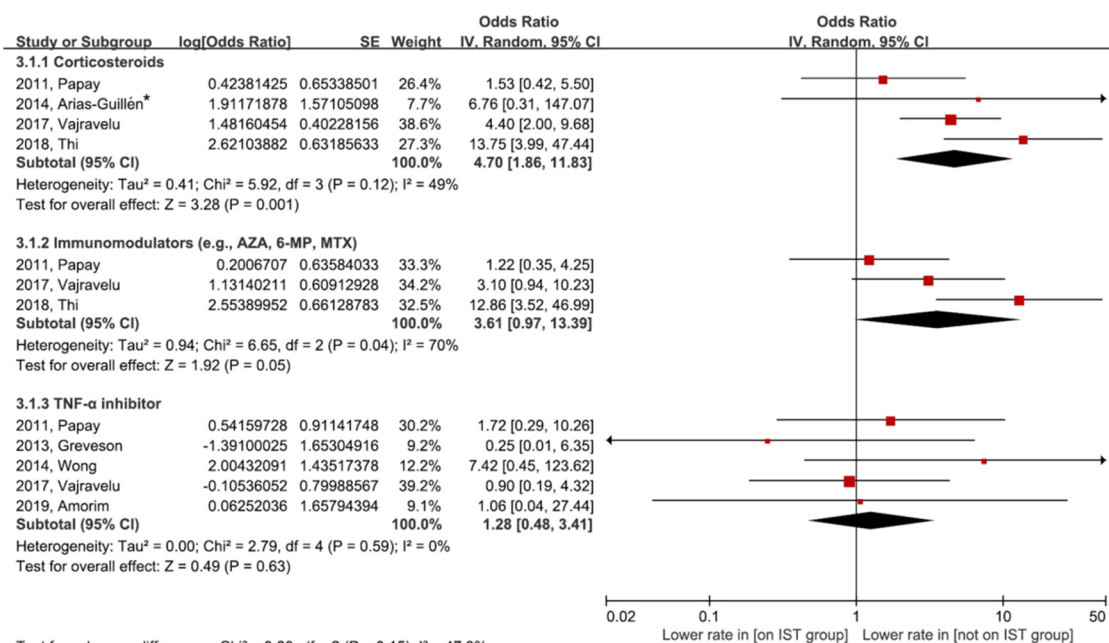


Figure S1. Forest plot for IGRA-indeterminate rates between patients on IST and those not on IST. (A) Any IST, and (B) Subgroup analysis according to IST.

*In this study, both QFT and T-SPOT were performed. QFT data were included in the meta-analysis.

IGRA, interferon γ release assay; IST, immunosuppressive treatment; QFT, QuantiFERON-TB Gold In-Tube test; T-SPOT, T-SPOT.TB test; AZA, azathioprine; 6-MP, 6-mercaptopurine; MTX, methotrexate; TNF, tumor necrosis factor; SE, standard error; IV, inverse variance; CI, confidence interval; df, degrees of freedom.

IGRA-positive rate

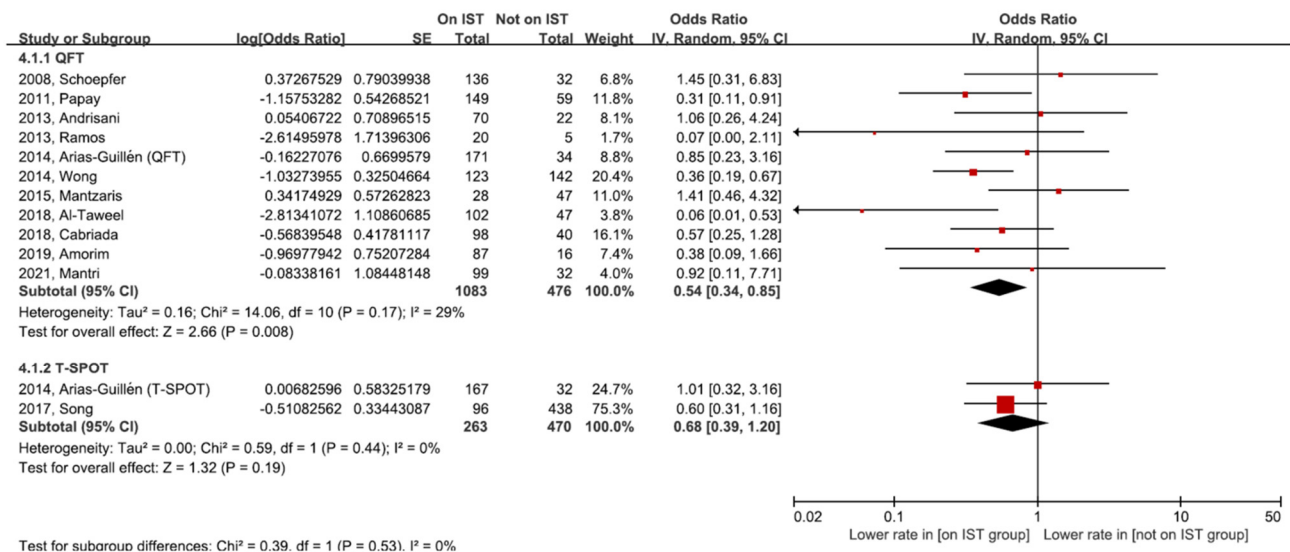


Figure S2. Sensitivity analysis for IGRA-positive rates according to type of IGRA test. (A) QFT, and (B) T-SPOT
 IGRA, interferon γ release assay; IST, immunosuppressive treatment; QFT, QuantiFERON-TB Gold In-Tube test; T-SPOT, T-SPOT.TB test; SE, standard error; IV, inverse variance; CI, confidence interval; df, degrees of freedom.

TST-positive rate

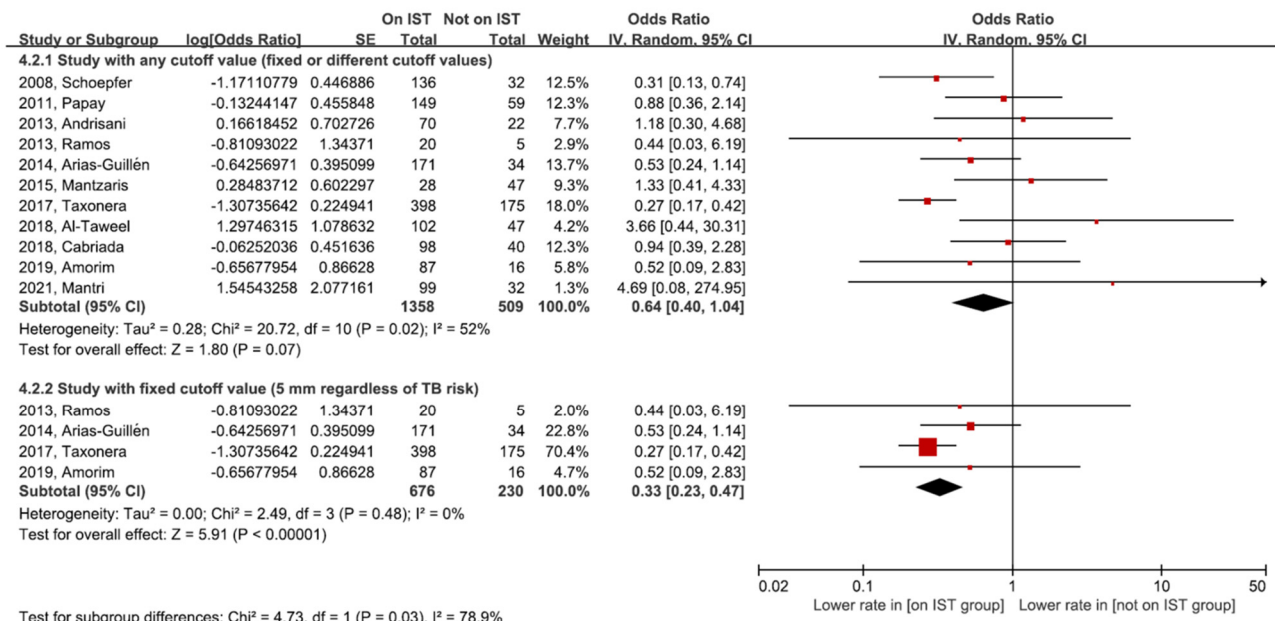


Figure S3. Sensitivity analysis for TST-positive rate. (A) All studies with any cutoff values of TST (both fixed cutoff value and different cutoff value according to TB risk), and (B) Studies with fixed cutoff value (5 mm) regardless of TB risk
TST, tuberculin skin test; IST, immunosuppressive treatment; TB, tuberculosis; SE, standard error; IV, inverse variance; CI, confidence interval; df, degrees of freedom.

IGRA-positive rate

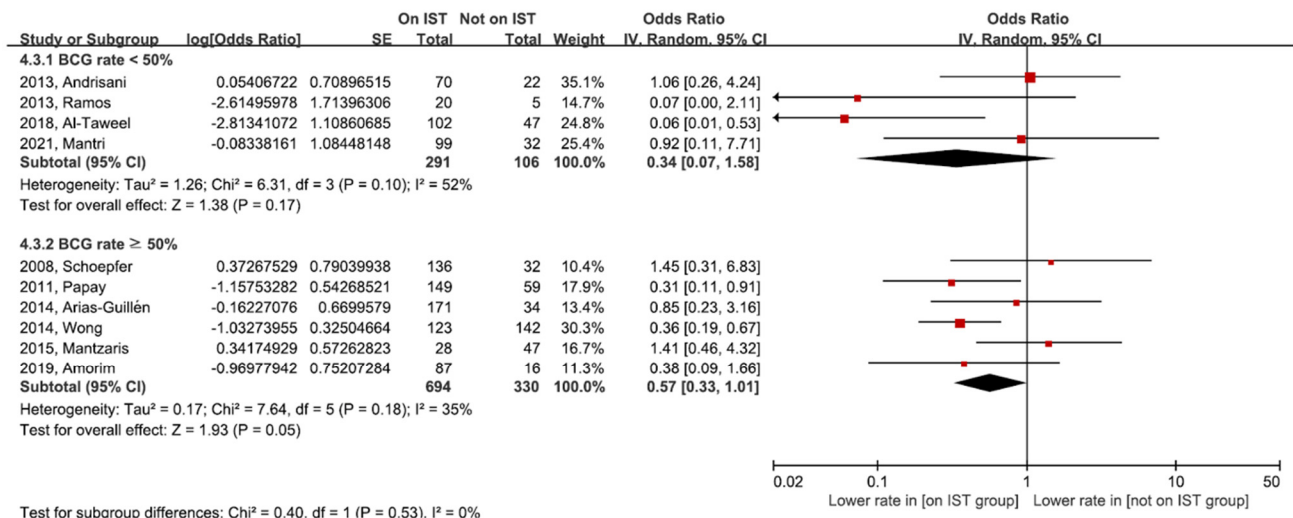


Figure S4. Sensitivity analysis for IGRA-positive rates according to BCG vaccination rate (< 50% vs. $\geq 50\%$).

IGRA, interferon γ release assay; IST, immunosuppressive treatment; BCG, Bacillus Calmette–Guérin; SE, standard error; IV, inverse variance; CI, confidence interval; df, degrees of freedom.

TST-positive rate

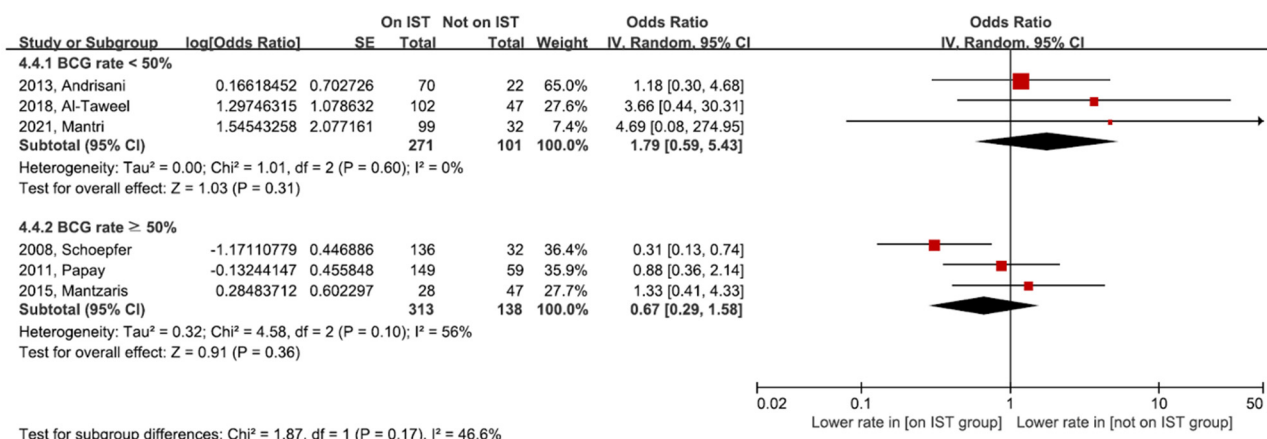


Figure S5. Sensitivity analysis for TST-positive rate according to BCG vaccination rate (< 50% vs. $\geq 50\%$).

TST, tuberculin skin test; IST, immunosuppressive treatment; TB, tuberculosis; SE, standard error; IV, inverse variance; CI, confidence interval; df, degrees of freedom.