

Article

## Creating S0s with Major Mergers: A 3D View

Miguel Querejeta <sup>1,\*</sup>, M. Carmen Eliche-Moral <sup>2</sup>, Trinidad Tapia <sup>3</sup>, Alejandro Borlaff <sup>4</sup>,  
Glenn van de Ven <sup>1</sup>, Mariya Lyubenova <sup>5</sup>, Marie Martig <sup>1</sup>, Jesús Falcón-Barroso <sup>4</sup>,  
Jairo Méndez-Abreu <sup>6</sup>, Jaime Zamorano <sup>2</sup> and Jesús Gallego <sup>2</sup>

<sup>1</sup> Max Planck Institute for Astronomy, Königstuhl 17, Heidelberg D-69117, Germany;  
E-Mails: glenn@mpia.de (G.V.); martig@mpia.de (M.M.)

<sup>2</sup> Departamento de Astrofísica y Ciencias de la Atmósfera, Universidad Complutense de Madrid,  
Madrid E-28040, Spain; E-Mails: mceliche@fis.ucm.es (M.C.E.M.); jzamorano@fis.ucm.es (J.Z.);  
j.gallego@fis.ucm.es (J.G.)

<sup>3</sup> Instituto de Astronomía, Universidad Nacional Autónoma de México, Ensenada BC-22800, Mexico;  
E-Mail: ttapia@astro.unam.mx

<sup>4</sup> Instituto de Astrofísica de Canarias, C/ Vía Láctea, La Laguna E-38200, Tenerife, Spain;  
E-Mails: asborlaff@iac.es (A.B.); jfalcon@iac.es (J.E.-B.)

<sup>5</sup> Kapteyn Astronomical Institute, University of Groningen, Postbus 800, Groningen NL-9700,  
The Netherlands; E-Mail: lyubenova@astro.rug.nl

<sup>6</sup> School of Physics and Astronomy, University St Andrews, North Haugh, St Andrews KY16 9SS, UK;  
E-Mail: jairomendezabreu@gmail.com

\* Author to whom correspondence should be addressed; E-Mail: querejeta@mpia-hd.mpg.de;  
Tel.: +49-6221-528-335; Fax: +49-6221-528-246.

Academic Editors: José Alfonso López Aguerri, Enrichetta Iodice and Alexei Moiseev

Received: 15 October 2015 / Accepted: 25 November 2015 / Published: 3 December 2015

---

**Abstract:** A number of simulators have argued that major mergers can sometimes preserve discs, but the possibility that they could explain the emergence of lenticular galaxies (S0s) has been generally neglected. In fact, observations of S0s reveal a strong structural coupling between their bulges and discs, which seems difficult to reconcile with the idea that they come from major mergers. However, in our recent papers we have used *N*-body simulations of binary mergers to show that, under favourable conditions, discs are first destroyed but soon regrow out of the leftover debris, matching observational photometric scaling relations. Additionally, we have shown how the merger scenario agrees with the recent discovery that S0s and most spirals are not compatible in an angular momentum–concentration plane. This important result from CALIFA constitutes a serious objection to the idea that spirals

transform into S0s mainly by fading (e.g., via ram-pressure stripping, as that would not explain the observed simultaneous change in  $\lambda_{\text{Re}}$  and concentration), but our simulations of major mergers do explain that mismatch. From such a 3D comparison we conclude that mergers must be a relevant process in the build-up of the current population of S0s.

**Keywords:** galaxies; lenticular; kinematics and dynamics; structure; evolution; interactions

---

## 1. Introduction

Ever since Hubble [3] placed them between ellipticals and spirals in his tuning-fork diagram, lenticular galaxies (or S0s) have been considered as a transition class and have not deserved too much attention until recently. However, lenticulars represent the majority of early-type galaxies in the local Universe [4], and as such they constitute one of the most important end-products of galaxy evolution.

Recent efforts have shown that S0s actually form a whole sequence, parallel to that of spirals, with bulge-to-total ratios and rotational support levels which span a large range of values, in a similar fashion to the change from early- to late-type spiral galaxies [5–7]. In this context, the question arises as to whether this parallelism in properties is the consequence of an underlying genetic connection; in other words, are the different types of lenticulars (S0a, S0b, S0c), the end-products of a morphological transformation starting from the corresponding spiral galaxies (Sa, Sb, Sc)?

This possibility has been successfully explored in the cluster regime as a consequence of ram pressure stripping (as a spiral galaxy falls into a cluster, the pressure exerted by the intra-cluster medium can expel most of the gas from the galaxy, suppressing star formation and transforming it into a passive lenticular; [8–11]). This would be a so-called fading mechanism, and it would indirectly contribute to explaining the observational morphology-density relation (e.g., [12]).

However, not all lenticulars live in clusters; today we know that probably at least half of the S0 population is located in the less dense environment of groups [13,14], where ram pressure is negligible, and mergers become increasingly relevant [15,16]. The aim of the talk given in the context of the European Week of Astronomy (EWASS) in Tenerife, June 2015, was to show how major mergers can transform spiral galaxies into lenticulars, in agreement with the tight photometric relations observed for S0s [5], and explaining the change in concentration and angular momentum found by CALIFA (van de Ven *et al.* in preparation). The presentation was mostly based on two recently published papers [1,2].

## 2. Creating Lenticulars With Major Mergers: Photometry

One of the strongest arguments given so far against a possible merger origin of lenticular galaxies are the photometric scaling relations observed in real S0s, particularly in terms of bulge-to-disc coupling. Laurikainen *et al.* [5] have found tight scaling relations between the size (and brightness) of bulges and discs in lenticular galaxies, measured through photometric structural decomposition of near-infrared images (*K*-band), and interpret them as the result of secular evolution, arguing that mergers would destroy that structural coupling. However, by performing analogous photometric decompositions on

the remnants of simulations of major galaxy mergers, we have found that under favourable conditions discs can be rebuilt during the last stages of the encounter, and the resulting disc galaxies do obey the photometric scaling relations of S0s.

The possibility of disc survival during major mergers of spiral galaxies had already been suggested by some simulations (e.g., [17,18]). However, ours is the first study in which the remnants are consistently translated into the phase space of observations (through mock images which take the appropriate, variable mass-to-light ratio into account, and performing the relevant photometric decompositions). We point the interested reader to Querejeta *et al.* [1] for details on the procedure and for exhaustive results and discussion, and we only attempt to provide a short summary next.

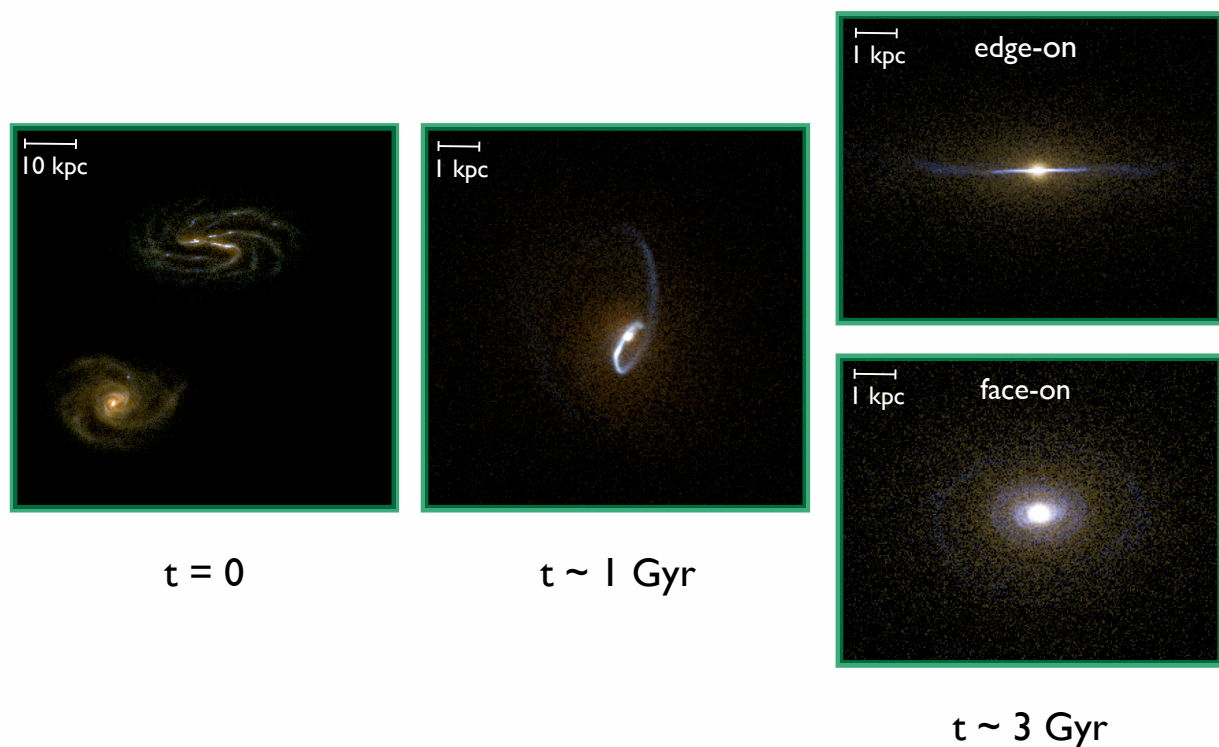
### 2.1. Simulations of Major Mergers and Mock Images

The public GalMer database (GalMer project: <http://galmer.obspm.fr>) provides a comprehensive suite of  $N$ -body numerical simulations of galaxy mergers, sampling a wide range of mass ratios, morphology, and orbital characteristics. With a spatial resolution of 0.28 kpc,  $\sim 10^5$  particles per galaxy, and a powerful TreeSPH code, the simulations carefully consider the effects of gas and star formation, with timescales spanning a total of 3–4 Gyr (up to  $\sim 1$  Gyr of relaxation time after the merger is completed); for more details, see [19].

We select the major mergers (mass ratios 1:1 to 1:3) from GalMer involving all possible combinations of two spiral progenitors (Sa, Sb, Sd) that result in a realistic and dynamically relaxed remnant. We have imposed some qualitative criteria on structural, kinematic, SFR, and gas content levels (to match typical observed values of S0s; Eliche-Moral *et al.* in preparation), and we have performed a visual morphological classification to identify which remnants would have been classified as S0-like by observers (*i.e.*, as disc galaxies without noticeable spiral arms). To do that, we have created mock photometric images of the resulting galaxies in several bands ( $B$ ,  $V$ ,  $R$ ,  $I$ , and  $K$ ), using a mass-to-light ratio which considers the stellar mass, age, and metallicity of each simulation particle according to Bruzual and Charlot [20], with a Chabrier IMF and the Padova evolutionary tracks. This provides us with a final sample of 67 S0-like remnants, on which we have performed bulge-disc-(bar) photometric decompositions analogous to observers.

### 2.2. Results on Photometric Scaling Relations

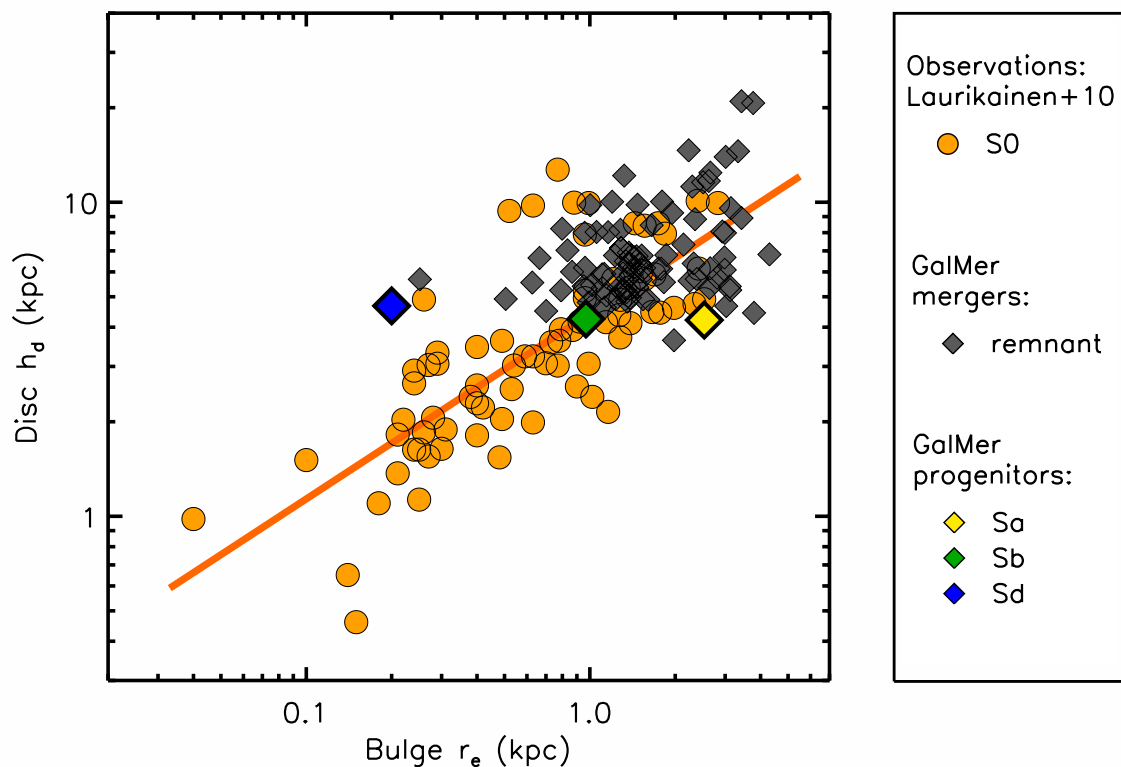
Except for pathological cases (such as some coplanar orbits), discs in the major mergers leading to S0s are first destroyed but quickly rebuilt during the last stages of the merging sequence. This is visually illustrated by Figure 1 (a major merger of two giant spirals, Sa and Sd), and demonstrated in a more qualitative way in Figure 7 from Querejeta *et al.* [1], where the time evolution of the stellar surface brightness profile for this same encounter is shown, compared to the analogous evolution for a minor merger. In the major merger, the original structure is mostly destroyed in the intermediate stages ( $t \sim 1$  Gyr), leading to spectacular tidal tails, but, eventually ( $t \sim 3$  Gyr), the whole system ends up relaxing into a passive disc with a small but clear bulge: a lenticular galaxy.



**Figure 1.** Three stages of the major merger between two giant spiral galaxies, Sa and Sd, simulated by GalMer (inclination =  $75^\circ$ , pericentre = 16 kpc,  $v_0 = 200$  km/s, prograde encounter). Shown are RGB synthetic images combining simulated K-band (**red**); SDSS g-band (**green**); and GALEX near-UV (**blue**).

Our photometric decompositions of these major merger remnants allow us to populate the same diagrams studied by observers. Figure 2 shows the relationship between scalelength of the disc and the effective radius of the bulge, which is one of the nine photometric planes studied in Querejeta *et al.* [1]. It demonstrates how, contrary to expectations, not only can discs survive major mergers, but also they can lead to lenticular galaxies in which disc and bulge sizes scale relative to each other, soon ( $\sim 1$  Gyr) after the merging process is completed. In other words, the observational scaling relation tells us that, for a given bulge size, only a certain range of disc sizes are allowed by nature in real lenticulars, and what we have found is that the S0s emerging from our major merger simulations have discs and bulges which are also coupled in that way, in agreement with photometric observations. The fact that the simulated major merger remnants only cover the top-right end of the plot on Figure 2 is not surprising, because the original spiral galaxies from the GalMer simulations are already very massive, and, by bringing two of them together, the total stellar mass (and, indirectly, the associated disc and bulge sizes) are expected to grow.

In Querejeta *et al.* [1], we show how the S0-like remnants from the major mergers that we have studied obey similarly tight relations in other photometric planes (involving bulge-to-total luminosity ratio, bulge effective radius, disc scalelength, total bulge and disc magnitude, and Sérsic index). This confirms the compatibility of the merger remnants with photometric observations of S0s; the reader is referred to the paper for those additional planes and more thorough discussion.



**Figure 2.** Highlight from Figure 5 in Querejeta *et al.* [1], making it clear how the major merger remnants that we have studied (**black diamonds**) overlap the observations of S0s (**orange**) from Laurikainen *et al.* [5]; observational spirals are not shown here for clarity purposes, but they display a larger scatter than lenticulars.

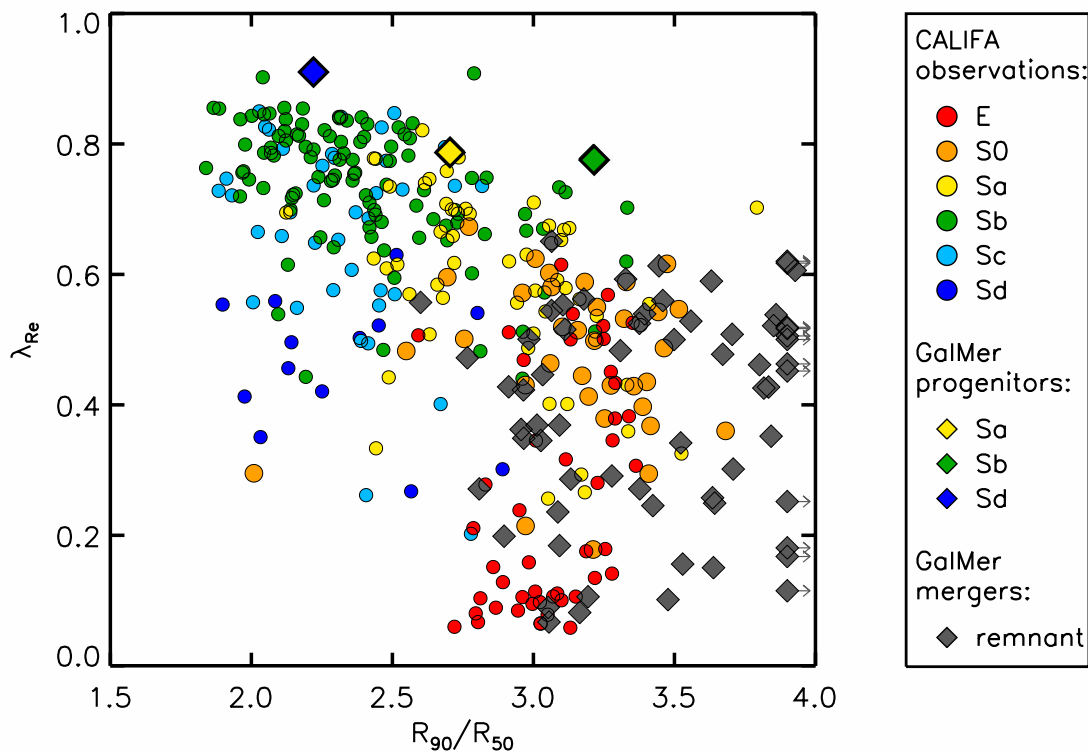
### 3. Creating Lenticulars with Major Mergers: Kinematics

The CALIFA team has recently presented a new diagnostic diagram, the  $\lambda_{Re}$ –concentration plane, which constitutes a strong objection to the idea that S0s are mostly faded spirals ([21], van de Ven *et al.* in preparation). Late-type spirals as a population (Sb, Sc, Sd) are clearly incompatible with S0s when both angular momentum ( $\lambda_{Re}$ ) and concentration ( $R_{90}/R_{50}$ ) are simultaneously taken into account. Simple fading is not expected to significantly change the angular momentum of the galaxy, which is why the CALIFA findings contradict the idea that most S0s are spirals which have had their gas removed.

Figure 3 compares the distribution of our remnant S0s with that of real galaxies from CALIFA in  $\lambda_{Re}$  versus  $R_{90}/R_{50}$ , showing that S0s resulting from the simulated major mergers are consistent with real lenticulars [2]. We calculate  $\lambda_e$  according to Emsellem *et al.* [22], out to the effective radius of the galaxy ( $R \leq R_e$ ). The light concentration is estimated via the Petrosian ratio  $R_{90}/R_{50}$ , defined as the ratio of the radii enclosing 90% and 50% of the Petrosian flux, measured on the 1D azimuthally averaged profile of our mock SDSS *r* band images. We assume that the simulated merger remnants are observed at the median distance of the 300 CALIFA galaxies in Falcón-Barroso *et al.* (in preparation),  $D_{\text{median}} = 67$  Mpc, and we simulate the same spatial resolution and field of view as that survey.

In the  $\lambda_{Re}$ –concentration plane (Figure 3), Sb and Sc galaxies observed by CALIFA accumulate towards the top-left corner; Sa galaxies are more scattered, extending towards the area populated by

S0 and E galaxies in the bottom-right. This first CALIFA sample has a very limited number of Sd galaxies, but their overlap with S0s is also minimal. From this plot, we conclude that major mergers can make spiral progenitors evolve from the region of high  $\lambda_{\text{Re}}$ –low concentration into realistic S0 galaxies of lower  $\lambda_{\text{Re}}$  and higher concentration, following a trend analogous to that observed by CALIFA. Even though many Sa galaxies are compatible with S0s in this plane, the change is very significant from later-type spirals (Sb, Sc, Sd) into S0s, and this is where major mergers are required (or any other mechanisms capable of changing both the angular momentum and the concentration).



**Figure 3.** Stellar angular momentum ( $\lambda_{\text{Re}}$ ) plotted against concentration ( $R_{90}/R_{50}$ ) for the GalMer simulations (original models and merger remnants), in comparison to CALIFA galaxies. All the parameters correspond to an edge-on view.

We briefly summarise some caveats next. It is true that a significant number of our S0 merger remnants are outliers in terms of concentration. However, we understand that this is because we are looking at the remnants in the simulations short after coalescence (due to the total simulated time of  $\sim 4$  Gyr, so typically  $\sim 1$  Gyr after full merger). Provided that we consider a mass-to-light ratio which takes the age and metallicity of the stellar particles in the simulation into account, a central starburst (which is very often associated with mergers, see [23]) will lead to a very high light concentration due to young stars even  $\sim 1$  Gyr after the merger has finished, which reflects on the  $R_{90}/R_{50}$  parameter. In this context, it is not surprising that the most extreme concentration outliers ( $R_{90}/R_{50} > 4.5$ ) correspond to the encounters involving the highest initial gas fractions ( $> 20\%$ ), and the highest fractions of merger-triggered star formation (new stars  $> 15\%$  of total stellar mass). Our paper emphasises the importance of choosing an appropriate mass-to-light ratio when translating simulations of galaxy mergers into the observational



parameter space, especially when it comes to calculating concentration parameters. Finally, the fact that the progenitor Sa is less concentrated than the Sb galaxy is not necessarily unrealistic (there is a considerable number of observational Sa datapoints with lower  $R_{90}/R_{50}$  than a many Sb galaxies); bulge-to-total ratio and light concentration are often invoked as a proxy for morphology, but there is not a one-to-one match from one to the other (see e.g., [24]).

#### 4. Concluding Remarks

Some simulators had already suggested that major mergers do not always necessarily destroy discs ([17,18,25–28]; but see the doubts raised by Bournaud *et al.* [29] about the need to include supersonic turbulence in such simulations of gas-rich mergers). Here, we have explored the possibility that major mergers could lead to the creation of lenticular galaxies using  $N$ -body numerical simulations of dissipative binary galaxy mergers from the GalMer database.

In Querejeta *et al.* [1] we proved that not only can discs survive major mergers, but also they can produce remnants with bulge-disc coupling in perfect agreement with observations of S0s (e.g., [5]). One of those planes (disc scaleheight versus bulge effective radius) has been presented in Figure 2 and discussed in Section 2.2, proving that the S0-like remnants from the major merger simulations have discs and bulges that obey analogous scaling relations to those observed in real lenticulars.

In Querejeta *et al.* [2] we showed that, in addition, the systematic offset between spirals and S0s in the angular momentum ( $\lambda_{Re}$ )—concentration ( $R_{90}/R_{50}$ ) plane reported by the CALIFA team can be explained by major mergers. The main figure from the paper has been reproduced here (Figure 3) and briefly commented in Section 3. Additionally, using the same numerical simulations, we have recently found that those S0-like remnants have discs with antitruncations in agreement with those observed in real S0s (matching their strong scaling relations, see Borlaff *et al.* [30]). If we combine all these photometric and kinematic results, major mergers appear as a viable mechanism to transform spirals into lenticulars.

Naturally, this does not mean that major mergers are responsible for the emergence of all lenticular galaxies in the local Universe, and the relative contribution of (major) mergers is probably strongly dependent on environment. Potentially, mergers could also join forces with other mechanisms, such as “harassment” [31], or starvation of star formation (e.g., [32]), perhaps playing the role of pre-processing lenticulars before they fall into clusters (e.g., [33]). Recently, it has also been proposed that disc galaxies could first have emerged in the form of S0s at  $z > 2$ , with a fraction of them transforming later on into spirals via gas accretion [34], which might explain observational age and abundance measurements in isolated lenticulars [35]. In the near future, we plan to extend our investigation to mergers of other mass ratios, setting our results in a cosmological context, considering links with other observational results, and further exploring the synergies between simulations of galaxy mergers and the 3D observations from CALIFA.

#### Acknowledgments

The authors would like to acknowledge the two anonymous referees for constructive feedback, and the GalMer team for creating such a powerful tool, with especial thanks to Paola Di Matteo for her kind

support with the database. Miguel Querejeta, Glenn van de Ven and Jesús Falcón-Barroso acknowledge financial support to the Detailed Anatomy of Galaxies (DAGAL) network from the People Programme (Marie Curie Actions) of the European Union's Seventh Framework Programme FP7/2007- 2013/ under REA grant agreement number PITN-GA-2011-289313. M. Carmen Eliche-Moral acknowledges support from the Spanish Ministry of Economy and Competitiveness (MINECO) under projects AYA2012-31277 and AYA2013-48226-C3-1-P. Jairo Méndez-Abreu acknowledges support from the European Research Council Starting Grant (SEDmorph; P.I.V. Wild).

### Author Contributions

The two papers that these conference proceedings are based on [1,2] have been lead and written by the first author, Miguel Querejeta, while all co-authors listed here have substantially contributed to the reported work.

### Conflicts of Interest

The authors declare no conflict of interest.

### References

1. Querejeta, M.; Eliche-Moral, M.C.; Tapia, T.; Borlaff, A.; Rodríguez-Pérez, C.; Zamorano, J.; Gallego, J. Formation of S0 galaxies through mergers. Bulge-disc structural coupling resulting from major mergers. *Astron. Astrophys.* **2015**, *573*, A78.
2. Querejeta, M.; Eliche-Moral, M.C.; Tapia, T.; Borlaff, A.; van de Ven, G.; Lyubenova, M.; Martig, M.; Falcón-Barroso, J.; Méndez-Abreu, J. Formation of S0 galaxies through mergers. Explaining angular momentum and concentration change from spirals to S0s. *Astron. Astrophys.* **2015**, *579*, L2.
3. Hubble, E.P. *Realm of the Nebulae*; Yale University Press: New Haven, CT, USA, 1936.
4. De Vaucouleurs, G.; De Vaucouleurs, A.; Corwin, H.G., Jr.; Buta, R.J.; Paturel, G.; Fouqué, P. *Third Reference Catalogue of Bright Galaxies. Volume I: Explanations and references. Volume II: Data for galaxies between 0h and 12h. Volume III: Data for galaxies between 12h and 24h*; Springer: New York, NY, USA, 1991.
5. Laurikainen, E.; Salo, H.; Buta, R.; Knapen, J.H.; Comerón, S. Photometric scaling relations of lenticular and spiral galaxies. *Mon. Not. R. Astron. Soc.* **2010**, *405*, 1089–1118.
6. Cappellari, M.; Emsellem, E.; Krajnović, D.; McDermid, R.M.; Serra, P.; Alatalo, K.; Blitz, L.; Bois, M.; Bournaud, F.; Bureau, M.; *et al.* The ATLAS<sup>3D</sup> project—VII. A new look at the morphology of nearby galaxies: The kinematic morphology-density relation. *Mon. Not. R. Astron. Soc.* **2011**, *416*, 1680–1696.
7. Kormendy, J.; Bender, R. A Revised Parallel-sequence Morphological Classification of Galaxies: Structure and Formation of S0 and Spheroidal Galaxies. *Astrophys. J. Suppl.* **2012**, *198*, 2.
8. Crowl, H.H.; Kenney, J.D.P.; van Gorkom, J.H.; Vollmer, B. Dense Cloud Ablation and Ram Pressure Stripping of the Virgo Spiral NGC 4402. *Astron. J.* **2005**, *130*, 65–72.



9. Aragón-Salamanca, A.; Bedregal, A.G.; Merrifield, M.R. Measuring the fading of S0 galaxies using globular clusters. *Astron. Astrophys.* **2006**, *458*, 101–105.
10. Crawl, H.H.; Kenney, J.D.P. The Stellar Populations of Stripped Spiral Galaxies in the Virgo Cluster. *Astron. J.* **2008**, *136*, 1623–1644.
11. Maltby, D.T.; Aragón-Salamanca, A.; Gray, M.E.; Hoyos, C.; Wolf, C.; Jogee, S.; Böhm, A. The environmental dependence of the structure of galactic discs in STAGES S0 galaxies: Implications for S0 formation. *Mon. Not. R. Astron. Soc.* **2015**, *447*, 1506–1530.
12. Dressler, A. Galaxy morphology in rich clusters—Implications for the formation and evolution of galaxies. *Astrophys. J.* **1980**, *236*, 351–365.
13. Wilman, D.J.; Oemler, Jr., A.; Mulchaey, J.S.; McGee, S.L.; Balogh, M.L.; Bower, R.G. Morphological Composition of  $z$  0.4 Groups: The Site of S0 Formation. *Astrophys. J.* **2009**, *692*, 298–308.
14. Bekki, K.; Couch, W.J. Transformation from spirals into S0s with bulge growth in groups of galaxies. *Mon. Not. R. Astron. Soc.* **2011**, *415*, 1783–1796.
15. Mazzei, P.; Marino, A.; Rampazzo, R. The NUV- $r$  versus  $M_r$  Plane as a Tracer of Early-type Galaxy Evolution in the USGC U376 and LGG 225 Groups. *Astrophys. J.* **2014**, *782*, 53.
16. Mazzei, P.; Marino, A.; Rampazzo, R.; Galletta, G.; Bettoni, D. Catching spiral - S0 transition in groups. Insights from SPH simulations with chemo-photometric implementation. *Adv. Space Res.* **2014**, *53*, 950–962.
17. Springel, V.; Hernquist, L. Formation of a Spiral Galaxy in a Major Merger. *Astrophys. J. Lett.* **2005**, *622*, L9–L12.
18. Hopkins, P.F.; Cox, T.J.; Younger, J.D.; Hernquist, L. How do Disks Survive Mergers? *Astrophys. J.* **2009**, *691*, 1168–1201.
19. Chilingarian, I.V.; di Matteo, P.; Combes, F.; Melchior, A.L.; Semelin, B. The GalMer database: Galaxy mergers in the virtual observatory. *Astron. Astrophys.* **2010**, *518*, A61.
20. Bruzual, G.; Charlot, S. Stellar population synthesis at the resolution of 2003. *Mon. Not. R. Astron. Soc.* **2003**, *344*, 1000–1028.
21. Falcón-Barroso, J.; Lyubenova, M.; Van de Ven, G. Angular Momentum Across the Hubble Sequence From the CALIFA Survey. In *IAU Symposium S311: Galaxy Masses as Constraints of Formation Models*; Cappellari, M., Courteau, S., Eds.; Cambridge University Press: Cambridge, UK, 2015; pp. 78–81.
22. Emsellem, E.; Cappellari, M.; Krajnović, D.; Alatalo, K.; Blitz, L.; Bois, M.; Bournaud, F.; Bureau, M.; Davies, R.L.; Davis, T.A.; *et al.* The ATLAS<sup>3D</sup> project - III. A census of the stellar angular momentum within the effective radius of early-type galaxies: Unveiling the distribution of fast and slow rotators. *Mon. Not. R. Astron. Soc.* **2011**, *414*, 888–912.
23. Barnes, J.E.; Hernquist, L.E. Fueling starburst galaxies with gas-rich mergers. *Astrophys. J. Lett.* **1991**, *370*, L65–L68.
24. Graham, A.W.; Worley, C.C. Inclination- and dust-corrected galaxy parameters: Bulge-to-disc ratios and size-luminosity relations. *Mon. Not. R. Astron. Soc.* **2008**, *388*, 1708–1728.
25. Barnes, J.E. Formation of gas discs in merging galaxies. *Mon. Not. R. Astron. Soc.* **2002**, *333*, 481–494.

26. Robertson, B.; Yoshida, N.; Springel, V.; Hernquist, L. Disk Galaxy Formation in a  $\Lambda$  Cold Dark Matter Universe. *Astrophys. J.* **2004**, *606*, 32–45.
27. Robertson, B.; Bullock, J.S.; Cox, T.J.; Di Matteo, T.; Hernquist, L.; Springel, V.; Yoshida, N. A Merger-driven Scenario for Cosmological Disk Galaxy Formation. *Astrophys. J.* **2006**, *645*, 986–1000.
28. Moster, B.P.; Macciò, A.V.; Somerville, R.S.; Naab, T.; Cox, T.J. The effects of a hot gaseous halo in galaxy major mergers. *Mon. Not. R. Astron. Soc.* **2011**, *415*, 3750–3770.
29. Bournaud, F.; Chapon, D.; Teyssier, R.; Powell, L.C.; Elmegreen, B.G.; Elmegreen, D.M.; Duc, P.A.; Contini, T.; Epinat, B.; Shapiro, K.L. Hydrodynamics of High-redshift Galaxy Collisions: From Gas-rich Disks to Dispersion-dominated Mergers and Compact Spheroids. *Astrophys. J.* **2011**, *730*, 4.
30. Borlaff, A.; Eliche-Moral, M.C.; Rodríguez-Pérez, C.; Querejeta, M.; Tapia, T.; Pérez-González, P.G.; Zamorano, J.; Gallego, J.; Beckman, J. Formation of S0 galaxies through mergers. Antitruncated stellar discs resulting from major mergers. *Astron. Astrophys.* **2014**, *570*, A103.
31. Moore, B.; Katz, N.; Lake, G.; Dressler, A.; Oemler, A. Galaxy harassment and the evolution of clusters of galaxies. *Nature* **1996**, *379*, 613–616.
32. Shaya, E.J.; Tully, R.B. The angular momentum content of galaxies. *Astrophys. J.* **1984**, *281*, 56–66.
33. Head, J.T.C.G.; Lucey, J.R.; Hudson, M.J.; Smith, R.J. Dissecting the red sequence: The bulge and disc colours of early-type galaxies in the Coma cluster. *Mon. Not. R. Astron. Soc.* **2014**, *440*, 1690–1711.
34. Sil’chenko, O.K.; Proshina, I.S.; Shulga, A.P.; Koposov, S.E. Ages and abundances in large-scale stellar discs of nearby S0 galaxies. *Mon. Not. R. Astron. Soc.* **2012**, *427*, 790–805.
35. Katkov, I.Y.; Kniazev, A.Y.; Sil’chenko, O.K. Kinematics and Stellar Populations in Isolated Lenticular Galaxies. *Astron. J.* **2015**, *150*, 24.