



Figure S1. Device for starvation research and RNAi experiment.

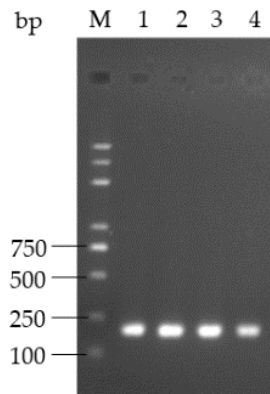


Figure S2. Detection of the *Bta06987*

```

atg act tgt cgc aca att ctg gtg tta ctc aca aat gca atc ctc ctg tcc gct ctg tgc
M T C R T I L V L L T N A I L L S A L C
tac gcc cag gtc aac ttc tcg ccc acg tgg ggc aag aga acc gtc acg caa gaa gaa tgc
Y A Q V N F S P T W G K R T V T Q E E C
acc tcc aag cct tcc atg gaa ctt ctc atg tat tta tac aag atg atc gag aat gag gcg
T S K P S M E L L M Y L Y K M I E N E A
caa aaa ata tca gat tgt gag aag ttc aga agt taa
Q K I S D C E K F R S -

```

Figure S3. DNA sequences of *Bta06987* and predicted structures of neuropeptide precursor. Predicted signal peptides (highlighted in yellow), cleavage signals (red), putative bioactive mature peptides (light blue).

Table S1. The sequence of *Bta06987*

The sequence of <i>Bta06987</i>	ATGACTTGTCGCACAATTCTGGTGTTA CTCACAAATGCAATCCTCCTGTCCGCT CTGTGCTACGCCCAGGTCAACTTCTC GCCCA CGTGGGGCAAGAGAACCGTCACGCA AGAAGAATGCACCTCCAAGCCTTCCA TGGAATTCTCATGTATTTATACAAGA TGATCGA GAATGAGGCGCAAAAAATATCAGATT GTGAGAAGTTCAGAAGTTAA
---------------------------------	---