

**Supplementary Materials:** The following are available online at [www.mdpi.com/xxx/s1](http://www.mdpi.com/xxx/s1), Table S1: Patient characteristics; Figure S1: Comparison virulome of the *E. coli* strains from P1 (Eco\_b1, Eco\_r1), J53 and J53 after plasmid transfer (J53pEco\_b1); Figure S2: Content of the IncFII\_1 plasmid reconstructed by comparison of the genetic content of Eco\_b1 and Eco\_b1cured.

	age (years)	gender
<i>P1</i>	60	female
<i>P2</i>	28	female
<i>P3</i>	71	female
<i>P4</i>	71	male
<i>P5</i>	64	male

**Table S1.** Patient characteristics.

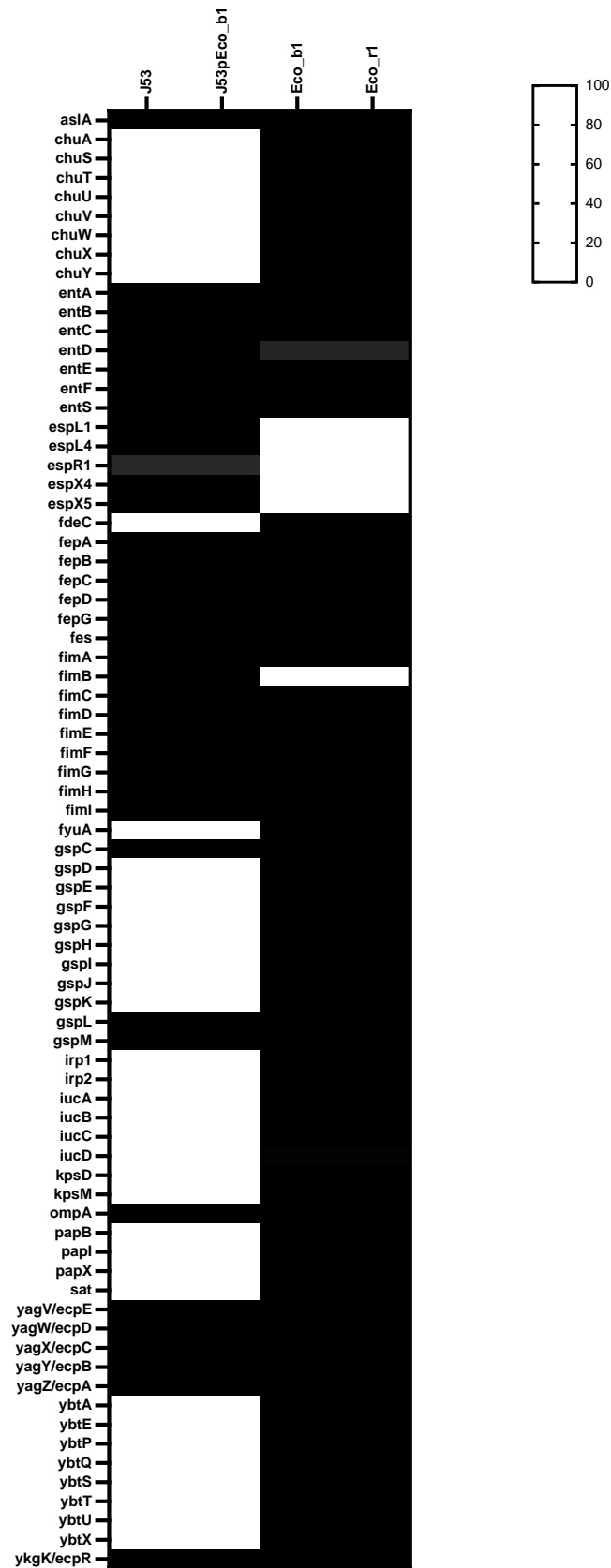
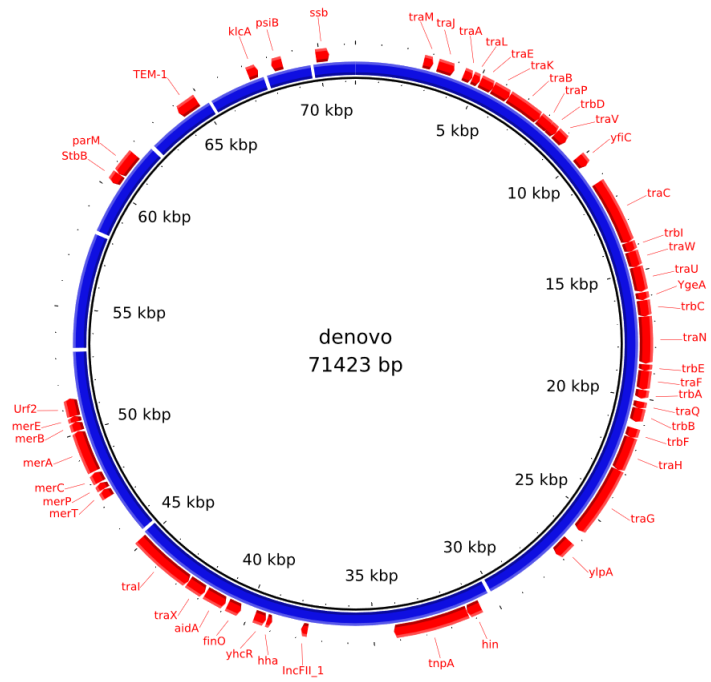


Figure S1. Comparison virulome of the *E. coli* strains from P1 (Eco\_b1, Eco\_r1), J53 and J53 after plasmid transfer (J53pEco\_b1).



**Figure S2.** Content of the IncFII\_1 plasmid reconstructed by comparison of the genetic content of Eco\_b1 and Eco\_b1cured. Each contigs absent from Eco\_b1cured were concatenated to evaluate the plasmid content.