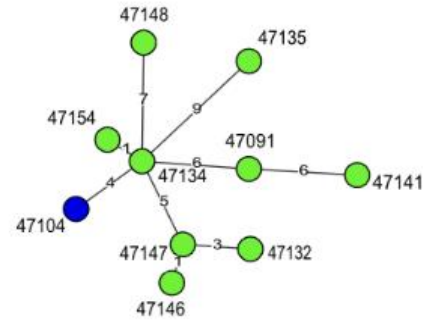
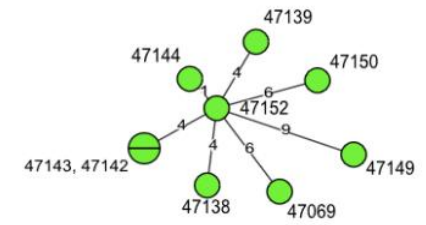


A



B



C

FIGURE S1. Minimum spanning tree (MST) analysis based on cgMLST profiles (CTs) of 45 *L. monocytogenes* belonging to three CTs: A, CT375; B, CT4325; C, CT4380. The different colors indicate isolate source (green, ready-to-eat food; red, raw meat; blue, food production environments). Numbers on the connecting lines show alleles differences between adjacent nodes (CTs). The numbers next to circles show ID of the currently tested *L. monocytogenes* strains.