

Figure S1: Morphology of isolates of *B. sorokiniana* collected from different geographical regions of India and grown on PDA plates

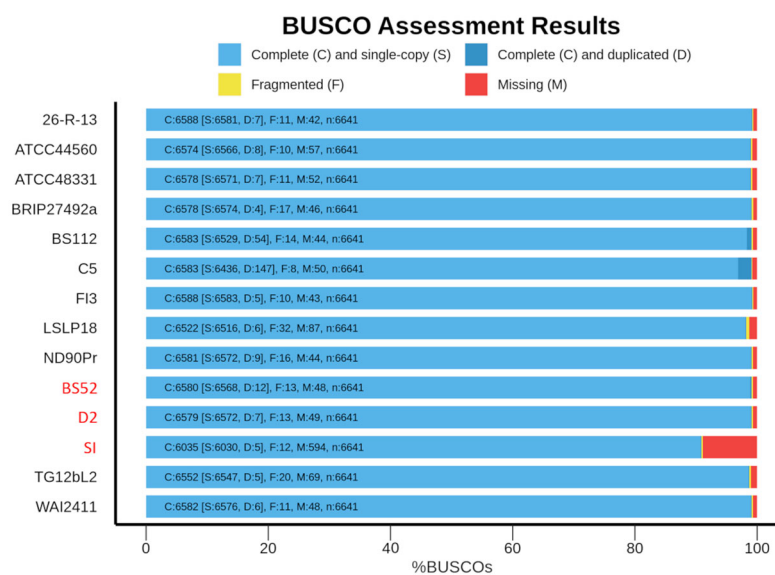


Figure S2: BUSCO assessment results of genome completeness of BS52, D2, and SI compared to 11 genome sequences, including seven strains belonging to five *Bipolaris* species (26-R-13 (*B. zeicola*), ATCC44560 (*B. oryzae*), ATCC48331 (*B. maydis*), C5 (*B. maydis*), FI3 (*B. victoriae*), LSLP18 (*B. cookei*), and TG12bL2 (*B. oryzae*)) and four *Bipolaris sorokiniana* strains (BRIP27492A, BS112, ND90Pr, and WAI2411)

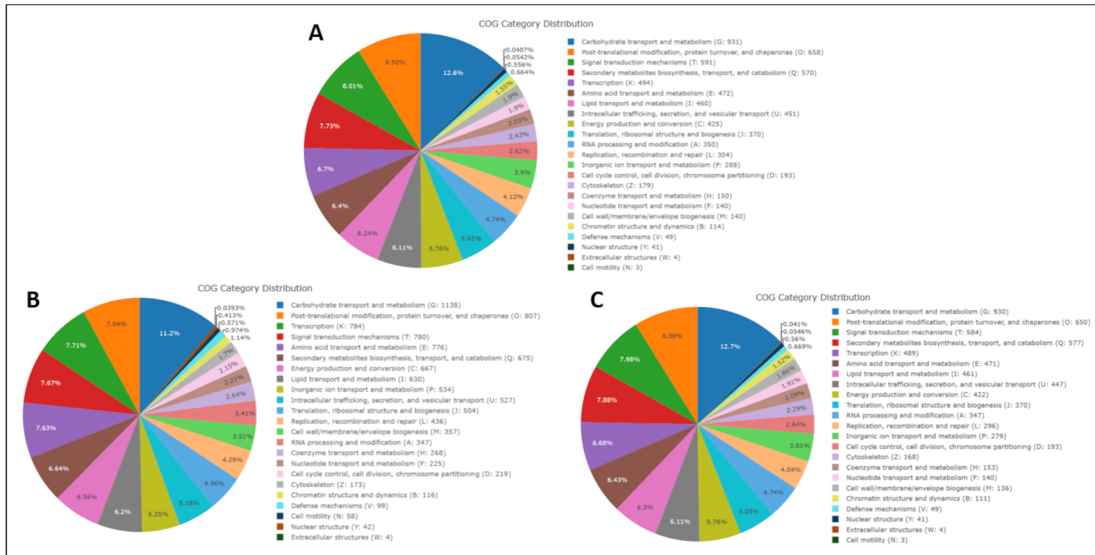


Figure S3: COGs category distribution in isolates (A) BS52, (B) D2, and (C) SI