

Supplementary data

# In Vitro Anthelmintic Efficacy of Aqueous Pomegranate (*Punica granatum* L.) Extracts against Gastrointestinal Nematodes of Sheep

Fabio Castagna <sup>1,\*</sup>, Domenico Britti <sup>1</sup>, Manuela Oliverio <sup>1</sup>, Antonio Bosco <sup>2</sup>, Sonia Bonacci <sup>1</sup>, Giuseppe Iriti <sup>1</sup>, Monica Ragusa <sup>3</sup>, Vincenzo Musolino <sup>1,\*</sup>, Laura Rinaldi <sup>2</sup>, Ernesto Palma <sup>1,†</sup> and Vincenzo Musella <sup>1,†</sup>

<sup>1</sup> Department of Health Sciences, University of Catanzaro “Magna Græcia”, CISVetSUA, 88100 Catanzaro, Italy; britti@unicz.it (D.B.); m.oliverio@unicz.it (M.O.); s.bonacci@unicz.it (S.B.); giuseppeiriti94@gmail.com (G.I.); palma@unicz.it (E.P.); musella@unicz.it (V.M.)

<sup>2</sup> Department of Veterinary Medicine and Animal Productions, University of Naples Federico II, 80137 Napoli, Italy; boscoant@tiscali.it (A.B.); lrinaldi@unina.it (L.R.)

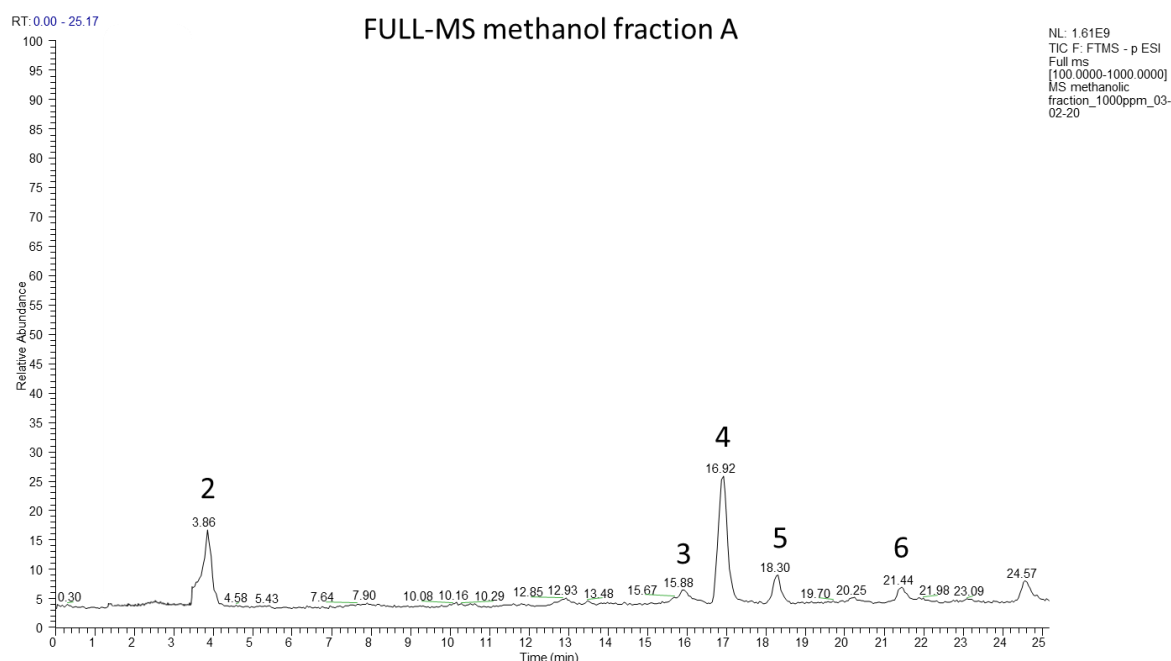
<sup>3</sup> Department of Experimental and Clinical Medicine, University of Catanzaro Magna Græcia, CISVetSUA, 88100 Catanzaro, Italy; m.ragusa@unicz.it

\* Correspondence: fabiocastagna@unicz.it (F.C.); v.musolino@unicz.it (V.M.)

† These authors equally contributed in this work.

Received: 12 November 2020; Accepted: 16 December 2020; Published: 18 December 2020

**Figure S1.** Full LC-HRMS ESI(-) of methanol fraction A



**Figure S2.** Full LC-HRMS ESI(-) of insoluble residue fraction B

## FULL-MS insoluble residue B

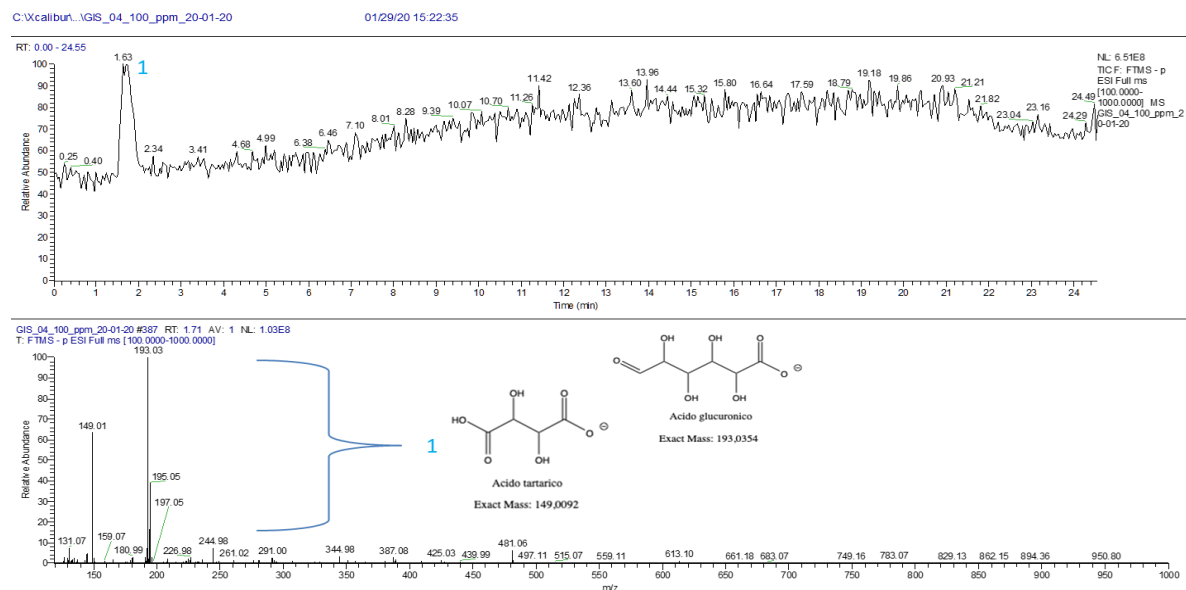
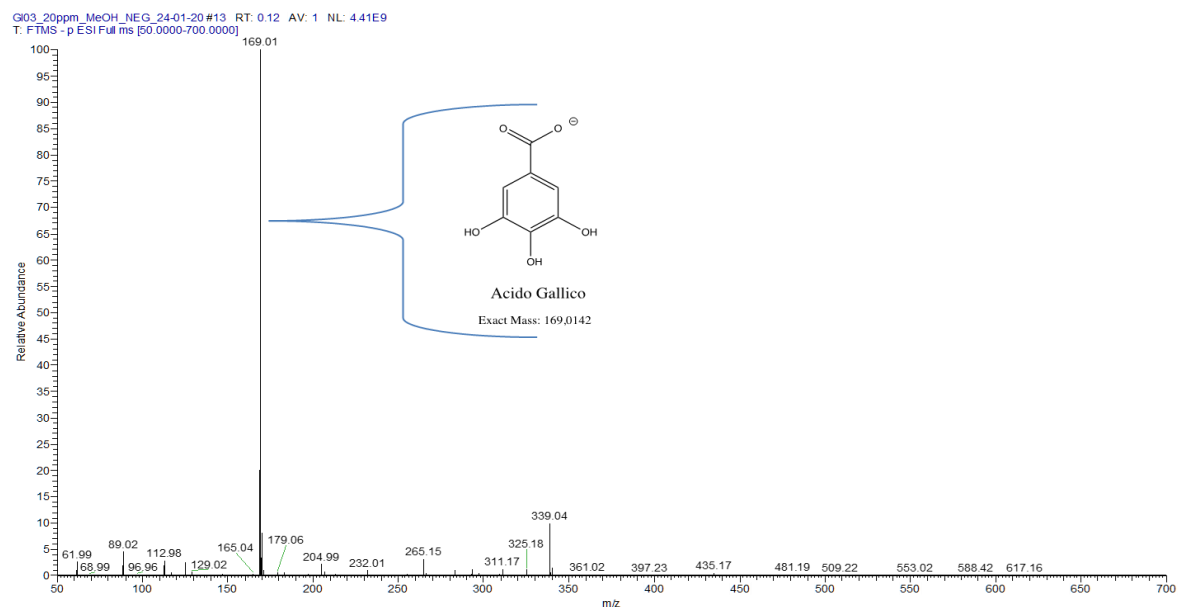


Figure S3. HRMS ESI(-) of gallic acid fraction C

## ESI(-)/HRMS of gallic acid C



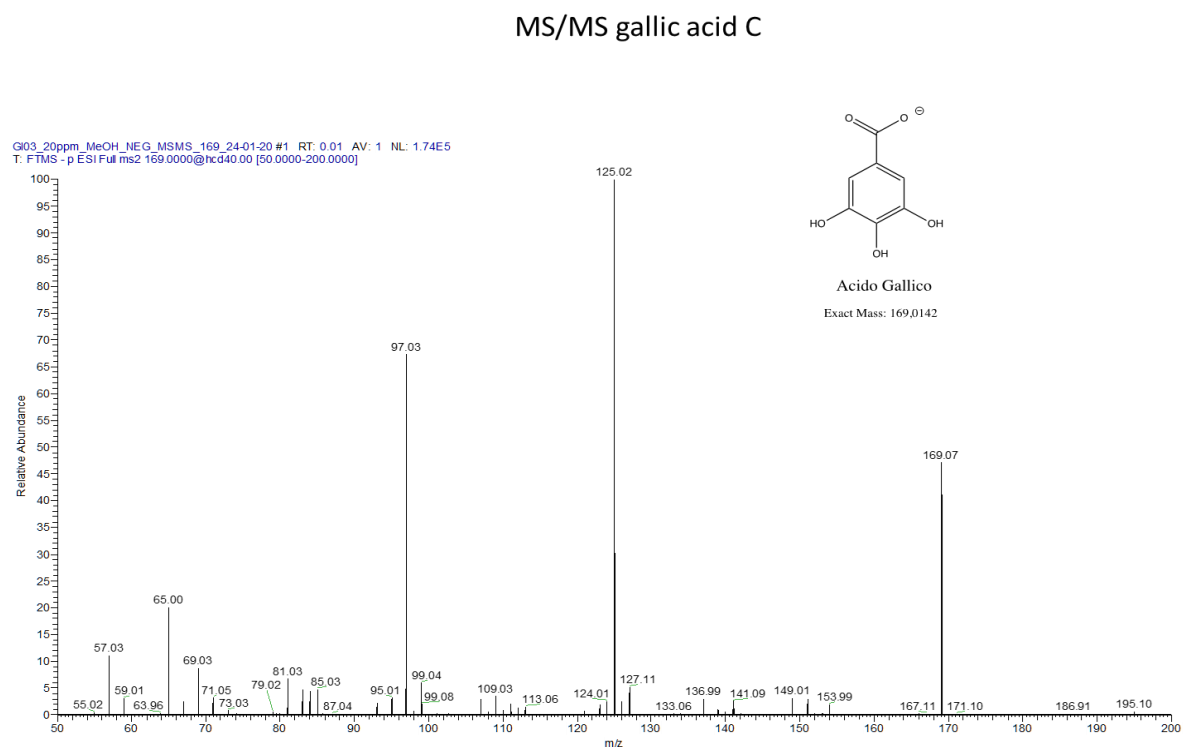
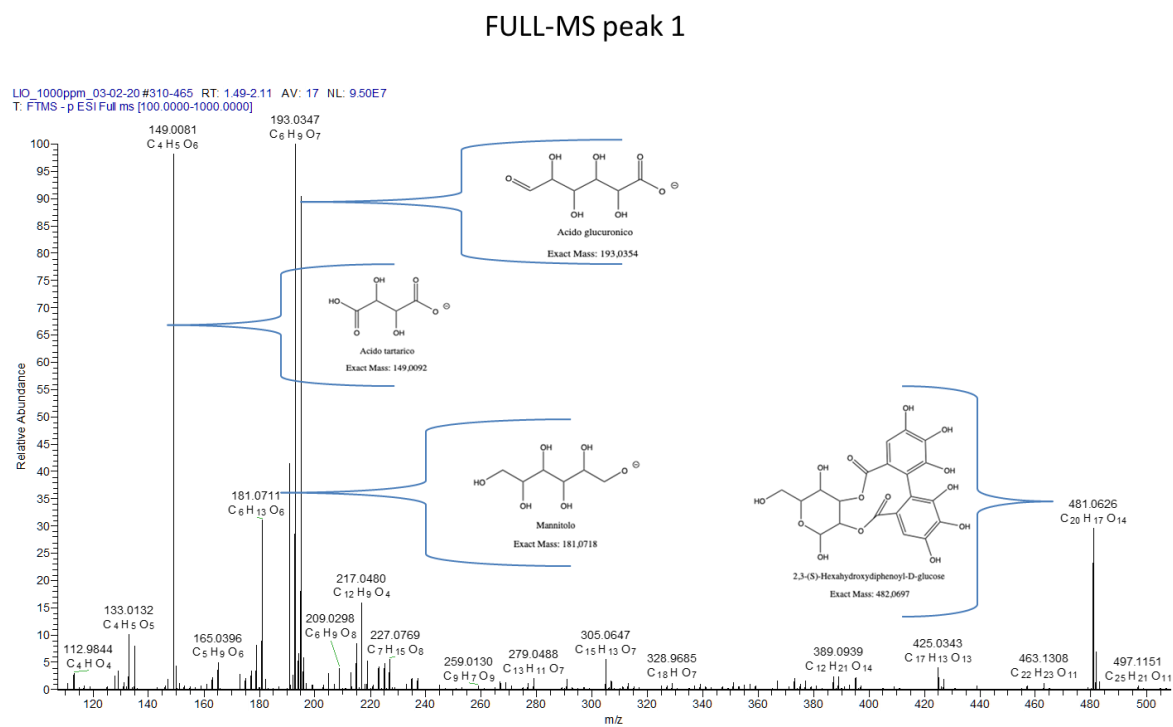
**Figure S4.** HRMS/MS ESI(-) of gallic acid fraction C**Figure S5.** HRMS/MS ESI(-) of gallic acid fraction C

Figure S6. HRMS/MS ESI(-) of peak 1

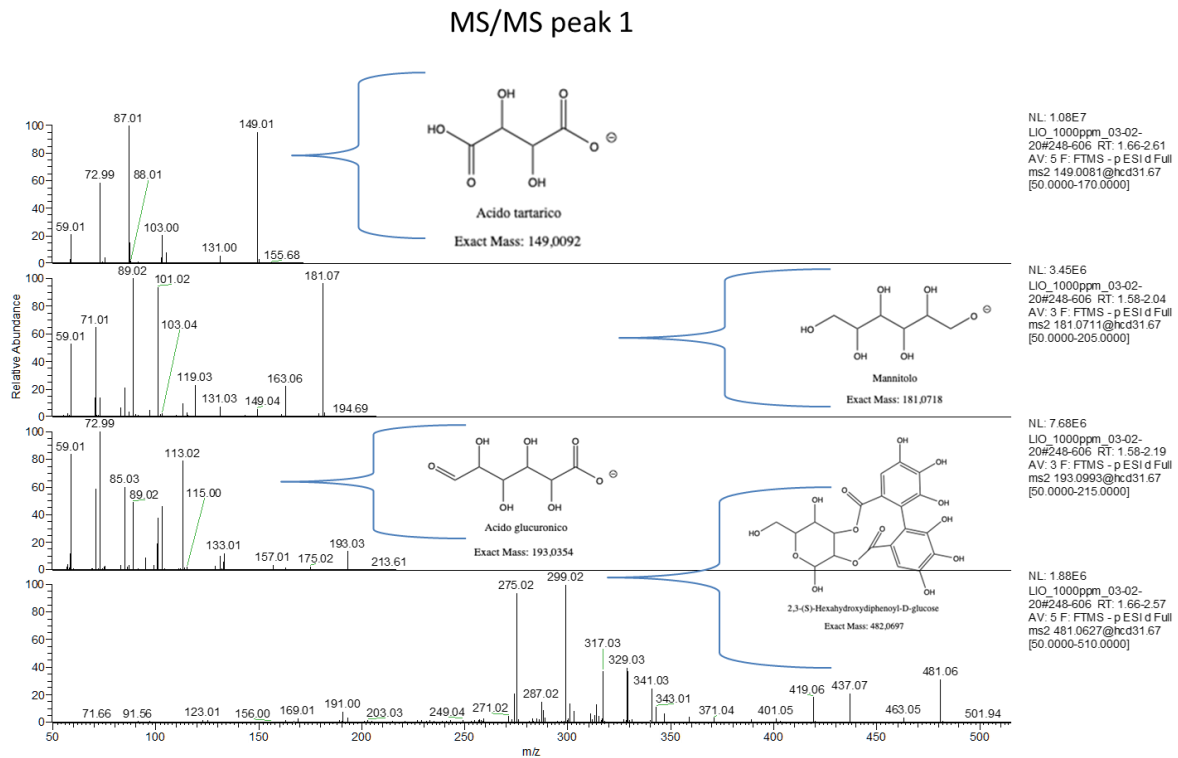


Figure S7. Full LC-HRMS ESI(-) of peak 2

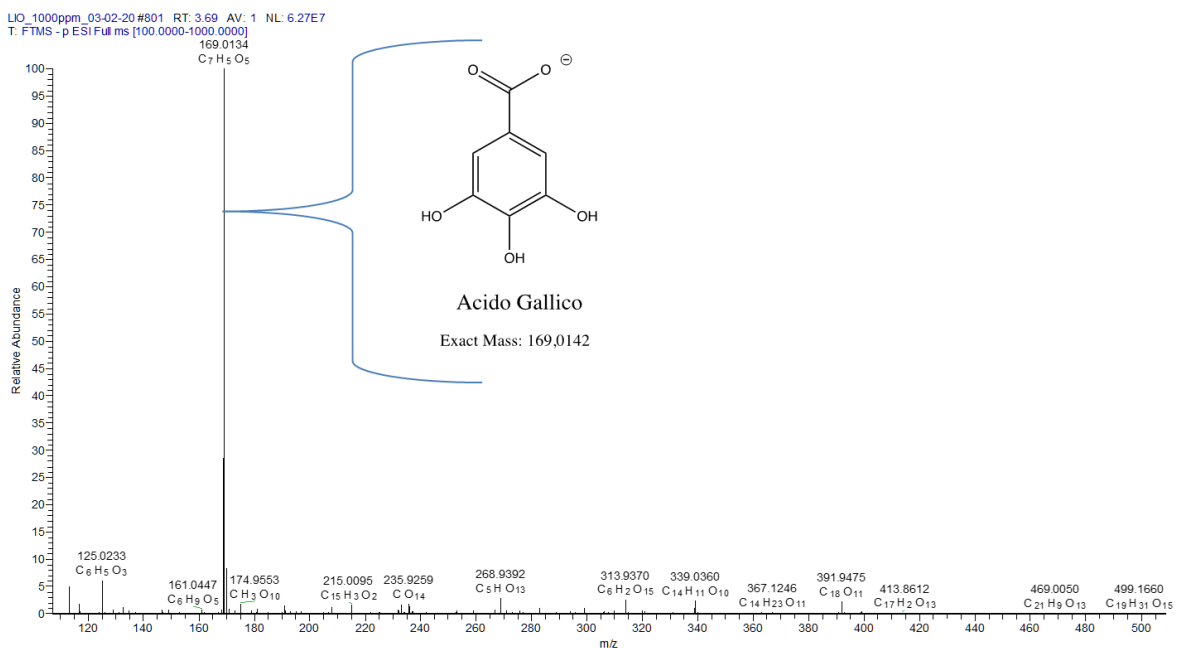
**FULL-MS peak 2**

Figure S8. HRMS/MS ESI(-) of peak 2

## MS/MS peak 2

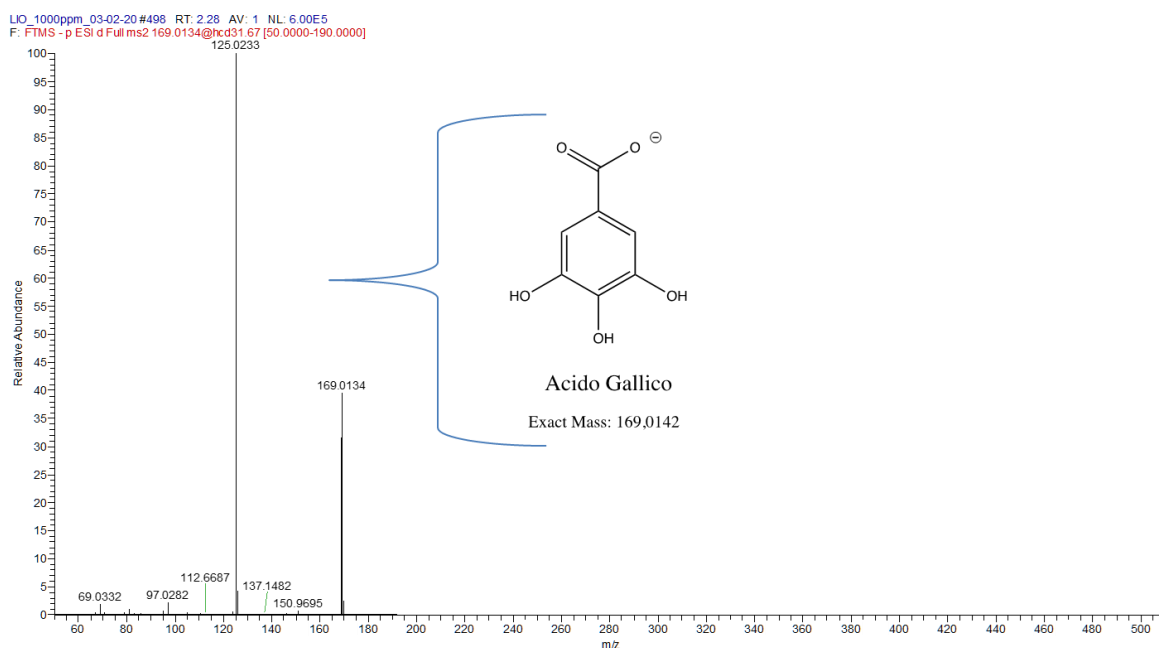


Figure S9. Full LC-HRMS ESI(-) of peak 3

## FULL-MS peak 3

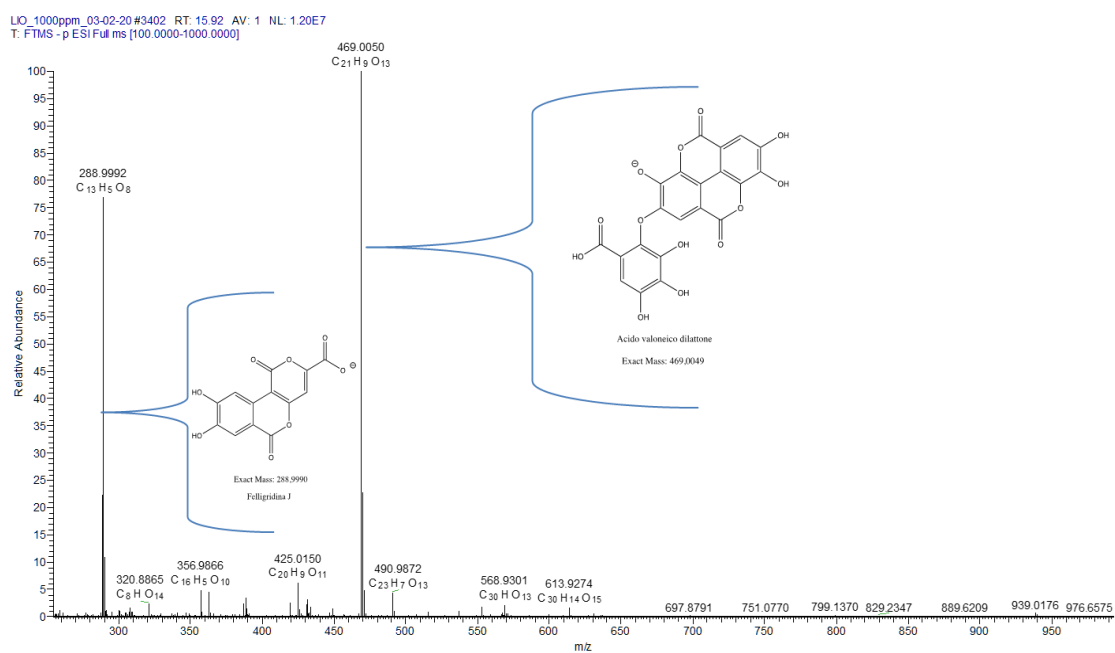


Figure S10. HRMS/MS ESI(-) of peak 3

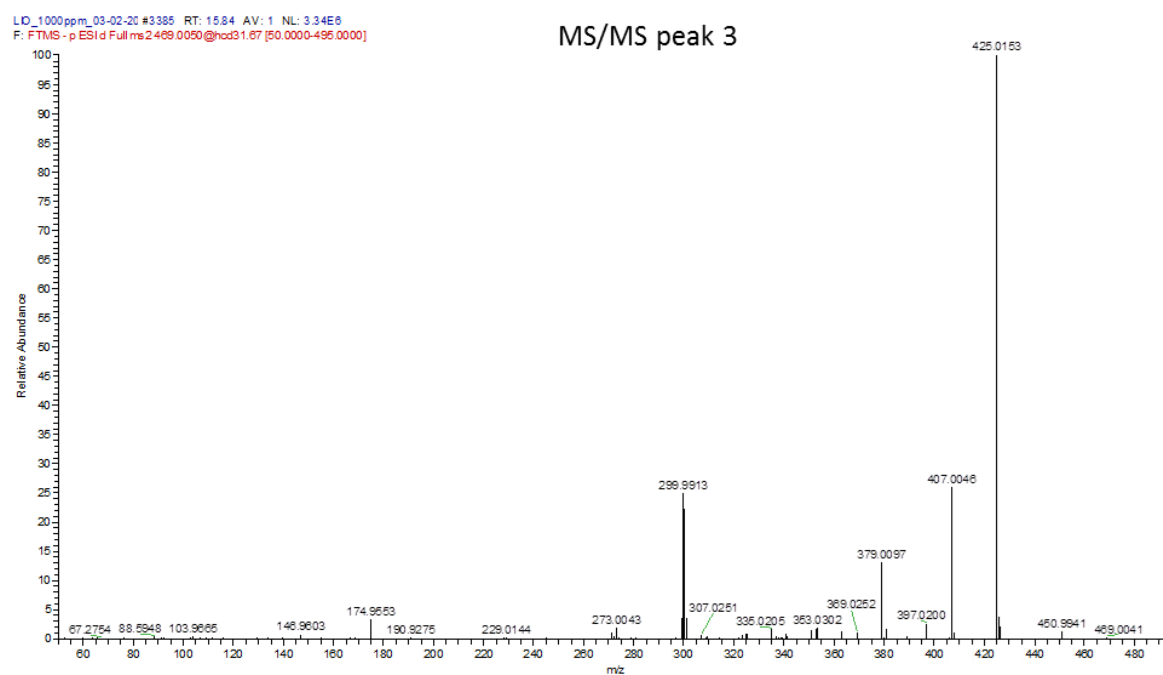
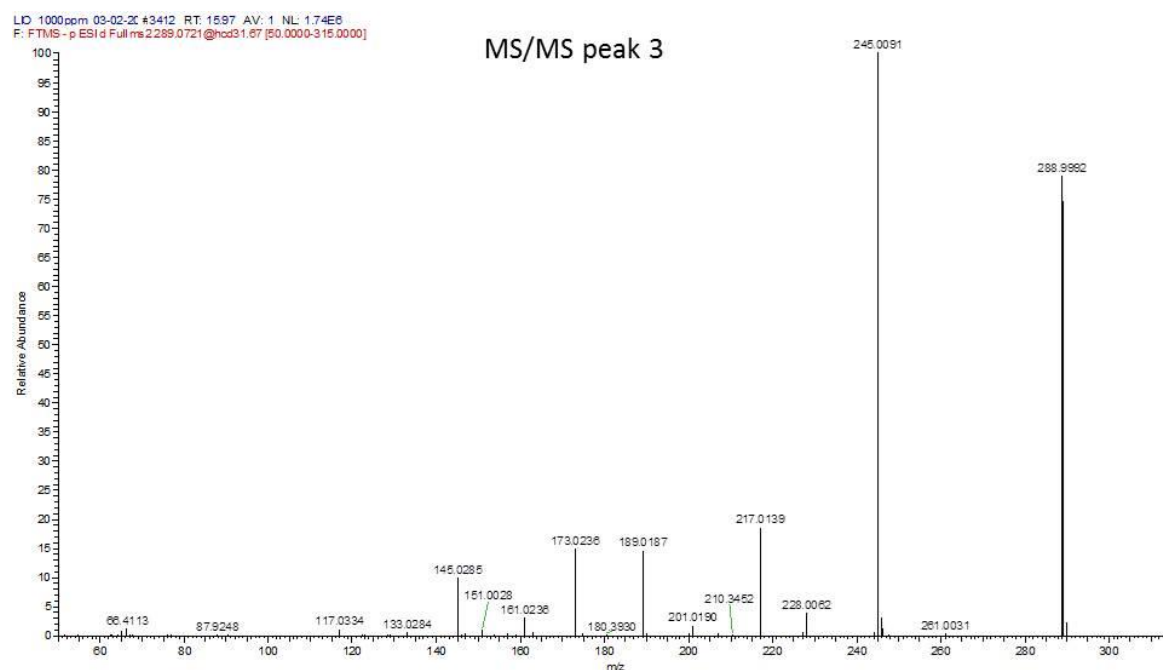


Figure S11. Full LC-HRMS ESI(-) of peak 4

## FULL-MS peak 4

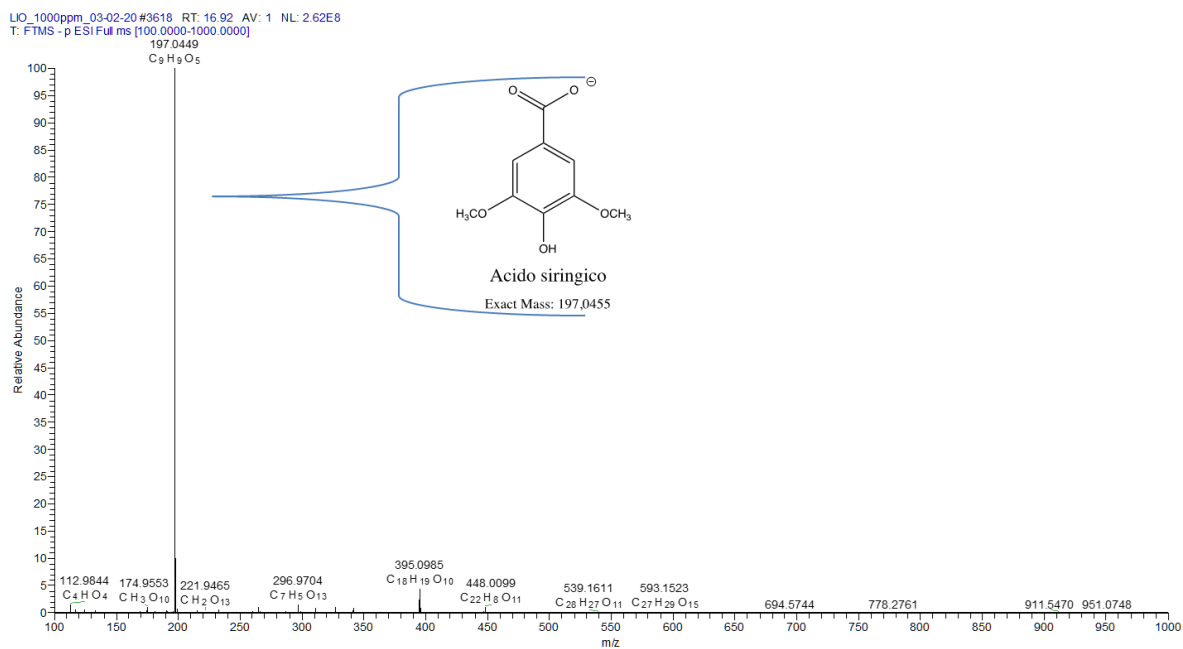


Figure S12. HRMS/MS ESI(-) of peak 4

## MS/MS peak 4

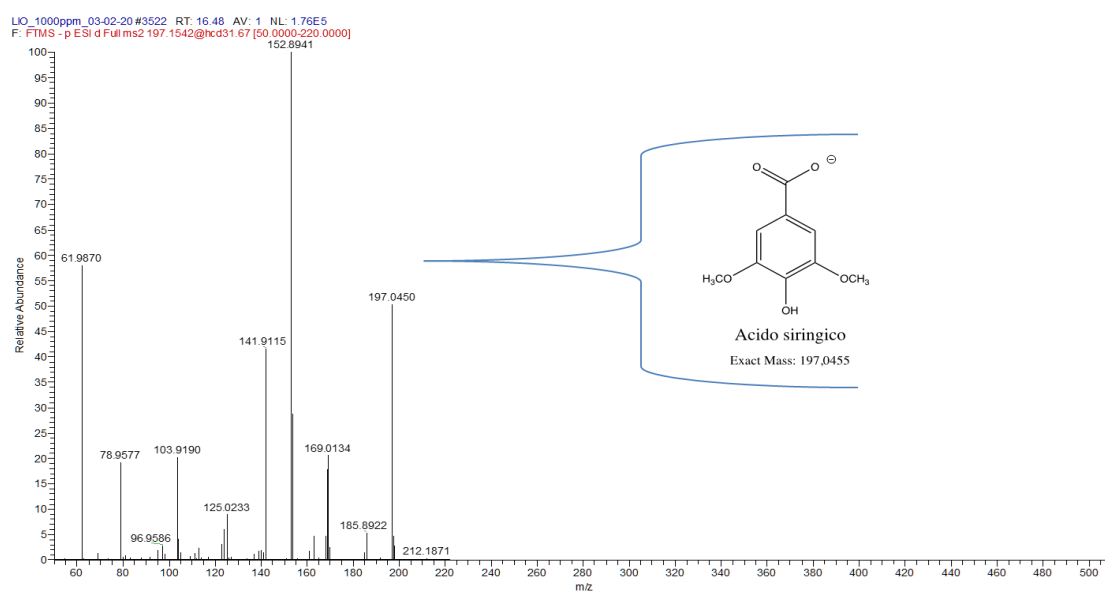


Figure S13. Full LC-HRMS ESI(-) of peak 5

FULL-MS peak 5

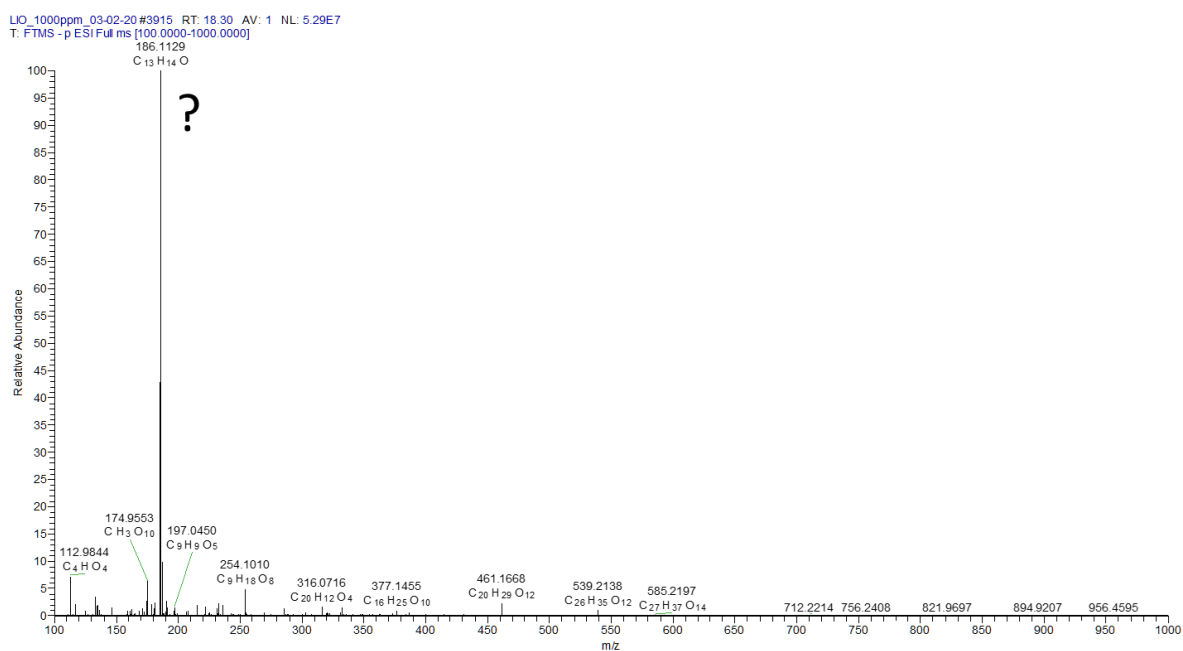
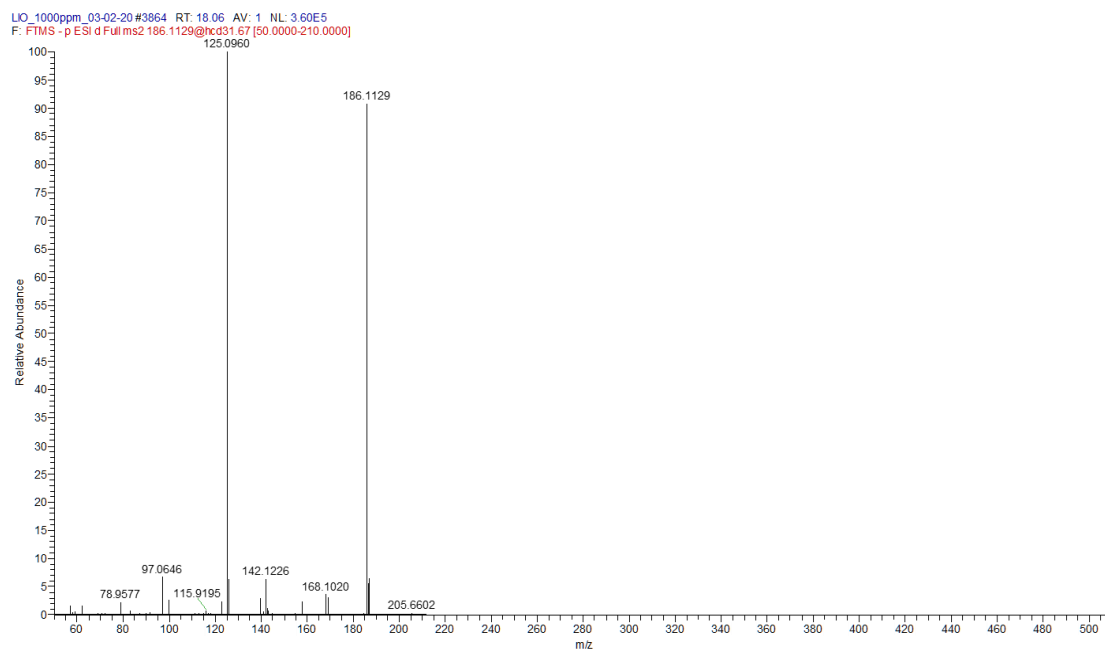


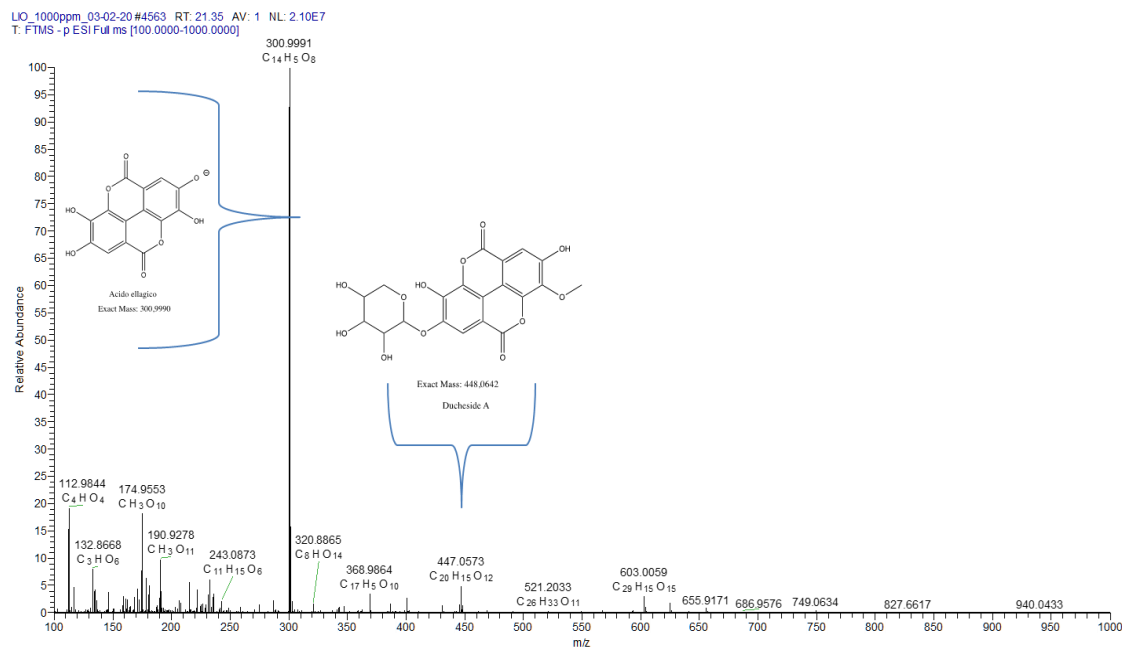
Figure S14. HRMS/MS ESI(-) of peak 5

MS/MS peak 5





**Figure S15.** Full LC-HRMS ESI(-) of peak 6  
FULL-MS peak 6



**Figure S16.** HRMS/MS ESI(-) of peak 6  
MS/MS peak 6

