

Supplementary materials

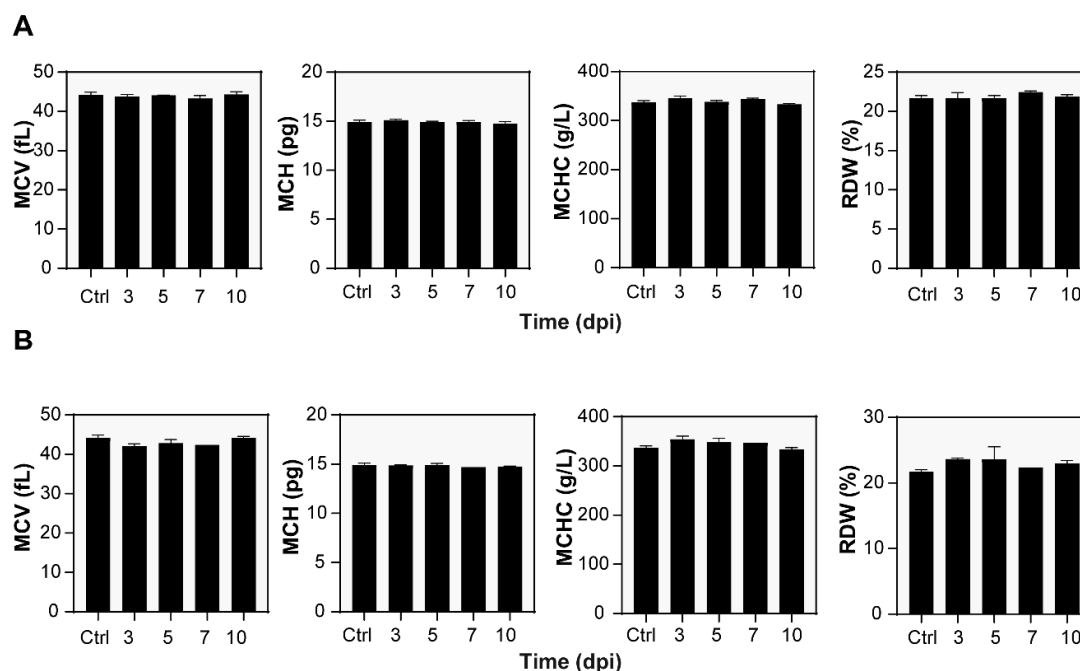


Figure S1. Hematological analysis parameters. Mice inoculated either with a low (A) or high (B) dose of *L. pneumophila* Sg 1, ST 62, and MAb Knoxville were anesthetized, and terminal blood collection was carried out via axilla incision. Data represent the mean \pm SD. MCV—mean corpuscular volume; MCH—mean cell hemoglobin; MCHC—mean corpuscular hemoglobin concentration; RDW—red blood cell distribution width.

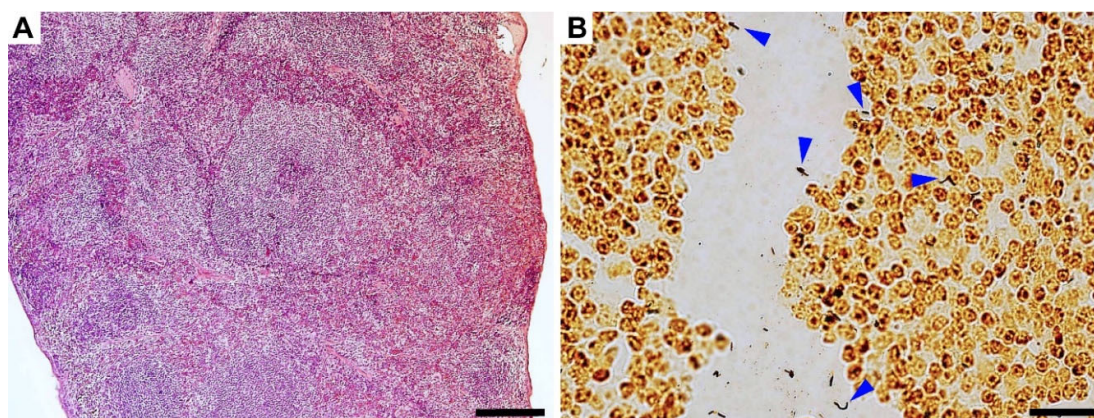


Figure S2. Disseminated *L. pneumophila* infection. Spleen histopathology (7 dpi, high-dose challenge) was assessed via (A) H&E staining and (A) Warthin–Starry staining. Rod-shaped structures, presumably *L. pneumophila*, were revealed (blue arrowheads). Scale bars: 200 and 20 μ m, respectively.