

Figure S1. Molecular identification (amplicons of PCR on agarose gel) of *S. aureus* by targeting *nuc* gene

M indicates a marker of 1kb, 1-5 are samples, P means positive control

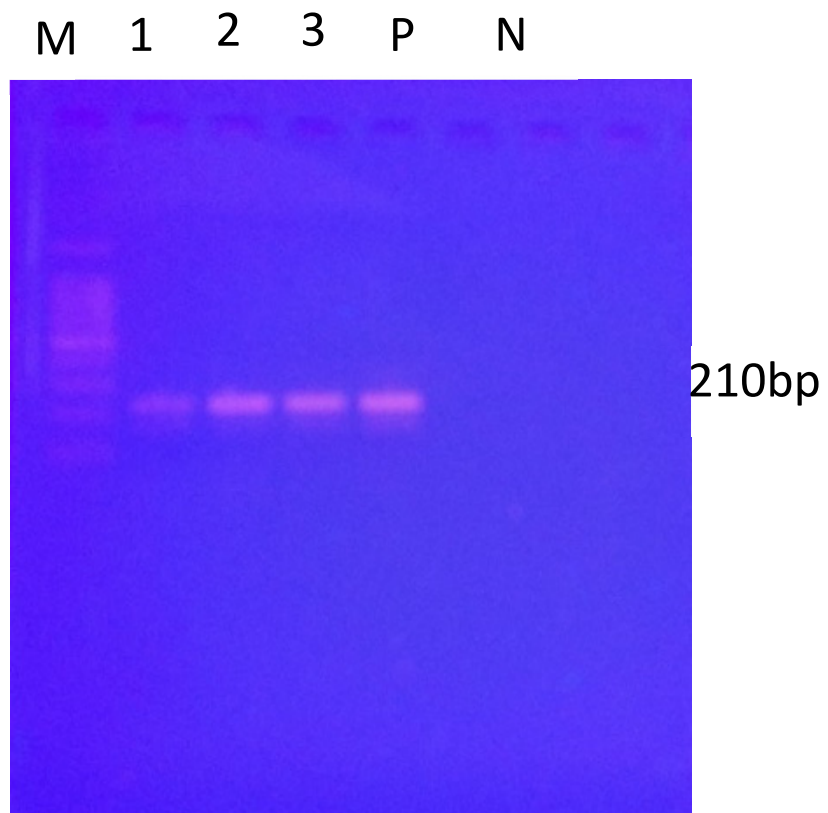


Figure S2 Molecular identification of *E. coli* targeting 23S RNA gene  
M indicates marker of 1000 bp, 1-3 are samples, P indicates positive control, N indicate negative control