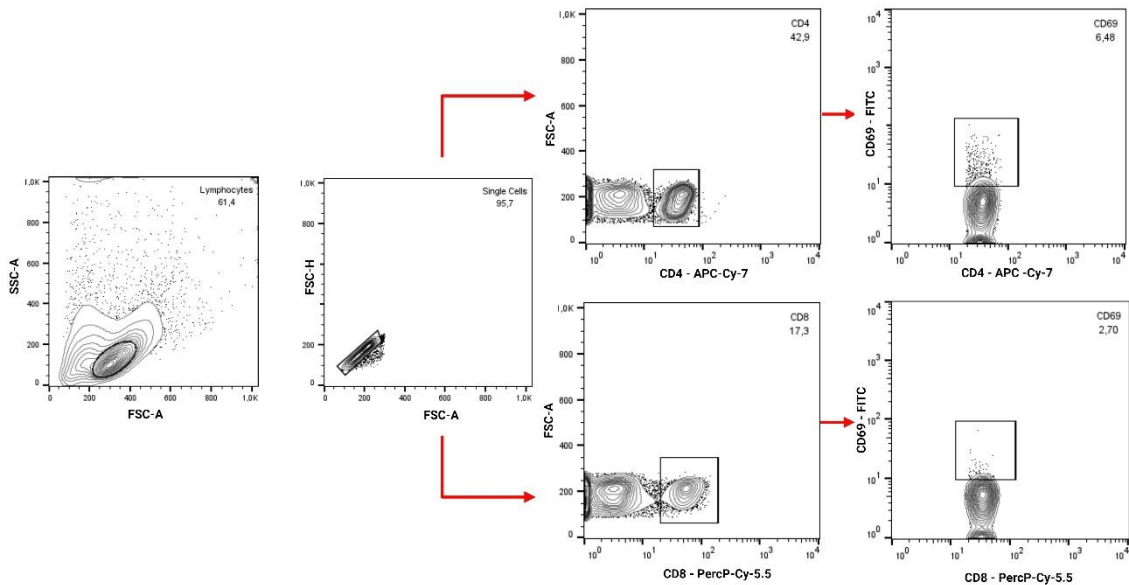


Supplementary Data



Supplementary Figure S1. Flow cytometry data analysis. The total lymphocyte gate was first selected through SSC and FSC-A profiles, followed by singlet separation using the FSC-A × FSC-H parameters. Next, the CD4⁺ or CD8⁺ T cells were set using FSC-A × CD8/CD4 parameters. Finally, the markers/CD4 (e.g., CD69/CD4) or CD8 (e.g., CD69/CD8) were set.

Supplementary Table S1. Gender, age, and ethnic-racial self-classification, comorbidities of donors.

	HC	NTB patients	VTB patients
Volunteers	9	3	8
Gender – F⁺/M⁺	5F/4M	3M	4F/4M
Age (S.E.M.#)	35.63(±3.05)	26 (±1)	34.69 (±3.01)
	Ethnic-racial self-classification		
Brown	44.4%	66.67%	50%
Black	x	x	25%
White	44.4%	33.33%	25%
Indigenous	11.1%	x	x
	Comorbidities		
Diabetes (%)	x	x	50%
Insuficiência cardíaca (%)	x	x	12.5%
Hypertension (%)	x	x	12.5%
Asthma (%)	x	x	25%
Others (%)	x	x	12.5%

F, Female; M, Male. HC = health control; NTB = non-vaccinated with active tuberculosis; VTB = vaccinated with active tuberculosis.

Supplementary Table S2. Means \pm standard error (SEM) of all parameters analyzed in CD4⁺ T cells.

CD137	HC	NTB	VTB
Medium	2.45 \pm 4.56	8.73 \pm 3.38	4.56 \pm 0.75
Pool Spike CoV-2	2.69 \pm 5.41	8.26 \pm 0.03	5.41 \pm 1.74
Pool CoV-2	2.64 \pm 6.85	8.52 \pm 2.41	6.85 \pm 1.89
SEB	4.42 \pm 7.87	10.37 \pm 2.55	7.87 \pm 1.47
CD69	HC	NTB	VTB
Medium	3.00 \pm 0.20	2.69 \pm 0.33	1.85 \pm 0.41
Pool Spike CoV-2	2.92 \pm 0.55	2.25 \pm 0.52	3.31 \pm 0.63
Pool CoV-2	2.51 \pm 0.29	7.06 \pm 0.18	3.63 \pm 0.83
SEB	24.83 \pm 6.75	14.20 \pm 2.71	8.80 \pm 1.67
TNF-α	HC	NTB	VTB
Medium	2.04 \pm 0.26	5.73 \pm 0.39	3.87 \pm 0.56
Pool Spike CoV-2	1.82 \pm 0.33	4.33 \pm 0.81	4.88 \pm 0.75
Pool CoV-2	2.05 \pm 0.36	4.98 \pm 0.003	3.15 \pm 0.44
SEB	1.93 \pm 0.35	8.75 \pm 0.95	4.46 \pm 0.56
IFN-γ	HC	NTB	VTB
Medium	1.36 \pm 0.31	2.41 \pm 0.06	3.81 \pm 0.62
Pool Spike CoV-2	1.15 \pm 0.14	3.71 \pm 0.16	5.09 \pm 1.32
Pool CoV-2	1.59 \pm 0.27	3.79 \pm 0.49	5.77 \pm 1.45
SEB	1.73 \pm 0.06	5.74 \pm 1.19	6.82 \pm 1.87
IL-17	HC	NTB	VTB
Medium	1.63 \pm 0.15	2.86 \pm 0.28	2.27 \pm 0.70
Pool Spike CoV-2	2.02 \pm 0.16	3.56 \pm 0.09	3.44 \pm 0.76
Pool CoV-2	2.02 \pm 0.20	4.90 \pm 0.51	3.17 \pm 0.84
SEB	2.12 \pm 0.17	8.19 \pm 1.04	3.71 \pm 0.45
IL-10	HC	NTB	VTB
Medium	0.96 \pm 0.07	4.07 \pm 1.04	3.81 \pm 0.78
Pool Spike CoV-2	1.47 \pm 0.12	3.12 \pm 0.17	5.87 \pm 0.83
Pool CoV-2	1.35 \pm 0.11	4.40 \pm 0.87	5.39 \pm 1.13
SEB	2.43 \pm 0.30	2.53 \pm 0.42	3.85 \pm 0.42

HC = health control (n = 9); NTB = non-vaccinated with active tuberculosis (n = 3); VTB = vaccinated with active tuberculosis (n = 8). PS = Pool Spike Cov-2; PT = Pool CoV-2; SEB = staphylococcal enterotoxin B.

Supplementary Table S3. Means \pm standard error (SEM) of all parameters analyzed in CD8⁺ T cells.

CD137	HC	NTB	VTB
Medium	2.41 \pm 0.35	2.52 \pm 0.93	4.35 \pm 0.93
Pool Spike CoV-2	3.22 \pm 0.31	6.42 \pm 2.93	5.38 \pm 1.46
Pool CoV-2	2.63 \pm 0.28	4.02 \pm 1.44	5.69 \pm 1.44
SEB	4.06 \pm 1.55	3.78 \pm 0.009	5.32 \pm 1.23
CD69	HC	NTB	VTB
Medium	6.22 \pm 1.38	9.90 \pm 0.97	5.44 \pm 0.92
Pool Spike CoV-2	4.95 \pm 0.74	18.53 \pm 4.24	8.17 \pm 1.35
Pool CoV-2	5.99 \pm 0.96	14.13 \pm 3.79	4.79 \pm 0.67
SEB	16.83 \pm 3.83	11.16 \pm 1.17	10.86 \pm 1.97
TNF-α	HC	NTB	VTB
Medium	2.83 \pm 0.46	7.66 \pm 0.72	5.24 \pm 0.97
Pool Spike CoV-2	3.25 \pm 0.44	11.94 \pm 5.11	5.08 \pm 0.64
Pool CoV-2	2.79 \pm 0.52	15.03 \pm 0.03	7.47 \pm 1.70
SEB	3.56 \pm 0.31	7.72 \pm 0.41	7.79 \pm 1.16
IFN-γ	HC	NTB	VTB
Medium	1.93 \pm 0.17	3.78 \pm 0.40	3.69 \pm 0.26
Pool Spike CoV-2	2.04 \pm 0.25	3.04 \pm 0.34	6.59 \pm 1.33
Pool CoV-2	4.61 \pm 1.08	3.00 \pm 0.31	6.20 \pm 1.46
SEB	4.06 \pm 0.37	5.67 \pm 1.08	6.46 \pm 1.36
IL-17	HC	NTB	VTB
Medium	1.98 \pm 0.30	9.12 \pm 2.98	5.16 \pm 0.83
Pool Spike CoV-2	1.87 \pm 0.13	3.25 \pm 0.35	6.48 \pm 1.55
Pool CoV-2	1.41 \pm 0.17	9.25 \pm 1.41	7.28 \pm 1.41
SEB	2.28 \pm 0.22	13.7 \pm 4.84	10.0 \pm 1.86
IL-10	HC	NTB	VTB
Medium	2.06 \pm 0.18	2.87 \pm 0.10	3.47 \pm 0.86
Pool Spike CoV-2	1.62 \pm 0.12	2.54 \pm 0.40	2.16 \pm 0.35
Pool CoV-2	3.03 \pm 0.60	1.85 \pm 0.14	3.79 \pm 0.47
SEB	1.53 \pm 0.20	5.04 \pm 1.21	4.88 \pm 1.10

HC = health control (n = 9); NTB = non-vaccinated with active tuberculosis (n = 3); VTB = vaccinated with active tuberculosis (n = 8). PS = Pool Spike Cov-2; PT = Pool CoV-2; SEB = staphylococcal enterotoxin B.