

Fig 1.

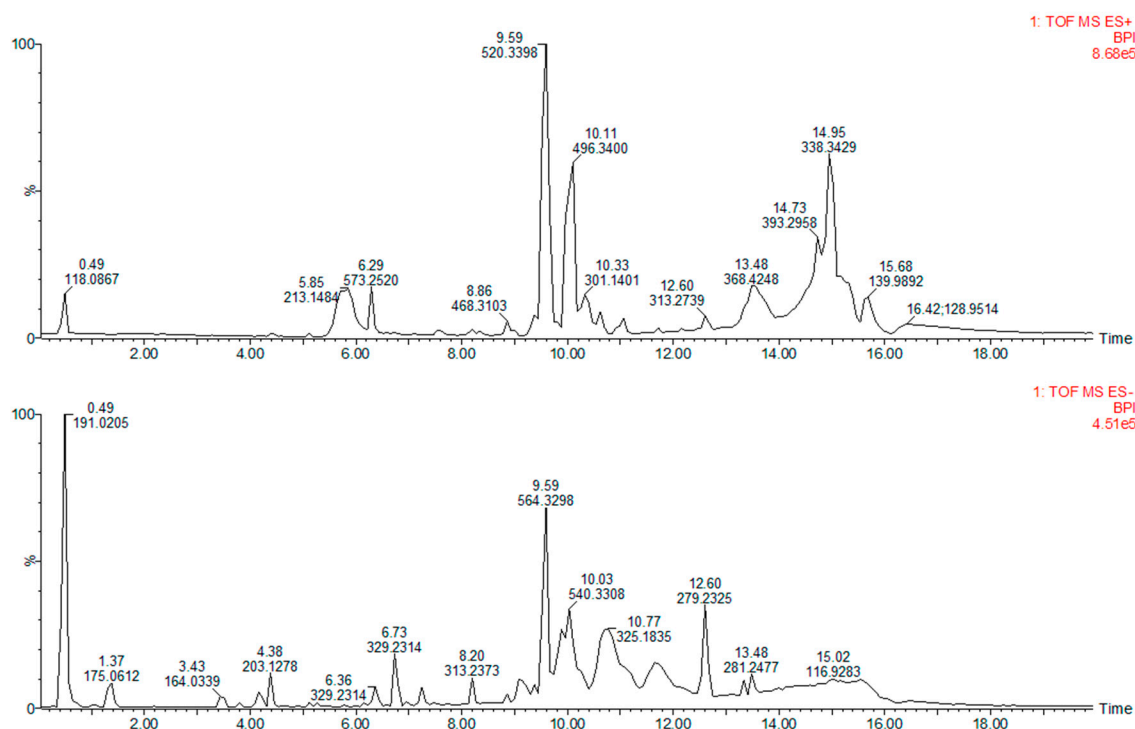


Figure S1. Ultra-Performance Liquid Chromatography-Mass Spectrometry (UPLC-MS) of crude extract from the fungus *Buergenerula spartinae* after solid-state fermentation.

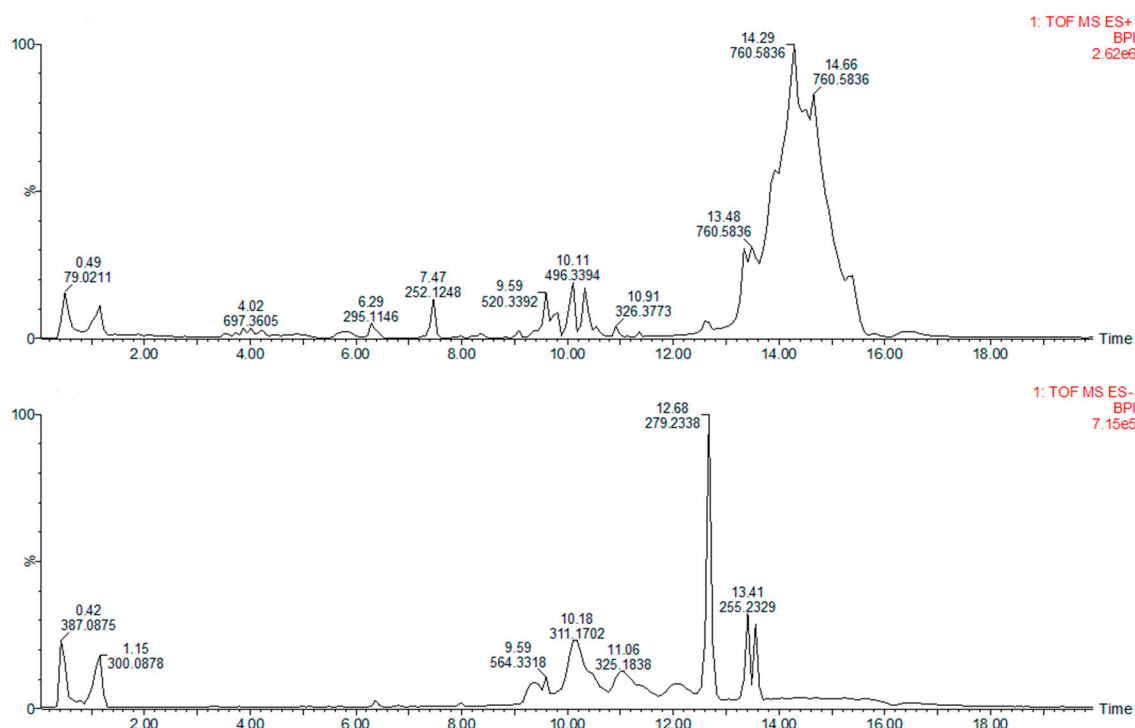


Figure S2. Ultra-Performance Liquid Chromatography-Mass Spectrometry (UPLC-MS) of crude extract from the fungus *Neofusicoccum parvum* after solid-state fermentation.