



Supplementary materials

Application of Fourier Transform Infrared Spectroscopy to Discriminate Two Closely Related Bacterial Species: *Bacillus anthracis* and *Bacillus cereus* Sensu Stricto

Viviana Manzulli ^{1,*}, Miriam Cordovana², Luigina Serrecchia ¹, Valeria Rondinone ¹, Lorenzo Pace ¹, Donatella Farina ¹, Dora Cipolletta¹, Marta Caruso¹, Rosa Fraccalvieri¹, Laura Maria Difato¹, Francesco Tolve¹, Valerio Vetrutto¹ and Domenico Galante ¹

¹ Istituto Zooprofilattico Sperimentale della Puglia e della Basilicata, 71121, Foggia, Italy; luigina.serrecchia@izspb.it (L.S.); valeria.rondinone@izspb.it (V.R.); lorenzo.pace@izspb.it (L.P.); donatella.farina@izspb.it (D.F.); dora.cipolletta@izspb.it (D.C.); marta.caruso@izspb.it (M.C.); rosa.fraccalvieri@izspb.it (R.F.); maria.difato@izspb.it (L.M.D.); francesco.tolve@izspb.it (F.T.); valerio.vetrutto@izspb.it (V.V.); domenico.galante@izspb.it (D.G.)

² Bruker Daltonics GmbH, 28359, Bremen, Germany; miriamcordovana@gmail.com

* Correspondence: viviana.manzulli@izspb.it; Tel.: +39-0881-786330

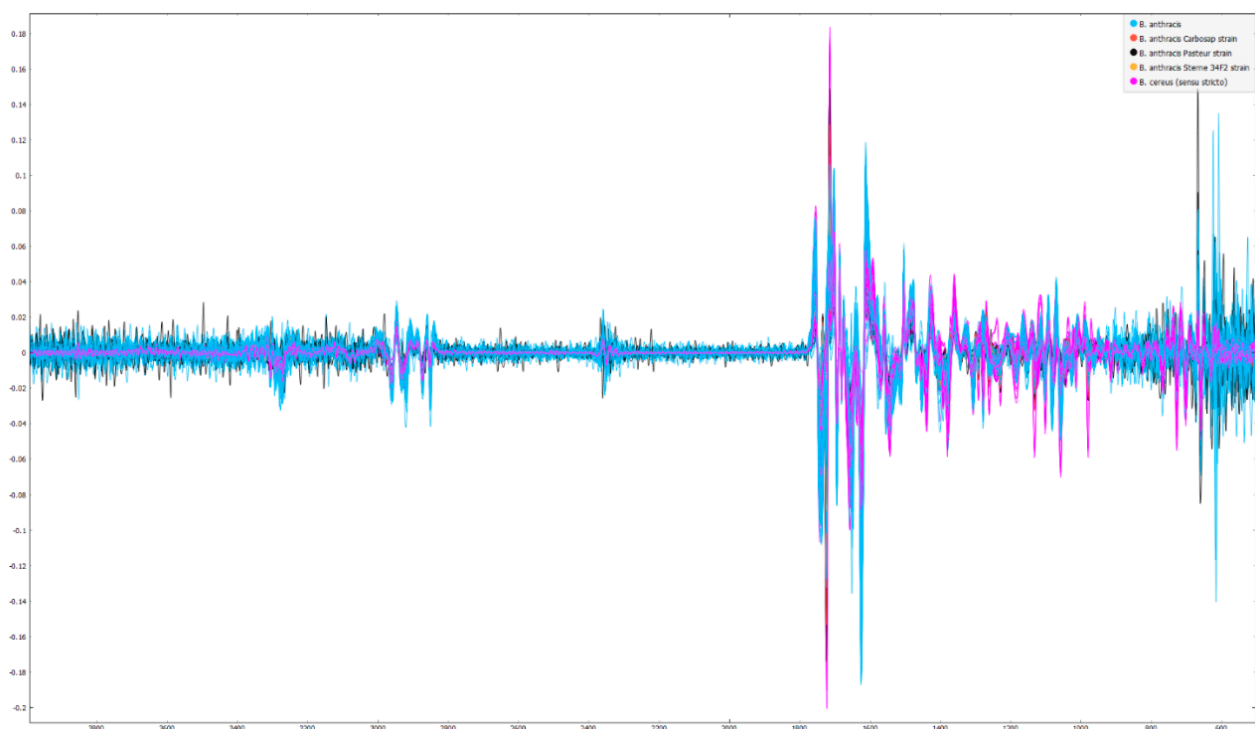


Figure S1. Second derivatives of infrared spectra of all isolates in the wavenumber range from 4000 to 500 cm^{-1} . Each of the five strains included in this study (*B. anthracis* field strains, three *B. anthracis* vaccine strains, and *B. cereus* s.s.) is shown by a different colour, as indicated in the legend in the upper-right corner (*B. anthracis* field strains in light blue, Carbosap strain in red, Pasteur strain in black, Sterne 34F2 strain in orange, and *B. cereus* s.s. in magenta). Differences between the derivatives of the spectra of *B. anthracis* and *B. cereus* s.s. are visible in the region corresponding to carbohydrates and the fingerprint (indicated by the dashed lines).

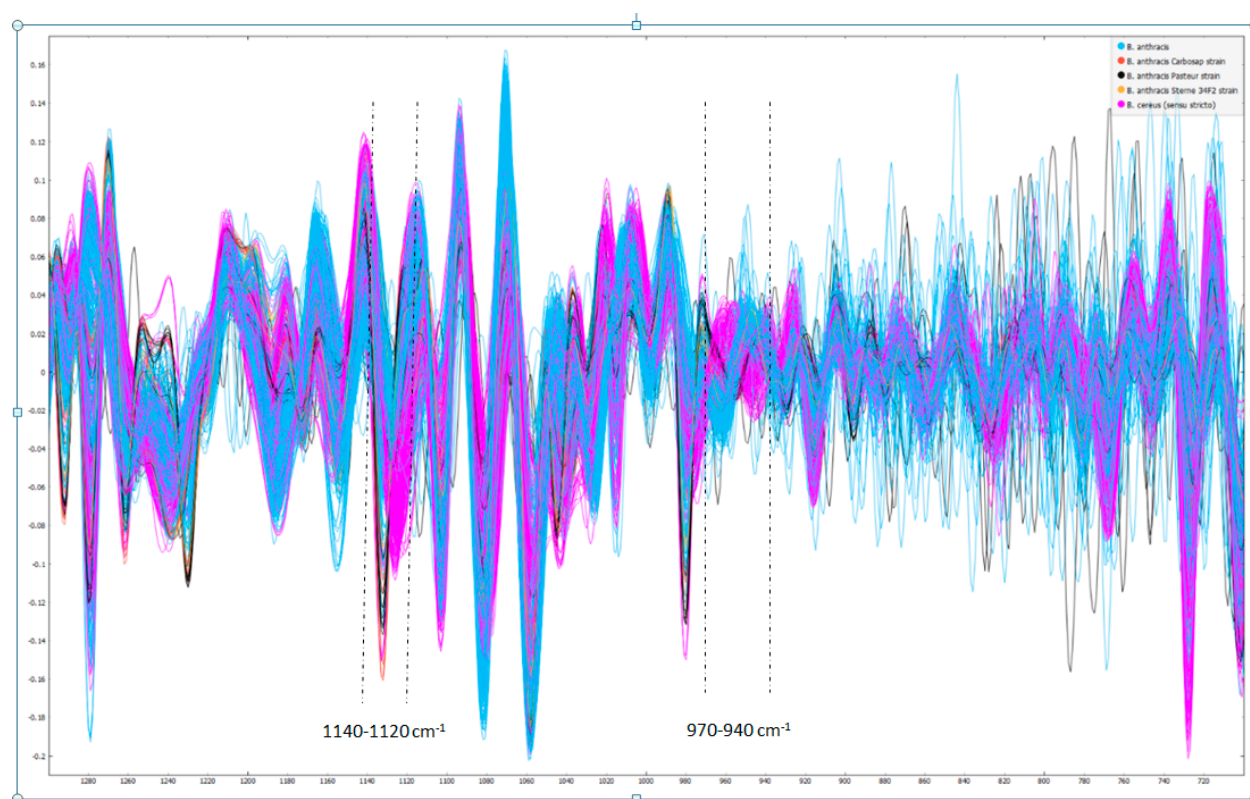


Figure S2. Second derivatives of infrared spectra in the wavenumber range 1300-700 cm^{-1} . Each of the five strains included in this study (*B. anthracis* field strains, the three *B. anthracis* vaccine strains, and *B. cereus* s.s.) is shown by a different colour, as indicated in the legend at the upper-right corner (*B. anthracis* field strains in light blue, Carbosap strain in red, Pasteur strain in black, Sterne 34F2 strain in orange, and *B. cereus* s.s. in magenta). Significant differences in the derivatives of the spectra of *B. anthracis* and *B. cereus* s.s. can be observed in different parts of the region, especially, e.g., in the wavenumber ranges of 970-940 cm^{-1} and 1140-1120 cm^{-1} .