
Supplementary Material

Skin Microbial Community Associated to Strawberry Disease in Farmed Rainbow Trout (*Oncorhynchus mykiss* Walbaum, 1792)

Alda Pardo ^{1,2}, Alejandro Villasante ^{1,3} and Jaime Romero ^{1,*}

Figure S1.- Macroscopic skin lesion caused by SD (Strawberry Disease).

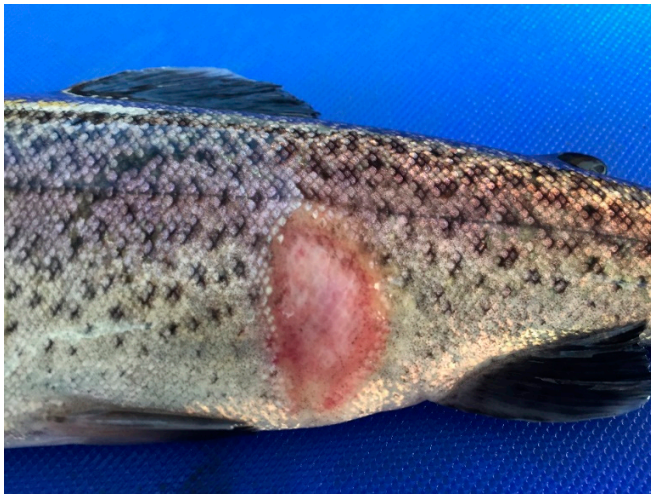


Figure S2.- Rarefaction curves of skin samples from trout with lesions (injury) and without lesions (non-injury).

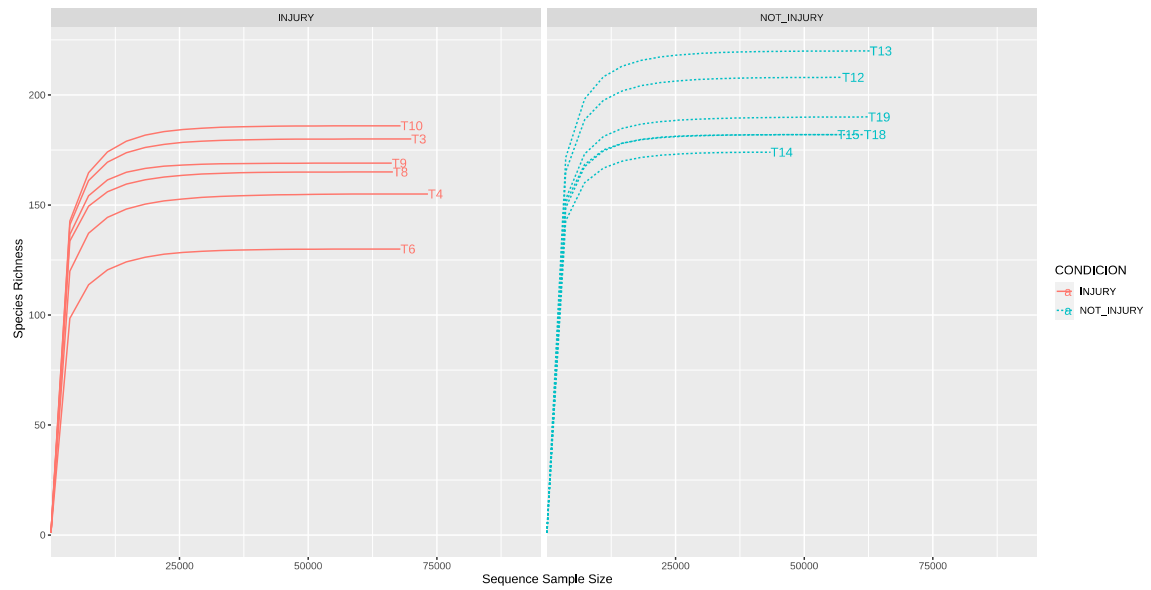


Table S1.- Highly similar sequences to the Candidatus Midichloria NGS sequence (ASV; 265 bp) were identified using megablast (blastn) in GenBank.

| items | Accession Number | % identity | alignment length | mismatches | gap opens | Citation | PUBMED or DOI | Source/Organism |
|-------|------------------|------------|------------------|------------|-----------|-------------------|----------------------------|------------------------------|
| 1 | MN128406.2 | 100.000 | 265 | 0 | 0 | Unpublished | | environmental sample |
| 2 | EU555284.1 | 100.000 | 265 | 0 | 0 | Lloyd 2008 | 19149374 | skin rainbow trout |
| 3 | KT851867.1 | 99.245 | 265 | 2 | 0 | Zaila 2017 | 28232825 | Ichthyophthirius multifiliis |
| 4 | KT851863.1 | 99.245 | 265 | 2 | 0 | Zaila 2017 | 28232825 | Ichthyophthirius multifiliis |
| 5 | KT851862.1 | 99.245 | 265 | 2 | 0 | Zaila 2017 | 28232825 | Ichthyophthirius multifiliis |
| 6 | KT851804.1 | 99.245 | 265 | 2 | 0 | Zaila 2017 | 28232825 | Ichthyophthirius multifiliis |
| 7 | KT851759.1 | 99.245 | 265 | 2 | 0 | Zaila 2017 | 28232825 | Ichthyophthirius multifiliis |
| 8 | KT851803.1 | 98.872 | 266 | 2 | 1 | Zaila 2017 | 28232825 | Ichthyophthirius multifiliis |
| 9 | EU315771.1 | 95.849 | 265 | 11 | 0 | Hornok 2008 | 18495345 | flies and ticks |
| 10 | LC381237.1 | 95.472 | 265 | 12 | 0 | Adenyo 2020 | 10.1016/j.actatropica.2020 | ticks |
| 11 | MK416233.1 | 95.472 | 265 | 12 | 0 | Selmi 2019 | 31398530 | ticks |
| 12 | KY910125.1 | 95.472 | 265 | 12 | 0 | Unpublished | | ticks |
| 13 | MN783559.1 | 95.472 | 265 | 12 | 0 | Unpublished | | ticks |
| 14 | MN783558.1 | 95.472 | 265 | 12 | 0 | Unpublished | | ticks |
| 15 | LT575865.1 | 95.472 | 265 | 12 | 0 | Unpublished | | ticks |
| 16 | LT575864.1 | 95.472 | 265 | 12 | 0 | Unpublished | | ticks |
| 17 | LT575863.1 | 95.472 | 265 | 12 | 0 | Unpublished | | ticks |
| 18 | LT575860.1 | 95.472 | 265 | 12 | 0 | Unpublished | | ticks |
| 19 | OR295409.1 | 95.472 | 265 | 12 | 0 | Unpublished | | ticks |
| 20 | CP094379.1 | 95.472 | 265 | 12 | 0 | Unpublished | | ticks |
| 21 | OM982502.1 | 95.472 | 265 | 12 | 0 | Sgroi 2022 | 35997363 | ticks |
| 22 | OM982499.1 | 95.472 | 265 | 12 | 0 | Sgroi 2022 | 35997363 | ticks |
| 23 | HF568843.2 | 95.472 | 265 | 12 | 0 | Unpublished | | ticks |
| 24 | MZ476215.1 | 95.472 | 265 | 12 | 0 | Unpublished | | ticks |
| 25 | MZ476204.1 | 95.472 | 265 | 12 | 0 | Unpublished | | ticks |
| 26 | MZ476173.1 | 95.472 | 265 | 12 | 0 | Unpublished | | ticks |
| 27 | MZ476048.1 | 95.472 | 265 | 12 | 0 | Unpublished | | ticks |
| 28 | MZ475999.1 | 95.472 | 265 | 12 | 0 | Unpublished | | ticks |
| 29 | LR742713.1 | 95.472 | 265 | 12 | 0 | Unpublished | | ticks |
| 30 | LR742712.1 | 95.472 | 265 | 12 | 0 | Unpublished | | ticks |
| 31 | LR742711.1 | 95.472 | 265 | 12 | 0 | Unpublished | | ticks |
| 32 | LR742710.1 | 95.472 | 265 | 12 | 0 | Unpublished | | ticks |
| 33 | MW092747.1 | 95.472 | 265 | 12 | 0 | Unpublished | | ticks |
| 34 | MT965821.1 | 95.472 | 265 | 12 | 0 | Unpublished | | ticks |
| 35 | MT965820.1 | 95.472 | 265 | 12 | 0 | Unpublished | | ticks |
| 36 | FM992373.1 | 95.472 | 265 | 12 | 0 | Beninati 2009 | 19732154 | ticks |
| 37 | FM992372.1 | 95.472 | 265 | 12 | 0 | Beninati 2009 | 19732154 | ticks |
| 38 | AM411593.1 | 95.472 | 265 | 12 | 0 | Epis 2008 | 18205982 | ticks |
| 39 | EF687768.1 | 95.472 | 265 | 12 | 0 | Venzal 2008 | 18071910 | ticks |
| 40 | AF497583.1 | 95.472 | 265 | 12 | 0 | Parola 2003 | 12682151 | ticks |
| 41 | DQ379964.1 | 95.472 | 265 | 12 | 0 | Loftis 2006 | 17004028 | ticks |
| 42 | LC683106.1 | 95.094 | 265 | 13 | 0 | Qiu 2022 | 35631087 | ticks |
| 43 | LT898326.1 | 95.094 | 265 | 13 | 0 | Unpublished | | ticks |
| 44 | KX359181.1 | 95.094 | 265 | 13 | 0 | Santos-Silva 2016 | 27894847 | ticks |
| 45 | MN783572.1 | 95.094 | 265 | 13 | 0 | Unpublished | | ticks |
| 46 | MN783569.1 | 95.094 | 265 | 13 | 0 | Unpublished | | ticks |
| 47 | MN783566.1 | 95.094 | 265 | 13 | 0 | Unpublished | | ticks |
| 48 | MN783565.1 | 95.094 | 265 | 13 | 0 | Unpublished | | ticks |
| 49 | MN783564.1 | 95.094 | 265 | 13 | 0 | Unpublished | | ticks |
| 50 | MN783563.1 | 95.094 | 265 | 13 | 0 | Unpublished | | ticks |