

Polyphasic Characterization of *Brucella* spp. in Livestock Slaughtered from Abattoirs in Eastern Cape, South Africa

Koketso Desiree Mazwi ^{1,*}, Francis Babaman Kolo ¹, Ishmael Festus Jaja ^{2,3}, Charles Byaruhanga ^{1,4}, Ayesha Hassim ¹ and Henriette van Heerden ^{1,*}

- ¹ Department of Veterinary Tropical Diseases, Faculty of Veterinary Science, University of Pretoria, Onderstepoort 0002, South Africa; kolofrancis@hotmail.com (F.B.K.); cbyaruhanga27@yahoo.com (C.B.); ayesha.hassim@gmail.com (A.H.)
- ² Department of Livestock and Pasture Science, Faculty of Science and Agriculture, University of Fort Hare, Alice 5700, South Africa; ijaja@ufh.ac.za
- ³ Department of Agriculture and Animal Health, University of South Africa, Roodepoort, Johannesburg 1709, South Africa
- ⁴ National Agricultural Research Organisation, Entebbe P.O. Box 259, Uganda
- * Correspondence: desireemazwi@gmail.com (K.D.M.); henriette.vanheerden@up.ac.za (H.v.H.)

Table S1: Molecular and serological identification of *Brucella* spp. in livestock.

Batch number (per collection)	Abattoirs	Positive direct Tissue screening (ITS PCR)	Culture isolates (AMOS PCR)
Batch 1	Abattoir A pigs	0/20	-
	Abattoir B cattle	26/30	5 - <i>B. abortus</i>
	Abattoir B sheep	4/20	3 – Mixed infections (<i>B. abortus</i> and <i>B. melitensis</i>)
	Abattoir C cattle	7/30	7 – <i>B. abortus</i>
	Abattoir D sheep	9/20	1 – <i>B. abortus</i>
	Abattoir E cattle	13/40	3 – <i>B. abortus</i>
			1 – Mixed infections (<i>B. abortus</i> and <i>B. melitensis</i>)
Batch 2	Abattoir A cattle	19/30	6 – <i>B. abortus</i>
	Abattoir B cattle	1/20	1 – Mixed infections (<i>B. abortus</i> and <i>B. melitensis</i>)
	Abattoir C pig	0/15	-
	Abattoir D cattle	0/3	-
	Abattoir E sheep	15/20	10 – <i>B. abortus</i>
			1 – Mixed infections (<i>B. abortus</i> and <i>B. melitensis</i>)
	Abattoir E cattle	11/27	10 – <i>B. abortus</i>
Batch 3			1 – Mixed infections (<i>B. abortus</i> and <i>B. melitensis</i>)
	Abattoir B cattle	17/100	7- <i>B. abortus</i>
	Abattoir B sheep	1/140	0
	Abattoir B pig	0/34	-
	Abattoir E pig	4/16	1 – <i>B. abortus</i>
			1 – Mixed infections (<i>B. abortus</i> and <i>B. melitensis</i>)

*The numbers in this table represent carcasses

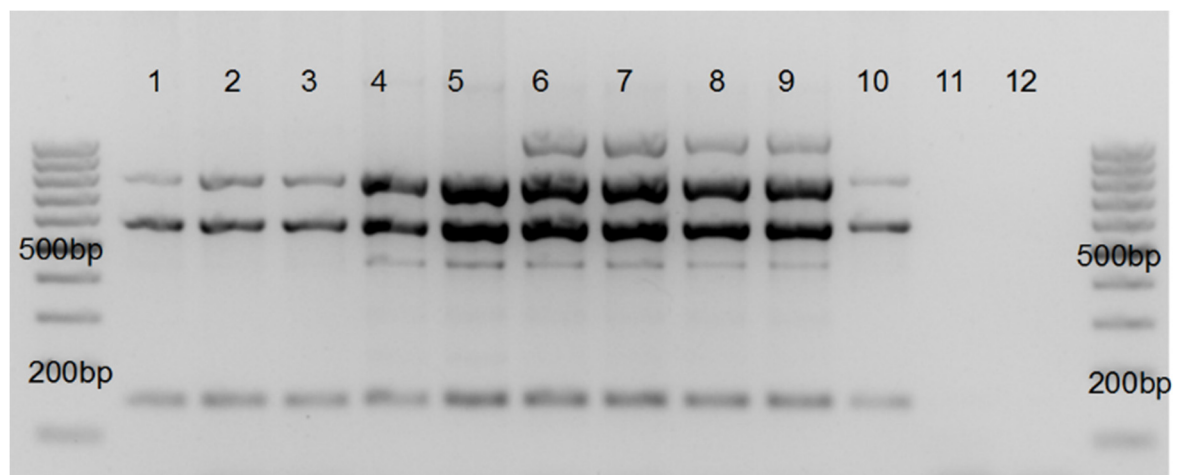


Figure S1: Gel electrophoresis of Bruce-Ladder PCR amplification to differentiate the field strains. Lanes 1-5 and 10 show amplification of *B. abortus*, lanes 6-8 show amplification OF *B. melitensis*, lane 9 show Rev 1 positive and lane 11 and 12 show negative controls.