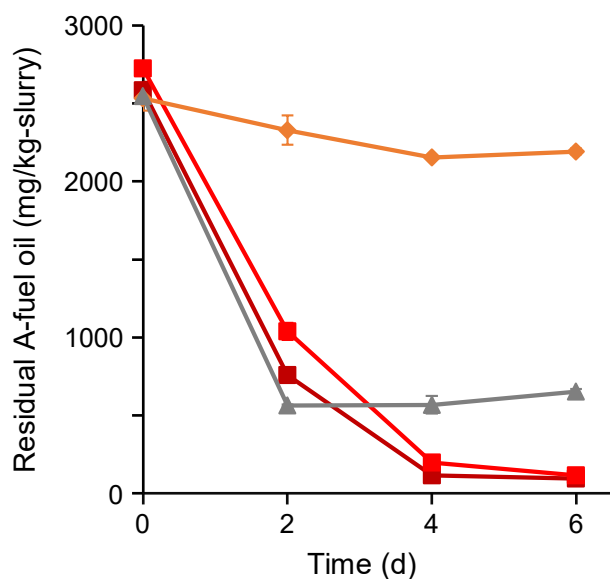
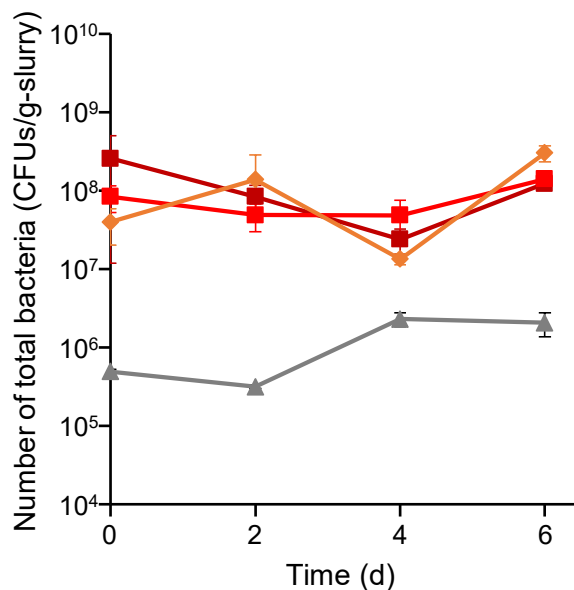


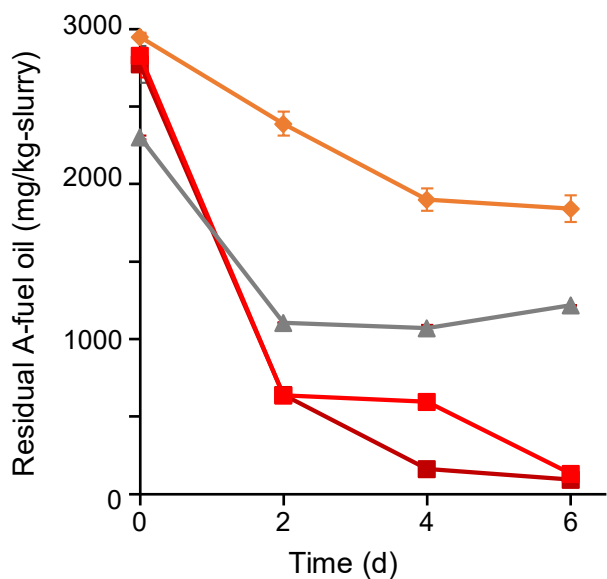
A: #3, 4



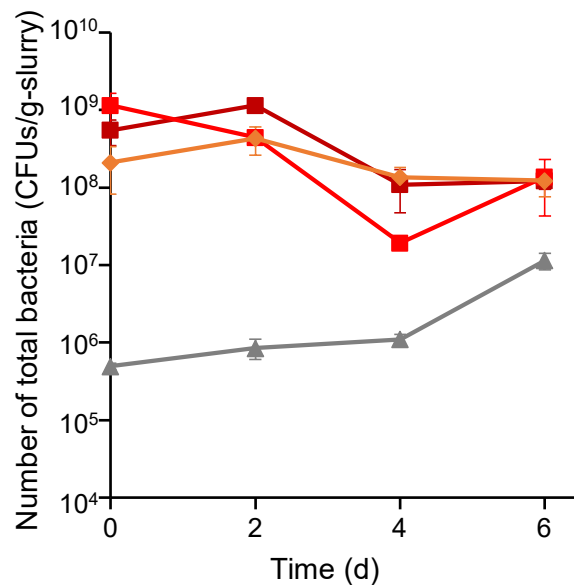
B: #3, 4



C: #5, 6



D: #5, 6



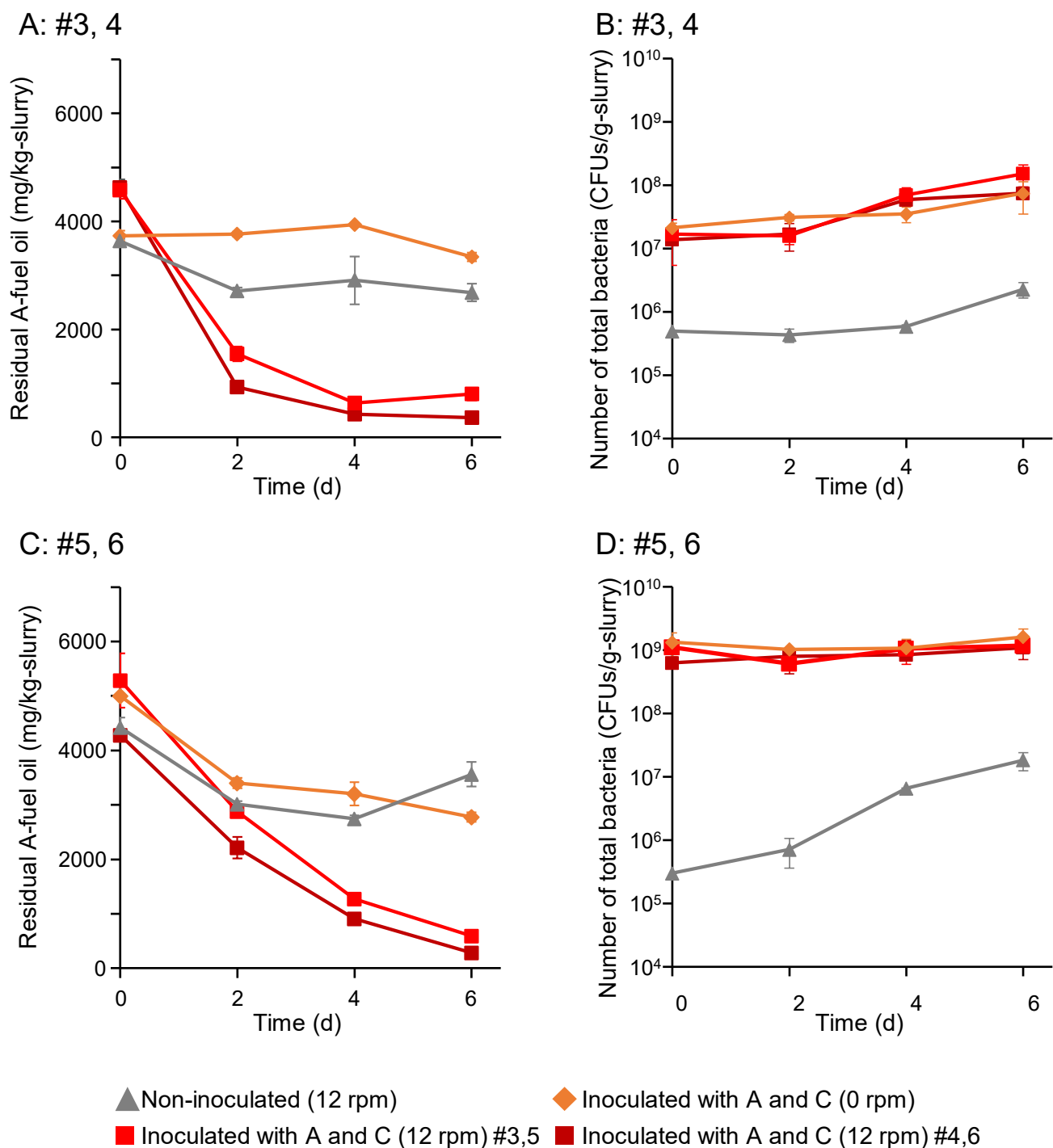
▲ Non-inoculated (12 rpm)

◆ Inoculated with A and C (0 rpm)

■ Inoculated with A and C (12 rpm) #3,5

■ Inoculated with A and C (12 rpm) #4,6

**Figure S1.** Biodegradation of 2500 mg/kg-slurry of A-fuel oil in rotational slurry bioreactors (results of another lots, #3,4,5,6). Panels A and C showed changes in the residual A-fuel oil in 6 days. Panels B and D showed changes in the numbers of total bacteria and A-fuel oil degraders (CFU/g-slurry) in 6 days. Two independent assays were performed for the samples inoculated with degraders (strains A and C) at 12 rpm rotation. Standard deviations of triplicate data are shown.



**Figure S2.** Biodegradation of 5000 mg/kg-slurry of A-fuel oil in rotational slurry bioreactors (results of another lots, #3,4,5,6). Panels A and C showed changes in the residual A-fuel oil in 6 days. Panels B and D showed changes in the numbers of total bacteria and A-fuel oil degraders (CFU/g-slurry) in 6 days. Two independent assays were performed for the samples inoculated with degraders (strains A and C) at 12 rpm rotation. Standard deviations of triplicate data are shown.