

S1. Gel images of singleplex PCRs run for the confirmation of virulence genes detected in different pathotypes in this study.

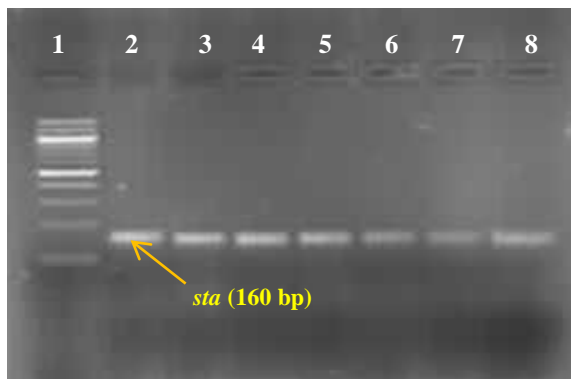


Figure S1: Gel image of singleplex PCR products:
Lane 1: 100bp molecular marker (ladder); Lane 2-8: *E. coli* isolates showing *sta* (160 bp) gene

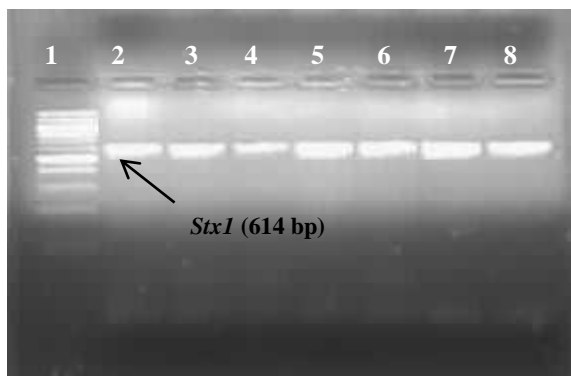


Figure S2: Gel image of singleplex PCR products:
Lane 1: 100bp molecular marker (ladder); Lane 2-8: *E. coli* isolates showing *Stx1* (614 bp) gene

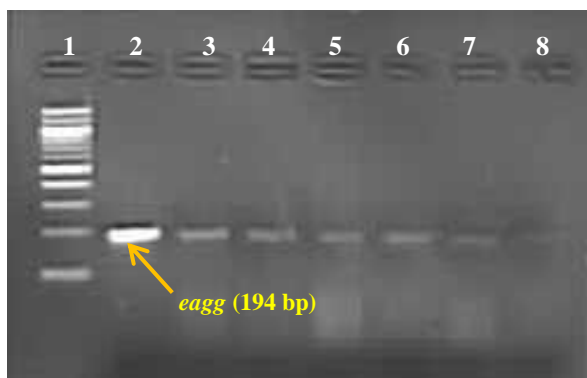


Figure S3: Gel image of singleplex PCR products:
Lane 1: 100bp molecular marker (ladder); Lane 2-8: *E. coli* isolates showing *eagg* (194 bp) gene (EAEC).

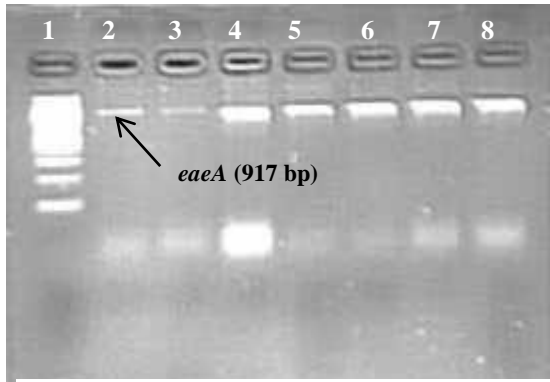


Figure S4: Gel image of singleplex PCR products:
Lane 1: 100bp molecular marker (ladder); Lane 2-8:
E. coli isolates showing *eaeA* (917 bp) gene
(aEPEC).