

Figure 1. An illustration of the *ASCL4* gene phylogeny tree and alignment data used for dN/dS analysis. **A.** The maximum likelihood phylogenetic tree from *ASCL4* amino acid sequences of 12 species used for dN/dS analysis. **B.** The multiple sequence alignment of the 12 species used of dN/dS analysis showing amino acid site (L30S) under positive selection in *ASCL4* gene.

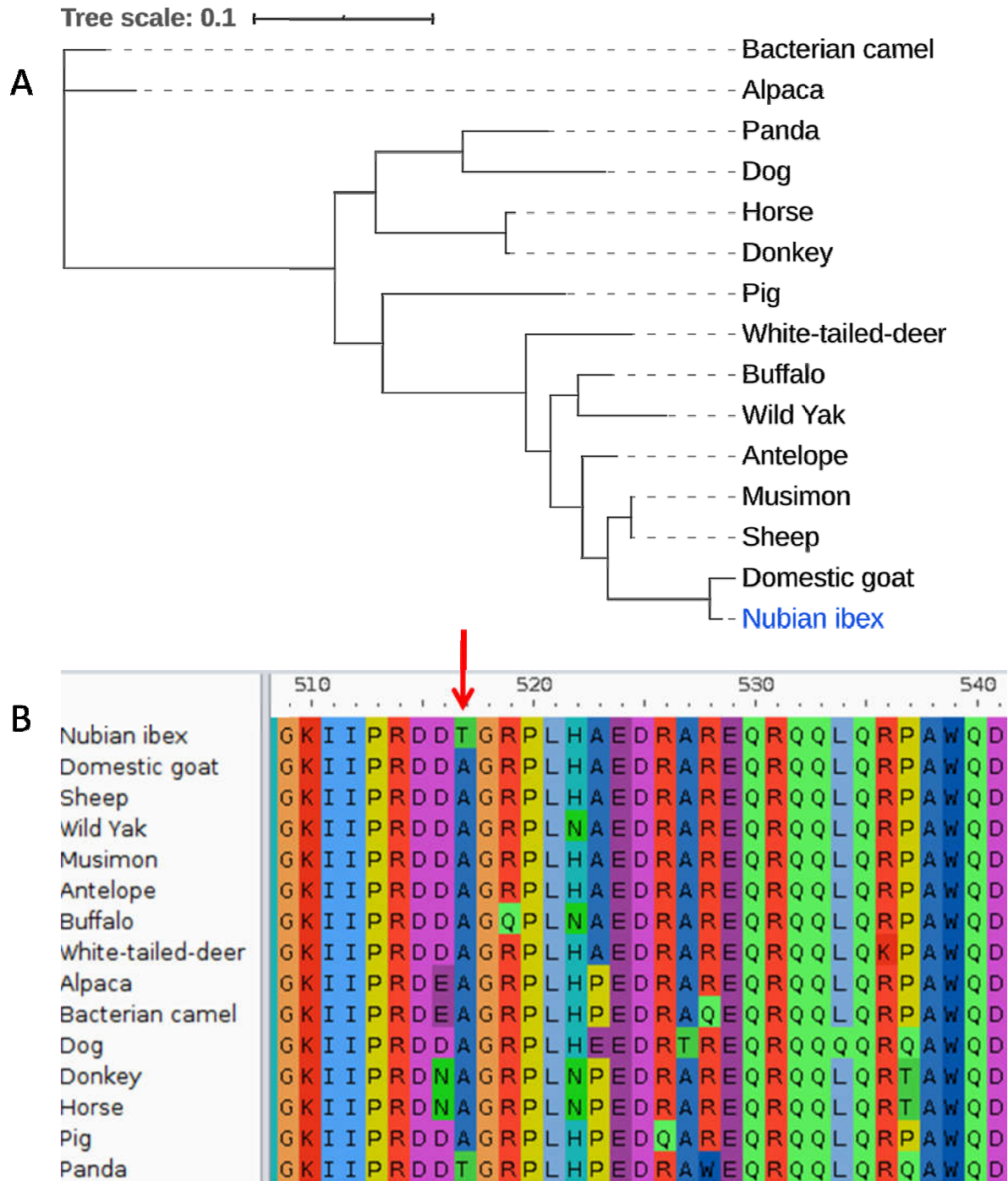


Figure 2. An illustration of the *UVSSA* gene phylogeny tree and alignment data used for dN/dS analysis. **A.** The maximum likelihood phylogenetic tree from *UVSSA* amino acid sequences of 15 species used for dN/dS analysis. **B.** The multiple sequence alignment of the 15 species used of dN/dS analysis showing amino acid site (T517A) under positive selection in *UVSSA* gene.