

Supplementary Material

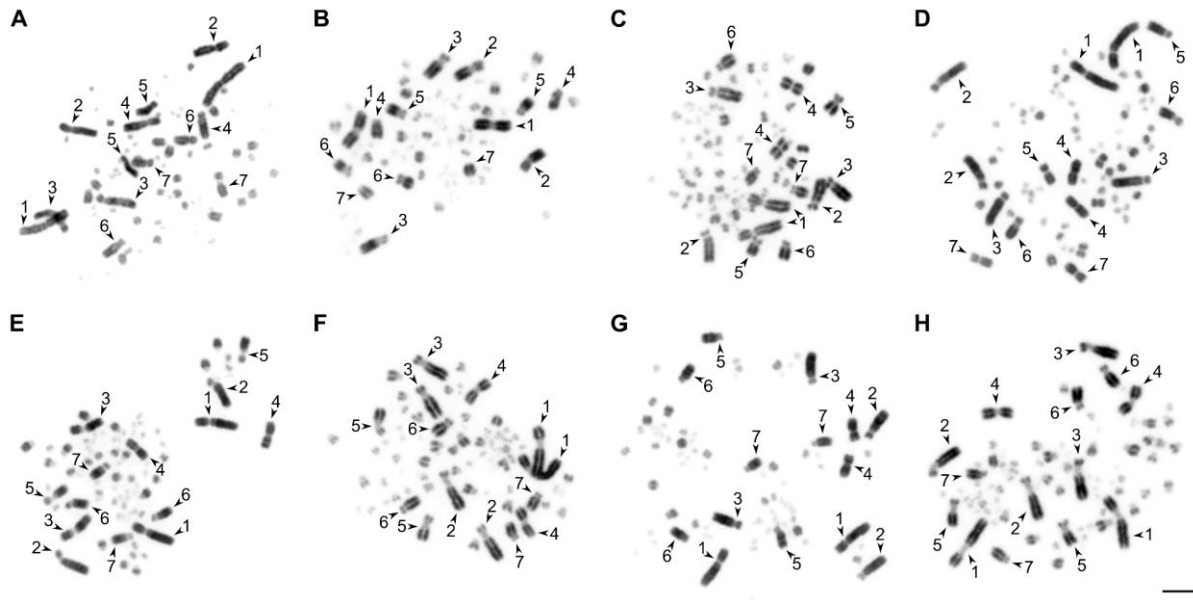


Figure S1. The examples of metaphase chromosome plates prepared from the short term testicular cell cultures of zebra finch (A), Gouldian finch (B), common chaffinch (C), brambling (D), European greenfinch (E), domestic canary (F), European goldfinch (G) and common linnet (H). The arrowheads indicate the seven largest macrochromosomes. Bar – 5 μm .

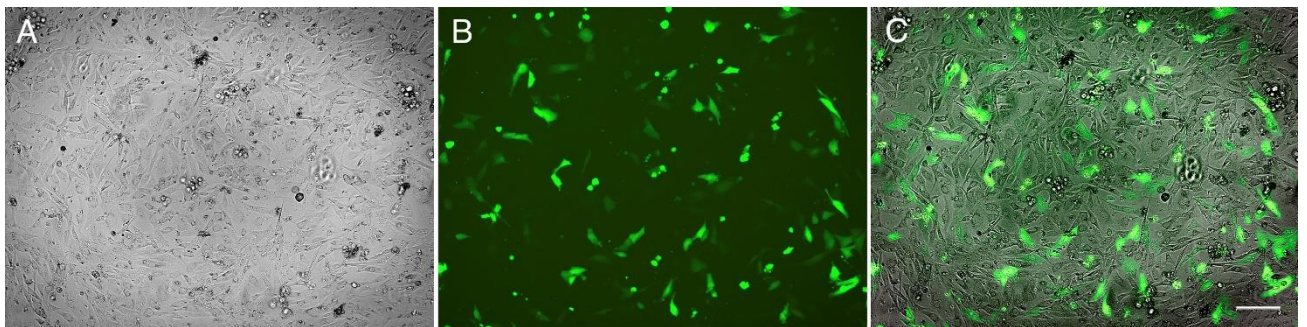


Figure S2. The OFC1A cell culture electroporated by plasmid with GFP. A - phase contrast image, B - GFP, C - merged image. Bar - 100 μm .

Table S1. Sources of the birds examined

Scientific name	Common name	No of specimens	Source
<i>Parus major</i>	Great tit	4 females, 1 male	Trapped in Novosibirsk
<i>Bathilda ruficauda</i>	Starfinch	1 male	Purchased from a commercial breeder
<i>Taeniopygia guttata</i>	Zebra finch	1 male	Purchased from a commercial breeder
<i>Chloebia gouldiae</i>	Gouldian finch	1 male	Purchased from a commercial breeder
<i>Fringilla coelebs</i>	Common chaffinch	1 male	Trapped in Novosibirsk
<i>Fringilla montifringilla</i>	Brambling	1 male	Trapped in Novosibirsk
<i>Chloris chloris</i>	European greenfinch	1 male	Trapped in Novosibirsk
<i>Serinus canaria forma domestica</i>	Domestic canary	1 male	Purchased from a commercial breeder
<i>Carduelis carduelis</i>	European goldfinch	1 male	Trapped in Novosibirsk
<i>Linaria cannabina</i>	Common linnet	1 male	Trapped in Novosibirsk

Table S2. Primer sequences used for RT-PCR Analysis

Gene	Sequence (5'–3')		Product size(bp)
	Sense	Antisense	
VIM	TAGTTGGCGAAGCGGTCATT	GACTCGGTGGACTTCACCTT	107
ALCAM	ACCAGACTACAAAGACAGGTTGA	GACTATCGTCGGCTCTTCGG	136
POSTN	CTCCAGACCCTTTGCCAGTT	CTCCCCTCGGAAGTCTCTCA	918
DCN	AGGTGCCAAAAGACCTTCCC	TGCCAAGTTGGTGAGTCCAG	524
OSR1	GGAGCAGTGGGCTCCAATTT	CCGCTAGTGTTCTGGACTGG	838
FOXL2	TGGGAGCATGACAGCAAACA	TACACTGACACTACACGCGG	234
β -actin	CTCGAAATCCAGGGCGACAT	CTCATGCCATCCTCCGTCTG	158